

TU527

(B) Describe any record evidence, monument evidence, occupational evidence, testimonial evidence or any other material evidence you considered, and whether the monument was found or placed.

- 1836 LYON SET POST CORNER TO SECTIONS 3,4,9,&10. BUR OAK 18 S24W 142 & BUR OAK 5 N61E 33.
- 1865 LOCKE VOL 1 PG 229 FOUND STUMPS OF B.T.S & OLD STAKE. SET BUR OAK STAKE WITH L.S. ON N,S,E,& W. 2658.48 TO N 1/4 COR SEC 10 & 2655.84 TO W 1/4 COR SEC 10.
- 18?? RUGER VOL 2 PG 522 LIMESTONE 22X7X7 SURROUNDED BY 4 L.S. 2653.86 TO E 1/4 COR SEC 4 & 2647.26 TO S 1/4 COR SEC 4.
- 1882 HOLMES VOL 2 PG 356 FOUND STAKE & STONES ALSO THE REMAINS OF THE ROOTS OF S.W. B. TREE 2659.14 VAR 5-56 TO E 1/4 COR SEC 9.
- 1965 BATTERMAN VOL 4 PG 225 . FOUND STONE MONUMENT & REFERENCED SAME. 41.02 TO PIN IN SHOPIERE RD.

FOUND POINTED LIMESTONE 0.7' DEEP. PLACED MAGNET 17" DEEP ON E & W SIDES. LIMESTONE IS 5 1/2" WIDE.

C) Was the corner restored through acceptance of (1) an obliterated evidence location, or, (2) a found perpetuated location?
ACCEPTED FOUND STONE OF RECORD.

D) Describe any material discrepancy between the location of the corner as restored or reestablished and the location of that corner as previously restored or reestablished by distance and direction. Show the discrepancy on the plan view drawing under (a), above. Show the distances between the corner as previously restored or reestablished and (1) the corner as restored or reestablished, and (2) to at least 4 of the witness monuments shown on the drawing in (a), above.

(E) Was the corner reestablished through lost corner proportionate methods? If so, show the method, including the directions and distances to other public land survey corners used as evidence or used for proportioning the corner location.
NO

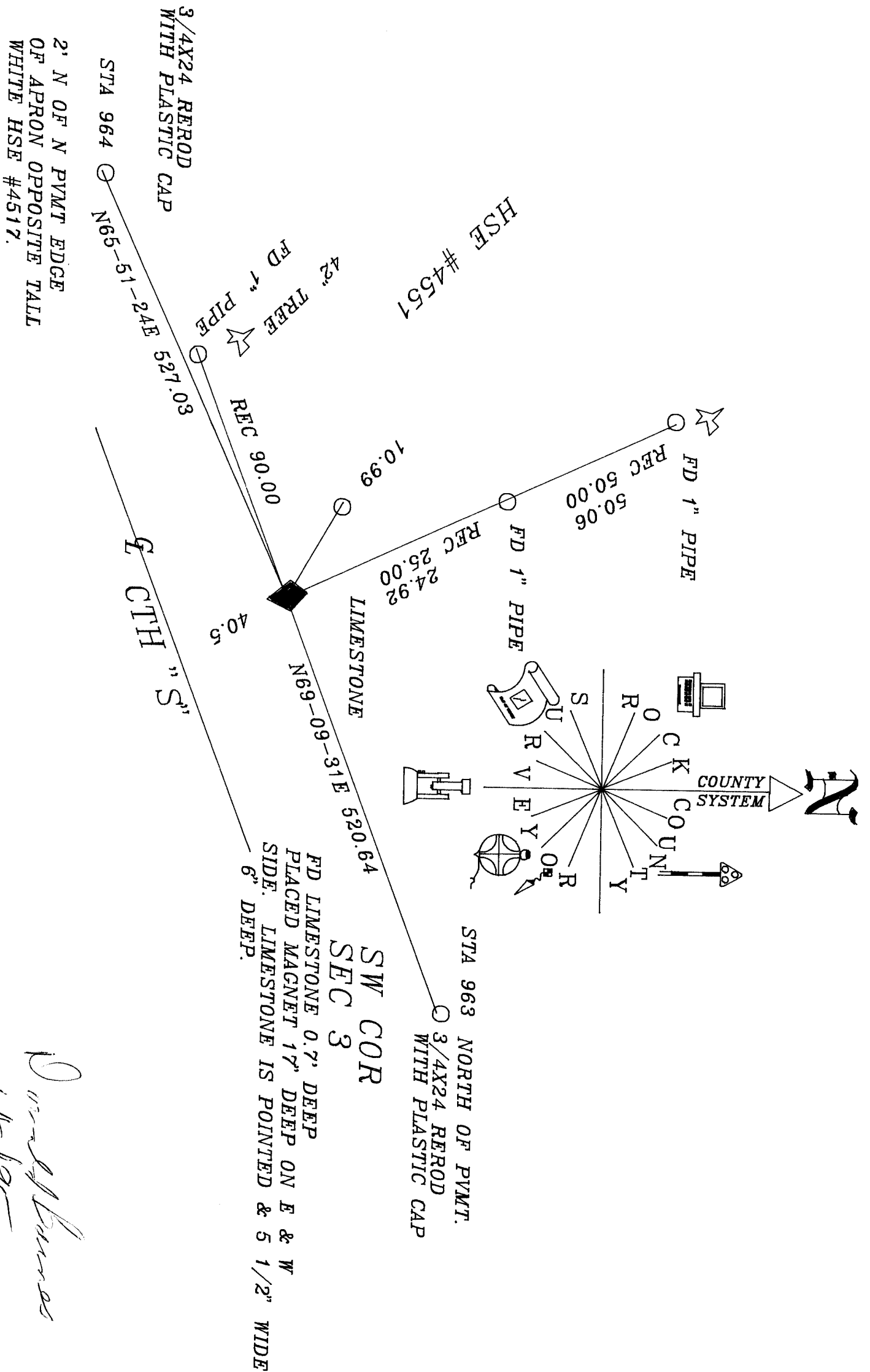
I, Donald Barnes, hereby certify that the corner points as identified by the corner code index were, in a field survey on, _____, 199____, established, re-established, monumented, re-monumented, recovered or restored as expressed below and in conformance with the regulations and rules as required in the current manual of survey instructions of the United States Department of Interior, Bureau of Land Management.

Donald Barnes
seal
6/12/95

COUNTY SURVEYOR FILING DATA
Date of computer entry _____
Date microfilmed _____
Number of included sheets _____
CORNER CODE _____

EMBOSS LAND SURVEYOR SEAL

E13



Donald Barnes
 10/21/95