

(b.) Describe any record evidence, monument evidence, occupational evidence, testimonial evidence or any other material evidence you considered, and whether the monument was found or placed.

- 1) 1865 LOCKE REFERRED TO THE CORNER AS PLACED BY A COL. MILLER
- 2) 1972 SHIMEALL PLACED A PIN AT THE CORNER.

FOUND R/R SPIKE & REPLACED IT WITH A POLY MON. THE MONUMENT IS WITHIN 0.68' OF THE PRORATION OF THE ORIGINAL GOVERNMENT PLAT DISTANCES AND THE MEASURED DISTANCES.

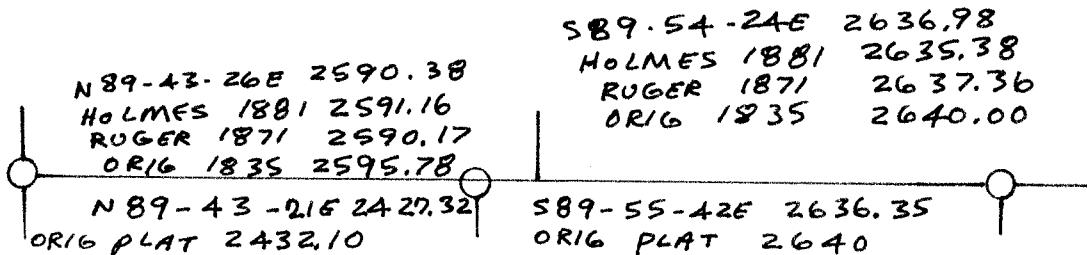
(c.) Was the corner restored through acceptance of (1) an obliterated evidence location, or, (2) a found perpetuated location?

ACCEPTED FOUND R/R

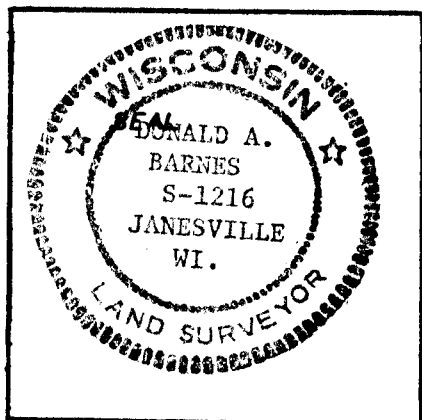
(d.) Describe any material discrepancy between the location of the corner as restored or reestablished and the location of that corner as previously restored or reestablished by distance and direction. Show the discrepancy on the plan view drawing under (a), above. Show the distances between the corner as previously restored or reestablished and (1) the corner as restored or reestablished, and (2) to at least 4 of the witness monuments shown on the drawing in (a), above.

(e.) Was the corner reestablished through lost corner proportionate methods? If so, show the method, including the directions and distances to other public land survey corners used as evidence or used for proportioning in determining the corner location.

NO



I, Donald Barnes, hereby certify that the corner points as identified by the corner code index were, in a field survey on Apr. 28 1986 established, re-established, monumented, re-monumented, recovered or restored as expressed below and in conformance with the regulations and rules as required in the current manual of survey instructions of the United States Department of Interior, Bureau of Land Management.



COUNTY SURVEYOR FILING DATA

Date of Computer Entry _____

Date Received _____

Date Microfilmed _____

Treasurer's Receipt No. _____

Number of Included Sheets _____

AFFIX YOUR LAND SURVEYOR SEAL. CORNER CODE A 3