

PUBLIC LAND SURVEY MONUMENT RECORD

For Public Land Survey Corners in the

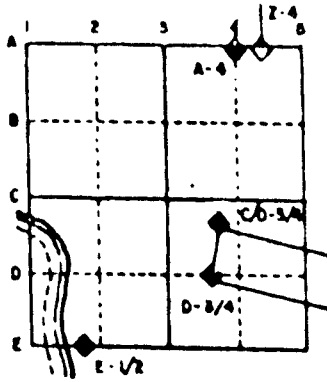
T. 1 N., R. 13 E.

CORNER CODE INDEX

	1	2	3	4	5	6	7	8	9	10	11	12	13	14	15	16	17	18	19	20	21	22	23	24	25
A																									
B																									
C																									
D																									
E																									
F																									
G																									
H																									
I																									
J																									
K																									
L																									
M																									
N																									
O																									
P																									
Q																									
R																									
S																									
T																									
U																									
V																									
W																									
X																									
Y																									

PLACE MONUMENT SYMBOL (●) AT PROPER LOCATION ON ABOVE INDEX

EXAMPLE



TURTLE TWP
ROCK COUNTY WI

IF AVAILABLE
STATE PLANE COORDINATES

North (Y) 209,103.77 Elev. (Z) _____

East (X) 504,780.28 Zone _____

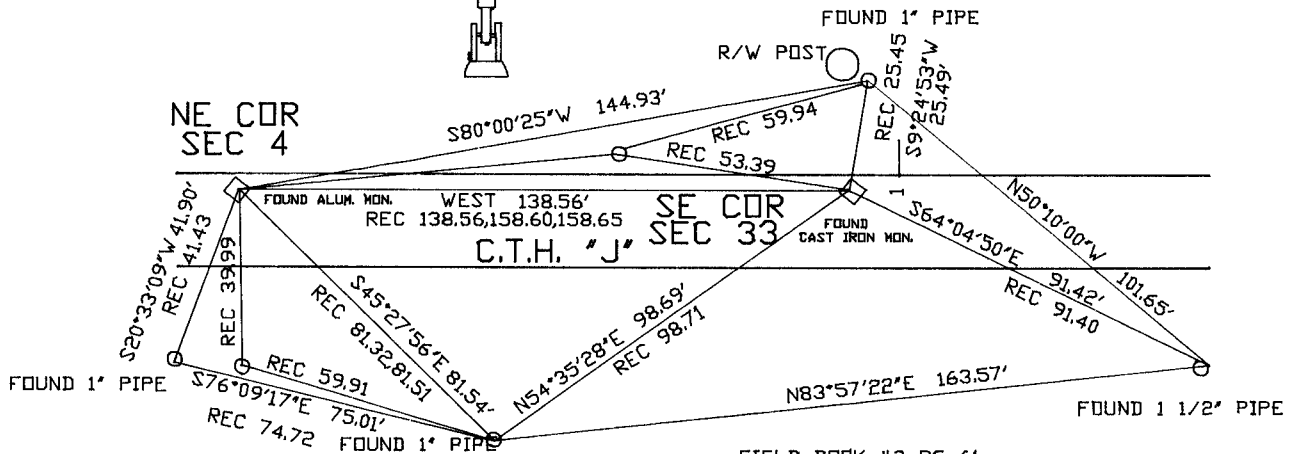
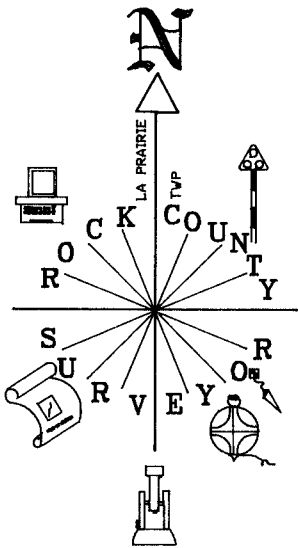
Hor. Datum COUNTY Vert. Datum _____

232,942.39
512,068.43

◆ CORNER MONUMENT

○ WITNESS MONUMENT

BEARINGS ARE BASED ON:



FIELD BOOK #3 PG 61
LA PRAIRIE TWP

SHEET ___ OF ___

CORNER CODE: A13

(B) Describe any record evidence, monument evidence, occupational evidence, testimonial evidence or any other material evidence you considered, and whether the monument was found or placed.

1836 LYON INTERSECTED NORTH BOUNDARY 138.6' WEST OF POST & SET POST & MADE MOUND OF EARTH & SOD.
1861 RUGER VOL 1 PG 152 SET LIMESTONE 24X15X4 138.6 WEST OF SE COR SEC 33. 2667.06 TO N 1/4 COR SEC 3.
1939 SUNNY VOL 3 PG 451 FOUND 5X16X17 LIMESTONE SET 1 1/2X11 CAPPED PIPE ON TOP & REFERENCED SAME. CALLS FOR 138.6 TO SE COR SEC 33.
1964 BATTERMAN VOL 4 PG 203 SET C.I. & REFERENCED SAME. 138.65 WEST OF SE COR SEC 33.
1985 BARNES Z15 FOUND ALUM MON 138.56 WEST OF SE COR SEC 33 & REFERENCED SAME.

FOUND ALUM. MON. S88-3026E 2672.76 TO N 1/4 COR SEC 3.

(C) Was the corner restored through acceptance of (1) an obliterated evidence location, or, (2) a found perpetuated location?
ACCEPTED FOUND PERPETUATED LOCATION.

D) Describe any material discrepancy between the location of the corner as restored or reestablished and the location of that corner as previously restored or reestablished by distance and direction. Show the discrepancy on the plan view drawing under (a), above. Show the distances between the corner as previously restored or reestablished and (1) the corner as restored or reestablished, and (2) to at least 4 of the witness monuments shown on the drawing in (a), above.

(E) Was the corner reestablished through lost corner proportionate methods? If so, show the method, including the directions and distances to other public land survey corners used as evidence or used for proportioning the corner location.
NO

I, Donald Barnes, hereby certify that the corner points as identified by the corner code index were, in a field survey on, 1994, established, re-established, monumented, re-monumented, recovered or restored as expressed below and in conformance with the regulations and rules as required in the current manual of survey instructions of the United States Department of Interior, Bureau of Land Management.

seal

Donald Barnes
5/12/95

EMBOSS LAND SURVEYOR SEAL

COUNTY SURVEYOR FILING DATA

Date of computer entry _____

Date microfilmed _____

Number of included sheets _____
CORNER CODE

A-E 7.08 REQUIREMENT