

# U.S. PUBLIC LAND SURVEY MONUMENT RECORD

For Public Land Survey Corners in:

WI ADMINISTRATIVE CODE A-E 7.08 REQUIREMENT

T. 1 N., R. 12 E 4th P.M.

CORNER CODE INDEX

A	1	2	3	4	5	6	7	8	9	10	11	12	13	14	15	16	17	18	19	20	21	22	23	24	25
B	6																								
C																									
D																									
E																									
F																									
G	7	8	9	10	11	12	13	14	15	16	17	18	19	20	21	22	23	24	25	26	27	28	29	30	
H																									
J																									
K	18	17	16	15	14	13	12	11	10	9	8	7	6	5	4	3	2	1							
L																									
M																									
N																									
O	19	20	21	22	23	24	25	26	27	28	29	30	31	32	33	34	35	36							
P																									
Q																									
R																									
S																									
T	30	29	28	27	26	25	24	23	22	21	20	19	18	17	16	15	14	13	12	11	10	9	8	7	
U																									
V																									
W																									
X																									
Y																									
Z																									

TWP

ROCK COUNTY, WI

IF AVAILABLE  
ROCK COUNTY COORDINATES PREFERRED

North 233,248.61 Elev. \_\_\_\_\_

East 480,506.06

Hor. Datum County Vert. Datum \_\_\_\_\_

LATITUDE \_\_\_\_\_ ELLIPS. HT. \_\_\_\_\_

LONGITUDE \_\_\_\_\_

ELLIPS. DATUM  
NAD83(91) \_\_\_\_\_ COUNTY \_\_\_\_\_ LIST \_\_\_\_\_

GPS (X) \_\_\_\_\_ TRAVERSE (X) \_\_\_\_\_

BASED ON THE FOLLOWING CONTROL:

PLACE MONUMENT SYMBOL  AT PROPER LOCATION ON ABOVE INDEX

 CORNER MONUMENT

WITNESS MONUMENT

(a)

BEARINGS ARE BASED ON:

FIELD BOOK \_\_\_\_\_ PAGE # \_\_\_\_\_

SHEET 1 OF 2

SHOW A PLAN VIEW DRAWING DEPICTING THE CORNER MONUMENT AND SURROUNDING PHYSICAL FEATURES, INCLUDING THE EXCAVATION AREA AND DEPTH.

PLANNING & ZONING COMMITTEE ADOPTED THE ABOVE FORM ON 12/2/1982

CORNER CODE A-13

BE507

(B) Describe any record evidence, monument evidence, occupational evidence, testimonial evidence or any other material evidence you considered, and whether the monument was found or placed.

1833 MULLETTE EAST SIDE SECTION 33  
2640 SET QUARTER SECTION POST AND RAISED A MOUND  
5082 LEAVE MARSH AND ENTER PRAIRE.  
5280 SET POST IN PRAIRIE CORNERS SECTIONS 33 & 34 AND RAISED  
A MOUND LAND SAME AS LAST MILE.

1834 HARRISON ORIGINAL NORTH BETWEEN SECS 3 & 4  
1980 LEAVE PRAIRIE AND ENTER A SMALL GROVE OF BURR OAK  
TIMBER CRS N.W.  
2640 QUARTER SEC CORNER. MARKED {BURR OAK 12 N21W  
22.44'; BURR OAK 14 S32W 42.24'  
2715.9 BURR OAK 8 IN DIAM  
3102 BROOK 5.28' CRS S.E.  
3300 LEAVE TIMBER & ENTER PRAIRIE  
3630 ALONG EAST EDGE OF MARSH EXT. WEST.  
5527.5 INTERSECTED NORTH BOUNDARY 82.5' WEST OF POST NEAR  
EAST EDGE OF MARSH. SET A POST & RAISED MOUND.  
MARCH 19TH

1858 CHURCH VOL 1 PG 80 SHOWS 82.5 WEST OF SW CORNER OF SEC 34.  
1858 CHURCH VOL 1 PG 81 SHOWS 2688.18 TO N 1/4 CORNER OF SECTION  
3.

1874 RUGER VOL 2 PG 143. FOUND OLD STAKE DROVE NEW STAKE IN  
PLACE OF OLD NONE & PUT ON IT LIMESTONE 10X6X4. THE CORNER  
IS 6.76 SOUTH OF E/W FENCE & 2.97 SOUTH OF CORNER AT SW  
CORNER OF SECTION 34. SHOWS IT AS 81.84 WEST OF THE SW  
CORNER OF SECTION 34 & 2702.29 TO N 1/4 CORNER OF SECTION 3.

1958 BATTERMAN JR. VOL 3 PG 552. 2" PIPE 81.77 WEST OF SW CORNER  
OF SECTION 34.

1969 BATTERMAN VOL 4 PG 390 SHOWS A 2" PIPE 81.80 WEST OF THE SW  
CORNER OF SECTION 34 AND REFERENCE TIES. SHOWS 89.3 WEST OF  
CENTER OF PAVEMENT.

1981 BARNES VOL 6 PG 143 SHOWS THE CORNER AS WEST OF THE SE  
CORNER OF SECTION 33. WITH THE FOLLOWING DISTANCES:  
ORIGINAL 82.15  
BATTERMAN 1969 81.80  
RUGER 1874 81.84  
CHURCH 1858 82.5  
ALSO SHOWS LEE 1971 2690.59 TO N 1/4 CORNER OF SECTION 4.

DID NOT PLACE MONUMENT. CORNER IS UNDER LARGE FILE OF TREES.

C) Was the corner restored through acceptance of (1) an obliterated evidence location, or, (2) a found perpetuated location?

NO

(E) Was the corner reestablished through lost corner proportionate methods? If so, show the method, including the directions and distances to other public land survey corners used as evidence or used for proportioning the corner location.

PLACED CORNER ON LINE BETWEEN THE SE COR SEC 33 AND THE SW CORNER SEC 33 AT RECORD DISTANCE OF 81.80'.

I, Donald Barnes, hereby certify that the corner points as identified by the corner code index were, in a field survey, established, re-established, monumented, re-monumented, recovered or restored as expressed below and in conformance with the regulations and rules as required in the current manual of survey instructions of the United States Department of Interior, Bureau of Land Management.

COUNTY SURVEYOR FILING DATA

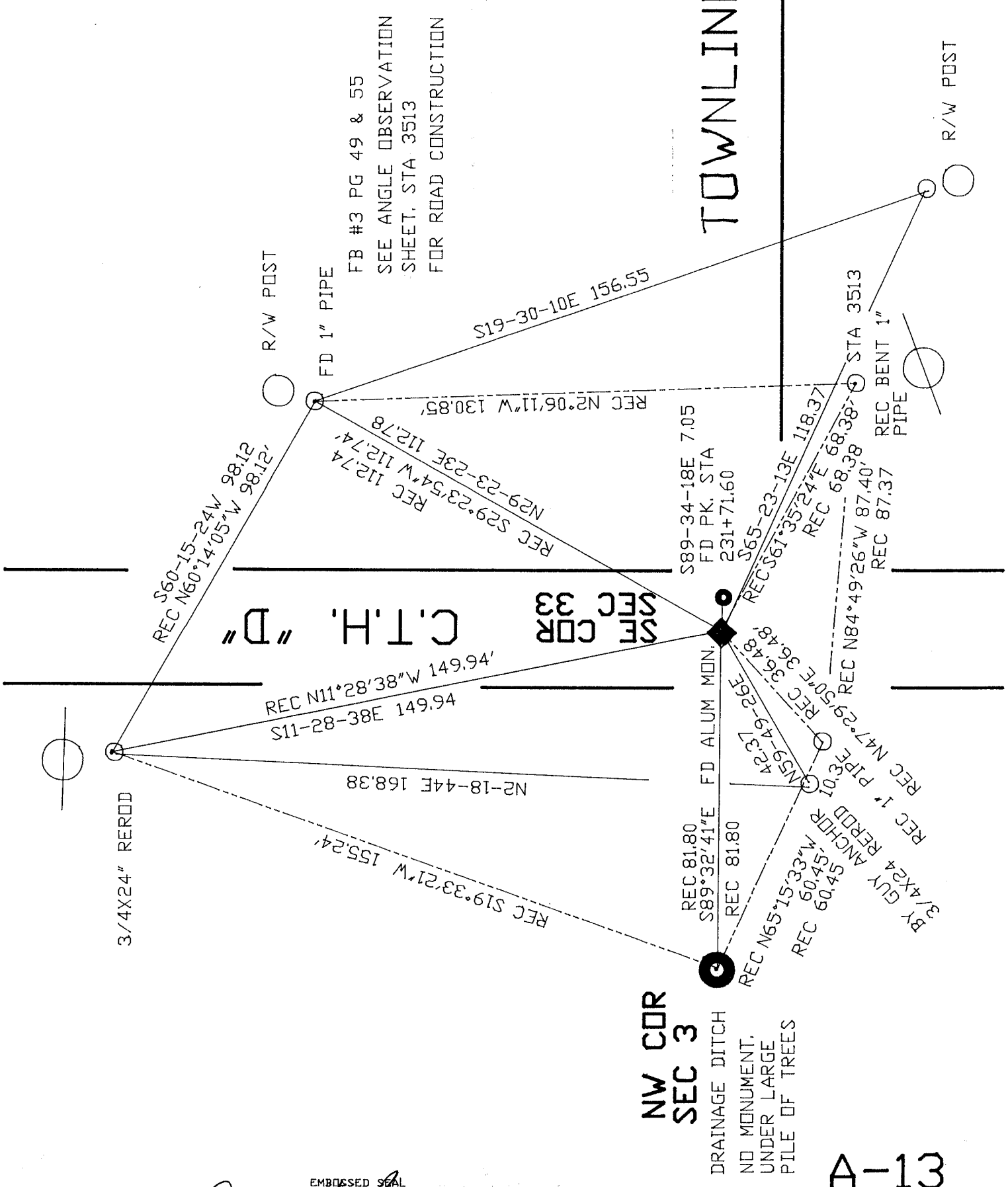
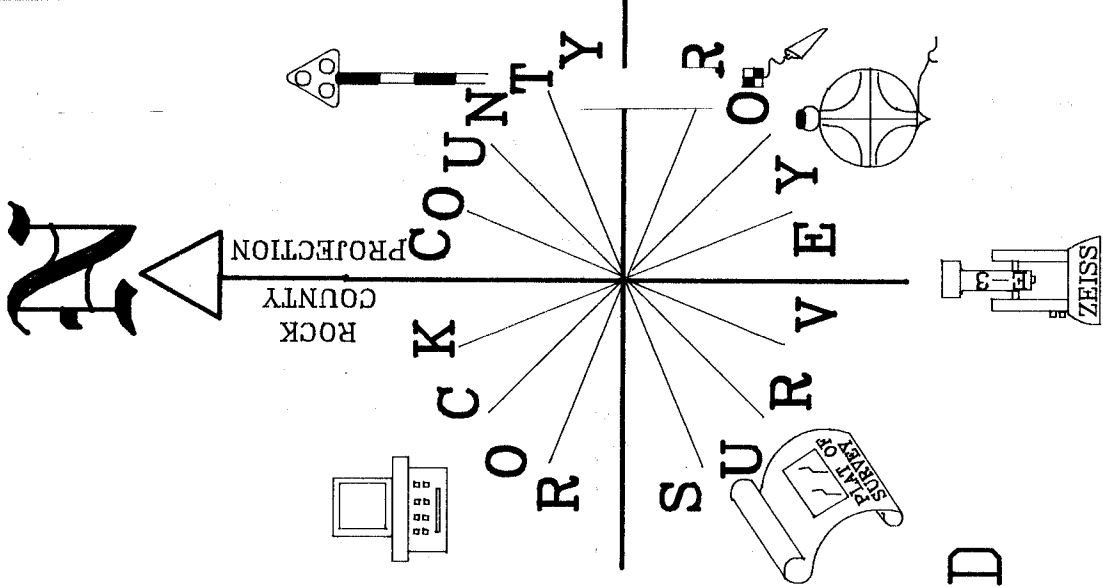
seal  
*Donald Barnes*  
*OCT 9, 1998*

Date of computer entry\_\_\_\_\_

Number of included sheets \_\_\_\_\_  
CORNER CODE

AFFIX YOUR LAND SURVEYOR SEAL

A-13



EMBOSSED SEAL  
*Donald Barnes*  
 OCT 9, 1998

A-13