

# U.S. PUBLIC LAND SURVEY MONUMENT RECORD

For Public Land Survey Corners in:

WI ADMINISTRATIVE CODE A-E 7.08 REQUIREMENT

T. 1 N., R. 12 E 4th P.M.

CORNER CODE INDEX

A	1	2	3	4	5	6	7	8	9	10	11	12	13	14	15	16	17	18	19	20	21	22	23	24	25
B	6																								
C																									
D																									
E																									
F																									
G	7	8	9	10	11	12	13	14	15	16	17	18	19	20	21	22	23	24	25	26	27	28	29	30	
H																									
I																									
J																									
K	18	17	16	15	14	13	12	11	10	9	8	7	6	5	4	3	2	1							
L																									
M																									
N																									
O	19	20	21	22	23	24	25	26	27	28	29	30	31	32	33	34	35	36							
P																									
Q																									
R																									
S	30	29	28	27	26	25	24	23	22	21	20	19	18	17	16	15	14	13	12	11	10	9	8	7	
T																									
U																									
V																									
W																									
X																									
Y																									
Z																									

BELOIT TWP  
ROCK COUNTY, WI

IF AVAILABLE  
ROCK COUNTY COORDINATES PREFERRED

North 233,304.13 Elev. \_\_\_\_\_

East 467,099.12

Hor. Datum COUNTY Vert. Datum \_\_\_\_\_

LATITUDE \_\_\_\_\_ ELLIPS. HT. \_\_\_\_\_

LONGITUDE \_\_\_\_\_

ELLIPS. DATUM  
NAD83(91) \_\_\_\_\_ COUNTY \_\_\_\_\_ LIST \_\_\_\_\_

GPS (X) \_\_\_\_\_ TRAVERSE (X) \_\_\_\_\_

BASED ON THE FOLLOWING CONTROL:

PLACE MONUMENT SYMBOL  AT PROPER LOCATION ON ABOVE INDEX

 CORNER MONUMENT

WITNESS MONUMENT

(a)

BEARINGS ARE BASED ON:

FIELD BOOK \_\_\_\_\_ PAGE # \_\_\_\_\_

SHEET 1 OF 2

SHOW A PLAN VIEW DRAWING DEPICTING THE CORNER MONUMENT AND SURROUNDING PHYSICAL FEATURES, INCLUDING THE EXCAVATION AREA AND DEPTH.

PLANNING & ZONING COMMITTEE ADOPTED THE ABOVE FORM ON 12/2/1982

CORNER CODE A-3

BE502

(B) Describe any record evidence, monument evidence, occupational evidence, testimonial evidence or any other material evidence you considered, and whether the monument was found or placed.

- 1870 RUGER VOL 2 PG 45 SET L.S. 19X6X3 SURROUNDED WITH 4 H.H. 204.38 WEST OF S 1/4 COR SEC 31. 2446.84 VAR 5-55 TO NW COR SEC 6, 2652.10 VAR 6-31 TO NE COR SEC 6, & VAR 6-25 TO S 1/4 COR SEC 6.
- 1870 RUGER VOL 2 PG 46 204.38' WEST OF S 1/4 COR SEC 31. REFERS TO VOL 2 PG 45. 406.12 VAR 5-55 (WEST OF N 1/4 COR SEC 6) TO LIMESTONE 13X6X2 WITH LIMESTONE ON NORTH & SOUTH SIDES. 2645.28 FROM S 1/4 COR SEC 31 TO CENTER OF SEC 31.
- 1881 LEE VOL 2 PG 328 FOUND CORNER SET BY RUGER 2448.6 TO NW COR SEC 6, 2724.81 VAR 5-30 TO CENTER OF SEC 6.
- 1976 WPL VOL 4 PG 286 SET ALUM. IN PLACE OF STONE. N/S 214,316.03; E/W 2,237,005.11
- 1976 WPL VOL 6 PG 144 N89-38-22E 2452.66 TO NW COR.
- 1976 WPL VOL 6 PG 143 S0-25-42E 5382.40 TO S 1/4 COR SEC 6.
- 1981 BARNES VOL 6 PG 143 N88-41-16E 204.38 TO S 1/4 COR SEC 31, 2660.77 TO MONUMENT BOX AT NE COR SEC 6.
- 1981 BARNES VOL 6 PG 144 S1/4 COR SEC 31 ROCK TWP. LAND OWNER STATED SHIMEAL DUG & FD STONE OF RECORD. SHIMEALL SHOWED HIM THE STONE. THIS LOCATION WAS DISTURBED BUT AGREED WITH RECORD DISTANCES. PLACED C.I. MONUMENT.

FOUND C.I. MONUMENT.

C) Was the corner restored through acceptance of (1) an obliterated evidence location, or, (2) a found perpetuated location?  
ACCEPTED FOUND PERPETUATED LOCATION.

D) Describe any material discrepancy between the location of the corner as restored or reestablished and the location of that corner as previously restored or reestablished by distance and direction. Show the discrepancy on the plan view drawing under (a), above. Show the distances between the corner as previously restored or reestablished and (1) the corner as restored or reestablished, and (2) to at least 4 of the witness monuments shown on the drawing in (a), above.  
NONE

(E) Was the corner reestablished through lost corner proportionate methods? If so, show the method, including the directions and distances to other public land survey corners used as evidence or used for proportioning the corner location.  
NO

I, Donald Barnes, hereby certify that the corner points as identified by the corner code index were, in a field survey, established, re-established, monumented, re-monumented, recovered or restored as expressed below and in conformance with the regulations and rules as required in the current manual of survey instructions of the United States Department of Interior, Bureau of Land Management.

COUNTY SURVEYOR FILING DATA

Date of computer entry \_\_\_\_\_

Date microfilmed \_\_\_\_\_

Number of included sheets \_\_\_\_\_

CORNER CODE

A-3

seal  
*Donald Barnes*  
*Oct 9, 1998*

EMBOSS LAND SURVEYOR SEAL

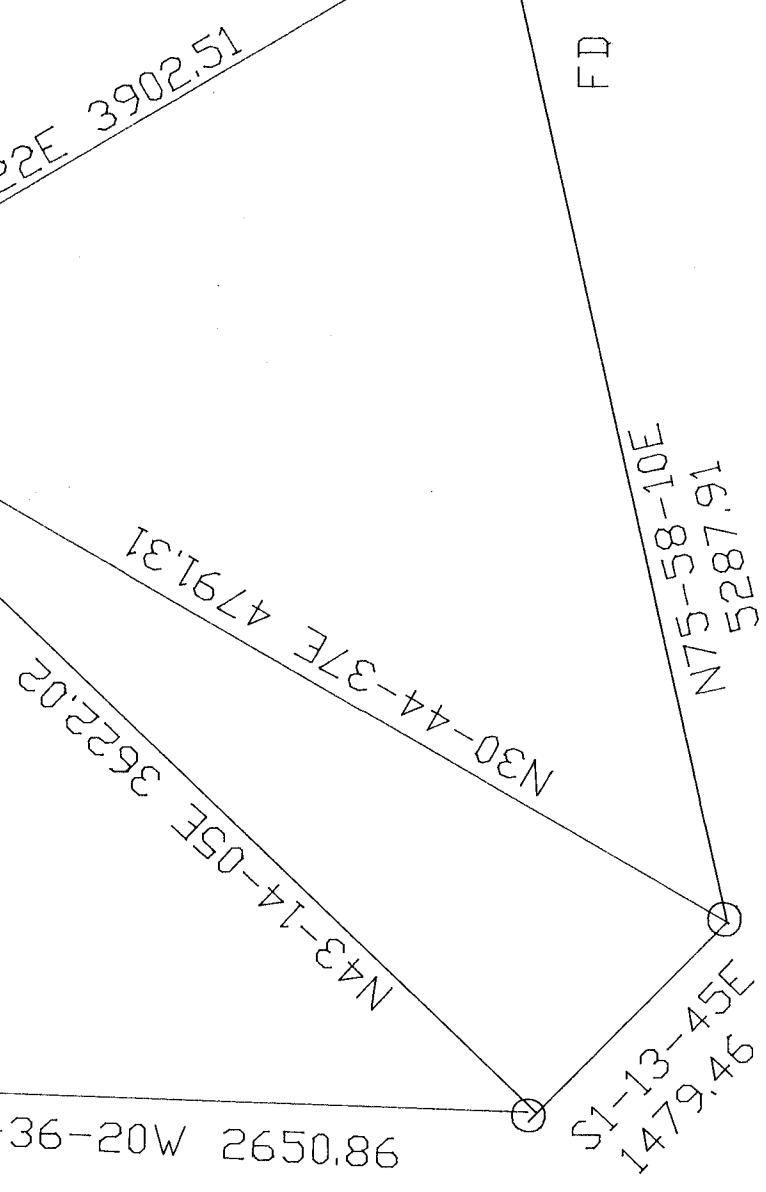
A-E 7.08 REQUIREMENT

NW COR  
 SEC 6  
 FD 3/4 PIPE  
 2' EAST OF CENTER  
 OF PAVEMENT  
 S89-43-21E 2453.06  
 N 1/4 COR  
 MON. SEC 6  
 FD ALUM. MON.  
 N89-19-23E  
 204.38  
 S 1/4 COR  
 SEC 31  
 FD C.I.

JOHNSON RD  
 S0-36-20W 2650.86

NO E/W FENCES  
 FD 1" PIPE  
 E 1/4 COR  
 SEC 1

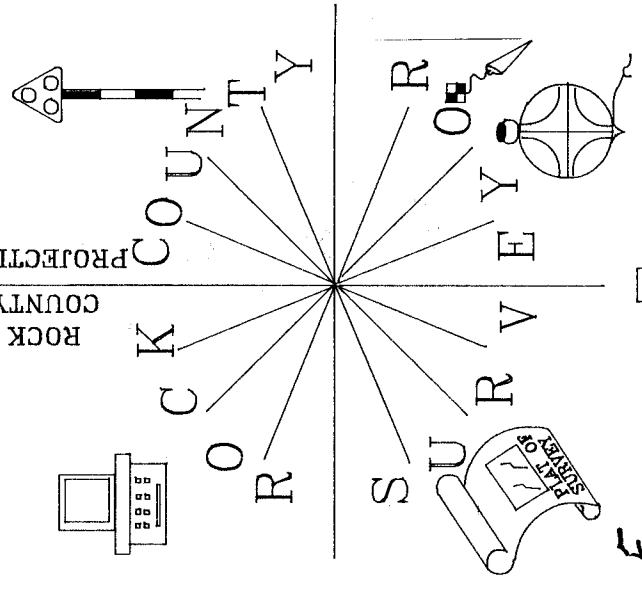
E 1/4 COR  
 SEC 6  
 FD ALUM MON.



*Paul Barnes*  
 Oct 9, 1998

A-3

STA 492(GPS)  
 3/4X24 REROD  
 ON NARROW N/S RIDGE  
 EAST SIDE PVMT



ROCK COUNTY  
 PROJECTION  
 ROCK COUNTY  
 SURVEY  
 ROCK COUNTY