

# U.S. PUBLIC LAND AND SURVEY MONUMENT RECORD

For Public Land Survey Corners in the  
T. 4 N., R. 13 E

TURTLE TWP  
ROCK COUNTY WI

CORNER CODE INDEX

A	1	2	3	4	5	6	7	8	9	10	11	12	13	14	15	16	17	18	19	20	21	22	23	24	25
B						6																			
C							5																		
D								4																	
E									3																
F										2															
G											1														
H																									
J																									
K																									
L																									
M																									
N																									
O																									
P																									
Q																									
R																									
S																									
T																									
U																									
V																									
W																									
X																									
Y																									
Z																									

IF AVAILABLE  
ROCK COUNTY COORDINATES REFERRED


North 200,798.69 Elev. \_\_\_\_\_


East 512,066.61

Hor. Datum COUNTY Vert. Datum \_\_\_\_\_

GPS (x) \_\_\_\_\_ TRAVERSE (x) X

BASED ON THE FOLLOWING CONTROL:

PLACE MONUMENT SYMBOL  AT PROPER LOCATION ON ABOVE INDEX

 CORNER MONUMENT

 WITNESS MONUMENT

(a)

BEARINGS ARE BASED ON:

FIELD BOOK \_\_\_\_\_ PAGE # \_\_\_\_\_

SHOW A PLAN VIEW DRAWING DEPICTING THE CORNER MONUMENT AND SURROUNDING PHYSICAL FEATURES, INCLUDING THE EXCAVATION AREA AND DEPTH. THE CORNER MONUMENT SHALL HAVE THE FOLLOWING CHARACTERISTICS: 1) HAVE A LEAST TWO PREDETERMINED BREAK-OFF POINTS. 2) IF BROKEN LEAVE A PERMANENTLY MAGNETIZED REMNANT AT THE ORIGINAL POINT. 3) MUST BE EXTENDABLE. 4) THE CAP IS INSCRIBED "ROCK COUNTY SURVEY MONUMENT - PENALTY FOR DISTURBING MARKER". 5) OR AN EXISTING CUT LIMESTONE. AN IRON PIPE 1 1/2" DIA. (MINIMUM) MAY BE USED IN AREAS WHERE GROUND WATER IS WITHIN ONE FOOT OF THE SURFACE. IF THE CORNER IS OCCUPIED BY AN IMPROVEMENT (MANHOLE/BURIED CABLE, ETC) AN DURABLE, DISTINCT MONUMENT MAY BE USED. CORNERS SHALL BE REFERENCED WITH AT LEAST 4 DURABLE WITNESS MONUMENTS. WITNESS MONUMENTS SHALL BE MADE OF CONCRETE, NATURAL STONE, IRON OR OTHER EQUALLY DURABLE MATERIAL EXCEPT WOOD. DESCRIBE THE CORNER AND THE WITNESS MONUMENTS.

PLANNING & ZONING COMMITTEE ADOPTED THE ABOVE FORM ON 12/2/1982  
WI ADMINISTRATIVE CODE A-E 7.08 REQUIREMENT

SHEET 1 OF 2

CORNER CODE

7 13

(B) Describe any record evidence, monument evidence, occupational evidence, testimonial evidence or any other material evidence you considered, and whether the monument was found or placed.

1833 LYONS SET A POST ON A BUR OAK RIDGE FOR CORNER TO SECTIONS 33 & 34. BUR OAK 19 N37E 169 & BUR OAK 16 N25W 201.

1838 SPALDING FIELD NOTES PG 394 & 395 ILL TWP SURVEY. INTERSECTED BASE LINE OF NW TERRITORY & NORTH BOUNDARY OF ILL 1828.20' WEST OF THE CORNER TO SEC 33 & 34 T1N R13E OF THE 4TH PM. AT SAID INTERSECTION SET A POST & STONE 16" LONG, 10" WIDE, 4" THICK FOR CORNER TO SEC 1 & 2 T46N R2E.

1978 BARNES VOL 5 PG 456 2642.90 TO S 1/4 COR SEC 34, 1814.94 TO N 1/4 COR SEC 1, & 1788.06 TO NE COR SEC 1.

1979 BARNES VOL 5 PG 539 & VOL 6 PG 413 PLACED ALUM. MON. 2642.9 TO S 1/4 COR SEC 34, 1788.06 TO NE COR SEC 1, 2657.06 TO W 1/4 COR SEC 34, & AN ANGLE OF 88-41-34 FROM NW COR SEC 1 TO E 1/4 COR SEC 33.

FOUND ALUM. MON. 1814.97 (REC 1828.20) EAST OF THE NW COR SEC 1.

C) Was the corner restored through acceptance of (1) an obliterated evidence location, or, (2) a found perpetuated location?

ACCEPTED FOUND PERPETUATED LOCATION.

D) Describe any material discrepancy between the location of the corner as restored or reestablished and the location of that corner as previously restored or reestablished by distance and direction. Show the discrepancy on the plan view drawing under (a), above. Show the distances between the corner as previously restored or reestablished and (1) the corner as restored or reestablished, and (2) to at least 4 of the witness monuments shown on the drawing in (a), above.

(E) Was the corner reestablished through lost corner proportionate methods? If so, show the method, including the directions and distances to other public land survey corners used as evidence or used for proportioning the corner location.

NO

I, Donald Barnes, hereby certify that the corner points as identified by the corner code index were, in a field survey on, 1994, established, re-established, monumented, re-monumented, recovered or restored as expressed below and in conformance with the regulations and rules as required in the current manual of survey instructions of the United States Department of Interior, Bureau of Land Management.

seal 7/12/95

*Donald Barnes*

COUNTY SURVEYOR FILING DATA

Date of computer entry \_\_\_\_\_

Date microfilmed \_\_\_\_\_

Number of included sheets \_\_\_\_\_

CORNER CODE

EMBOSS LAND SURVEYOR SEAL

A-E 7.08 REQUIREMENT

213

U.S. PUBLIC LAND SURVEY MONUMENT RECORD

For Public Land Survey Corners in the

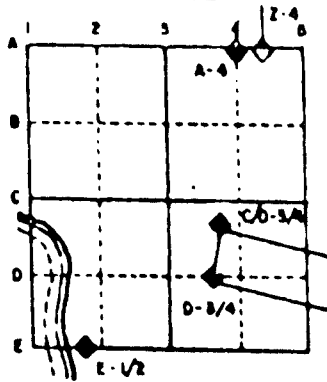
T. 1N., R. 13E

CORNER CODE INDEX

	1	2	3	4	5	6	7	8	9	10	11	12	13	14	15	16	17	18	19	20	21	22	23	24	25
A																									
U																									
L																									
D																									
E																									
F																									
G																									
H																									
J																									
K																									
L																									
M																									
N																									
O																									
P																									
Q																									
R																									
S																									
T																									
U																									
V																									
W																									
X																									
Y																									
Z																									

PLACE MONUMENT SYMBOL (◊) AT PROPER LOCATION ON ABOVE INDEX

EXAMPLE



TURTLE TWP  
ROCK COUNTY WI

IF AVAILABLE  
STATE PLANE COORDINATES

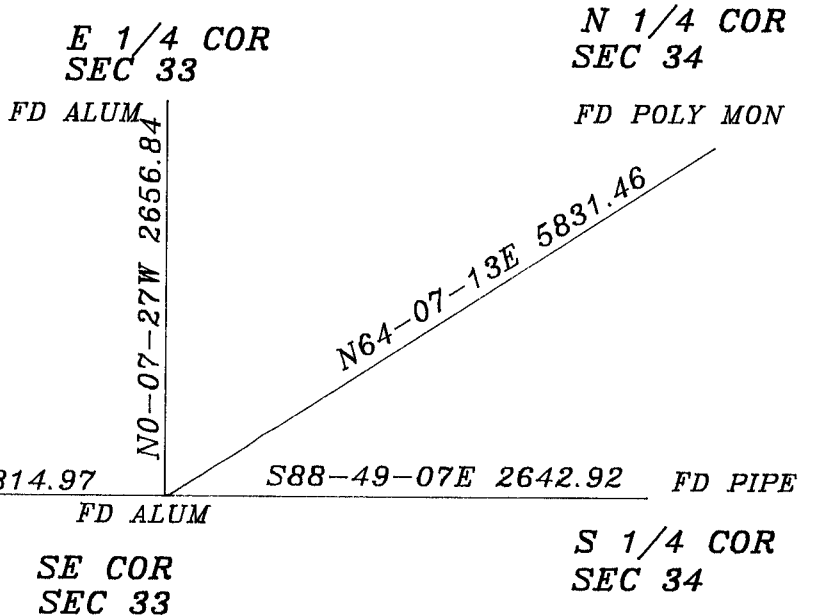
North (Y) \_\_\_\_\_ Eleve. (Z) \_\_\_\_\_  
East (X) \_\_\_\_\_ Zone \_\_\_\_\_  
Hor. Datum \_\_\_\_\_ Vert. Datum \_\_\_\_\_

◊ CORNER MONUMENT

○ WITNESS MONUMENT

*Fd ALUM*

BEARINGS ARE BASED ON: COUNTY SYSTEM



S 1/4 COR  
SEC 33

N88-49-04W 1814.97  
FD BRASS PLUG  
IN CONCRETE MON.

SE COR  
SEC 33

N 1/4 COR  
SEC 34

FD POLY MON

S 1/4 COR  
SEC 34

*Donald Barnes*

*7/12/95*

SHEET 2 OF 2  
*213*

CORNER CODE: