

U.S. PUBLIC LAND SURVEY MONUMENT RECORD

For Public Land Survey Corners in:

WI ADMINISTRATIVE CODE A-E 7.08 REQUIREMENT

T. 1N., R. 12E

CORNER CODE INDEX

A	1	2	3	4	5	6	7	8	9	10	11	12	13	14	15	16	17	18	19	20	21	22	23	24	25
B	6																								
C		5																							
D			4																						
E				3																					
F					2																				
G	1																								
H		8																							
I			9																						
J				10																					
K					11																				
L	18					16																			
M		17					15																		
N			14					14																	
O				13																					
P	19				20																				
Q		20				21																			
R			20				22																		
S				20				23																	
T					20				24																
U	30					29																			
V		29					28																		
W			29					27																	
X				29					26																
Y					29					25															
Z						29					24														
							28					23													
								27					22												
									26					21											
										25					20										
											24					19									
												23					18								
													22					17							
														21					16						
															20					15					
																19					14				
																	18					13			
																		17					12		
																			16					11	
																				15					10
																					14				9
																						13			8
																							12		7
																								11	6
																									5
																									4
																									3
																									2
																									1

BELOIT TWP
ROCK COUNTY WI

IF AVAILABLE
ROCK COUNTY COORDINATES PREFERRED

North 201,344.25 Elev. _____

East 467,082.18

Hor. Datum COUNTY Vert. Datum _____

LATITUDE _____ ELLIPS. HT. _____

LONGITUDE _____

GPS (X) _____ TRAVERSE (X) _____

BASED ON THE FOLLOWING CONTROL:

PLACE MONUMENT SYMBOL AT PROPER LOCATION ON ABOVE INDEX

CORNER MONUMENT

WITNESS MONUMENT

(a)

BEARINGS ARE BASED ON: _____

FIELD BOOK _____ PAGE # _____

SHEET 1 OF 2

SHOW A PLAN VIEW DRAWING DEPICTING THE CORNER MONUMENT AND SURROUNDING PHYSICAL FEATURES, INCLUDING THE EXCAVATION AREA AND DEPTH.

PLANNING & ZONING COMMITTEE ADOPTED THE ABOVE FORM ON 12/2/1982

CORNER CODE 2-3

BE622

(B) Describe any record evidence, monument evidence, occupational evidence, testimonial evidence or any other material evidence you considered, and whether the monument was found or placed.

1832 LYONS PASSING THROUGH A DEEP PLASH? AND SOME SCATTERING BUR OAK TREES, SET POST FOR 1/4 SECTION CORNER. BUR OAK 16 S68E 212; NO OTHER BEARING.

1836 JANUARY 11TH ORIG SURVEY. INTERSECTING THE BASE LINE OF THE NORTH WEST TERRITORY AND NORTH BOUNDARY OF ILLINOIS 491.7' EAST OF THE QUARTER SECTION CORNER ON THE SOUTH BOUNDARY OF SECTION 31 T1N R12E OF THE 4TH PRINCIPLE MERIDIAN AND AT SAID INTERSECTION SET A POST FOR CORNER TO SECTIONS 3 4 T46N R1E OF THE 3RD PRINCIPLE MERIDIAN FROM WHICH POST A BLACK OAK 12" DIAMETER BEARS S45-30W 47.52' AND A BLACK OAK 15" DIAMETER BEARS S44-30E 42.9' DISTANT. CALLS FOR 1974.06' TO THE W 1/4 COR SEC 3. AT W 1/4 COR SEC 3 SET A POST FOR 1/4 COR IN WET GROUND.

192? TISSANDIER PLACED CONCRETE MONUMENT WITH BRASS PLUG. DROVE I.P. BY MONUMENT. LAT 42-30-23.5 LONG 89-08-29.48. 5259.30 TO NW COR SEC 4, 5220.00 TO NE COR SEC 3, AN ANGLE OF 179-55-20 FROM NW COR SEC 4 TO NE COR SEC 3.

1975 SPRAGUE MAP SHOWS THE FOLLOWING COORDINATES: NAD27 N/S
182,358.03; E/W 2,237,346.406

CORNER IS IN CREEK. DID NOT PLACE MONUMENT. CORNER IS ON LINE WITH THE NE COR SEC 3 AND THE SW CORNER OF SEC 31. THE FOUND PIPE IS 0.28' SOUTH OF THAT LINE.

C) Was the corner restored through acceptance of (1) an obliterated evidence location, or, (2) a found perpetuated location?
RESTORED CORNER THROUGH ACCEPTANCE OF OBLITERATED EVIDENCE LOCATION.

D) Describe any material discrepancy between the location of the corner as restored or reestablished and the location of that corner as previously restored or reestablished by distance and direction. Show the discrepancy on the plan view drawing under (a), above. Show the distances between the corner as previously restored or reestablished and (1) the corner as restored or reestablished, and (2) to at least 4 of the witness monuments shown on the drawing in (a), above.

(E) Was the corner reestablished through lost corner proportionate methods? If so, show the method, including the directions and distances to other public land survey corners used as evidence or used for proportioning the corner location.

NO

I, Donald Barnes, hereby certify that the corner points as identified by the corner code index were, in a field survey on, APRIL 21, 1998, established, re-established, monumented, re-monumented, recovered or restored as expressed below and in conformance with the regulations and rules as required in the current manual of survey instructions of the United States Department of Interior, Bureau of Land Management.

seal
Donald Barnes
April 21, 1998

COUNTY SURVEYOR FILING DATA

Date of computer entry _____

Date microfilmed _____

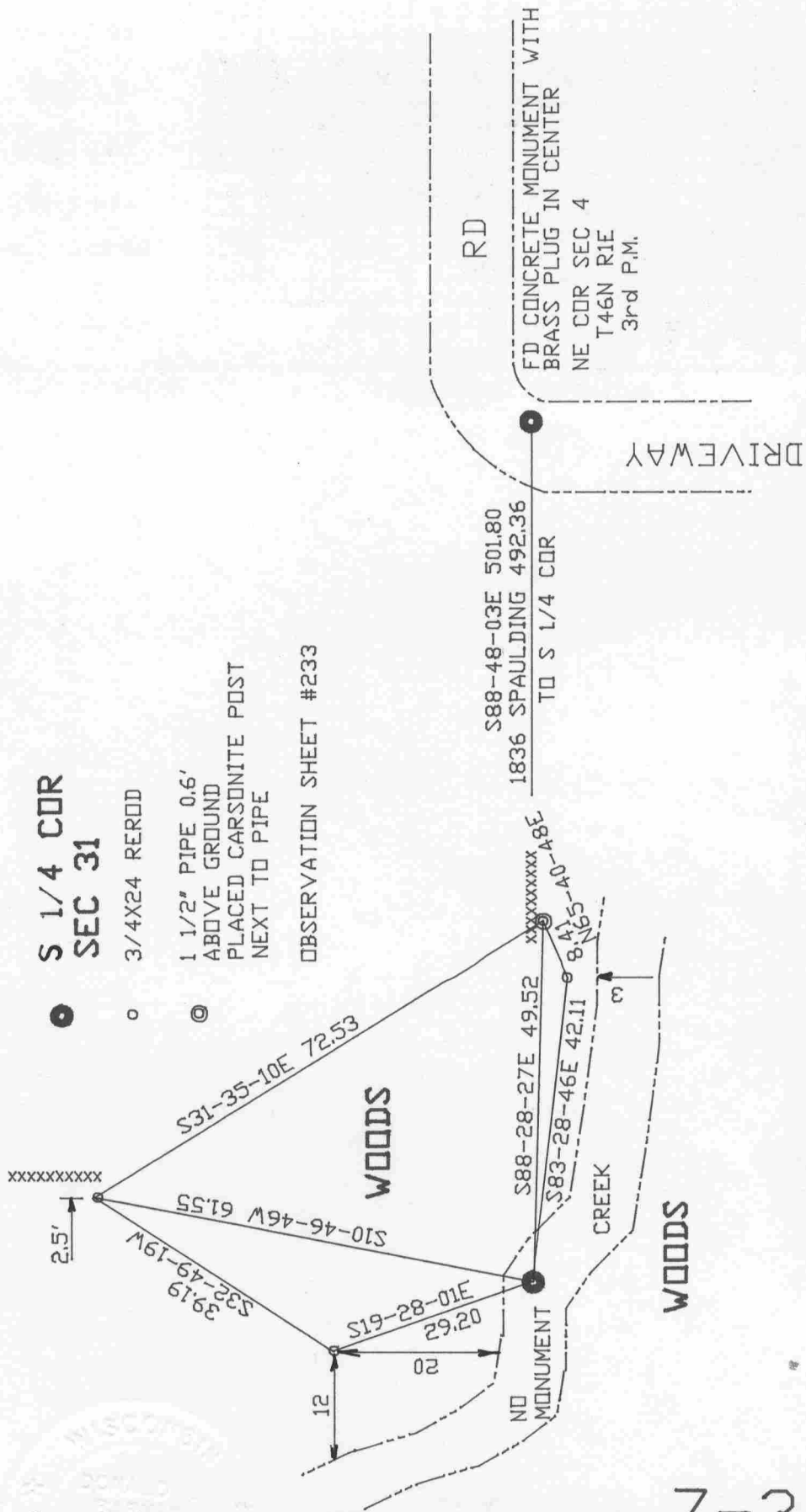
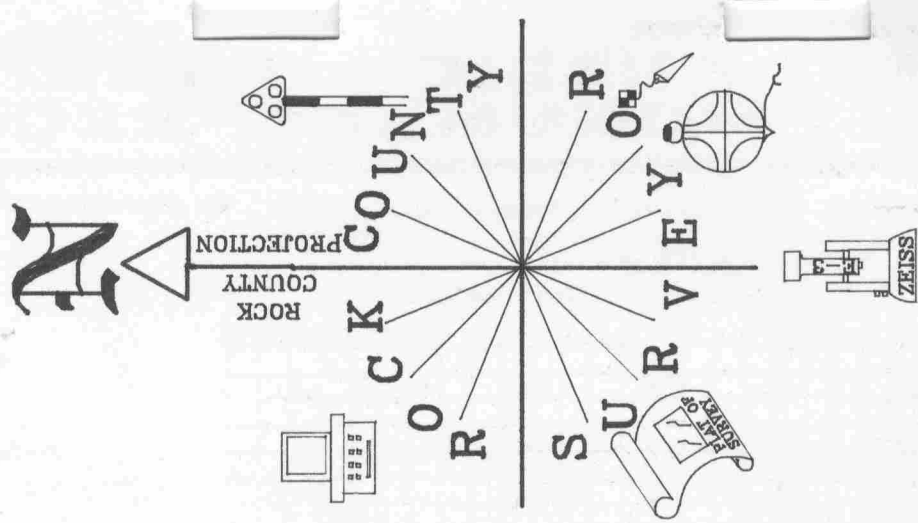
Number of included sheets _____

CORNER CODE

EMBOSS LAND SURVEYOR SEAL

A-E 7.08 REQUIREMENT

2-3



EMBOSED SEAL
 Ronald Barnes
 April 21, 1998

Z-3