

U.S. PUBLIC LAND SURVEY MONUMENT RECORD

For Public Land Survey Corners in:

WI ADMINISTRATIVE CODE A-E 7.08 REQUIREMENT

T. 1N., R. 12E

BELOIT TWP

CORNER CODE INDEX

TWP

ROCK COUNTY WI

IF AVAILABLE

ROCK COUNTY COORDINATES PREFERRED

	1	2	3	4	5	6	7	8	9	10	11	12	13	14	15	16	17	18	19	20	21	22	23	24	25
A																									
B																									
C	6																								
D																									
E																									
F																									
G	1																								
H																									
I																									
J																									
K																									
L	18																								
M																									
N																									
O																									
P	19																								
Q																									
R																									
S																									
T	30																								
U																									
V																									
W																									
X	31																								
Y																									
Z																									

North _____ Elev. _____

East _____

Hor. Datum _____ Vert. Datum _____

LATITUDE _____ ELLIPS. HT. _____

LONGITUDE _____

GPS (X) _____ TRAVERSE (X) _____

BASED ON THE FOLLOWING CONTROL:

PLACE MONUMENT SYMBOL AT PROPER LOCATION ON ABOVE INDEX

CORNER MONUMENT

WITNESS MONUMENT

(a)

BEARINGS ARE BASED ON:

FIELD BOOK _____ PAGE # _____

SHEET 1 OF 2

SHOW A PLAN VIEW DRAWING DEPICTING THE CORNER MONUMENT AND SURROUNDING PHYSICAL FEATURES, INCLUDING THE EXCAVATION AREA AND DEPTH.

PLANNING & ZONING COMMITTEE ADOPTED THE ABOVE FORM ON 12/2/1982

CORNER CODE V-3

BE 602

(B) Describe any record evidence, monument evidence, occupational evidence, testimonial evidence or any other material evidence you considered, and whether the monument was found or placed.

- 1834 HARRISON WEST BET SEC 30 & 31 ON RAND.
495 BROOK 6.6' CRS S.W.
2640 TEMPY 1/4 SEC COR.
2838 BROOK 9.24' CRS S.E.
5217.3 INT. WEST BOUNDARY 10.56' SOUTH OF POST & ESTABLISH COR TO SEC 30 7 31. BEARINGS {BURR OAK 30 N15E 104.94' BURR OAK 18 S29E 19.14' COR. EAST BET 30 & 31
2577.3 QUARTER SEC COR. BUR OAK 14 N47W 25.08', RED OAK 18 S76E 104.28'
5217.3 SEC COR.
1931 SUNNY VOL 3 PG 189 DID NOT SEARCH FOR CORNER AT THIS POINT. ROAD AT THIS POINT WAS AN UNSTABLE MUD HOLE FOR YEARS. HAD REASON TO BELIEVE THAT THE CORNER IF THERE WAS ANY, WAS LOST YEARS AGO.
1959 BATTERMAN VOL 4 PG 6 2641.33 TO NE COR SEC 31, 2654.34 TO CENTER OF SEC 31. WPL N/S 187,672.52;E/W 2,237,256.51
1969 BATTERMAN VOL 4 PG 399 CROSS SCRIBED IN CEMENT. REFERENCED SAME.
1975 SPRAGUE MAP #6044 CALLS FOR 2654.44 TO CENTER OF SEC 31, 2641.51 TO SE COR SEC 30, & 2622.66 TO SW COR SEC 30
1976 BARNES VOL 5 PG 128 SET PK & REFERENCED SAME.
1979 BARNES VOL 6 PG 3 FOUND CUT "X" THAT AGREES WITH TIES. SET ALUM MON.
1983 LEE MAP #14004 CALLS FOR 2641.53 TO SE COR SEC 30, 2658.86 TO CENTER OF SEC 30, & ANGLE OF 88-10-00 AT SE COR SEC 30 FROM S 1/4 COR TO E 1/4 COR SEC 30.

FOUND ALUM. MON.

C) Was the corner restored through acceptance of (1) an obliterated evidence location, or, (2) a found perpetuated location?
ACCEPTED FOUND LOCATION.

D) Describe any material discrepancy between the location of the corner as restored or reestablished and the location of that corner as previously restored or reestablished by distance and direction. Show the discrepancy on the plan view drawing under (a), above. Show the distances between the corner as previously restored or reestablished and (1) the corner as restored or reestablished, and (2) to at least 4 of the witness monuments shown on the drawing in (a), above.

(E) Was the corner reestablished through lost corner proportionate methods? If so, show the method, including the directions and distances to other public land survey corners used as evidence or used for proportioning the corner location.
NO

I, Donald Barnes, hereby certify that the corner points as identified by the corner code index were, in a field survey on, established, re-established, monumented, re-monumented, recovered or restored as expressed below and in conformance with the regulations and rules as required in the current manual of survey instructions of the United States Department of Interior, Bureau of Land Management.

COUNTY SURVEYOR FILING DATA

Date of computer entry _____

Date microfilmed _____

Number of included sheets 1

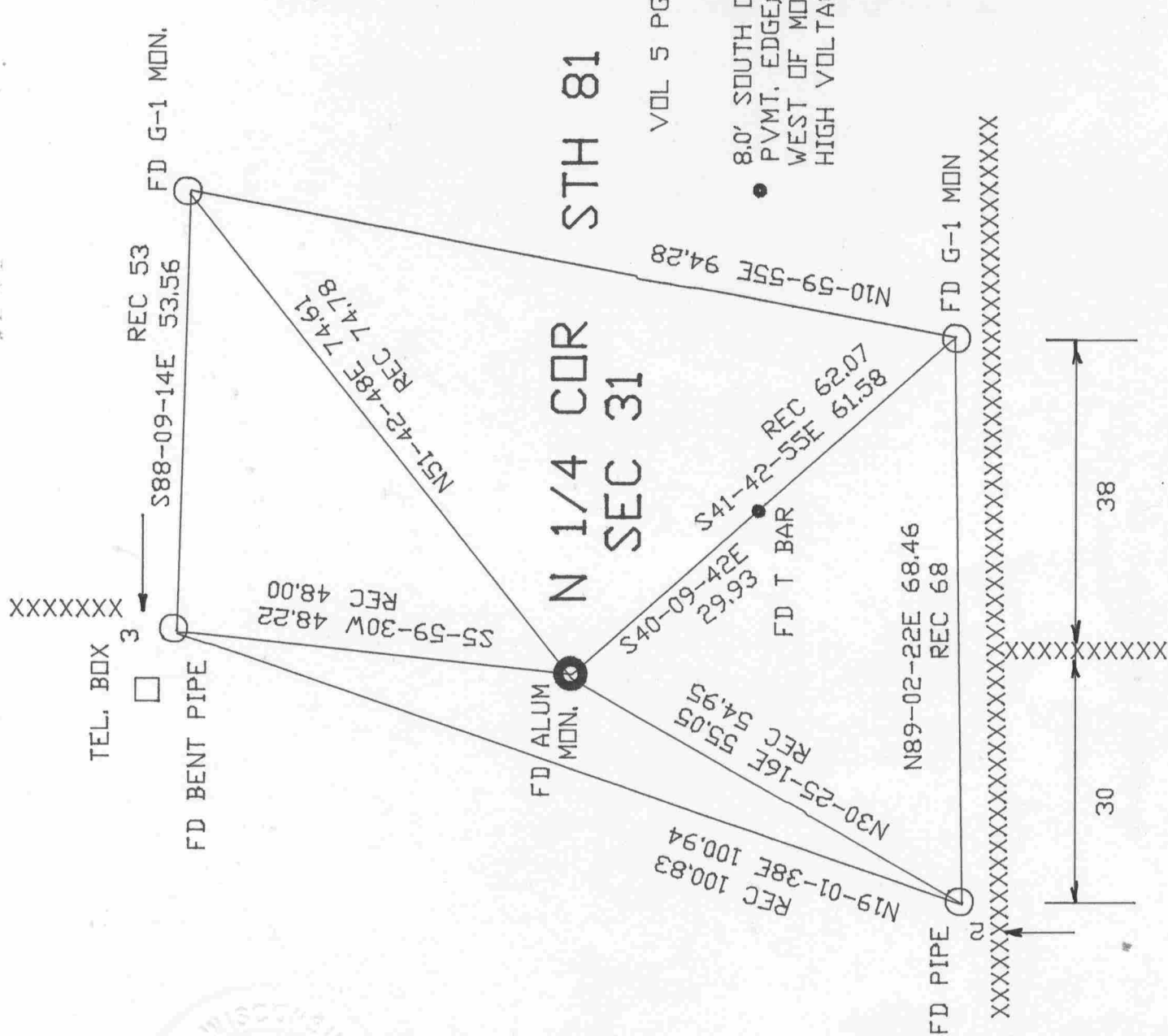
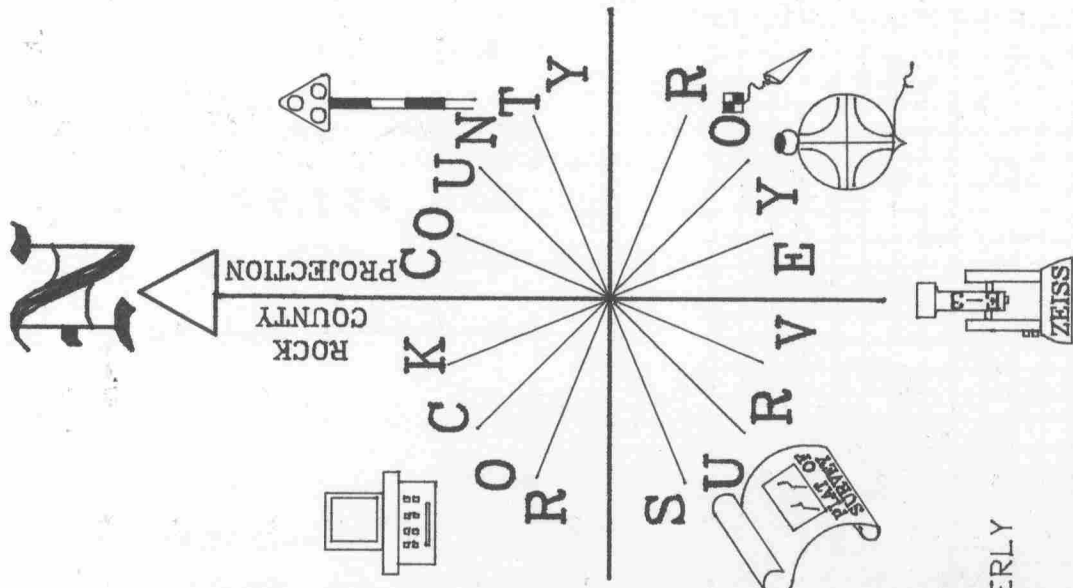
CORNER CODE

EMBOSS LAND SURVEYOR SEAL

A-E 7.08 REQUIREMENT

V-3

seal
Donald Barnes
OCT 16, 1998



Donald Barnes
OCT 19, 1998

V-3