

PUBLIC LAND SURVEY MONUMENT RECORD

For Public Land Survey Corners in the

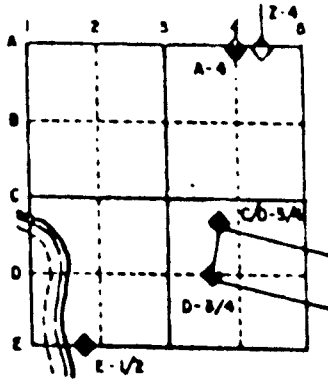
T. 1 N., R. 13 E

CORNER CODE INDEX

	1	2	3	4	5	6	7	8	9	10	11	12	13	14	15	16	17	18	19	20	21	22	23	24	25
A																									
B	6																								
C		5																							
D			4																						
E				3																					
F					2																				
G	7																								
H		8																							
I			9																						
J				10																					
K					11																				
L						12																			
M							13																		
N								14																	
O									15																
P										16															
Q											17														
R												18													
S													19												
T														20											
U															21										
V																22									
W																	23								
X																		24							
Y																									
Z																									

PLACE MONUMENT SYMBOL (●) AT PROPER LOCATION ON ABOVE INDEX

EXAMPLE



TURTLE TWP
ROCK COUNTY WI

IF AVAILABLE
STATE PLANE COORDINATES

North (Y) _____ Elev. (Z) _____
 East (X) _____ Zone _____
 Hor. Datum _____ Vert. Datum _____

◆ CORNER MONUMENT

○ WITNESS MONUMENT

BEARINGS ARE BASED ON:

SHEET 1 OF 2

713
CORNER CODE:

(B) Describe any record evidence, monument evidence, occupational evidence, testimonial evidence or any other material evidence you considered, and whether the monument was found or placed.

1966 BATTERMAN VOL 4 PG 247 FOUND PIN AT E 1/4 COR & R/R SW OF COR. REFERENCED BOTH POINTS. DISTANCE BETWEEN TWO IS 3.79'

1968 BATTERMAN VOL 4 PG 376 FOUND 1" PIPE. 2649.54 TO SW COR SEC 27 & ANGLE AT SW COR FROM W 1/4 COR SEC 27 TO S 1/4 COR SEC 27 IS 92-08-44.

FOUND PIPE 2651.26 TO SW COR SEC 27 & ANGLE OF 92-08-45 AT SW COR SEC 27 FROM W 1/4 COR SEC 27 TO S 1/4 COR SEC 27.

C) Was the corner restored through acceptance of (1) an obliterated evidence location, or, (2) a found perpetuated location?

FOUND PERPETUATED LOCATION.

D) Describe any material discrepancy between the location of the corner as restored or reestablished and the location of that corner as previously restored or reestablished by distance and direction. Show the discrepancy on the plan view drawing under (a), above. Show the distances between the corner as previously restored or reestablished and (1) the corner as restored or reestablished, and (2) to at least 4 of the witness monuments shown on the drawing in (a), above.

(E) Was the corner reestablished through lost corner proportionate methods? If so, show the method, including the directions and distances to other public land survey corners used as evidence or used for proportioning the corner location.

NO

I, Donald Barnes, hereby certify that the corner points as identified by the corner code index were, in a field survey on, 1995, established, re-established, monumented, re-monumented, recovered or restored as expressed below and in conformance with the regulations and rules as required in the current manual of survey instructions of the United States Department of Interior, Bureau of Land Management.

COUNTY SURVEYOR FILING DATA

Date of computer entry _____

Date microfilmed _____

Number of included sheets 1
CORNER CODE

seal
Donald Barnes
Oct 6, 1995

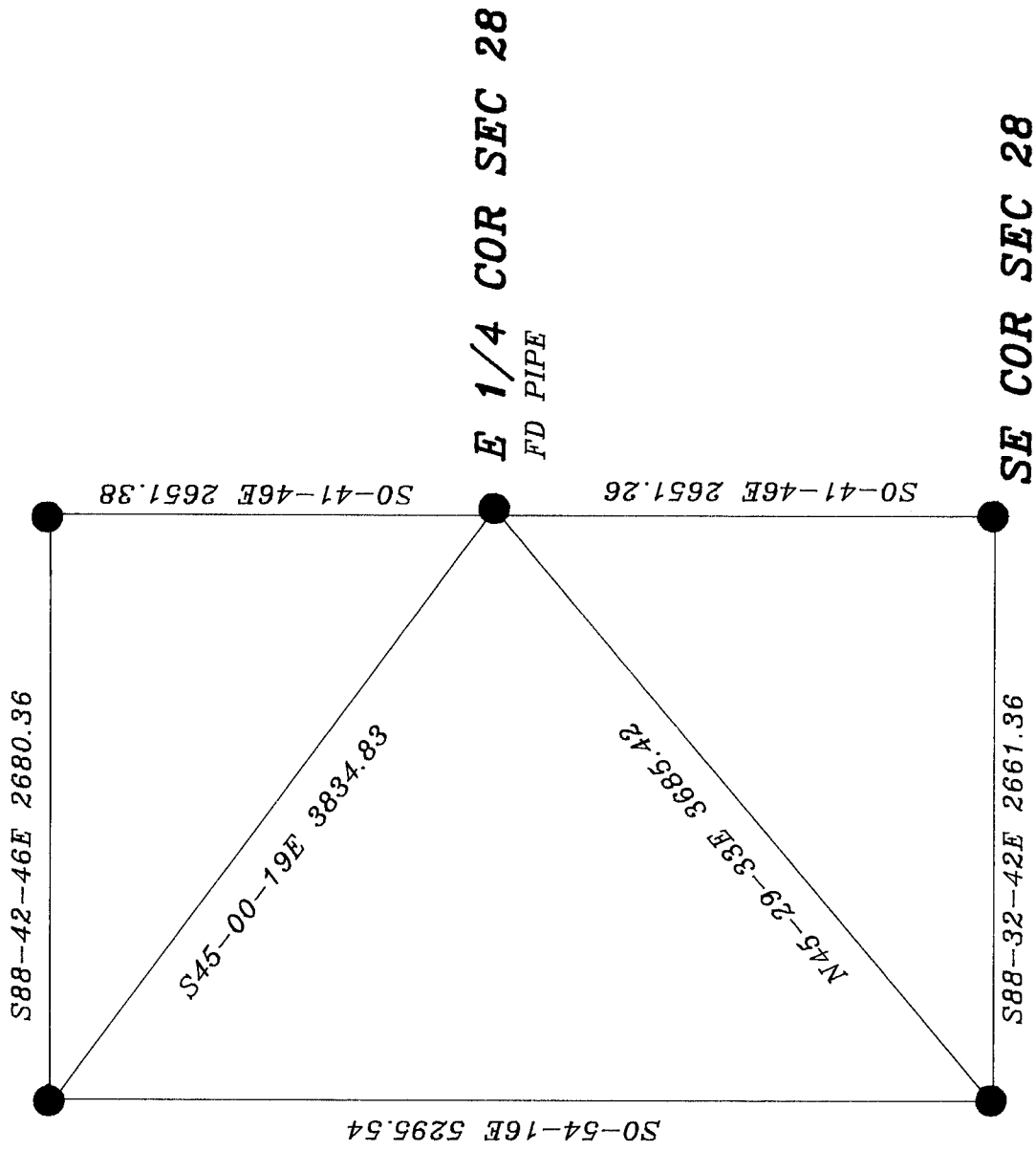
EMBOSS LAND SURVEYOR SEAL

A-E 7.08 REQUIREMENT

713

N 1/4 COR
SEC 28

NE COR SEC 28



SE COR SEC 28

Donald Barnes
OCT 6, 1995

S 1/4 COR
SEC 28

