

U.S. PUBLIC LAND SURVEY MONUMENT RECORD

For Public Land Survey Corners in:

T. 1N., R. 12E

CORNER CODE INDEX

WI ADMINISTRATIVE CODE A-E 7.08 REQUIREMENT

BELOIT TWP TWP

ROCK COUNTY WI

IF AVAILABLE
ROCK COUNTY COORDINATES PREFERRED

A	1	2	3	4	5	6	7	8	9	10	11	12	13	14	15	16	17	18	19	20	21	22	23	24	25
B																									
C	6																								
D																									
E																									
F	1	8																							
G																									
H																									
J																									
K																									
L	18	17																							
M																									
N																									
O																									
P	19	20																							
Q																									
R																									
S	30	29																							
T																									
U																									
V																									
W																									
X	31	32																							
Y																									
Z																									

North 214,423.71 Elev. _____

East 480,339.24

Hor. Datum COUNTY Vert. Datum _____

LATITUDE _____ ELLIPS. HT. _____

LONGITUDE _____

GPS (X) _____ TRAVERSE (X) _____

BASED ON THE FOLLOWING CONTROL:

PLACE MONUMENT SYMBOL AT PROPER LOCATION ON ABOVE INDEX

CORNER MONUMENT

WITNESS MONUMENT

(a)

BEARINGS ARE BASED ON: _____

FIELD BOOK _____ PAGE # _____

SHEET 1 OF 2

SHOW A PLAN VIEW DRAWING DEPICTING THE CORNER MONUMENT AND SURROUNDING PHYSICAL FEATURES, INCLUDING THE EXCAVATION AREA AND DEPTH.

PLANNING & ZONING COMMITTEE ADOPTED THE ABOVE FORM ON 12/2/1982

CORNER CODE P-13

BE577

(B) Describe any record evidence, monument evidence, occupational evidence, testimonial evidence or any other material evidence you considered, and whether the monument was found or placed.

1834 HARRISON NORTH BETWEEN SECS 21 & 22
1980 TO THE SUMMIT OF RIDGE CR W
2310 TO THE TRAIL TO TURTLE VILLAGE
2640 QUARTER SEC COR. SET POST & RAISED MOUND ON GROUND
DESCENDING EAST
5280 SET COR TO SECS 14,16,21,22 SET POST & RAISED A MOUND
AT THE HEAD OF SMALL RAISING CRS E.
1859 RUGER VOL 1 PG 96 SURROUNDED 1/4 POST BY 4 HH VAR 6-26 TO CENTER
OF SEC 21,5301.12 TO W 1/4 COR SEC 21, & VAR 6-26 TO W 1/4 COR SEC
21.
1950 BATTERMAN SR. MAP 80022 FOUND PIN
1956 BATTERMAN MAP #442 FOUND PIN 2669.9 TO NE COR SEC 21.
1958 SHIMEALL MAP #443 FOUND 1" IRON PIN. 2660.80 TO SE COR SEC 21
1970 LEE MAP #457 FOUND 1" IRON PIN SEE SUB
1970 LEE CSM V1 PG 286 FOUND PIN
1972 LEE SUBDIVISION PLAT BK 26 PG 15 FOUND 1" PIPE
1987 COMBS CSM V1 PG 146 FOUND PIN

FD PIN.

C) Was the corner restored through acceptance of (1) an obliterated evidence location, or, (2) a found perpetuated location?
ACCEPTED FOUND PERPETUATED LOCATION.

D) Describe any material discrepancy between the location of the corner as restored or reestablished and the location of that corner as previously restored or reestablished by distance and direction. Show the discrepancy on the plan view drawing under (a), above. Show the distances between the corner as previously restored or reestablished and (1) the corner as restored or reestablished, and (2) to at least 4 of the witness monuments shown on the drawing in (a), above.

(E) Was the corner reestablished through lost corner proportionate methods? If so, show the method, including the directions and distances to other public land survey corners used as evidence or used for proportioning the corner location.

NO

I, Donald Barnes, hereby certify that the corner points as identified by the corner code index were, in a field survey, established, re-established, monumented, re-monumented, recovered or restored as expressed below and in conformance with the regulations and rules as required in the current manual of survey instructions of the United States Department of Interior, Bureau of Land Management.

Donald Barnes
OCT 16, 1998

COUNTY SURVEYOR FILING DATA

Date of computer entry _____

Date microfilmed _____

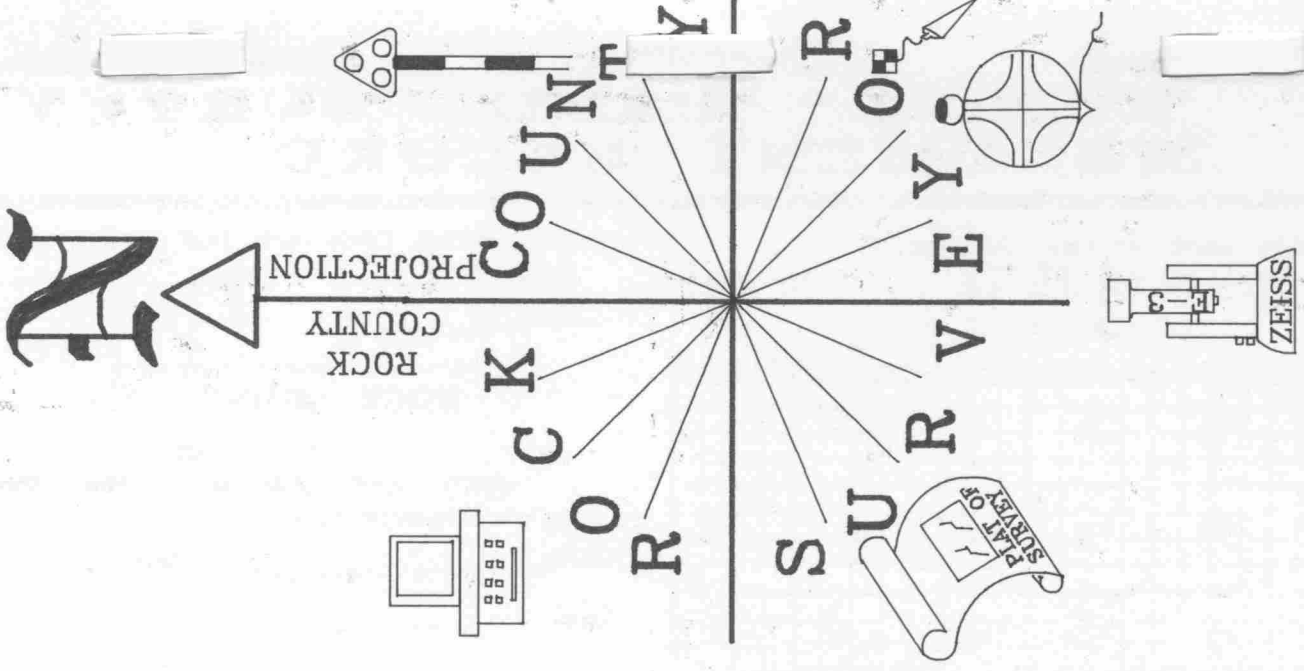
Number of included sheets _____

CORNER CODE

EMBOSS LAND SURVEYOR SEAL

A-E 7.08 REQUIREMENT

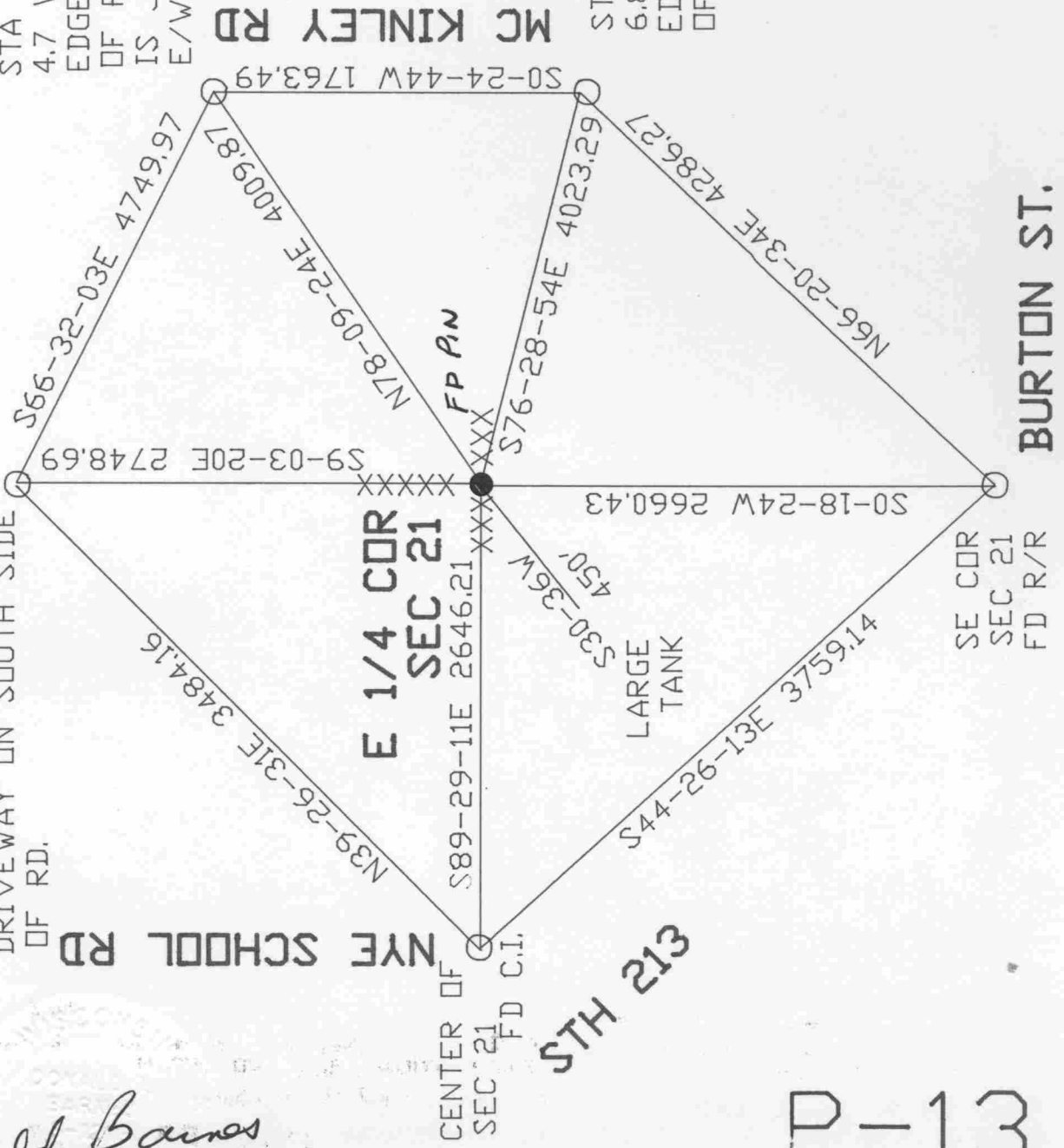
9-13



STA #9426J ILL CAP
ON REROD; 36' +/-
NORTH CENTER PVMT;
73+ +/- EAST OF CENTER
DRIVEWAY ON SOUTH SIDE
OF RD.

STA #714 3/4X24 REROD
4.7 WEST OF WEST PVMT,
EDGE; ON NORTH LINE
OF FIELD ENT. THAT
IS JUST SOUTH OF
E/W FENCE.

STA #868 3/4X24 REROD;
6.8' WEST OF WEST
EDGE PVMT; SOUTH EDGE
OF FIELD ENT.



Donald Barnes
OCT 16, 1998

P-13