

U.S. PUBLIC LAND SURVEY MONUMENT RECORD

For Public Land Survey Corners in:
T. 1N., R. 12E 4th P.M.
CORNER CODE INDEX

WI ADMINISTRATIVE CODE A-E 7.08 REQUIREMENT

BELOIT TWP TWP

ROCK COUNTY, WI

IF AVAILABLE
ROCK COUNTY COORDINATES PREFERRED

North 222,400.80 Elev. _____

East 480,390.32

Hor. Datum COUNTY Vert. Datum _____

LATITUDE _____ ELLIPS. HT. _____

LONGITUDE _____

ELLIPS. DATUM
NAD83(91) _____ COUNTY _____ LIST _____

GPS (X) _____ TRAVERSE (X) _____

BASED ON THE FOLLOWING CONTROL:

A	2	3	4	5	6	7	8	9	10	11	12	13	14	15	16	17	18	19	20	21	22	23	24	25
B	6	5	4	3	2	1																		
C																								
D																								
E																								
F																								
G	7	8	9	10	11	12																		
H																								
I																								
J																								
K																								
L																								
M	18	17	16	15	14	13																		
N																								
O																								
P	19	20	21	22	23	24																		
Q																								
R																								
S	30	29	28	27	26	25																		
T																								
U																								
V																								
W																								
X																								
Y																								
Z																								

PLACE MONUMENT SYMBOL  AT PROPER LOCATION ON ABOVE INDEX

 CORNER MONUMENT

WITNESS MONUMENT

(a)

BEARINGS ARE BASED ON:

FIELD BOOK _____ PAGE # _____

SHEET 1 OF 2

SHOW A PLAN VIEW DRAWING DEPICTING THE CORNER MONUMENT AND SURROUNDING PHYSICAL FEATURES, INCLUDING THE EXCAVATION AREA AND DEPTH.

PLANNING & ZONING COMMITTEE ADOPTED THE ABOVE FORM ON 12/2/1982

CORNER CODE 5-13

BE547

(B) Describe any record evidence, monument evidence, occupational evidence, testimonial evidence or any other material evidence you considered, and whether the monument was found or placed.

1834 HARRISON NORTH BET. SECTIONS 15 & 16
 2640 QUARTER SEC COR. SET POST & MOUND ON A RIDGE CRS E & W.
 5280 SET COR TO SECS 9,10 15,16 AT THE HEAD OF SMALL RAVINE
 BEARING S.E. SET POST & MOUND
 NORTH BETWEEN SECTIONS 9 & 10
 2640 LEAVE PRAIRIE & SET CORNER TO QUARTER SEC IN TIMBER {RED
 OAK 12 N78W 30.36'; RED OAK 12 S62E 33.66'
 2831.4 WHITE OAK 12 IN DIAM
 3217.5 HICKORY 10 IN DIAM
 3758.7 WHITE OAK 12 IN DIAM.
 4224 LEAVE TIMBER & ENTER PRAIRIE
 5280 SET POST FOR COR TO SECS 3,4,9,10 RAISED MOUND OF SOD ON
 GROUND DESCENDING N TO CREEE.
 EAST ON RANDOM BETWEEN SEC 10 & 15
 2640 TEMPY 1/4 SEC COR.
 3462.36 LEAVE PRAIRIE & ENTER THICKET
 4818 LEAVE THICKET & ENTER TIMBER
 5244.36 INT. EAST BOUNDARY 20.46 NORTH OF POST.
 COR. WEST
 SET POST & RAISED MOUND ON SMALL POINT CRS S.W.
 5244.36 SEC COR.
 EAST ON RAND BETWEEN SECS 9 & 16
 297 TO SUMMIT OF RIDGE EAST SIDE OF DRAUGHT
 2640 TEMPY 1/4 SEC COR.
 5259.54 ENT. EAST BOUNDARY 26.4' SOUTH OF POST.
 COR. WEST
 2629.77 QUARTER SEC COR ON HIGH GROUND SET POST & MOUND
 5259.54 SEC COR.
 1851 McVEAN VOL 1 PG 2 5244.36 TO SE COR SEC 10.
 1966 BATTERMAN VOL 4 PG 291 NO RECORD IN VOL DUG & FD FLINTSTONE 12X3X8
 SURROUNDED BY HH WHICH APPEARED TO BE THE BEST EVIDENCE OF THE
 LOCATION OF THE ORIGINAL CORNER. SET CONCRETE MON. OVER STONE
 0.5' W & 1.1' N OF FENCE COR. SET YELLOW POST 2' NW OF MON.
 2642.35 TO N 1/4 COR SEC 16, 2629.00 TO N 1/4 COR SEC 15, 2654.38 TO W
 1/4 COR SEC 10, & 2652.47 TO W 1/4 COR SEC 15.

FOUND BRASS DISK IN CONCRETE MONUMENT.

C) Was the corner restored through acceptance of (1) an obliterated evidence location, or, (2) a found perpetuated location?
ACCEPTED FOUND CONCRETE MONUMENT,

D) Describe any material discrepancy between the location of the corner as restored or reestablished and the location of that corner as previously restored or reestablished by distance and direction. Show the discrepancy on the plan view drawing under (a), above. Show the distances between the corner as previously restored or reestablished and (1) the corner as restored or reestablished, and (2) to at least 4 of the witness monuments shown on the drawing in (a), above.

I, Donald Barnes, hereby certify that the corner points as identified by the corner code index were, in a field survey on, established, re-established, monumented, re-monumented, recovered or restored as expressed below and in conformance with the regulations and rules as required in the current manual of survey instructions of the United States Department of Interior, Bureau of Land Management.

COUNTY SURVEYOR FILING DATA

Date of computer entry _____

Number of included sheets _____

CORNER CODE

Donald Barnes
Oct 9, 1998

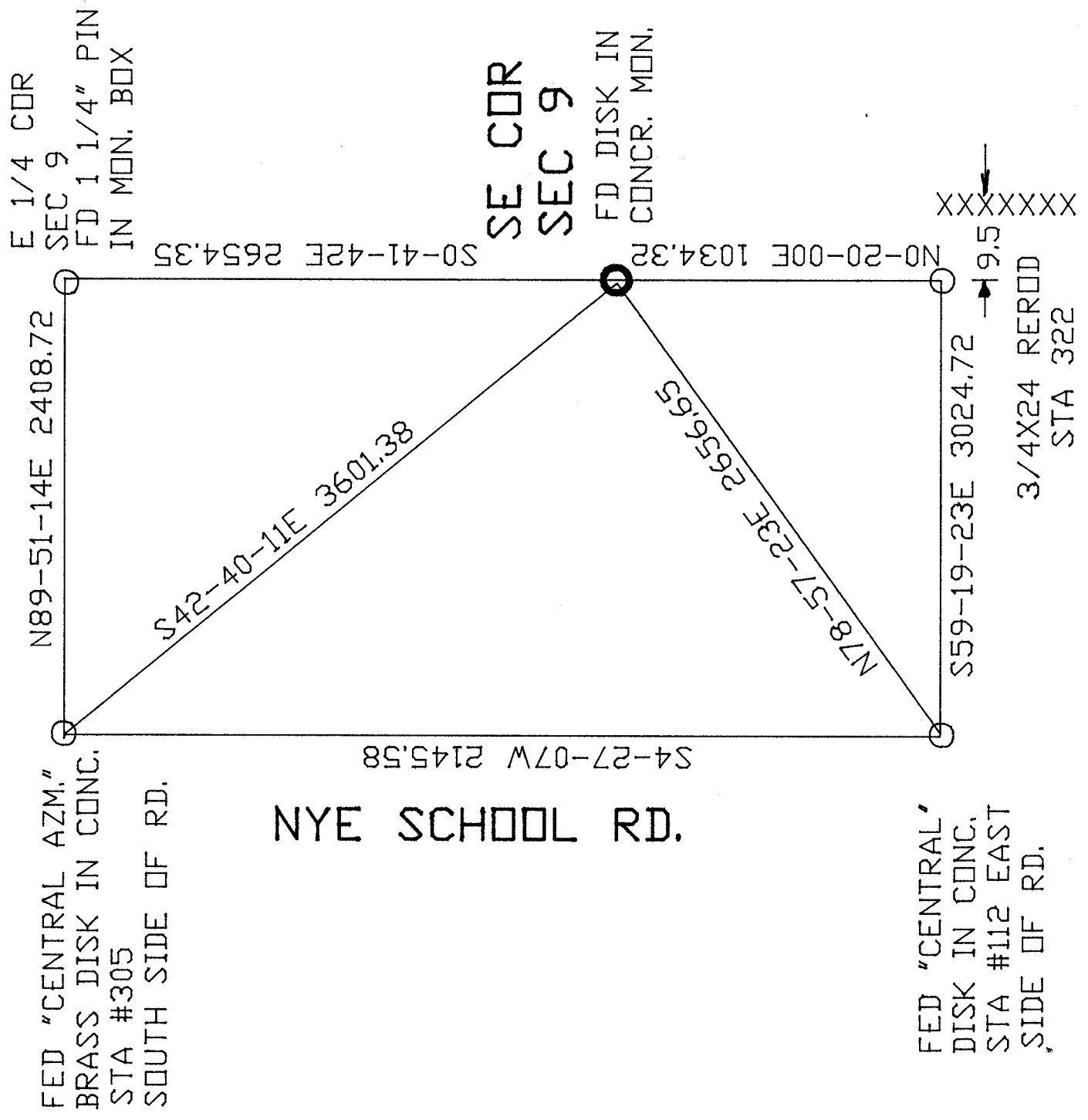
EMBOSS LAND SURVEYOR SEAL

A-E 7.08 REQUIREMENT

J-13

Donald Barnes
 Oct 19, 1998

J-13



N

ROCK COUNTY
 PROJECTION

ROCK COUNTY
 SURVEY

