

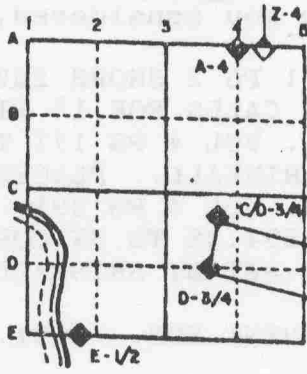
U.S. PUBLIC LAND SURVEY MONUMENT RECORD

For Public Land Survey Corners in the
T. 1 N., R. 12 E.

CORNER CODE INDEX

	1	2	3	4	5	6	7	8	9	10	11	12	13	14	15	16	17	18	19	20	21	22	23	24	25
A																									
B																									
C	6																								
D		5																							
E			4																						
F				3																					
G	7																								
H		8																							
I			9																						
J				10																					
K					11																				
L						12																			
M							13																		
N								14																	
O									15																
P										16															
Q											17														
R												18													
S													19												
T														20											
U															21										
V																22									
W																	23								
X																		24							
Y																									
Z																									

EXAMPLE



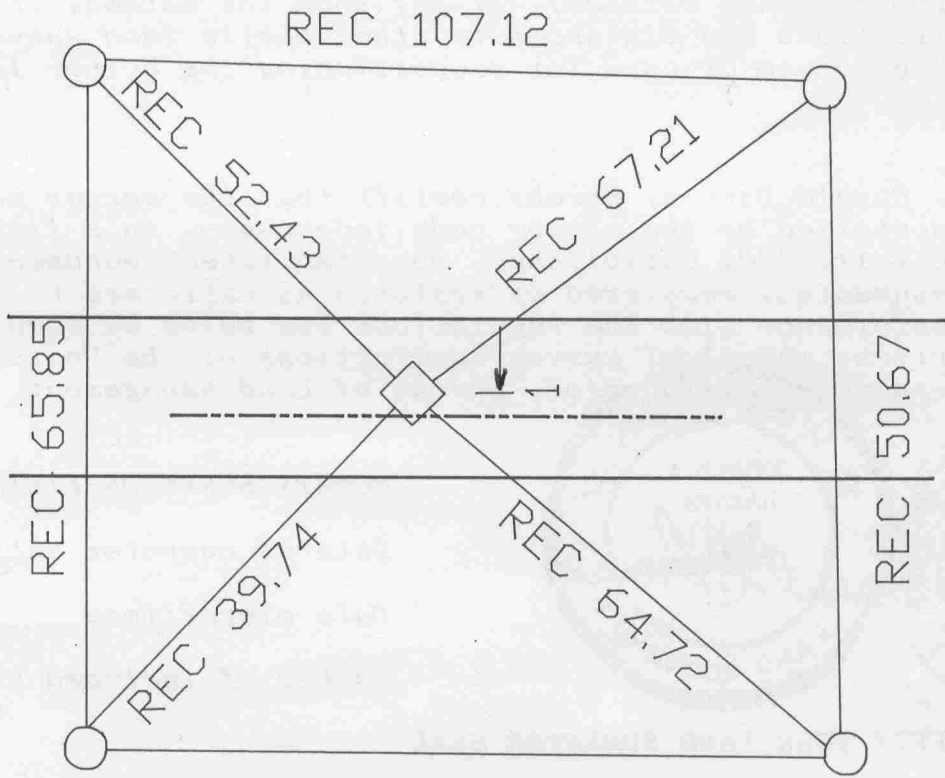
BELOIT TWP
ROCK COUNTY WI

IF AVAILABLE
STATE PLANE COORDINATES

North (Y) 225,054.95 Eleve. (Z) _____
East (X) 480,358.13 Zone _____
Hor. Datum _____ Vert. Datum _____

PLACE MONUMENT SYMBOL (◆) AT PROPER
LOCATION ON ABOVE INDEX

◆ CORNER MONUMENT ○ WITNESS MONUMENT



○ FD PIPE
◆ FD 1 1/4" PIN IN MON BOX
FB #2 PG 5
OLD TIES VOL 4 PG 171

STUMP

MICROFILMED

SHEET _____ OF _____

CORNER CODE: 613

BEARINGS ARE BASED ON:

(B) Describe any record evidence, monument evidence, occupational evidence, testimonial evidence or any other material evidence you considered, and whether the monument was found or placed.

1851 Mc VEAN VOL 1 PG 2 SHOWS 2695.44 TO CENTER OF SECTION 10. 19?? VOL 3 PG 542 CALLS FOR 1" PIN AT CORNER.

1963 BATTERMAN JR. VOL 4 PG 171 TIES FOR CORNER. CALLS FOR 1" PIN SET BY SHIMEALL. PLACED MONUMENT BOX.

1966 BATTERMAN JR. VOL 4 PG 291 SHOWS 2707.24 TO CENTER OF SECTION 10, 2654.38 TO SW CORNER OF SECTION 10. MONUMENT BOX SET OVER PIN SET BY SHIMEALL.

FOUND PIN IN MONUMENT BOX. 2591.75 TO PIPE AT CENTER OF SECTION 9.

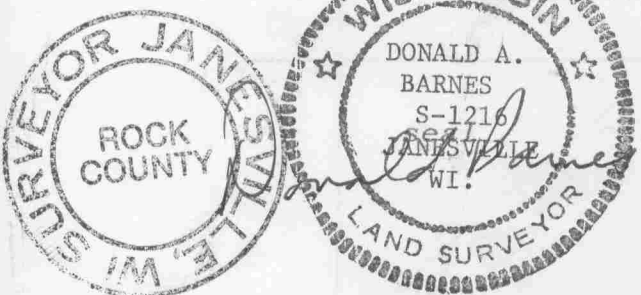
C) Was the corner restored through acceptance of (1) an obliterated evidence location, or, (2) a found perpetuated location?

ACCEPTED FOUND PIN IN MONUMENT BOX.

D) Describe any material discrepancy between the location of the corner as restored or reestablished and the location of that corner as previously restored or reestablished by distance and direction. Show the discrepancy on the plan view drawing under (a), above. Show the distances between the corner as previously restored or reestablished and (1) the corner as restored or reestablished, and (2) to at least 4 of the witness monuments shown on the drawing in (a), above.

(E) Was the corner reestablished through lost corner proportionate methods? If so, show the method, including the directions and distances to other public land survey corners used as evidence or used for proportioning the corner location.

I, Donald Barnes, hereby certify that the corner points as identified by the corner code index were, in a field survey on, JULY 11, 1990, established, re-established, monumented, re-monumented, recovered or restored as expressed below and in conformance with the regulations and rules as required in the current manual of survey instructions of the United States Department of the Interior, Bureau of Land Management.



AFFIX YOUR LAND SURVEYOR SEAL

COUNTY SURVEYOR FILING DATA
Date of computer entry _____
Date microfilmed _____
Number of included sheets 613
CORNER CODE

MICROFILMED