

U.S. PUBLIC LAND SURVEY MONUMENT RECORD

For Public Land Survey Corners in:

WI ADMINISTRATIVE CODE A-E 7.08 REQUIREMENT

T. 1 N., R. 12 E 4th P.M.

1201 TWP

CORNER CODE INDEX

A	1	2	3	4	5	6	7	8	9	10	11	12	13	14	15	16	17	18	19	20	21	22	23	24	25
B																									
C	6					5				A				3			2								
D																									
E																									
F																									
G	1					8				9				10			11				12				
H																									
J																									
K																									
L	18					17				16				15			14				13				
M																									
N																									
O																									
P	19					20				21				22			23				24				
Q																									
R																									
S																									
T	30					29				28				27			26				25				
U																									
V																									
W																									
X	31					32				33				34			35				36				
Y																									
Z																									

ROCK COUNTY, WI

IF AVAILABLE
ROCK COUNTY COORDINATES PREFERRED

North 228, 017.35 Elev. _____

East 464, 621.60

Hor. Datum COUNTY Vert. Datum _____

LATITUDE _____ ELLIPS. HT. _____

LONGITUDE _____

ELLIPS. DATUM
NAD83(91) _____ COUNTY _____ LIST _____

GPS (X) _____ TRAVERSE (X) _____

BASED ON THE FOLLOWING CONTROL:

PLACE MONUMENT SYMBOL  AT PROPER LOCATION ON ABOVE INDEX

 CORNER MONUMENT

WITNESS MONUMENT

(a)

BEARINGS ARE BASED ON:

FIELD BOOK _____ PAGE # _____

SHEET 1 OF 5

SHOW A PLAN VIEW DRAWING DEPICTING THE CORNER MONUMENT AND SURROUNDING PHYSICAL FEATURES, INCLUDING THE EXCAVATION AREA AND DEPTH.

PLANNING & ZONING COMMITTEE ADOPTED THE ABOVE FORM ON 12/2/1982

CORNER CODE E-1

BE 521

(B) Describe any record evidence, monument evidence, occupational evidence, testimonial evidence or any other material evidence you considered, and whether the monument was found or placed.

- 1833 MULLETT NORTH ON EAST SIDE SECTION 12
1320 ENTER PRAIRIE
2640 SET QUARTER SECTION POST IN PRAIRIE AND MADE MOUND
5280 SET POST CORNER SECTIONS 1 & 12 IN PRAIRIE AND MADE MOUND.
LAND ROLLING FIRST RATE FIRST 1/4 TIMBERED WHITE BLACK AND BUR OAK. LAST 3/4 PRAIRIE.
BY GOOD OBSERVATIONS & FOUND VAR OF NEEDLE 7-25
- 1834 MARCH 22 HARRISON WEST BETWEEN SEC 6 & 7
2640 TEMP 1/4 SEC COR.
5161.2 INT. WEST BOUNDARY 31.02' SOUTH OF POST MARKED SAME FOR COR TO SEC 6 & 7. LAND &? SAME
EAST COR. EAST
2521.2' QUARTER SEC COR. SET POST & MOUND IN HIGH GROUND.
5161.2' SEC COR.
- 1834 ORIGINAL GOV. PLAT SHOWS COMMON CORNER.
- 1848 NEWARK TWP RD BK 1 PG 44 COMMENCING AT THE WEST COR BETWEEN SEC 3 AND 10 IN THE TOWN OF NEWARK THENCE RUNNING EAST ON THE SEC LINE UNTIL IT INTERSECTS THE BELOIT AND MADISON RD BETWEEN SECS 1 AND 12 SAID RD TO BE 4 RODS WIDE THE SEC LINE TO BE THE CENTER OF THE RD.
- 1849 BELOIT TWP RD BK 1 PG 111 4 ROD RD. CENTERLINE TO COMMENCE AT A PT ON THE MADISON AND BELOIT RD 643.5' SOUTH OF THE SW QUARTER OF SEC 6, T1N R12E RUNNING THENCE DUE NORTH 5874' ON THE TOWN LINE BETWEEN NEWARK AND BELOIT TO THE NW COR SEC 6.
- 1870 RUGER VOL 2 PG 45 FOUND HH & REMAINS OF OLD STAKE UNDER IT.
2455.70 VAR 4-05 TO S 1/4 COR SEC 6.
- 1871 COLLINS- NEWARK REMONUMENTATION FIELD NOTES. NORTH ON EAST LINE SEC 12. VARIATION 5-30. ON OFFSET 16.5' WEST
2657.82 INTERSECTED 1/4 LINE 15.18' WEST OF CORNER. SET 1/4 STONE IN OLD MOUND. CORRECTED VARIATION 5-28
5328.18 INTERSECT- SECTION LINE 2.64' EAST OF CORNER. SET STONE FOR CORNER OF 1 & 12 IN REMAINS OF MOUND. CORRECTED VARIATION 4-57
EAST BETWEEN 1 & 12 VARIATION 6-05
2656.5 SET 1/4 STONE IN REMAINS OF MOUND
CONTINUED EAST VARIATION 5-55
5313.66 SECTION CORNER.
NORTH ON EAST LINE OF 1. VARIATION 5-45
2655.18 INTERSECTED 1/4 LINE 10.56' EAST OF CORNER. SET 1/4 STONE BY STUMPS OF WITNESS TREES. CORRECTED VARIATION 5-30. CONTINUED NORTH 0 VARIATION 5-15
5312.34 INTERSECTED TOWN LINE 7.26' EAST OF STONE SET FOR SE CORNER SEC 36 T2 R11. AGREEING WITH WITNESS TREES
CORRECTED VARIATION 5-05 OCTOBER 13, 1871
- 1881 LEE VOL 2 PG 328 FOUND MONUMENT @ SE COR 12. 2454.87 VAR 3-30 TO S 1/4 COR SEC 6.
- 19?? ?/? FOUND CUT STONE MON. SET MON. BOX & REFERENCED SAME. WPL N/S 209,002.46 E/W 2,234,587.59
- 1981 BARNES VOL 6 PG 132 FOUND MON. BOX 2653.13 TO N 1/4 COR SEC 12, WPL 2667.94 (GRID) TO W 1/4 COR SEC 7, COLLINS 1871 2670.36 TO E 1/4 COR SEC 12.
- 1981 BARNES VOL 6 PG 144 2458.73 WPL TO S 1/4 COR SEC 6, 2647.62 WPL TO W 1/4 COR SEC 6.
- 1983 DOT STH 213 5571-01-21 FOUND PIN 209,062.91;2,234,587.51 NAD27
- 1984 BARNES VOL 6 PG 314 DOT PROJECT 5571-01-21 1" PIN DOT COORDINATES SAME AS ABOVE.

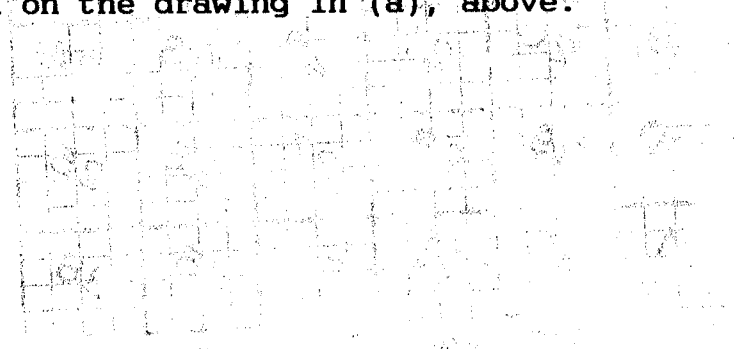
FD 1 1/2" PIN IN MONUMENT BOX.

E-1

C) Was the corner restored through acceptance of (1) an obliterated evidence location, or, (2) a found perpetuated location?
ACCEPTED FOUND PERPETUATED LOCATION.

D) Describe any material discrepancy between the location of the corner as restored or reestablished and the location of that corner as previously restored or reestablished by distance and direction. Show the discrepancy on the plan view drawing under (a), above. Show the distances between the corner as previously restored or reestablished and (1) the corner as restored or reestablished, and (2) to at least 4 of the witness monuments shown on the drawing in (a), above.

BOARD ON THE POSITION OF
COUNTY SURVEYOR
COUNTY OF
STATE OF



(E) Was the corner reestablished through lost corner proportionate methods? If so, show the method, including the directions and distances to other public land survey corners used as evidence or used for proportioning the corner location.
NO

I, Donald Barnes, hereby certify that the corner points as identified by the corner code index were, in a field survey on, established, re-established, monumented, re-monumented, recovered or restored as expressed below and in conformance with the regulations and rules as required in the current manual of survey instructions of the United States Department of Interior, Bureau of Land Management.

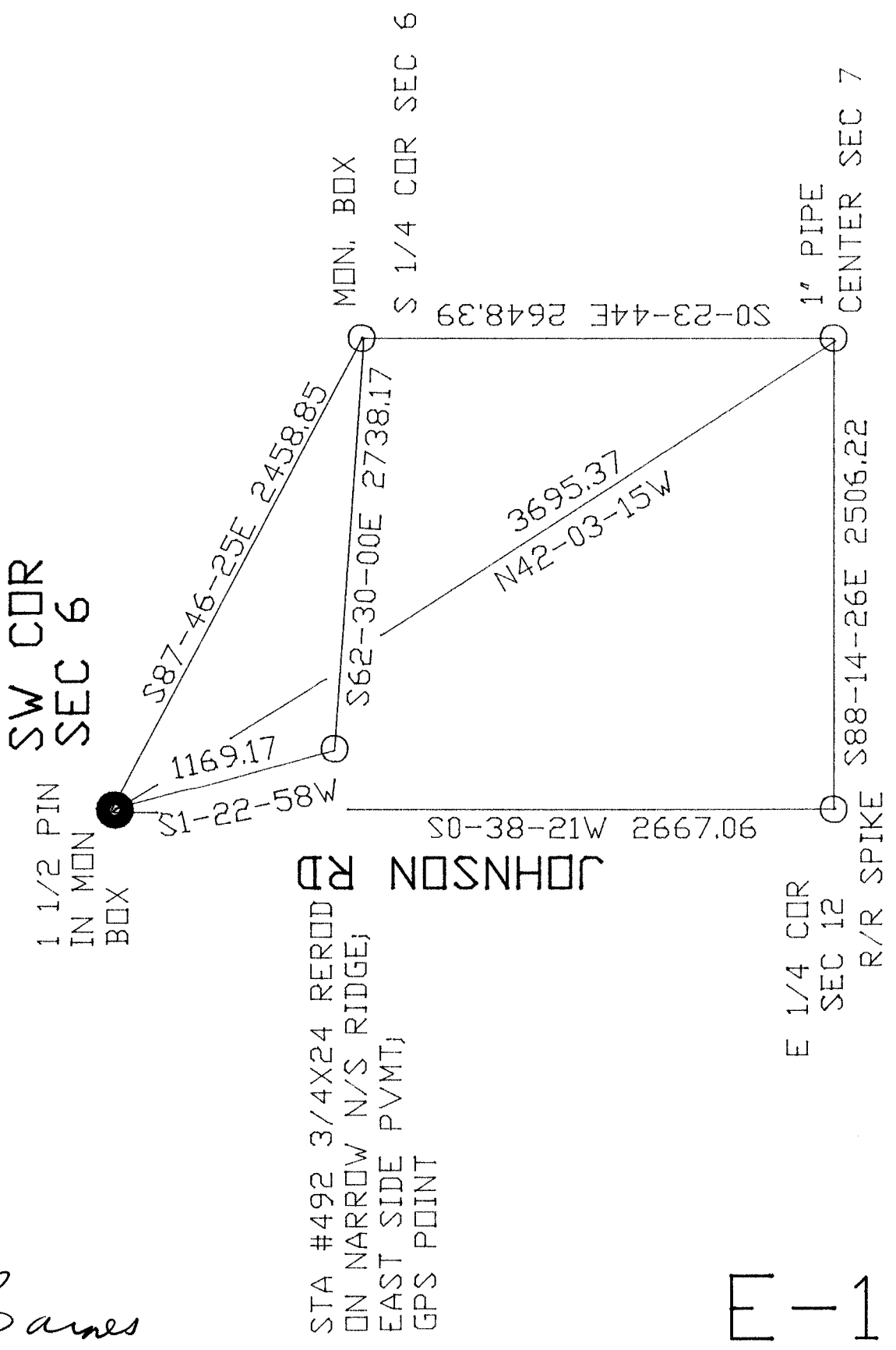
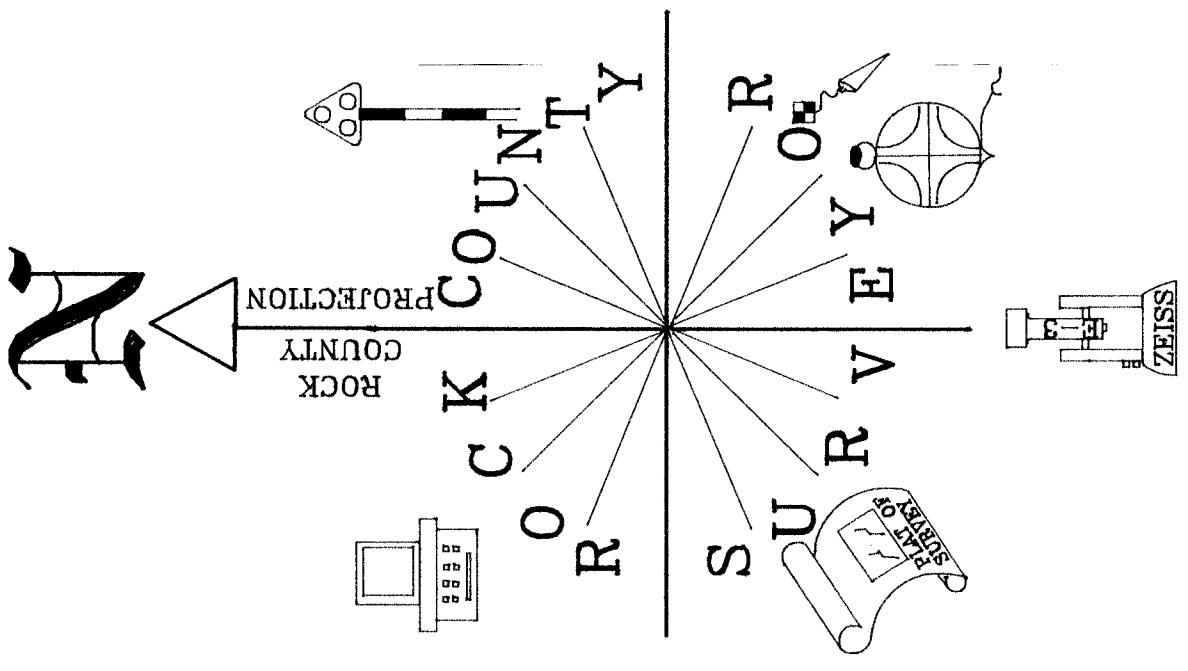
Donald Barnes
seal
Oct 9, 1998

COUNTY SURVEYOR FILING DATA
Date of computer entry _____
Date microfilmed _____
Number of included sheets _____
CORNER CODE

EMBOSS LAND SURVEYOR SEAL A-E 7.08 REQUIREMENT

E-1

Donald Barnes
 Oct 19, 1998



JOHNSON RD
 STA #492 3/4X24 REROD
 ON NARROW N/S RIDGE;
 EAST SIDE PVMT;
 GPS POINT

E-1

HARRISON SURVEYED THE FOLLOWING ROCK COUNTY TOWNSHIPS IN THE FOLLOWING ORDER:

		FIELD NOTE JOGS		PLAT	ACTUAL
		1833	ON WEST BNDY		
MARCH 14-17	1833	AVON SOUTH HALF	NO	1COR	NO
OCT 28-NOV 4	1833	PORTER	FEW	ALL	ALL
NOV 5-11	1833	UNION	YES	ALL	ALL
NOV 27-DEC 1	1833	CENTER	MOST	ALL	ALL
DEC 1-7	1833	MAGNOLIA	FEW	ALL	ALL
DEC 14-18	1833	JANESVILLE WEST HALF	NO	NO	NO
DEC 20-27	1833	PLYMOUTH	YES	NO	NO
		1834			
JAN 26-FEB 2	1834	AVON NORTH HALF	NO	1COR	NO
MARCH 8-13	1834	NEWARK	NO	NO	NO
MARCH 13-18	1834	SPRING VALLEY	NO	ALL	ALL
MARCH 16-22	1834	BELOIT WEST HALF	FEW	NO	FEW
MARCH 23-28	1834	ROCK WEST HALF	NO	NO	NO
MARCH 31 - APR 4	1834	FULTON WEST HALF	NO	NO	NO

IN CENTER & PORTER TWP ALL THE CLOSURES OF THE WEST BOUNDARY WERE LARGE AND HARRISON SPECIFICALLY STATES SETTING A POST & RAISING A MOUND FOR MANY OF THE CORNERS. THE PLAT ALLS FOR JOGS AT ALL POINTS ALTHOUGH THE FIELD NOTES DO NOT STATE SO. THE PROBLEM IS THE FIELD NOTES, ORIGINAL PLAT, AND FIELD HISTORY ARE NOT ALWAYS IN HARMONY.

THE FOLLOWING RECORDS SHOW THAT THE ORIGINAL SURVEYOR, HARRISON, PLACED N/S JOGS AT THE SECTION CORNERS BETWEEN BELOIT & NEWARK TOWNSHIPS FROM THE SW COR SECTION 31 BELOIT TOWNSHIP TO THE NW CORNER OF SEC 19. THE ORIGINAL GOVERNMENT PLAT CALLS FOR ALL THE CORNERS BETWEEN NEWARK AND BELOIT TOWNSHIPS TO BE COMMON. THE QUESTION WHY DID HARRISON CHANGE HIS FIELD PROCEDURES FOR THE NW COR SEC 18 AND THE NW COR SEC 7. THE CLOSURES WERE GREATER THAN 10.56' AT THE SW COR SEC 30 WHERE HE ESTABLISHED THE CORNER. ALSO WHY DIDN'T THE ORIGINAL PLAT REFLECT HIS JOGS AS THEY DID IN PORTER & CENTER TOWNSHIPS.

521 E-1 NW COR SEC 7 (COMMON)

1834 HARRISON FIELD NOTES WEST BETWEEN SEC 6 & 7
5161.2 INT. WEST BOUNDARY 31.02' SOUTH OF POST MARKED SAME FOR COR TO SEC 6 & 7.

541 J-1 NW COR SEC 18 (COMMON)

1834 HARRISON FIELD NOTES WEST BET 7 & 18
5175.72 INT. WEST BOUNDARY AT NORTH EDGE OF MARSH 61.38' SOUTH OF POST MARKED SAME FOR 7 & 18

554 L-1 W 1/4 COR SEC 18 (JOG)

1878 RUGER VOL 2 PG 260 SEE SURVEY SEC 13 LOCKE. CALLS FOR E 1/4 COR SEC 13 NORTH OF THE W 1/4 COR SEC 18. 2657.16 TO NW & SW CORNERS OF SEC 18. VERIFIED MAP JOG IN ORIGINAL COUNTY SURVEYOR'S VOL 2 PG 260 RECORDS.

561 N-1 NW COR SEC 19 (JOG)

1834 HARRISON FIELD NOTES WEST BET. SECS 18 & 19 RAND.
5197.5 INTERSECTED WEST BOUNDARY 59.4' SOUTH OF POST IN EAST EDGE OF MARSH} SET COR TO SEC 18 & 19 MARKED POST.

1878 RUGER VOL 2 PG 260 SHOWS THE CORNER AS BEING SOUTH OF THE SE COR SEC 13 NEWARK TWP.

574 P-1 W 1/4 COR SEC 19 (JOG)

NOTHING INDICATES A JOG.

581 R-1 SW COR SEC 19 (JOG)

1834 HARRISON FIELD NOTES WEST BE. SECS 19 & 30 RAND.
5208.72 INTERSECTED WEST BOUNDARY 50.16' SOUTH OF POST COR TREES TO 19 & 30 BUR OAK 8 N49E 29' & BUR OAK 9 S70E.

E-1

594 T-1 W 1/4 COR SEC 30 (JOG)
NOT RECORD INDICATING A JOG.

601 V-1 SW COR SEC 30 (JOG)

1834 HARRISON WEST BETWEEN SECTIONS 30 & 31 ON RAND.
5217.3 INTERSECTED WEST BOUNDARY 10.56' SOUTH OF POST &
ESTABLISHED COR TO SEC 30 & 31. BEARINGS BURR OAK 30 N15E
159 & BUR OAK 18 S29E 29

1931 SUNNY VOL 3 PG 189 INCOMPLETE RECORD SEEMS TO INDICATE THAT
SEC LINE OF SEC 30 & 31 BELOIT TWP JOGS 5.10 TO 16 LINKS.
DUG BUT FOUND NOTHING SOUTH OF SE COR SEC 25. AT SE COR SEC
25 FOUND 6X5 CUT STONE MON. OF SEC 25 & 36 NEWARK.

614 X-1 W 1/4 COR SEC 31 (JOG)

1959 BATTERMAN VOL 4 PG 6 SHOWS E 1/4 COR SEC 36 4.49' NORTH OF W
1/4 COR SEC 31. REFERENCED BOTH.

E-1