

U.S. PUBLIC LAND SURVEY MONUMENT RECORD

For Public Land Survey Corners in:

WI ADMINISTRATIVE CODE A-E 7.08 REQUIREMENT

T. 1N., R. 12E 4th P.M.

CORNER CODE INDEX

A	1	2	3	4	5	6	7	8	9	10	11	12	13	14	15	16	17	18	19	20	21	22	23	24	25
B	6						5			4					3					2					1
C							◆																		
D																									
E																									
F	7						8			9					10					11					12
G																									
H																									
I																									
J																									
K	18						17			16					15					14					13
L																									
M																									
N																									
O	19						20			21					22					23					24
P																									
Q																									
R																									
S	30						29			28					27					26					25
T																									
U																									
V																									
W	31						32			33					34					35					36
X																									
Y																									
Z																									

TWP
ROCK COUNTY, WI

IF AVAILABLE
ROCK COUNTY COORDINATES PREFERRED

North 227,797.08 Elev. _____

East 472,416.15

Hor. Datum County Vert. Datum _____

LATITUDE _____ ELLIPS. HT. _____

LONGITUDE _____

ELLIPS. DATUM
NAD83(91) _____ COUNTY _____ LIST _____

GPS (X) _____ TRAVERSE (X) _____

BASED ON THE FOLLOWING CONTROL:

PLACE MONUMENT SYMBOL ◆ AT PROPER LOCATION ON ABOVE INDEX

◆ CORNER MONUMENT

WITNESS MONUMENT

(a) BEARINGS ARE BASED ON:

FIELD BOOK _____ PAGE # _____

SHEET 1 OF 2

SHOW A PLAN VIEW DRAWING DEPICTING THE CORNER MONUMENT AND SURROUNDING PHYSICAL FEATURES, INCLUDING THE EXCAVATION AREA AND DEPTH.

PLANNING & ZONING COMMITTEE ADOPTED THE ABOVE FORM ON 12/2/1982

CORNER CODE E-7

BE524

(B) Describe any record evidence, monument evidence, occupational evidence, testimonial evidence or any other material evidence you considered, and whether the monument was found or placed.

- 1834 HARRISON EAST BETWEEN 5 & 8
2640 TEMPY 1/4P
5297.16 EAST BOUNDARY 11.88' NORTH OF POST
COR WEST
2648.58 QUARTER SEC COR IN RAVINE RUNNING NORTH POST & SET
MOUND
5297.16 SEC COR
- 1864 LOCKE VOL 1 PG 208 FD REMAINS OF OLD STAKE ABOUT ONE FT NE OF BAR
POST. 2629.44 TO CENTER SEC 8 & 5258.88 TO S 1/4 COR SEC 8.
- 1980 BARNES VOL 6 PG 108& 144 SET ALUM MON. 2684.20 TO SW COR SEC 5,
2684.20 TO SE COR SEC 5, 2649.60 TO CENTER SEC 8, ANGLE 180-00-00 AT
S 1/4 COR SEC 5 FROM SW TO SE CORNERS SEC 5, & ANGLE 89-05-33 AT S
1/4 COR SEC 5 FROM SE COR SEC 5 TO CENTER SEC 8.
- 1980 BARNES VOL 6 PG 111 DUG WITH A BACKHOE ON A TRACTOR AND FOUND
NOTHING. SET ALUM MON 18" DEEP ON LINE WITH THE SE & SW CORNERS
OF SECTION 5 AT SINGLE PROPORTIONATE DISTANCE. I USED LOCKE'S
RECORD DISTANCE AND THE MEASURED DISTANCE ALONG THE E/W CENTERLINE
AND ALONG THE SOUTH LINE OF THE SE 1/4 OF SEC 8 TO COMPUTE THE
PRORATION FROM THE S 1/4 COR TO THE N 1/4 COR OF SEC 8. THE
PRORATED DISTANCE IS 5287.69 AND THE MEASURED DISTANCE IS 5284.09.
THE EXCESSIVE DIFFERENCE IN THE MEASURED AND THE ORIGINAL
GOVERNMENT DISTANCE BETWEEN THE SE & SW CORNERS OF SECTION 5 IS IN
HARMONY WITH THE DIFFERENCE IN THE ORIGINAL & MEASURED DISTANCES
BETWEEN THE SW & S 1/4 CORNERS OF SECTION 4 & THE SE & S 1/4
CORNERS OF SECTION 8. IT ALSO SEEMS REASONABLE WHEN ONE CONSIDERS
THE LONG DISTANCE BETWEEN THE EAST 1/4 & WEST 1/4 CORNERS OF
SECTION 8. SHOWS THE MONUMENT 10' NORTH OF THE E/W FENCE & 26'
WEST OF THE N/S FENCE.

FD ALUM. MON .

C) Was the corner restored through acceptance of (1) an obliterated evidence location, or, (2) a found perpetuated location?
ACCEPTED FOUND LOCATION.

D) Describe any material discrepancy between the location of the corner as restored or reestablished and the location of that corner as previously restored or reestablished by distance and direction. Show the discrepancy on the plan view drawing under (a), above. Show the distances between the corner as previously restored or reestablished and (1) the corner as restored or reestablished, and (2) to at least 4 of the witness monuments shown on the drawing in (a), above.

(E) Was the corner reestablished through lost corner proportionate methods? If so, show the method, including the directions and distances to other public land survey corners used as evidence or used for proportioning the corner location.
NO

I, Donald Barnes, hereby certify that the corner points as identified by the corner code index were, in a field survey on, established, re-established, monumented, re-monumented, recovered or restored as expressed below and in conformance with the regulations and rules as required in the current manual of survey instructions of the United States Department of Interior, Bureau of Land Management.

COUNTY SURVEYOR FILING DATA

seal

Donald Barnes
OCT 9, 1998

Date of computer entry _____

Date microfilmed _____

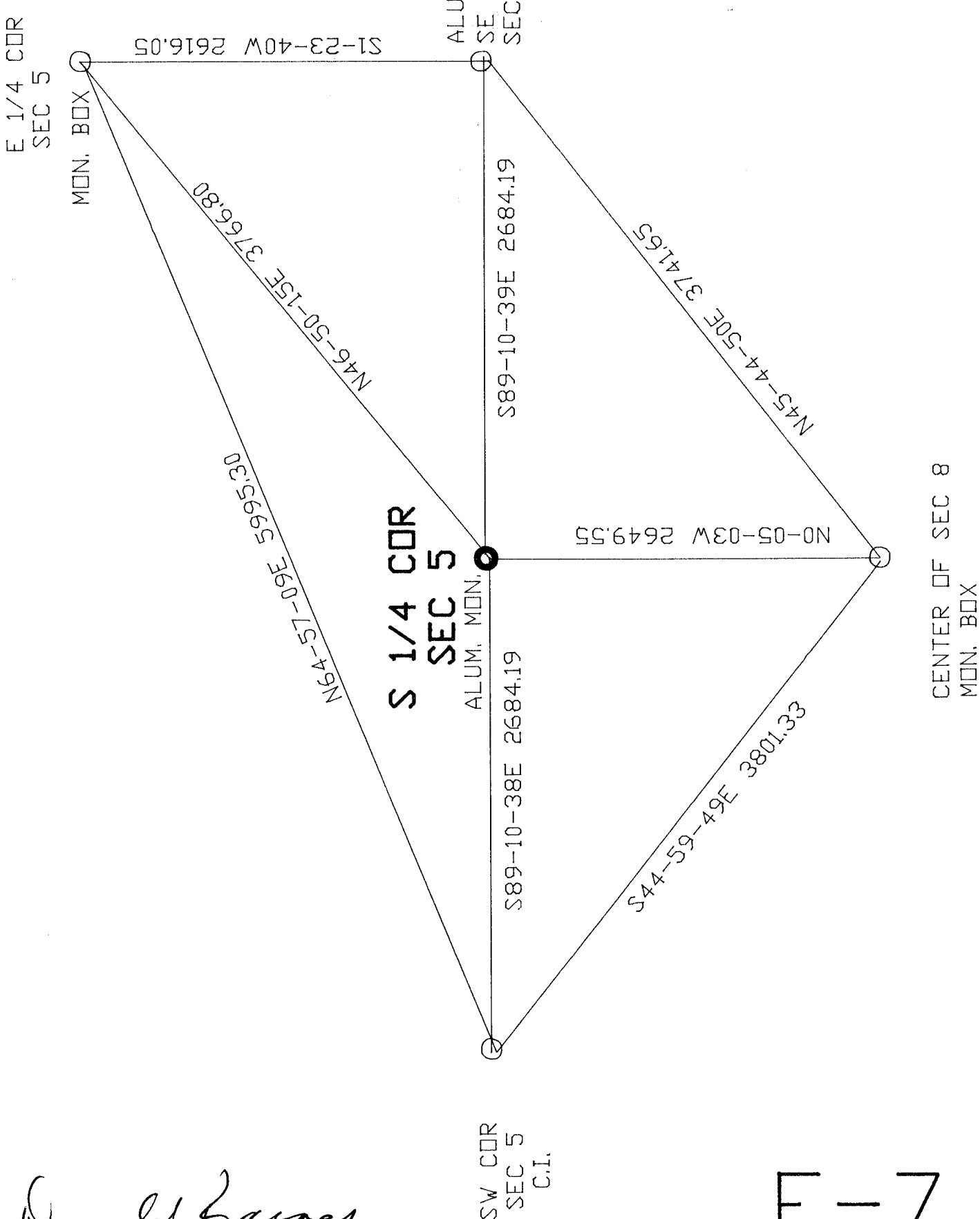
Number of included sheets _____

CORNER CODE

EMBOSS LAND SURVEYOR SEAL

A-E 7.08 REQUIREMENT

E-7



Donald Barnes
Oct 9, 1998

E-7

