

U.S. PUBLIC LAND SURVEY MONUMENT RECORD

For Public Land Survey Corners in the

T. 1 N., R. 13 E.

CORNER CODE INDEX

TURTLE TWP
ROCK COUNTY WI

A	1	2	3	4	5	6	7	8	9	10	11	12	13	14	15	16	17	18	19	20	21	22	23	24	25	26	27	28	29	30	31	32	33	34	35	36					
B																																									
C																																									
D																																									
E																																									
F																																									
G																																									
H																																									
I																																									
J																																									
K																																									
L																																									
M																																									
N																																									
O																																									
P																																									
Q																																									
R																																									
S																																									
T																																									
U																																									
V																																									
W																																									
X																																									
Y																																									
Z																																									

IF AVAILABLE
ROCK COUNTY COORDINATES REFERRED


North 229,870.71 Elev. _____


East 517,421.46

Hor. Datum COUNTY Vert. Datum _____

GPS (X) _____ TRAVERSE (X)

BASED ON THE FOLLOWING CONTROL:

PLACE MONUMENT SYMBOL  AT PROPER LOCATION ON ABOVE INDEX

 CORNER MONUMENT

WITNESS MONUMENT

(a)

BEARINGS ARE BASED ON:

FIELD BOOK _____ PAGE # _____

SHOW A PLAN VIEW DRAWING DEPICTING THE CORNER MONUMENT AND SURROUNDING PHYSICAL FEATURES, INCLUDING THE EXCAVATION AREA AND DEPTH. THE CORNER MONUMENT SHALL HAVE THE FOLLOWING CHARACTERISTICS: 1) HAVE A LEAST TWO PREDETERMINED BREAK-OFF POINTS. 2) IF BROKEN LEAVE A PERMANENTLY MAGNETIZED REMAINT AT THE ORIGINAL POINT. 3) MUST BE EXTENDABLE. 4) THE CAP IS INSCRIBED "ROCK COUNTY SURVEY MONUMENT - PENALTY FOR DISTURBING MARKER" 5) OR AN EXISTING CUT LIMESTONE. AN IRON PIPE 1 1/2" 4" DIAMETER MAY BE USED IN AREAS WHERE GROUND WATER IS WITHIN ONE FOOT OF THE SURFACE. IF THE CORNER IS OCCUPIED BY AN IMPROVEMENT DIAMETERED CABLE, ETC AND DURABLE, DISTINCT MONUMENT MAY BE USED. CORNERS SHALL BE REFERENCED WITH AT LEAST 4 DURABLE WITNESS MONUMENTS. WITNESS MONUMENTS SHALL BE MADE OF CONCRETE, NATURAL STONE, IRON OR OTHER EQUALLY DURABLE MATERIAL EXCEPT WOOD. DESCRIBE THE CORNER AND THE WITNESS MONUMENTS.

PLANNING & ZONING COMMITTEE ADOPTED THE ABOVE FORM ON 12/2/1992
WI ADMINISTRATIVE CODE A-E 7.08 REQUIREMENT

SHEET 1 OF 2

CORNER CODE

017

(B) Describe any record evidence, monument evidence, occupational evidence, testimonial evidence or any other material evidence you considered, and whether the monument was found or placed.

- 1861 RUGER VOL 1 PG 151 LOT OF SMALL LIMESTONES. 2644.3' TO CENTER OF SECTION 2 & 5288.6 TO E 1/4 COR SEC 2.
- 1861 RUGER VOL 1 PG 152 2680.92 TO CENTER OF SEC 3 & 5361.84 TO W 1/4 CORNER OF SECTION 3.
- 19?? SURVEYOR 2680.25 TO SE CORNER OF SECTION 3, 2933.5 TO NE CORNER OF SECTION 3, ANGLE AT E 1/4 CORNER OF SECTION 3 FROM THE E/W 1/4 LINE TO THE NE CORNER OF SECTION 3 IS 88-11, & THE ANGLE AT THE E 1/4 CORNER OF SECTION 3 FROM THE SE CORNER TO E/W 1/4 LINE OF SECTION 3 IS 90-3(?) -30.
- 1948 SHIMEALL FOUND PIN. NORTHERLY 2335.5' FROM SE CORNER OF SECTION 3 TO IRON PIPE AT CENTER OF PAVEMENT.
- 1956 SHIMEALL PLAT OF SURVEY. FOUND PIN. EASTERLY 471.70' TO AN IRON PIPE.
- 1964 SHIMEALL CSM VOL 1 PG 100 FOUND PIN. 2178.1' TO PIPE AT CTH J & CREEK RD. ANGLE OF 70-51 FROM THE E 1/4 CORNER OF SECTION 3 TO PIPES ALONG CTH J.
- 1964 SHIMEALL PLAT OF SURVEY NORTHERLY 2335.5 FROM SE CORNER OF SECTION 3 TO PIPE AT CENTER OF PAVEMENT. 2933.5 TO NW CORNER OF SECTION 2.
- 1971 SHIMEALL CSM VOL 2 PG 192 FOUND PIN. 7.1 SOUTHWESTERLY TO PIPE, 8.0 SOUTHERLY TO PIPE, & ANGLE 88-24-33 AT E 1/4 CORNER OF SEC 3 FROM EAST LINE OF SE 1/4 OF SECTION 3 TO SERIES OF PROPERTY CORNERS.
- 1971 SHIMEALL MAP #6961 FOUND PIN ANGLE 89-33-30 FROM E/W LINE OF SECTION 2 TO WEST LINE OF SW 1/4 OF SECTION 2. SOUTHERLY 344.75' TO PIPE AT CENTER OF PAVEMENT.
- 1977 COMBS CSM VOL 7 PG 38 FOUND PIN.
- 1978 COMBS CSM VOL 8 PG 4. ANGLE OF 89-31 AT W 1/4 CORNER OF SECTION 2 FROM E/W CENTER LINE TO WEST LINE OF SW 1/4 OF SECTION 2. 795.65 EASTERLY TO PIPE AT CENTER OF PAVEMENT.
- 1982 LEE MAP #4616 FOUND PIN. SOUTHERLY 344.75' TO PIPE AT CENTER OF PAVEMENT.
- 1983 LEUENBERGER CSM VOL 11 PG 378 FOUND PIN. SOUTHWESTERLY 7.10 TO AN IRON PIPE, NORTHEASTERLY 180.37 TO AN IRON PIPE.
- 1986 COMBS CSM VOL 12 PG 473 FOUND PIN. 344.75' TO PIPE AT CENTER OF PVMT TO THE SOUTH.
- 1989 COMBS CSM VOL 14 PG 102 FOUND PIN 2680.25 TO SW CORNER OF SEC 2 & SOUTHERLY 344.75 TO PIPE IN THE CENTER OF THE ROAD.
- 1992 COMBS CSM VOL 15 PG 505 2628.34' TO SE CORNER OF SEC 3.

FOUND PIN SURROUNDED BY BRICKS & REPLACED WITH ALUM. MON.

C) Was the corner restored through acceptance of (1) an obliterated evidence location, or, (2) a found perpetuated location?
ACCEPTED FOUND PERPETUATED LOCATION.

I, Donald Barnes, hereby certify that the corner points as identified by the corner code index were, in a field survey on, November, 1994, established, re-established, monumented, re-monumented, recovered or restored as expressed below and in conformance with the regulations and rules as required in the current manual of survey instructions of the United States Department of Interior, Bureau of Land Management.

Donald Barnes
seal

6/2/95

COUNTY SURVEYOR FILING DATA

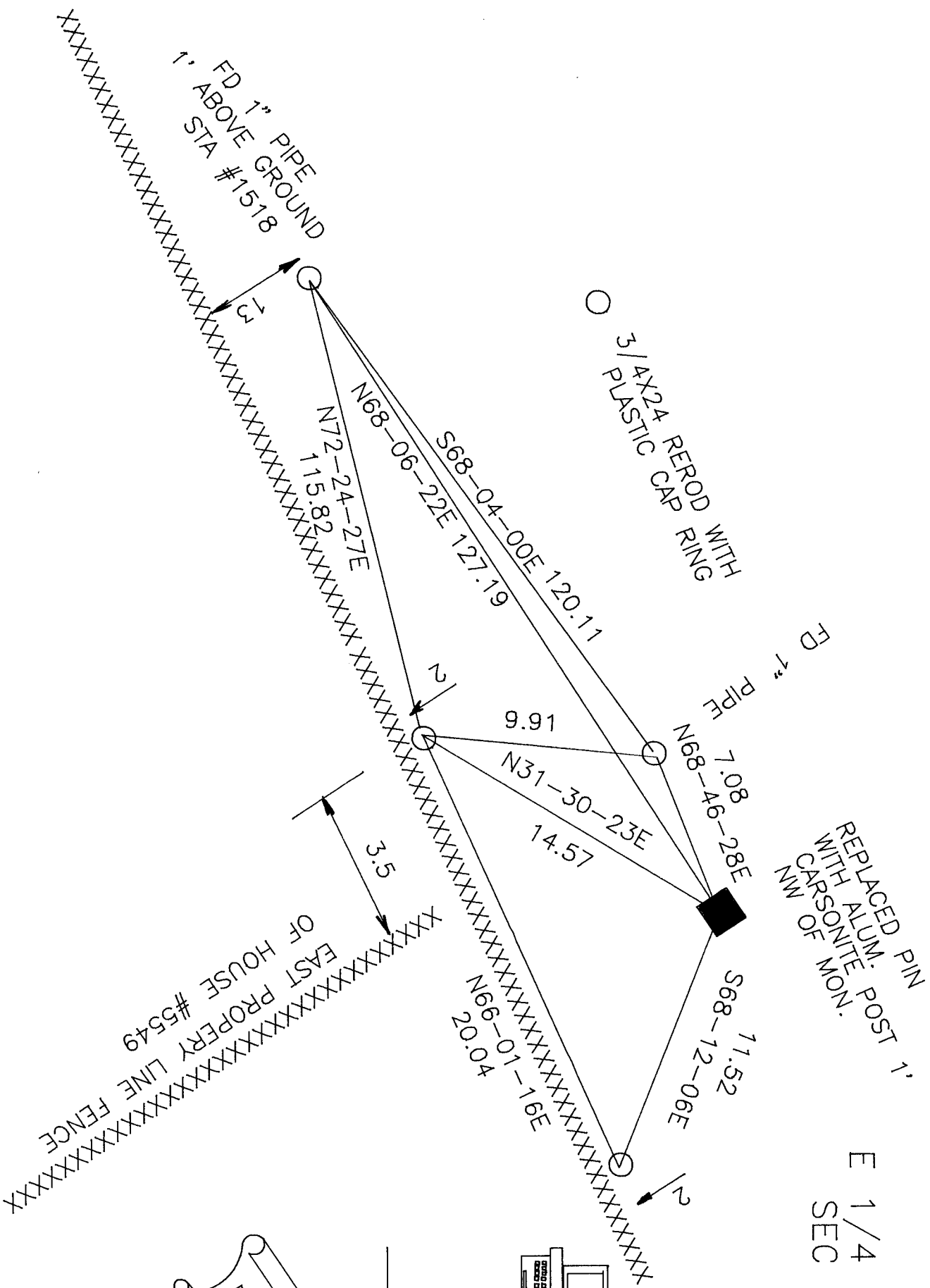
Date of computer entry _____

Date microfilmed _____

Number of included sheets _____
CORNER CODE

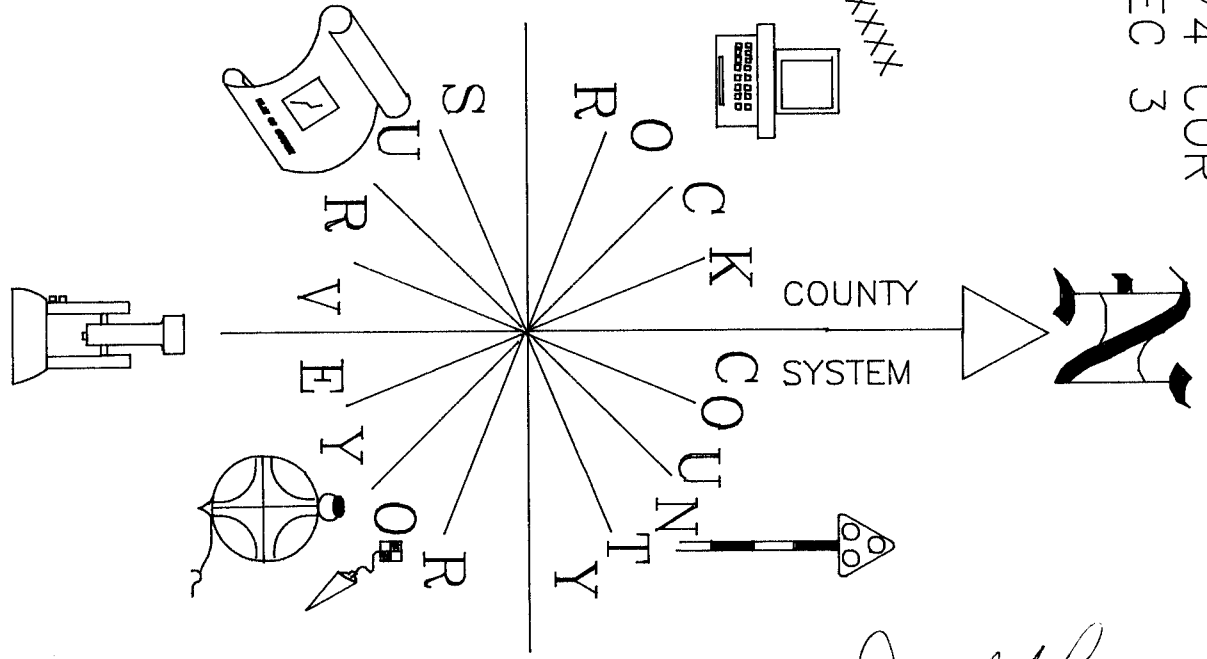
AFFIX YOUR LAND SURVEYOR SEAL

17



REPLACED PIN
WITH ALUM. POST 1'
W/ CARBONITE MON.

E 1/4 COR
SEC 3



Donald Barnes
6/12/95