

U.S. PUBLIC LAND SURVEY MONUMENT RECORD

For Public Land Survey Corners in the

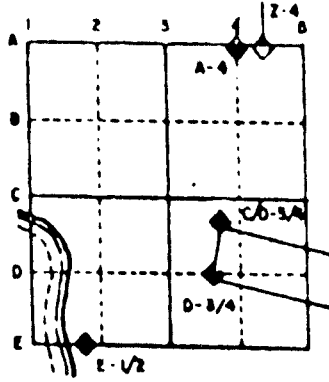
T. 2 N., R. 13 E.

CORNER CODE INDEX

	1	2	3	4	5	6	7	8	9	10	11	12	13	14	15	16	17	18	19	20	21	22	23	24	25
A																									
B																									
C																									
D																									
E																									
F																									
G																									
H																									
I																									
J																									
K																									
L																									
M																									
N																									
O																									
P																									
Q																									
R																									
S																									
T																									
U																									
V																									
W																									
X																									
Y																									
Z																									

PLACE MONUMENT SYMBOL (◆) AT PROPER LOCATION ON ABOVE INDEX

EXAMPLE



TURTLE TWP
ROCK COUNTY WI

IF AVAILABLE
STATE PLANE COORDINATES

North (Y) _____ Eleve. (Z) _____
 East (X) _____ Zone _____
 Hor. Datum _____ Vert. Datum _____

◆ CORNER MONUMENT

○ WITNESS MONUMENT

BEARINGS ARE BASED ON:

(B) Describe any record evidence, monument evidence, occupational evidence, testimonial evidence or any other material evidence you considered, and whether the monument was found or placed.

1853 MC VEAN VOL 1 PG 19 SET HH
1947 BATTERMAN MAP #4640 FOUND PIPE.
1948 BATTERMAN MAP #4641 FOUND PIPE
1963 SHIMEALL MAP #4650 FOUND PIPE
1964 BATTERMAN VOL 4 PG 202 FOUND PIPE
1966 SHIMEALL MAP #12739 FOUND PIPE
1968 SHIMEALL MAP #12740 FOUND PIPE
1977 KIENBAUM CSM VOL 6 PG 193 FOUND PIPE.

DUG AND FOUND NOTHING. COMPUTED POSITION IS AT THE EAST END OF A N/S FENCE. DID NOT PLACE ANYTHING.

C) Was the corner restored through acceptance of (1) an obliterated evidence location, or, (2) a found perpetuated location?

ESTABLISHED POSITION THROUGH ACCEPTANCE OF OBLITERATED EVIDENCE LOCATION. COMPUTED POSITION ON LINE WITH FOUND PIPE AND ANGLE IRON AT RECORD DISTANCE (33.00') FROM FOUND PIPE. THIS WAS IN HARMONY WITH OTHER FOUND PIPES.

D) Describe any material discrepancy between the location of the corner as restored or reestablished and the location of that corner as previously restored or reestablished by distance and direction. Show the discrepancy on the plan view drawing under (a), above. Show the distances between the corner as previously restored or reestablished and (1) the corner as restored or reestablished, and (2) to at least 4 of the witness monuments shown on the drawing in (a), above.

(E) Was the corner reestablished through lost corner proportionate methods? If so, show the method, including the directions and distances to other public land survey corners used as evidence or used for proportioning the corner location.

NO

I, Donald Barnes, hereby certify that the corner points as identified by the corner code index were, in a field survey on, May 16, 1994, established, re-established, monumented, re-monumented, recovered or restored as expressed below and in conformance with the regulations and rules as required in the current manual of survey instructions of the United States Department of Interior, Bureau of Land Management.

Donald Barnes
July 6, 1994

AFFIX YOUR LAND SURVEYOR SEAL

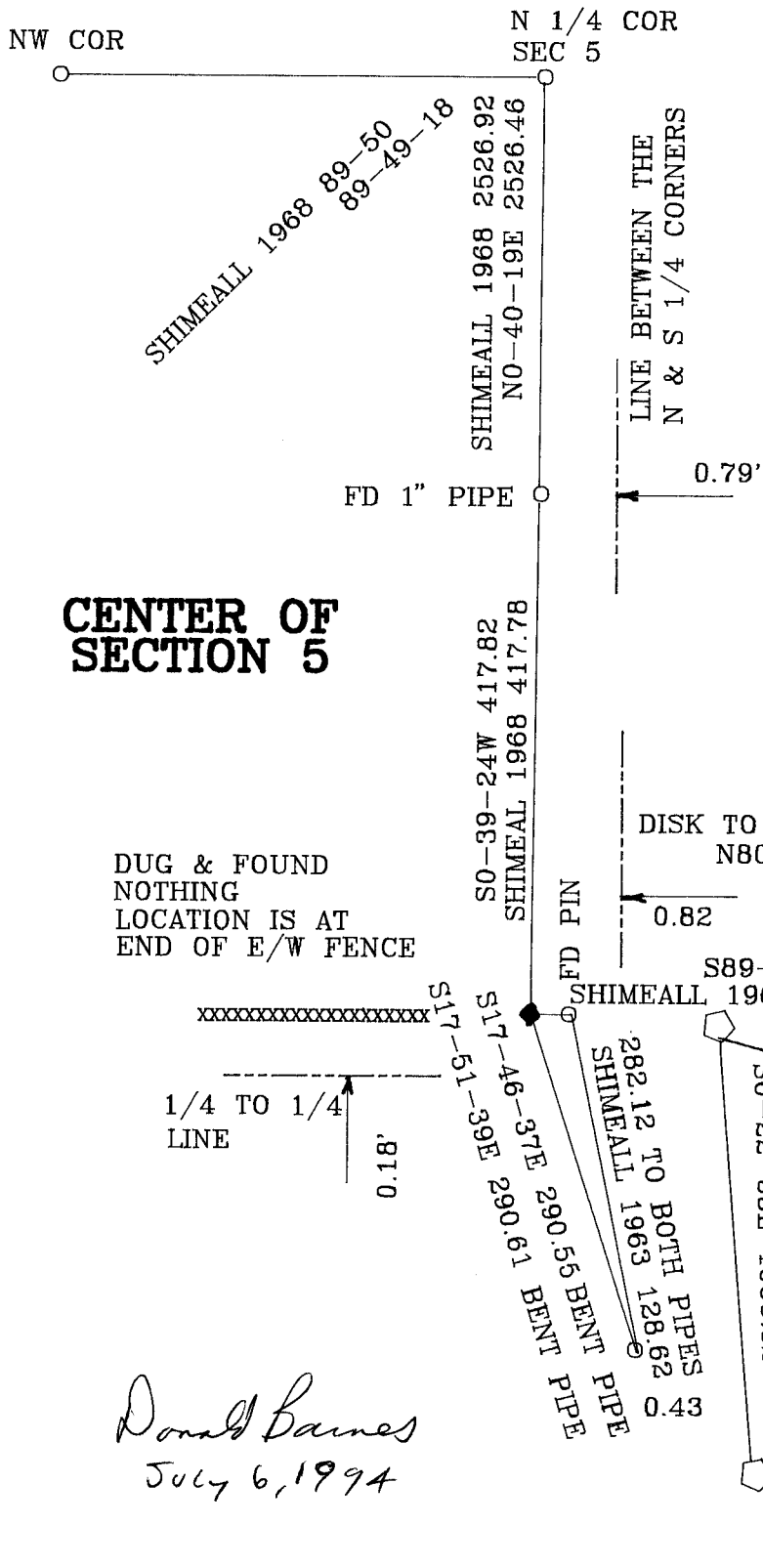
COUNTY SURVEYOR FILING DATA

Date of computer entry _____

Date microfilmed _____

Number of included sheets _____
CORNER CODE

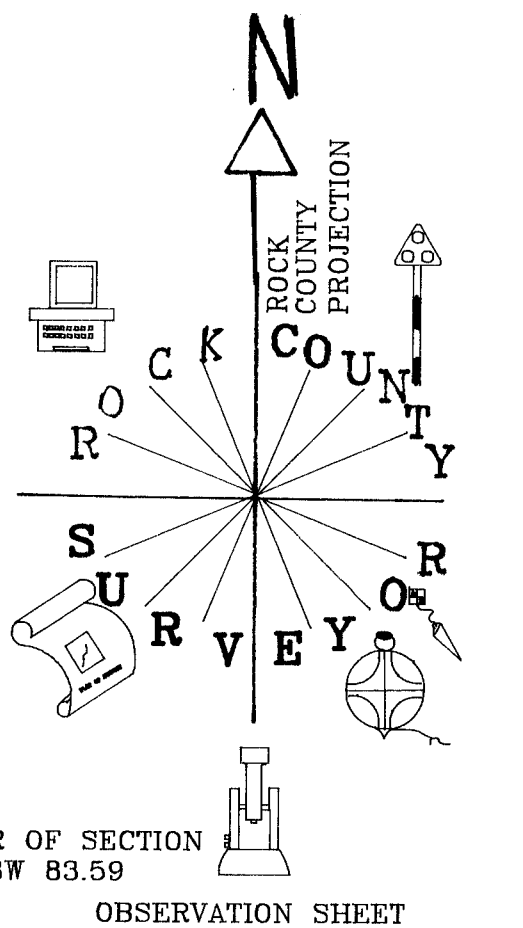
2 OF 3



CENTER OF SECTION 5

DUG & FOUND
NOTHING
LOCATION IS AT
END OF E/W FENCE

Donald Barnes
July 6, 1994



Donald Barnes
July 6, 1994

BEARINGS & DISTANCES ARE BASED ON
DATA COMPILED FROM TURTLE TWP PROJECT.

LOCKE 1865 2432.10
COMBS 1994 2427.16
S89-38-25E 2427.40
R. COMBS 1994 2359.72
N89-00-15E 2359.91
LOCKE 1865 2366.30
HOLMES 1882 2367.42
COMBS FD
COMBS PIPE
S1-02-36W 2660.37
LOCKE 1865 2638.81
R. COMBS 1994 2651.06
N89-08-50E 2651.06
HOLMES 1882 2644.62
LOCKE 1865 2629.88
S0-46-12W 2672.86
HOLMES 1882 2637.36
FD PIPE
R. COMBS 1994 2651.06
N89-04-47E 5010.96
HOLMES 1882 5012.04
LOCKE 1865 4996.19
COMBS 1994 5010.96
S0-50-13W 2957.40
LOCKE 1865 3016.20
COMBS 1994 3029.55
S1-05-38W 3029.55
R. COMBS 1994 3085.27
LOCKE 1865 3087.48
S0-11-06E 3085.27
COMBS 1994 3085.35

LOCKE 1865 2640.00
S89-17-41E 2636.32
SHIMEALL 1968 2951.28
MC VEAN 1853 2932.38
SHIMEALL 1932 1948
RHB 89-35
IRON
FD ANGLE
S89-47-35E 1327.62
S89-47-35E 1320.94
S89-47-23E 1320.9
SHIMEALL 1968 SHIMEALL 1968
MC VEAN 1853 2634.72
S89-47-29E 2648.56

SHIMEALL 1319.70
SHIMEALL 1932 89-35
RHB 1948
IRON
FD ANGLE
S89-47-35E 1327.62
S89-47-35E 1320.94
S89-47-23E 1320.9
SHIMEALL 1968 SHIMEALL 1968
MC VEAN 1853 2634.72
S89-47-29E 2648.56

BATTERMAN 1964 2639.19
S89-09-20E 2639.85
MC VEAN 1853 2865.06
S0-40-11W 2944.28
NO-39-14E 5591.95
MC VEAN 1853 5497.8
S89-47-01E 2646.40
S89-47-15E 5294.97
MC VEAN 1853 5289.90

LOCKE 1865 2645.90
S0-36-22W 2642.90
LOCKE 1865 2634.28

NW COR

N 1/4 COR

S 1/4 COR

E 1/4 COR

SE COR

SW COR

