

# U.S. PUBLIC LAND SURVEY MONUMENT RECORD

For Public Land Survey Corners in:

WI ADMINISTRATIVE CODE A-E 7.08 REQUIREMENT

T. 1N., R. 12E

CORNER CODE INDEX

A	1	2	3	4	5	6	7	8	9	10	11	12	13	14	15	16	17	18	19	20	21	22	23	24	25
B	6																								
C		5																							
D																									
E																									
F	1																								
G		8																							
H			9																						
I				10																					
J					11																				
K						12																			
L	18						15																		
M		17						16																	
N									15																
O										14															
P											13														
Q	19																								
R		20																							
S			21																						
T				22																					
U					23																				
V						24																			
W							25																		
X								26																	
Y									27																
Z										28															
											29														
												30													
													31												
														32											
															33										
																34									
																	35								
																		36							

PLACE MONUMENT SYMBOL  AT PROPER LOCATION ON ABOVE INDEX

BELoit TWP  
ROCK COUNTY WI

IF AVAILABLE  
ROCK COUNTY COORDINATES PREFERRED

North 230,253.99 Elev. \_\_\_\_\_

East 485,845.87

Hor. Datum COUNTY Vert. Datum \_\_\_\_\_

LATITUDE \_\_\_\_\_ ELLIPS. HT. \_\_\_\_\_

LONGITUDE \_\_\_\_\_

GPS (X) \_\_\_\_\_ TRAVERSE (X) \_\_\_\_\_

BASED ON THE FOLLOWING CONTROL:

CORNER MONUMENT

WITNESS MONUMENT

(a)

BEARINGS ARE BASED ON:

FIELD BOOK \_\_\_\_\_ PAGE # \_\_\_\_\_

SHEET 1 OF 2

SHOW A PLAN VIEW DRAWING DEPICTING THE CORNER MONUMENT AND SURROUNDING PHYSICAL FEATURES, INCLUDING THE EXCAVATION AREA AND DEPTH.

PLANNING & ZONING COMMITTEE ADOPTED THE ABOVE FORM ON 12/2/1982

CORNER CODE C-17

# U.S. PUBLIC LAND SURVEY MONUMENT RECORD

For Public Land Survey Corners in:

WI ADMINISTRATIVE CODE A-E 7.08 REQUIREMENT

T. 1 N., R. 12 E

CORNER CODE INDEX

A	1	2	3	4	5	6	7	8	9	10	11	12	13	14	15	16	17	18	19	20	21	22	23	24	25
B																									
C	6																								
D																									
E																									
F	1	8	9	10	11	12																			
G																									
H																									
I																									
J																									
K	18	17	16	15	14	13																			
L																									
M																									
N																									
O	19	20	21	22	23	24																			
P																									
Q																									
R																									
S																									
T	30	29	28	27	26	25																			
U																									
V																									
W																									
X	31	32	33	34	35	36																			
Y																									
Z																									

BELoit TWP  
ROCK COUNTY WI

IF AVAILABLE  
ROCK COUNTY COORDINATES PREFERRED

North \_\_\_\_\_ Elev. \_\_\_\_\_

East \_\_\_\_\_

Hor. Datum \_\_\_\_\_ Vert. Datum \_\_\_\_\_

LATITUDE \_\_\_\_\_ ELLIPS. HT. \_\_\_\_\_

LONGITUDE \_\_\_\_\_

GPS (X) \_\_\_\_\_ TRAVERSE (X) \_\_\_\_\_

BASED ON THE FOLLOWING CONTROL:

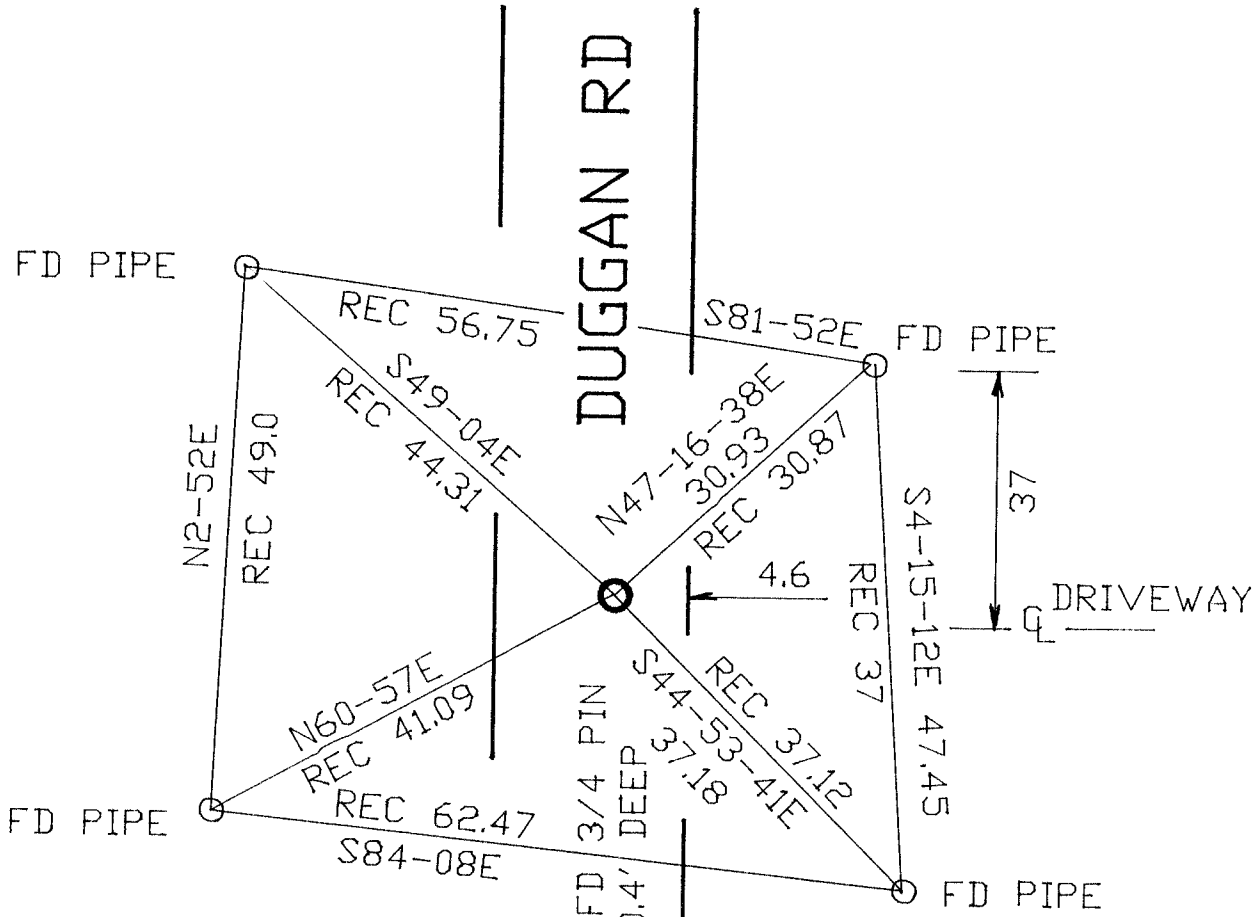
PLACE MONUMENT SYMBOL  $\blacklozenge$  AT PROPER LOCATION ON ABOVE INDEX

$\blacklozenge$  CORNER MONUMENT

$\circ$  WITNESS MONUMENT

(a)

BEARINGS ARE BASED ON: COUNTY



OBSERVATION SHEET #518  
VOL 4 PG 462

FIELD BOOK \_\_\_\_\_ PAGE # \_\_\_\_\_

SHEET 2 OF 2

SHOW A PLAN VIEW DRAWING DEPICTING THE CORNER MONUMENT AND SURROUNDING PHYSICAL FEATURES, INCLUDING THE EXCAVATION AREA AND DEPTH.

PLANNING & ZONING COMMITTEE ADOPTED THE ABOVE FORM ON 12/2/1982

CORNER CODE C-17

be 518

(B) Describe any record evidence, monument evidence, occupational evidence, testimonial evidence or any other material evidence you considered, and whether the monument was found or placed.

1834 HARRISON NORTH BETWEEN SECS 2 & 3

2640 QUARTER SEC. CORNER SET POST & RAISED MOUND  
5592.18 INT NORTH BOUNDARY AT POST MARKED POST IN MOUND

1858 CHURCH VOL 1 PG 81 STAKE MARKED NO BEARING. CALLS FOR 2692.8 TO CENTER SEC 3, 5385.60 TO W 1/4 COR SEC 3, & 2964.72 TO NE COR SEC 3.

1860 RUGER VOL 1 PG 129 SET LIMESTONE 20X9X4 CALLS FOR 2641.98 TO CENTER SEC 2, 5283.96 TO E 1/4 COR SEC 2 VAR 6-25, & 2692.74 TO NW COR SEC 2.

1874 RUGER VOL 2 PG 143 FOUND LINE & OLD STAKE. DROVE NEW STAKE IN PLACE OF OLD ONE & PUT ON TOP OF IT LS 17X8X2 1/2. ALSO SET L.S. 39.6' WEST FROM THE CORNER. IT IS 28.55' TO THE FENCE ON EAST SIDE OF ROAD & 37.29' TO FENCE ON WEST SIDE OF ROAD. THE CORNER IS NEARLY IN LINE OF FENCE RUNNING WEST. 2977.26 VAR 4-45 TO NE COR SEC 3, 2660.13 VAR 4-35 TO SE COR SEC 3, 2684.22 TO CENTER SEC 3, & 5403.75 TO W 1/4 COR SEC 3.

1919 BATTERMAN VOL 3 PG 76 SET IRON MONUMENT 1/2X1"X36". 2664.4 TO SE COR SEC 3, 2687.6 TO CENTER SEC 3 (AT CENTER FOUND L.S. SET BY RUGER), ANGLE OF 89-10 AT E 1/4 COR SEC 3 FROM SE COR SEC 3 TO CENTER SEC 3, & FOUND L.S. SET 33' WEST.

1948 BATTERMAN #152 PIN CENTER OF PAVEMENT. PIN 26.00 TO THE SOUTH & 159.37 TO THE EAST. EASTERLY PIN IS ON WEST SIDE OF R/R.

1969 BATTERMAN VOL 4 PG 462 FOUND IRON PIN IN EAST LANE OF DUGAN RD & SET TIES.

FOUND 3/4" PIN 0.1' DEEP & 4.6' WEST OF EAST EDGE PAVEMENT

C) Was the corner restored through acceptance of (1) an obliterated evidence location, or, (2) a found perpetuated location?

ACCEPTED FOUND PERPETUATED LOCATION

D) Describe any material discrepancy between the location of the corner as restored or reestablished and the location of that corner as previously restored or reestablished by distance and direction. Show the discrepancy on the plan view drawing under (a), above. Show the distances between the corner as previously restored or reestablished and (1) the corner as restored or reestablished, and (2) to at least 4 of the witness monuments shown on the drawing in (a), above.

(E) Was the corner reestablished through lost corner proportionate methods? If so, show the method, including the directions and distances to other public land survey corners used as evidence or used for proportioning the corner location.

NO

I, Donald Barnes, hereby certify that the corner points as identified by the corner code index were, in a field survey on, SEPTEMBER 1997, established, re-established, monumented, re-monumented, recovered or restored as expressed below and in conformance with the regulations and rules as required in the current manual of survey instructions of the United States Department of Interior, Bureau of Land Management.

*Donald Barnes*  
Feb 19, 1998

COUNTY SURVEYOR FILING DATA

Date of computer entry \_\_\_\_\_

Date microfilmed \_\_\_\_\_

Number of included sheets \_\_\_\_\_

CORNER CODE

EMBOSS LAND SURVEYOR SEAL

A-E 7.08 REQUIREMENT

C-17