

# U.S. PUBLIC LAND SURVEY MONUMENT RECORD

For Public and Survey Corners in the

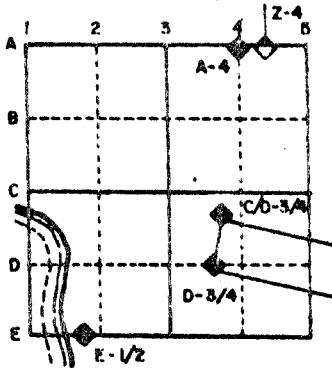
T.    N., R.    E.

## CORNER CODE INDEX

	1	2	3	4	5	6	7	8	9	10	11	12	13	14	15	16	17	18	19	20	21	22	23	24	25
A							◆																		
B																									
C		6					5																		
D																									
E																									
F																									
G																									
H		7					8																		
J																									
K																									
L																									
M		18					17																		
N																									
O																									
P																									
Q		19					20																		
R																									
S																									
T																									
U		30					29																		
V																									
W																									
X																									
Y		31					32																		
Z																									

PLACE MONUMENT SYMBOL (◆) AT PROPER LOCATION ON ABOVE INDEX

### EXAMPLE



\_\_\_\_\_ TWP  
ROCK COUNTY WI

IF AVAILABLE  
STATE PLANE COORDINATES

North (Y) \_\_\_\_\_ Eleve. (Z) \_\_\_\_\_  
 East (X) \_\_\_\_\_ Zone \_\_\_\_\_  
 Hor. Datum \_\_\_\_\_ Vert. Datum \_\_\_\_\_

e.)

◆ CORNER MONUMENT

○ WITNESS MONUMENT

BEARINGS ARE BASED ON:

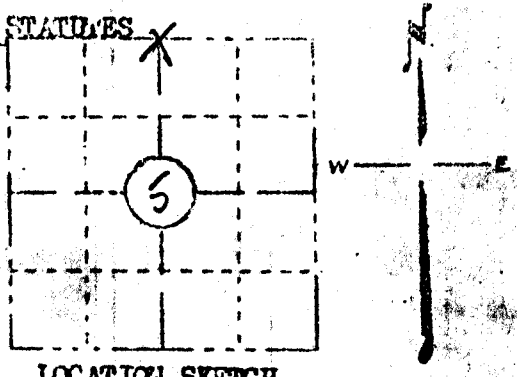
SHEET \_\_\_ OF \_\_\_

CORNER CODE :

PRESERVATION OF LANDMARKS

SECTION 59.635(7) WISCONSIN STATUTES

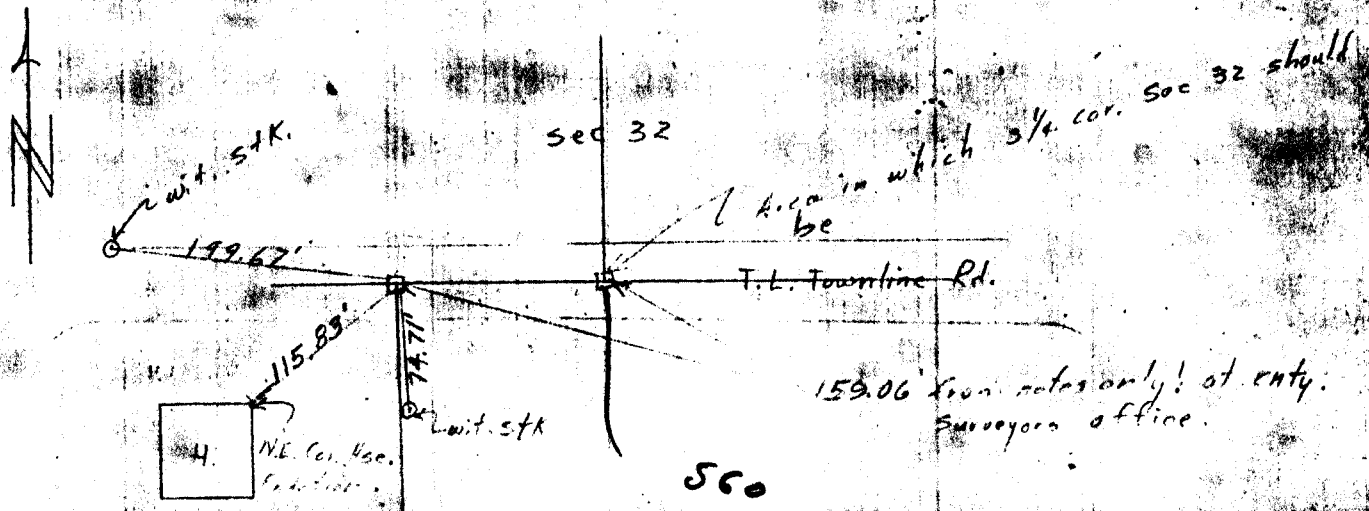
COUNTY Rock  
 TOWN Turtle  
 HIGHWAY T.L. Townline Rd.  
 SECTION NO. N 1/2 Sec 5  
 T. 1 N., R. 13 E.  
 TYPE OF LANDMARK \_\_\_\_\_



LOCATION INDICATED ON SKETCH X

LOCATION SKETCH

Dug hole 4' in dia. x 2' deep @ N 1/2 cor Sec 5. Fd. 6x6 limestone after extensive field search.



**MAY 6  
1985 DAB**

This space for copy of field notes or ties to the above described landmark

Field notes or records filed in book no. Notes pp 11  
 of the \_\_\_\_\_ office.  
 City of Janesville, Rock County.  
 Located or established by T.H. Richard 7-15-58, 19\_\_\_\_  
 Title \_\_\_\_\_

County Clerk's Office \_\_\_\_\_ County, Wis.)  
 Received for record \_\_\_\_\_

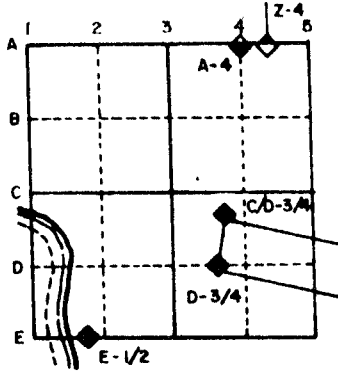
# U.S. PUBLIC LAND SURVEY MONUMENT RECORD

For Public Land Survey Corners in the  
 T. 1 N., R. 13 E.  
**CORNER CODE INDEX**

	1	2	3	4	5	6	7	8	9	10	11	12	13	14	15	16	17	18	19	20	21	22	23	24	25
A							◆																		
B																									
C																									
D																									
E																									
F																									
G																									
H																									
J																									
K																									
L																									
M																									
N																									
O																									
P																									
Q																									
R																									
S																									
T																									
U																									
V																									
W																									
X																									
Y																									
Z																									

PLACE MONUMENT SYMBOL (◆) AT PROPER LOCATION ON ABOVE INDEX

**EXAMPLE**

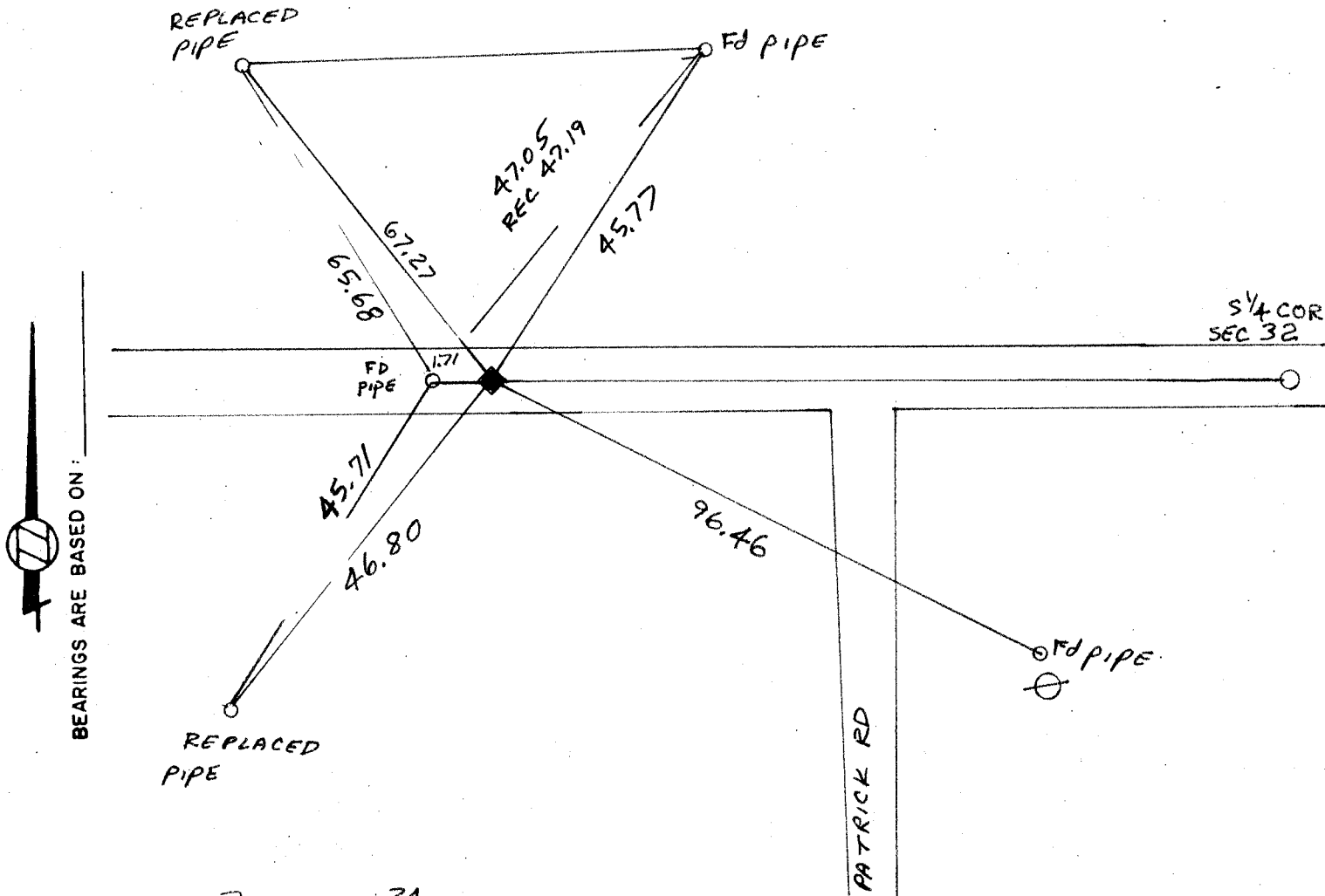


TURTLE TWP  
ROCK COUNTY WI

IF AVAILABLE  
 STATE PLANE COORDINATES

North (Y) \_\_\_\_\_ Eleve. (Z) \_\_\_\_\_  
 East (X) \_\_\_\_\_ Zone \_\_\_\_\_  
 Hor. Datum \_\_\_\_\_ Vert. Datum \_\_\_\_\_

(a) **◆ CORNER MONUMENT** **○ WITNESS MONUMENT**  
*Poly Monument*



FIELD BOOK 3 PAGE # 34  
2 PAGE # 36

SHOW A PLAN VIEW DRAWING DEPICTING THE CORNER MONUMENT AND SURROUNDING PHYSICAL FEATURES, INCLUDING THE EXCAVATION AREA AND DEPTH. THE CORNER MONUMENT SHALL HAVE THE FOLLOWING CHARACTERISTICS: 1) HAVE AT LEAST TWO PREDETERMINED BREAK-OFF POINTS. 2) IF BROKEN, LEAVE A PERMANENTLY MAGNETIZED REMNANT AT THE ORIGINAL POINT. 3) MUST BE EXTENDABLE. 4) THE CAP IS INSCRIBED: ROCK COUNTY SURVEY MONUMENT - PENALTY FOR DISTURBING MARKER. 5) OR AN EXISTING CUT LIMESTONE. AN IRON PIPE 1 1/2" x 4'0" (MINIMUM) MAY BE USED IN AREAS WHERE GROUND WATER IS WITHIN ONE FOOT OF THE SURFACE. IF THE CORNER IS OCCUPIED BY AN IMPROVEMENT (MANHOLE, BURIED CABLE, ETC.) ANY DURABLE, DISTINCT MONUMENT MAY BE USED. CORNERS SHALL BE REFERENCED WITH AT LEAST 4 DURABLE WITNESS MONUMENTS. WITNESS MONUMENTS SHALL BE MADE OF CONCRETE, NATURAL STONE, IRON OR OTHER EQUALLY DURABLE MATERIAL, EXCEPT WOOD. DESCRIBE THE CORNER AND THE WITNESS MONUMENTS.

**CORNER CODE:**  
A 7

(b.) Describe any record evidence, monument evidence, occupational evidence, testimonial evidence or any other material evidence you considered, and whether the monument was found or placed.

PLACED POLY MONUMENT ON LINE WITH THE S1/4 CORNER & SW CORNER OF SECTION 32 LA PRAIRIE TOWNSHIP MID WAY BETWEEN THE NW AND NE CORNERS OF SECTION 5. MONUMENT IS 1 1/2' NORTH OF THE CENTER OF THE PAVEMENT.

IN 1958 THE WI DEPARTMENT OF TRANSPORTATION DUG AND FOUND A 6"X6" LIMESTONE.

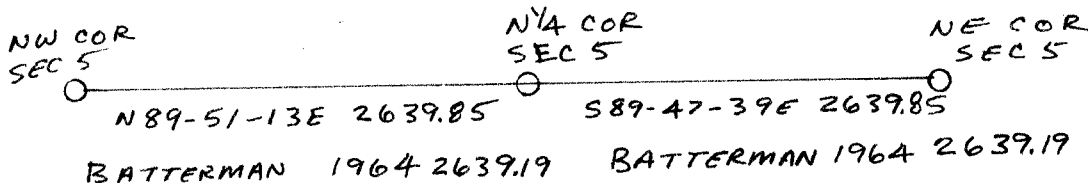
(c.) Was the corner restored through acceptance of (1) an obliterated evidence location, or, (2) a found perpetuated location?

(d.) Describe any material discrepancy between the location of the corner as restored or reestablished and the location of that corner as previously restored or reestablished by distance and direction. Show the discrepancy on the plan view drawing under (a), above. Show the distances between the corner as previously restored or reestablished and (1) the corner as restored or reestablished, and (2) to at least 4 of the witness monuments shown on the drawing in (a), above.

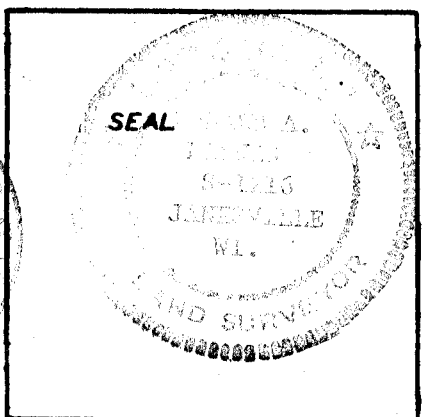
THE MONUMENT I PLACED IS 1.71' EAST OF THE IRON PIPE THAT BATTERMAN PLACED IN 1964. THE RECORD DISTANCES TO THE NE & NW CORNERS OF SECTION 5 INDICATES THAT HE INTENDED TO PLACE IT MIDWAY. SINCE THE NE & NW CORNERS OF SECTION 5 WERE MOVED I DID NOT ACCEPT THE IRON PIPE.

USING THE WI DOT TIE TO THE HOUSE, THE CORNER WOULD BE SOUTH OF EITHER THE PIPE THAT BATTERMAN PLACED OR THE MONUMENT I PLACED.

(e.) Was the corner reestablished through lost corner proportionate methods? If so, show the method, including the directions and distances to other public land survey corners used as evidence or used for proportioning in determining the corner location.



I, Donald Barnes, hereby certify that the corner points as identified by the corner code index were, in a field survey on April 28 1986 established, re-established, monumented, re-monumented, recovered or restored as expressed below and in conformance with the regulations and rules as required in the current manual of survey instructions of the United States Department of Interior, Bureau of Land Management.



COUNTY SURVEYOR FILING DATA  
Date of Computer Entry \_\_\_\_\_  
Date Received \_\_\_\_\_  
Date Microfilmed \_\_\_\_\_  
Treasurer's Receipt No. \_\_\_\_\_  
Number of Included Sheets \_\_\_\_\_

AFFIX YOUR LAND SURVEYOR SEAL. CORNER CODE A7