

# U.S. PUBLIC LAND SURVEY MONUMENT RECORD

For Public Land Survey Corners in:

WI ADMINISTRATIVE CODE A-E 7.08 REQUIREMENT

T. 1 N., R. 12 E 4th P.M.

CORNER CODE INDEX

A	1	2	3	4	5	6	7	8	9	10	11	12	13	14	15	16	17	18	19	20	21	22	23	24	25
B	6																								
C																									
D																									
E																									
F																									
G	7	8	9	10	11	12																			
H																									
I																									
J																									
K	18	17	16	15	14	13																			
L																									
M																									
N																									
O	19	20	21	22	23	24																			
P																									
Q																									
R																									
S	30	29	28	27	26	25																			
T																									
U																									
V																									
W																									
X																									
Y	31	32	33	34	35	36																			
Z																									

TWP  
**ROCK COUNTY, WI**

IF AVAILABLE  
ROCK COUNTY COORDINATES PREFERRED

North 233,234.22 Elev. \_\_\_\_\_

East 485,917.78

Hor. Datum COUNTY Vert. Datum \_\_\_\_\_


LATITUDE \_\_\_\_\_ ELLIPS. HT. \_\_\_\_\_

LONGITUDE \_\_\_\_\_

ELLIPS. DATUM  
NAD83(91) \_\_\_\_\_ COUNTY \_\_\_\_\_ LIST \_\_\_\_\_

GPS (X) \_\_\_\_\_ TRAVERSE (X) \_\_\_\_\_

BASED ON THE FOLLOWING CONTROL:

PLACE MONUMENT SYMBOL  AT PROPER LOCATION ON ABOVE INDEX

 CORNER MONUMENT

WITNESS MONUMENT

(a)

BEARINGS ARE BASED ON:

FIELD BOOK \_\_\_\_\_ PAGE # \_\_\_\_\_

SHEET 1 OF 2

SHOW A PLAN VIEW DRAWING DEPICTING THE CORNER MONUMENT AND SURROUNDING PHYSICAL FEATURES, INCLUDING THE EXCAVATION AREA AND DEPTH.

PLANNING & ZONING COMMITTEE ADOPTED THE ABOVE FORM ON 12/2/1982

CORNER CODE A-17

BE509

(B) Describe any record evidence, monument evidence, occupational evidence, testimonial evidence or any other material evidence you considered, and whether the monument was found or placed.

- 1834 HARRISON ORIGINAL GOVERNMENT NOTES. INTERSECTED NORTH BOUNDARY AT POST. MARKED POST IN MOUND.
- 18?? VOL 6 PG 332 ROAD RECORDS. SHOWS THAT THE CORNER IS 102.96 WEST OF THE CENTER OF THE ROAD.
- 1858 CHURCH VOL 1 PG 80. STAKE MARKED IN THE CENTER OF HIGHWAY. SHOWS 2647.26 TO S 1/4 CORNER OF SECTION 34 AND 2645.28 TO E 1/4 CORNER OF SECTION 34.
- 1860 RUGER VOL 1 PG 129 CALLS FOR A LIMESTONE. SHOWS 2962.74 TO WEST QUARTER CORNER OF SECTION 2, 2623.83 TO NORTH QUARTER CORNER OF SECTION 2. SHOWS STRAIGHT LINE BETWEEN NW AND NE CORNERS OF SECTION 2.
- 1874 RUGER VOL 2 PG 143 FOUND OLD STAKE AND LIMESTONE AT CORNER. DROVE NEW STAKE IN PLACE OF OLD ONE AND PUT ON TOP OF IT LIMESTONE 22 X 7 1/2 X 6. THE CORNER IS 28.38 SOUTH OF R/W OF SOFT MAPLE TREE AND SIDE OF RD RUNNING EAST & 31.02 N OF FENCE ON SOUTH SIDE OF RD RUNNING EAST & 27.39 WEST OF FENCE ON EAST SIDE ON N/S ROAD & 40.26 EST OF R/W OF POPULAR TREES ON W SIDE N/S ROAD. SHOWS 2702.29 TO N 1/4 CORNER OF SECTION 3 & 2655.51 TO E 1/4 CORNER OF SECTION 34, & 2977.26 TO E 1/4 CORNER OF SECTION 3.
- 1934 BATTERMAN #164 FOUND 1.8X0.6X.5 LIMESTONE 6" UNDER SURFACE, SET FLAT L.S. ON TOP & REFERENCED. CALLS FOR 1319.35 TO FOUND L.S. 4X4X1.4 AT N 1/16TH COR OF NW 1/4 OF SEC 2. AND 2639.63 TO FOUND STONE AT N 1/4 COR SEC 2.
- 1965 BATTERMAN JR. VOL 4 PG 169 FOUND PIN. SHOWS MONUMENT BOX & REFERENCE TIES.

FOUND 2" PIPE IN MON. BOX.

C) Was the corner restored through acceptance of (1) an obliterated evidence location, or, (2) a found perpetuated location?

ACCEPTED FOUND PERPETUATED LOCATION.

D) Describe any material discrepancy between the location of the corner as restored or reestablished and the location of that corner as previously restored or reestablished by distance and direction. Show the discrepancy on the plan view drawing under (a), above. Show the distances between the corner as previously restored or reestablished and (1) the corner as restored or reestablished, and (2) to at least 4 of the witness monuments shown on the drawing in (a), above.

(E) Was the corner reestablished through lost corner proportionate methods? If so, show the method, including the directions and distances to other public land survey corners used as evidence or used for proportioning the corner location.

I, Donald Barnes, hereby certify that the corner points as identified by the corner code index were, in a field survey on, established, re-established, monumented, re-monumented, recovered or restored as expressed below and in conformance with the regulations and rules as required in the current manual of survey instructions of the United States Department of Interior, Bureau of Land Management.

COUNTY SURVEYOR FILING DATA

seal

Date of computer entry\_\_\_\_\_

Date microfilmed \_\_\_\_\_

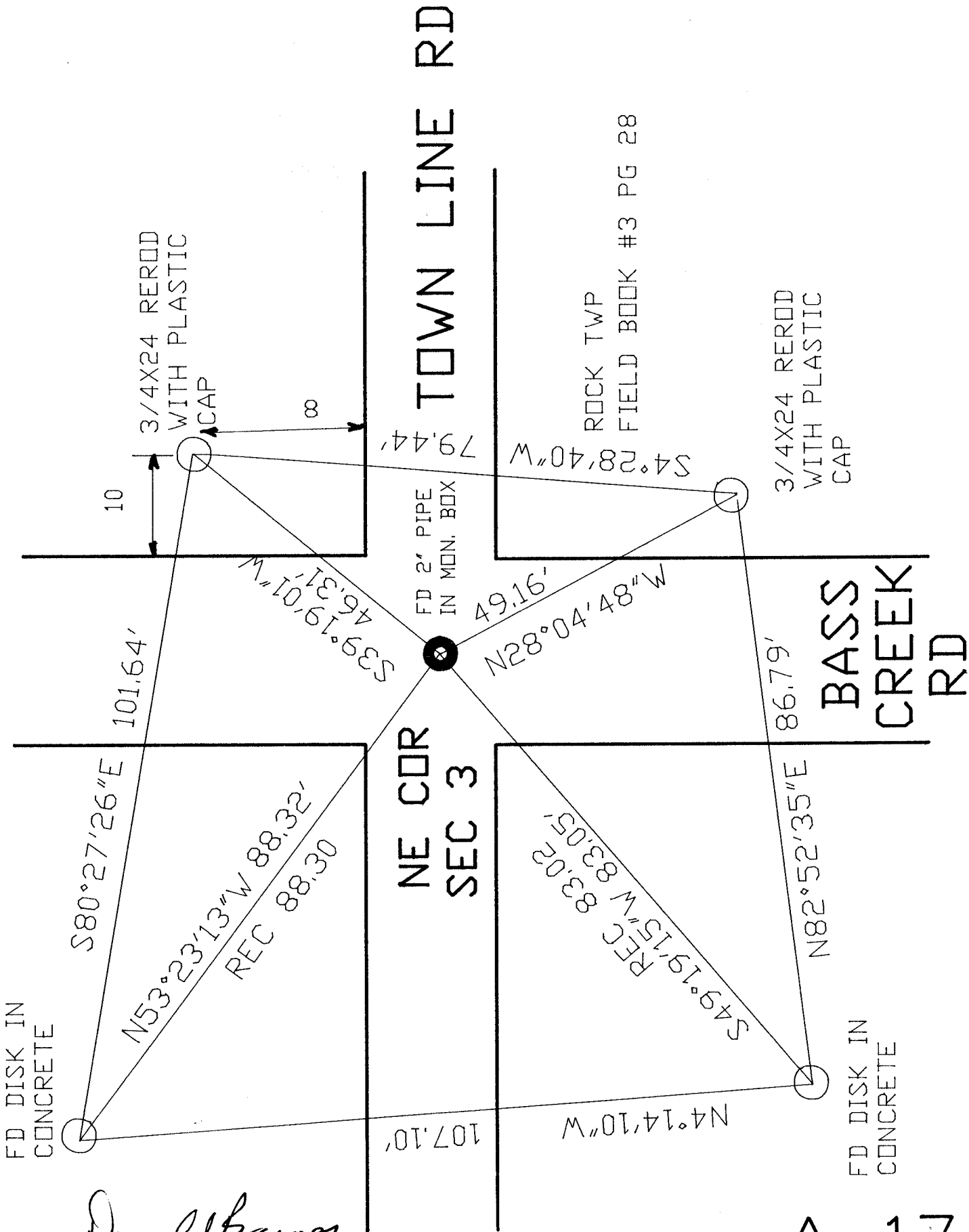
Number of included sheets \_\_\_\_\_

CORNER CODE

AFFIX YOUR LAND SURVEYOR SEAL

*Donald Barnes*  
*Oct 9, 1998*

*A-17*



Donald Barnes  
Oct 9, 1998

A-17

