

# U.S. PUBLIC LAND SURVEY MONUMENT RECORD

For Public Land Survey Corners in:

WI ADMINISTRATIVE CODE A-E 7.08 REQUIREMENT

T. 1 N., R. 12 E

CORNER CODE INDEX

A	1	2	3	4	5	6	7	8	9	10	11	12	13	14	15	16	17	18	19	20	21	22	23	24	25
B																									
C	6	5	4	3	2	1																			
D																									
E																									
F	7	8	9	10	11	12																			
G																									
H																									
I	18	17	16	15	14	13																			
J																									
K																									
L																									
M																									
N																									
O	19	20	21	22	23	24																			
P																									
Q																									
R																									
S	30	29	28	27	26	25																			
T																									
U																									
V																									
W																									
X																									
Y	31	32	33	34	35	36																			
Z																									

BELOIT TWP

ROCK COUNTY WI

IF AVAILABLE  
ROCK COUNTY COORDINATES PREFERRED

North 201,399.65 Elev. \_\_\_\_\_

East 464,437.51

Hor. Datum COUNTY Vert. Datum \_\_\_\_\_

LATITUDE \_\_\_\_\_ ELLIPS. HT. \_\_\_\_\_

LONGITUDE \_\_\_\_\_

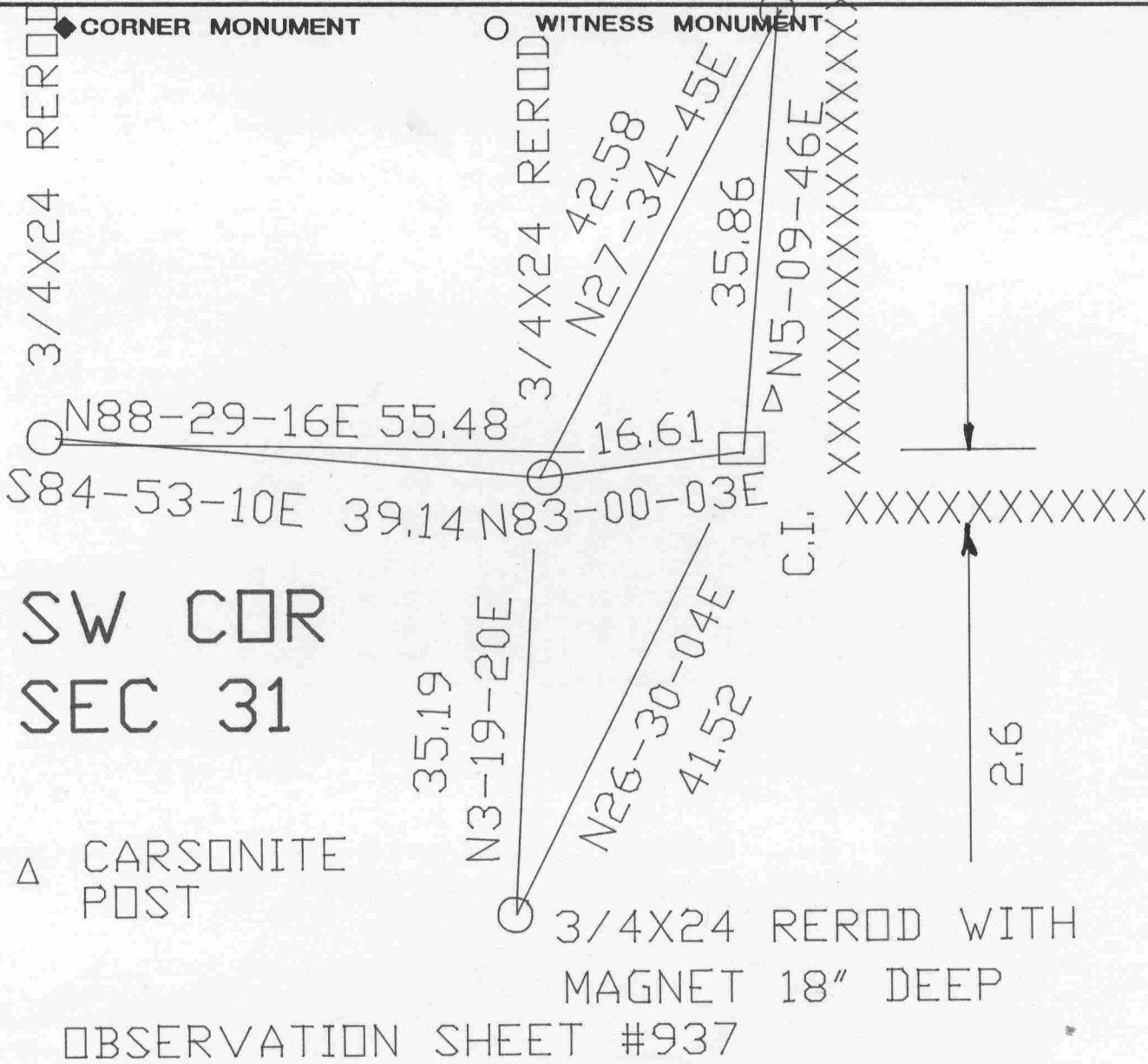
GPS (X) \_\_\_\_\_ TRAVERSE (X) \_\_\_\_\_

BASED ON THE FOLLOWING CONTROL:

PLACE MONUMENT SYMBOL  $\blacklozenge$  AT PROPER LOCATION ON ABOVE INDEX

3/4X24" REROD

BEARINGS ARE BASED ON: COUNTY



OBSERVATION SHEET #937

FIELD BOOK \_\_\_\_\_ PAGE # \_\_\_\_\_

SHEET 1 OF 2

SHOW A PLAN VIEW DRAWING DEPICTING THE CORNER MONUMENT AND SURROUNDING PHYSICAL FEATURES, INCLUDING THE EXCAVATION AREA AND DEPTH.

PLANNING & ZONING COMMITTEE ADOPTED THE ABOVE FORM ON 12/2/1982

CORNER CODE ~~\_\_\_\_\_~~ Z-1

BE621

(B) Describe any record evidence, monument evidence, occupational evidence, testimonial evidence or any other material evidence you considered, and whether the monument was found or placed.

1833 LYON BASE LINE (N.W. TERR)

VAR 6-50E.

2640 PASSING THROUGH A DEEP SAND? AND SOME SCATTERING BUR OAK TREES, SET POST FOR 1/4 SECTION CORNER. BUR OAK 16 S68E 212, NO OTHER BEARING.

5280 SET A POST IN SANDY?, AS BEFORE, FOR CORNER TO SEC 36 OF R11 & SEC 31 OF R12E OF THE 4TH PRINCIPAL MERIDIAN BUR OAK 21 WEST 31.06 CHS, NO OTHER BEARING. THE ABOVE BEARING TREE STANDS ALL ALONE.

LAND, FLAT, WET, 3RD RATE PRAIRIE.

1833 MULLETT ORIGINAL SURVEYOR EAST BOUNDARY OF T1N R11E. NORTH ON EAST SIDE SECTION 36.

297' LEAVE MARSH

1217.04 BLACK OAK 12 IN DIAMETER

1650' ENTER MARSH.

2640 SET QUARTER SECTION POST BUR OAK 10 S34W 2.81, NO OTHER

4290 LEAVER MARSH

5280 SET POST CORNER SECTIONS 25 & 36, BUR OAK 13 S26 1/2W 1.02, BUR OAK 20 N27W .80, LAND EXCEPT MARSH ROLLING SECOND RATE BUR OAK VAR 7-00'

1834 HARRISON (LYON'S BROTHER LAW) MAP SHOWS THE RANDOM STATE LINE THAT LYON PROBABLY SURVEYED BEING SOUTH BETWEEN THE NW & W 1/4 CORNERS OF SEC 31.

1852 McVEAN VOL 1 PG 12 5273.4 TO SW COR SEC 36.

1871 COLLINS REMONUMENTATION OF NEWARK- SET STONE FOR S.E. COR SEC 36 IN PLACE OF OLD STAKE. NORTH ON EAST LINE OF SEC 36 VAR 6-0

2662.44' INTERSECTED 1/4 LINE 7.92' EAST OF CORNER. ST 1/4 STONE IN PLACE OF LARGE STONE IN CENTER OF HIGHWAY AGREEING WITH STUMPS OF WITNESS TREES CORRECTED VAR 5-49'

CONTINUED NORTH-VAR 6

5326.2 SET STONE FOR CORNER SECTIONS 25 & 36 BY STUMPS OF WITNESS TREES.

WEST ON SOUTH LINE SEC 36 VAR 6-30

2646.6 INTERSECTED 1/4 LINE 11.88' SOUTH OF CORNER SET 1/4 STONE IN PLACE OF OLD STAKE AGREEING WITH STUMPS OF WITNESS TREES. CORRECTED VAR 6-46

CONTINUED WEST VAR 6-30

5294.52' INTERSECTED SECTION LINE 18.48' SOUTH OF CORNER SET STONE FOR CORNER OF SECTIONS 35 & 36 IN PLACE OF OLD STAKE. CORRECTED VAR 6-55

1959 BATTERMAN VOL 4 PG 6 2656.44 TO SW COR SEC 31.

1975 MAP #6044 SPRAGUE COORDINATES OF N/S 182,382.93;E/W 2,234,700.66

FOUND CAST IRON MONUMENT LEANING. FOUND LONG CUT LIME STONE LAYING HORIZONTALLY NEXT TO C.I. STRAIGHTENED C.I. AND PLACED CARSONITE POST ON NORTH SIDE OF C.I.

C) Was the corner restored through acceptance of (1) an obliterated evidence location, or, (2) a found perpetuated location?  
ACCEPTED FOUND PERPETUATED LOCATION.

D) Describe any material discrepancy between the location of the corner as restored or reestablished and the location of that corner as previously restored or reestablished by distance and direction. Show the discrepancy on the plan view drawing under (a), above. Show the distances between the corner as previously restored or reestablished and (1) the corner as restored or reestablished, and (2) to at least 4 of the witness monuments shown on the drawing in (a), above.

NONE

*Donald Barnes*  
*2/4/98*

Z-1

(E) Was the corner reestablished through lost corner proportionate methods? If so, show the method, including the directions and distances to other public land survey corners used as evidence or used for proportioning the corner location.

NO

I, Donald Barnes, hereby certify that the corner points as identified by the corner code index were, in a field survey on, OCTOBER 17, 1997, established, re-established, monumented, re-monumented, recovered or restored as expressed below and in conformance with the regulations and rules as required in the current manual of survey instructions of the United States Department of Interior, Bureau of Land Management.

seal

*Donald Barnes*  
*Oct 9, 1998*

COUNTY SURVEYOR FILING DATA

Date of computer entry \_\_\_\_\_

Date microfilmed \_\_\_\_\_

Number of included sheets \_\_\_\_\_  
CORNER CODE

2-1