

U.S. PUBLIC LAND SURVEY MONUMENT RECORD

For Public Land Survey Corners in:

WI ADMINISTRATIVE CODE A-E 7.08 REQUIREMENT

T. 12N., R. 12E

CORNER CODE INDEX

A	1	2	3	4	5	6	7	8	9	10	11	12	13	14	15	16	17	18	19	20	21	22	23	24	25
B	6																								
C		5																							
D			4																						
E				3																					
F					2																				
G						1																			
H	1	8	9	10	11	12																			
J																									
K	18	11	16	15	14	13																			
L																									
M																									
N																									
O	19	20	21	22	23	24																			
P																									
Q																									
R																									
S																									
T	30	29	28	27	26	25																			
U																									
V																									
W																									
X	31	32	33	34	35	36																			
Y																									
Z																									

BELoit TWP
ROCK COUNTY WI

IF AVAILABLE
ROCK COUNTY COORDINATES PREFERRED

North 201,092.65 Elev. _____

East 485,602.44

Hor. Datum County Vert. Datum _____

LATITUDE _____ ELLIPS. HT. _____

LONGITUDE _____

GPS (X) _____ TRAVERSE (X) _____

BASED ON THE FOLLOWING CONTROL:

PLACE MONUMENT SYMBOL AT PROPER LOCATION ON ABOVE INDEX

CORNER MONUMENT

WITNESS MONUMENT

(a)

BEARINGS ARE BASED ON: _____

FIELD BOOK _____ PAGE # _____

SHEET 1 OF 2

SHOW A PLAN VIEW DRAWING DEPICTING THE CORNER MONUMENT AND SURROUNDING PHYSICAL FEATURES, INCLUDING THE EXCAVATION AREA AND DEPTH.

PLANNING & ZONING COMMITTEE ADOPTED THE ABOVE FORM ON 12/2/1982

CORNER CODE Z-17

BE629

(B) Describe any record evidence, monument evidence, occupational evidence, testimonial evidence or any other material evidence you considered, and whether the monument was found or placed.

1833 LYON BASE LINE (N.W. TERR) EAST ALONG THE SOUTH SIDE OF SEC 34.

VAR 6-00E

2640 SET POST AND RAISED A CIRCULAR MOUND OF EARTH FOR 1/4 SECTION CORNER.

5280 SET POST & RAISED A SQUARE MOUND OF EARTH FOR CORNER TO SECTIONS 34 & 35.

LAND ROLLING, DRY, SANDY, 2ND RATE PRAIRIE.

1834 HARRISON (LYON'S BROTHER LAW) MAP SHOWS A RANDOM STATE LINE IN THE SOUTHERN PART OF SECTION 26 WHICH IS PROBABLY THE LINE THAT LYON RAN.

NORTH BETWEEN SECTIONS 34 & 35 VAR 7-10 (MARCH 16TH)

2640 SET POST FOR COR TO QUARTER SECTION IN PRAIRIE ON A LEVEL PLAIN GENTLY DESCENDING EASTWARDLY TOWARD ROCK RIVER. RAISED A MOUND OF SODS.

5280 SET A POST FOR CORNER TO SECTIONS 26 27 34 35 ON SAME PLAIN. MARKED POST & RAISED MOUND.

1854 WILSON - WILLARD & GOODUES ADD. BK 2 PG 39 CALLS FOR A BEARING OF N0-32E ON THE EAST LINE OF THE SE 1/4 OF SEC 34. LIMESTONE AT THE BLOCK CORNER THAT IS 33' WEST & NORTH OF THE SECTION CORNER. STATES ON THE PLAT THAT THE VAR. OF THE NEEDLE IS 6 E.

1882 RUGER - HACKETTS' SECOND ADD. BK 4 PG 18. POB IS 1310.10 WEST OF THE SE CORNER OF SEC 34.

1889 RUGER - HACKETTS 3RD ADD. BK 4 PG 50 P.O.B. IS 622.05 EAST OF THE SW CORNER OF SEC 35.

1902 CALDWELL - KENWOOD HEIGHTS BK 6 PG 44 CALLS FOR A ROCK AT INTERSECTION OF HACKETT & SHIRLAND. SHOWS PIN 33' NORTH AND SOUTH OF SECTION CORNER.

1947 BATTERMAN - ZIEGLERS ADD BK 14 PG 11. POB IS 1652.73' WEST OF THE SECTION CORNER, THE NORTH R/W LINE IS 33 FROM THE SECTION LINE AND THE SOUTH R/W LINE IS 40 SOUTH OF THE SECTION LINE.

1983 BARNES VOL 6 PG 306 SHOWS TIESANDIER'S ANGLE AT NE COR SEC 1 T46N R11E FROM SOUTH LINE OF SW 1/4 OF SEC 34 TO SOUTH LINE OF SE 1/4 SEC OF 179-37-34 (CLOCKWISE)

ESTABLISHED CORNER BY USING PROPERTY MONUMENTS IN WILLARD & GOODHUE ADD, HACKETT'S THIRD ADD., KENWOOD HEIGHTS, & UNKNOWN SUBDIVISION MONUMENTS ON SOUTH SIDE OF STATE LINE.

C) Was the corner restored through acceptance of (1) an obliterated evidence location, or, (2) a found perpetuated location?
RESTORED CORNER THROUGH ACCEPTANCE OF OBLITERATED EVIDENCE LOCATION.

D) Describe any material discrepancy between the location of the corner as restored or reestablished and the location of that corner as previously restored or reestablished by distance and direction. Show the discrepancy on the plan view drawing under (a), above. Show the distances between the corner as previously restored or reestablished and (1) the corner as restored or reestablished, and (2) to at least 4 of the witness monuments shown on the drawing in (a), above.

I, Donald Barnes, hereby certify that the corner points as identified by the corner code index were, in a field survey on, OCT 1995, established, re-established, monumented, re-monumented, recovered or restored as expressed below and in conformance with the regulations and rules as required in the current manual of survey instructions of the United States Department of Interior, Bureau of Land Management.

seal

Donald Barnes
2/13/98

COUNTY SURVEYOR FILING DATA
Date of computer entry _____

Date microfilmed _____

Number of included sheets _____
CORNER CODE

EMBOSS LAND SURVEYOR SEAL

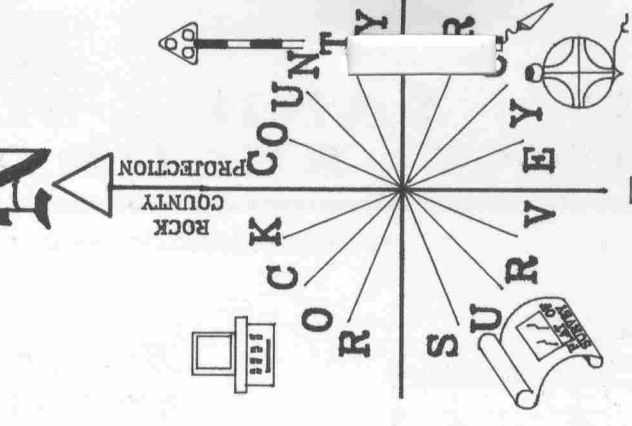
A-E 7.08 REQUIREMENT

2-17

HACKETT ST
HACKETT'S THIRD ADD.
BK 4 PG 50

WILLARD & GOODHUES ADD
TO BELDIT BK 2 PG 39

KENWOOD HEIGHTS
BK 6 PG 44

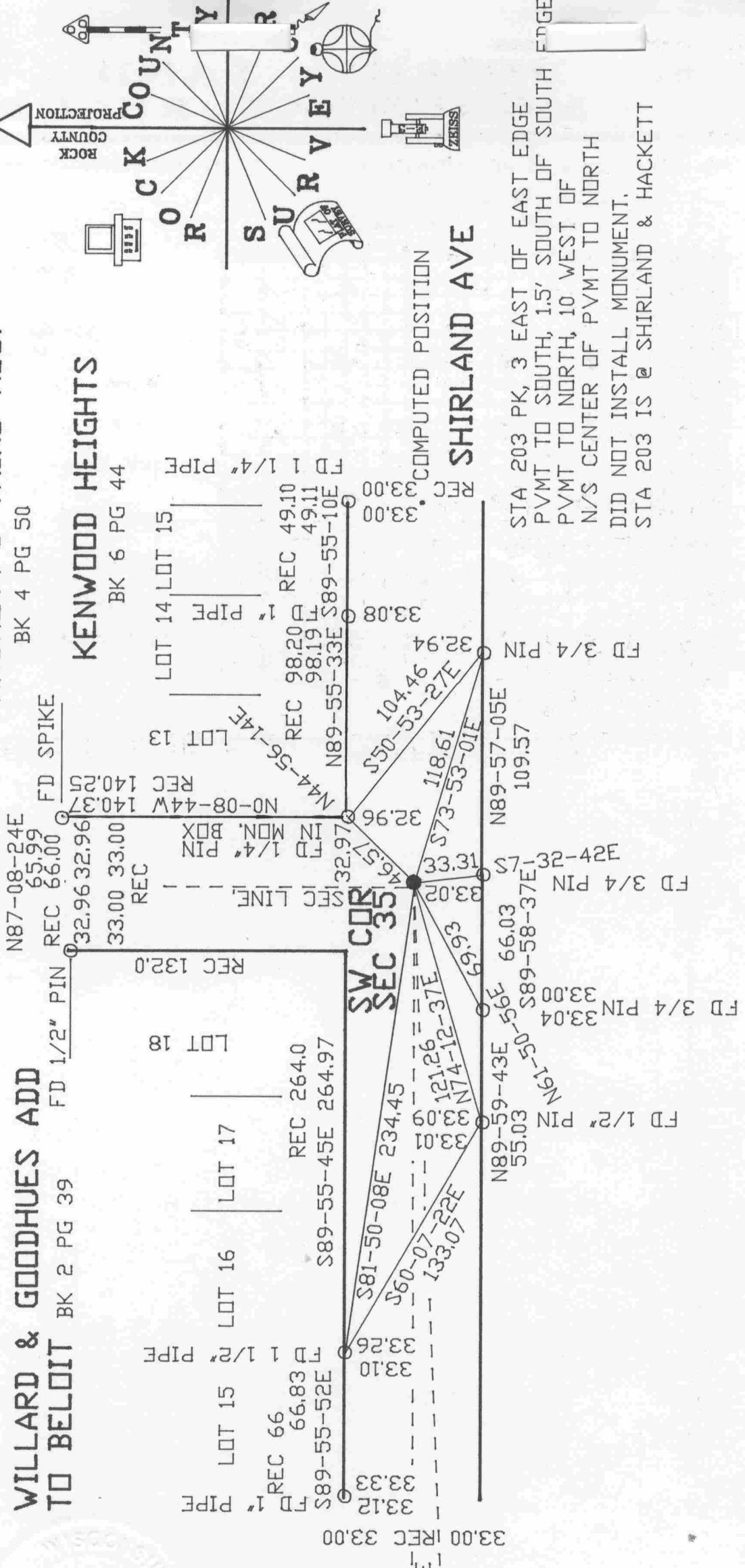


Donald Barnes
8621/31/2

EMBOSSED SEAL

FD ALUM. MON.
S 1/4 CDR
SEC 34

SEC. LINE 1.57
NW CDR
SEC 6
FD 1" PIN



STA 203 PK, 3 EAST OF EAST EDGE
PVMT TO SOUTH, 15' SOUTH OF SOUTH EDGE
PVMT TO NORTH, 10 WEST OF
N/S CENTER OF PVMT TO NORTH
DID NOT INSTALL MONUMENT.
STA 203 IS @ SHIRLAND & HACKETT

41-2