

U.S. PUBLIC LAND SURVEY MONUMENT RECORD

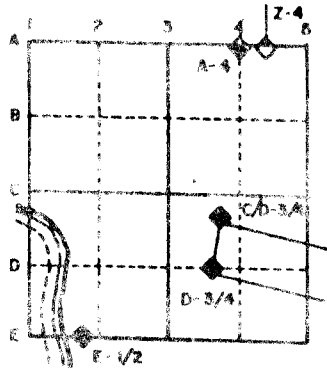
For Public Land Survey Corners in the
T. 1 N., R. 13 E.

CORNER CODE INDEX

	1	2	3	4	5	6	7	8	9	10	11	12	13	14	15	16	17	18	19	20	21	22	23	24	25
A																									
B																									
C		6																							
D			5																						
E				4																					
F					3																				
G						2																			
H																									
I																									
J																									
K																									
L																									
M																									
N																									
O																									
P																									
Q																									
R																									
S																									
T																									
U																									
V																									
W																									
X																									
Y																									
Z																									

PLACE MONUMENT SYMBOL (◆) AT PROPER LOCATION ON ABOVE INDEX

EXAMPLE



TURTLE TWP
ROCK COUNTY WI

IF AVAILABLE
STATE PLANE COORDINATES

North (Y) 203,656.64 Elevation (Z) _____
East (X) 496,219.03 Zone _____
Hor. Datum COUNTY Vert. Datum _____

(a.)

◆ CORNER MONUMENT

○ WITNESS MONUMENT

BEARINGS ARE BASED ON:

FIELD BOOK _____ PAGE # _____

MICROFILMED

SHOW A PLAN VIEW DRAWING DEPICTING THE CORNER MONUMENT AND SURROUNDING PHYSICAL FEATURES, INCLUDING THE EXCAVATION AREA AND DEPTH. THE CORNER MONUMENT SHALL HAVE THE FOLLOWING CHARACTERISTICS: 1) HAVE AT LEAST TWO PREDETERMINED BREAK-OFF POINTS. 2) IF BROKEN, LEAVE A PERMANENTLY MAGNETIZED REMNANT AT THE ORIGINAL POINT. 3) MUST BE EXTENDABLE. 4) THE CAP IS INSCRIBED: ROCK COUNTY SURVEY MONUMENT - PENALTY FOR DISTURBING MARKER. 5) OR AN EXISTING CUT LIMESTONE. AN IRON PIPE 1 1/2" x 4'0" (MINIMUM) MAY BE USED IN AREAS WHERE GROUND WATER IS WITHIN ONE FOOT OF THE SURFACE. IF THE CORNER IS OCCUPIED BY AN IMPROVEMENT (MANHOLE, BURIED CABLE, ETC.) ANY DURABLE, DISTINCT MONUMENT MAY BE USED. CORNERS SHALL BE REFERENCED WITH AT LEAST 4 DURABLE WITNESS MONUMENTS. WITNESS MONUMENTS SHALL BE MADE OF CONCRETE, NATURAL STONE, IRON OR OTHER EQUALLY DURABLE MATERIAL, EXCEPT WOOD. DESCRIBE THE CORNER AND THE WITNESS MONUMENTS.

CORNER CODE:

X /

(B) Describe any record evidence, monument evidence, occupational evidence, testimonial evidence or any other material evidence you considered, and whether the monument was found or placed.

- 1835 ORIGINAL SURVEYOR SET QUARTER SECTION POST. BUR OAK 7 S65W 34.98', BUR OAK 8 N47W 75.24'.
- 1874 RUGER MAP #04989 CALLS FOR 2636.04' TO SW CORNER OF SEC 31, 2576.64 TO CENTER OF SECTION 31, & 2641.32' CENTER 31 TO S 1/4 CORNER SECTION 31.
- 1874 RUGER VOL 2 PG 148 FOUND OLD STAKE AND SW BT AND WHERE STUMP OF NWBT HAD BEEN DUG UP. DROVE STAKE AND PUT LIMESTONE ON E & W SIDES OF IT AND SMALL PIECES OF COAL ON N&S SIDES.
- 1874 RUGER VOL 2 PG 149 USED TO SUBDIVIDE SECTION 31. 2576.64 TO CENTER SECTION 31, 2636.04 TO SW CORNER OF SECTION 31, 2641.32 FROM S 1/4 CORNER TO CENTER OF SECTION 31.
- 1902 GUSTAF CARLSON SUB 6 PG 48 A & B "HILLCREST PARK ADD TO BELOIT" CALLS FOR AN IRON MONUMENT AT W 1/4 CORNER OF SECTION 31. CALLS FOR 466.25 TO THE PROPERTY LINE THAT IS TO THE NORTH.
- 1939 BATTERMAN SUB 13 PG 2 "HANCOCK FIELD ADD". CORNER DESTROYED. ESTABLISHED POSITION BUT DID NOT SET ANY MONUMENT. CALLS FOR 211.13 TO PROPERTY CORNER TO THE SOUTH.
- 1945 BATTERMAN SUB 13 PG 12 DID NOT CALL FOR A MONUMENT AT THE W 1/4 CORNER OF SECTION 31. CALLS FOR 1346.75' TO PIN ON E/W CENTER LINE OF SECTION 36 WHICH IS THE POB FOR THE SUB.

A MONUMENT CAN NOT BE INSTALLED BECAUSE OF THE HOUSE AND DRIVEWAY.

C) Was the corner restored through acceptance of (1) an obliterated evidence location, or, (2) a found perpetuated location?

CORNER WAS RESTORED THROUGH ACCEPTANCE OF OBLITERATED EVIDENCE LOCATION. I USED BATTERMAN'S 1939 SUBDIVISION "HANCOCK FIELD ADD" AND CALSON'S 1902 SUBDIVISION "HILLCREST PARK ADD TO BELOIT" TO ESTABLISH THE POSITION. USING THE SW CORNER OF SECTION 31 AND THE FOUND PIN THAT IS 246.40 FROM THE W 1/4 CORNER OF SECTION 31, I ESTABLISHED THE E/W POSITION OF THE CORNER. THIS IS IN HARMONY WITH BATTERMAN'S OTHER CALL DISTANCES TO THE SECTION LINE AS SHOWN IN THE MAP. THIS E/W POSITION IS ALSO IN HARMONY WITH CARLSON'S CALL DISTANCES TO THE FOUND PINS AND PIPES. THE N/S POSITION WAS ESTABLISHED BY SPLITTING THE DIFFERENCE OF BATTERMAN AND CARLSON'S CALL DISTANCES TO THE W 1/4 CORNER OF SECTION 31. CARLSON'S DISTANCE OF 466.25' NOW MEASURES 465.94 (DIFFERENCE OF - 0.31') AND BATTERMAN'S DISTANCE OF 246.66 NOW MEASURES 246.40 (DIFFERENCE OF - 0.26"). THIS IS ALSO IN HARMONY WITH THE FOUND W 1/16TH CORNER OF THE NW 1/4 OF SECTION 31. THE FOUND PIPE IS .10 EAST OF A LINE BETWEEN THE NW AND W 1/4 CORNERS OF SECTION 31. THE N/S POSITION IS WITHIN 2.17' TO A POINT MIDWAY BETWEEN THE NW AND SW CORNERS OF SECTION 31.

I, Donald Barnes, hereby certify that the corner points as identified by the corner code index were, in a field survey on, established, re-established, monumented, re-monumented, recovered or restored as expressed below and in conformance with the regulations and rules as required in the current manual of survey instructions of the United States Department of Interior, Bureau of Land Management.

seal

Donald Barnes

3/23/93

AFFIX YOUR LAND SURVEYOR SEAL

COUNTY SURVEYOR FILING DATA

Date of computer entry _____

Date microfilmed _____

Number of included sheets 4
CORNER CODE

X /

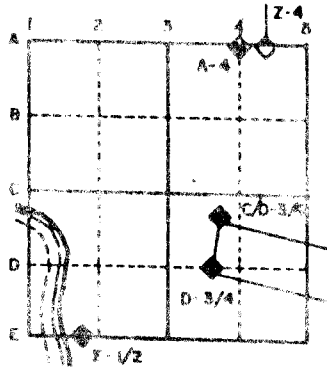
U. S. PUBLIC LAND SURVEY MONUMENT RECORD

For Public Land Survey Corners in the
 T. 1 N., R. 13 E.
 CORNER CODE INDEX

	1	2	3	4	5	6	7	8	9	10	11	12	13	14	15	16	17	18	19	20	21	22	23	24	25
A																									
B																									
C	6																								
D		5																							
E			4																						
F				3																					
G					2																				
H																									
I																									
J																									
K																									
L																									
M																									
N																									
O																									
P																									
Q																									
R																									
S																									
T																									
U																									
V																									
W																									
X																									
Y																									
Z																									

PLACE MONUMENT SYMBOL (◆) AT PROPER LOCATION ON ABOVE INDEX

EXAMPLE



TURTLE TWP
ROCK COUNTY WI

IF AVAILABLE
 STATE PLANE COORDINATES

North (Y) _____ Eleve. (Z) _____
 East (X) _____ Zone _____
 Hor. Datum _____ Vert. Datum _____

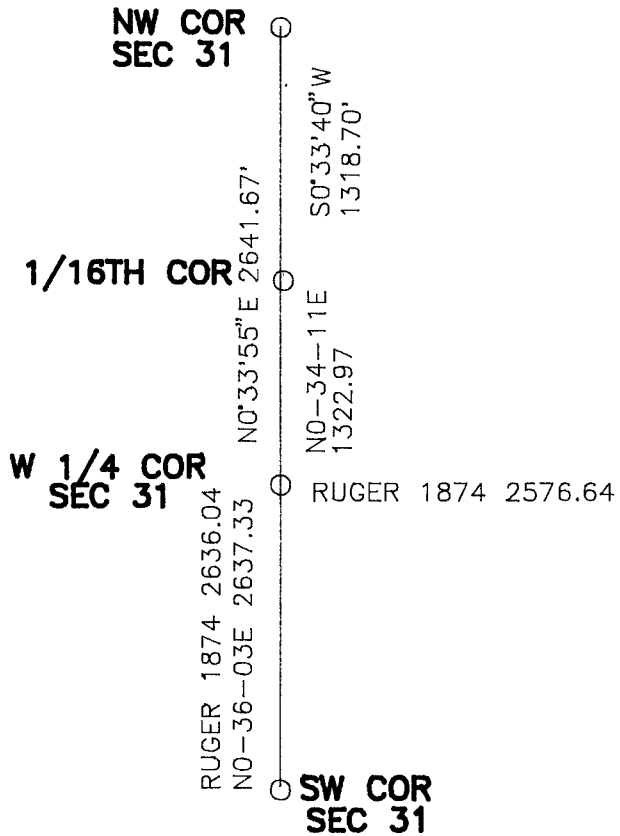
(a.)

◆ CORNER MONUMENT

○ WITNESS MONUMENT

BEARINGS ARE BASED ON:

Donald Barnes
 3/23/93



MICROFILM

FIELD BOOK _____ PAGE # _____

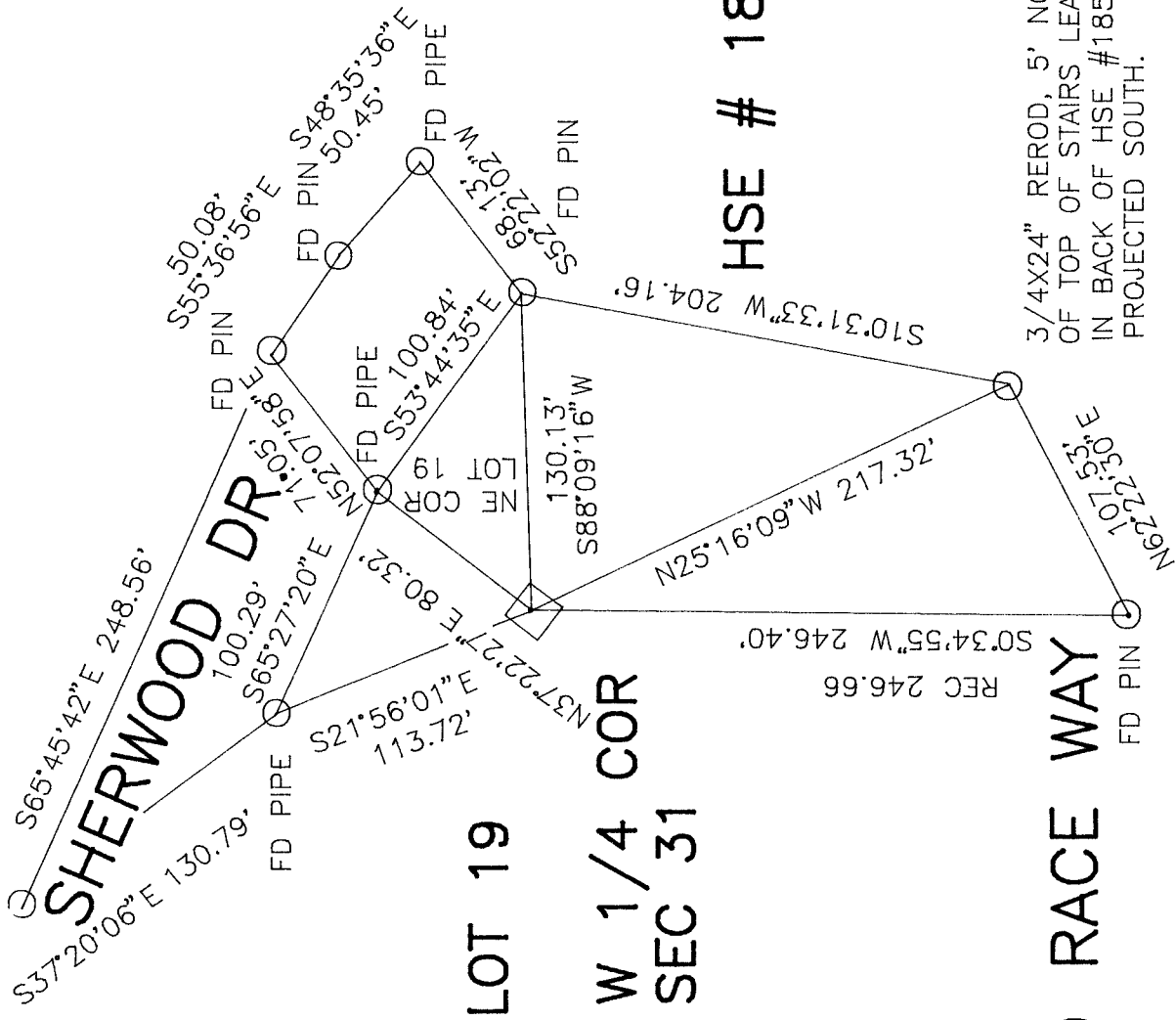
2 OF 5

SHOW A PLAN VIEW DRAWING DEPICTING THE CORNER MONUMENT AND SURROUNDING PHYSICAL FEATURES, INCLUDING THE EXCAVATION AREA AND DEPTH. THE CORNER MONUMENT SHALL HAVE THE FOLLOWING CHARACTERISTICS: 1) HAVE AT LEAST TWO PREDETERMINED BREAK-OFF POINTS. 2) IF BROKEN, LEAVE A PERMANENTLY MAGNETIZED REMNANT AT THE ORIGINAL POINT. 3) MUST BE EXTENDABLE. 4) THE CAP IS INSCRIBED: ROCK COUNTY SURVEY MONUMENT - PENALTY FOR DISTURBING MARKER. 5) OR AN EXISTING CUT LIMESTONE. AN IRON PIPE 1 1/2" x 4'0" (MINIMUM) MAY BE USED IN AREAS WHERE GROUND WATER IS WITHIN ONE FOOT OF THE SURFACE. IF THE CORNER IS OCCUPIED BY AN IMPROVEMENT (MANHOLE, BURIED CABLE, ETC.) ANY DURABLE, DISTINCT MONUMENT MAY BE USED. CORNERS SHALL BE REFERENCED WITH AT LEAST 4 DURABLE WITNESS MONUMENTS. WITNESS MONUMENTS SHALL BE MADE OF CONCRETE, NATURAL STONE, IRON OR OTHER EQUALLY DURABLE MATERIAL, EXCEPT WOOD. DESCRIBE THE CORNER AND THE WITNESS MONUMENTS.

CORNER CODE:
 X /

HSE #1821

FD 3/8" PIN



LOT 19

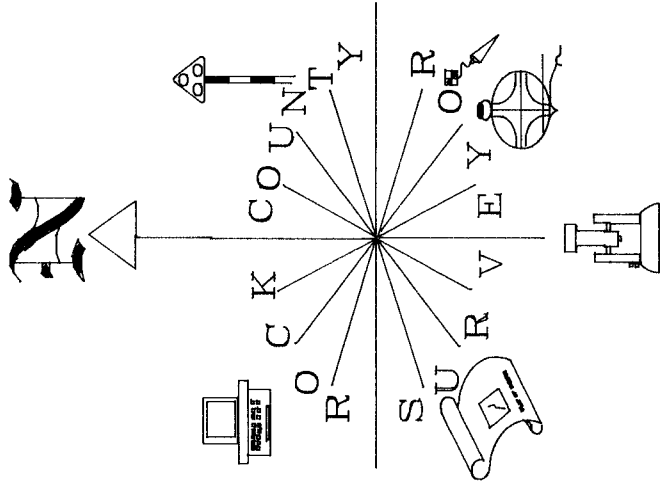
W 1/4 COR
SEC 31

HSE # 1850

OLD RACE WAY

X -

3 of 5



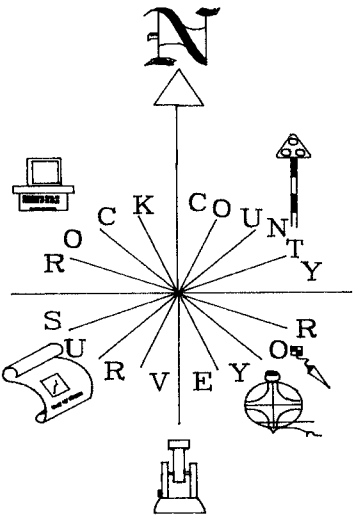
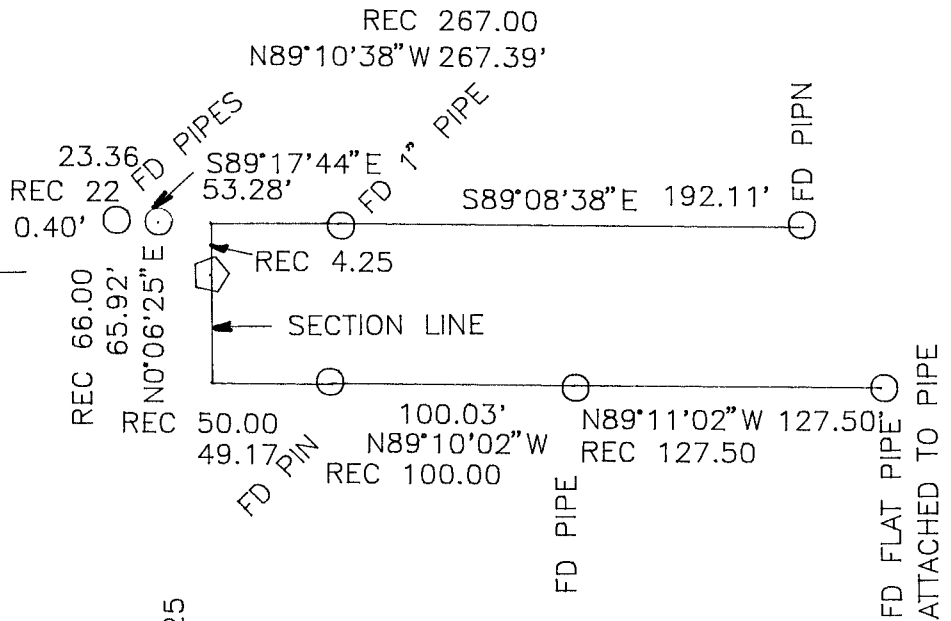
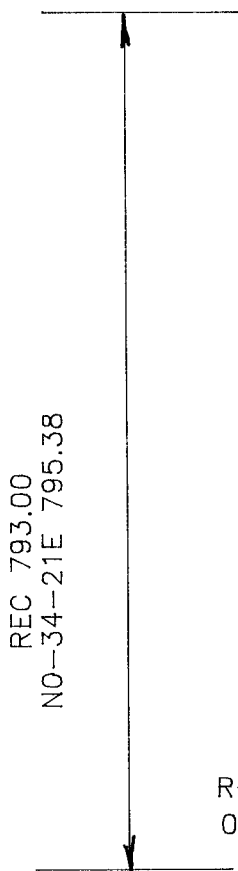
Donald Barnes
3/23/93

3/4X24" REROD, 5' NORTH OF
OF TOP OF STAIRS LEADING TO OLD RACE WAY,
IN BACK OF HSE #1850, 2 W OF EAST EDGE OF HSE #1850
PROJECTED SOUTH.

Donald Barnes

3/23/93

FOUND 1 1/4" PIPE 11" DEEP
0.10' EAST OF LINE BETWEEN NW COR &
W 1/4 CORNERS OF SECTION 31
EAST PVMT EDGE OF BREWSTER PROJECTED
NORTH & CENTER OF COLLEY RD PVMT.



1902 CARLSON 466.25
NO-33-55E 465.94

W 1/4 COR
SEC 31

MONUMENT CAN NOT BE INSTALLED
BECAUSE OF HOUSE IMPROVEMENTS.

W 1/4 COR
SEC 31

Donald Barnes
3/23/93

MONUMENT CAN NOT BE INSTALLED
BECAUSE OF HOUSE IMPROVEMENTS.

