

(B) Describe any record evidence, monument evidence, occupational evidence, testimonial evidence or any other material evidence you considered, and whether the monument was found or placed.

1836 LYONS SET POST CORNER TO SECTIONS 26,27,34,&35 BUR OAK 14 S34W 35 & BUR OAK 10 N77W 49.

1961 BATTERMAN VOL 4 PG 88 FOUND REMAINS OF STAKE & RESET 1" PIPE. 2663.20 TO N 1/4 COR SEC 35.

1968 BATTERMAN VOL 4 PG 376 2620.64 TO S 1/4 COR SEC 27.

FOUND 1" PIPE WITH CARSONITE POST. 2621.90 (REC 2620.64) TO S 1/4 COR SEC 27, 2663.02 (REC 2663.20) TO N 1/4 COR SEC 35.

C) Was the corner restored through acceptance of (1) an obliterated evidence location, or, (2) a found perpetuated location?
ACCEPTED FOUND PERPETUATED LOCATION.

D) Describe any material discrepancy between the location of the corner as restored or reestablished and the location of that corner as previously restored or reestablished by distance and direction. Show the discrepancy on the plan view drawing under (a), above. Show the distances between the corner as previously restored or reestablished and (1) the corner as restored or reestablished, and (2) to at least 4 of the witness monuments shown on the drawing in (a), above.

(E) Was the corner reestablished through lost corner proportionate methods? If so, show the method, including the directions and distances to other public land survey corners used as evidence or used for proportioning the corner location.

NO

I, Donald Barnes, hereby certify that the corner points as identified by the corner code index were, in a field survey on, 1994, established, re-established, monumented, re-monumented, recovered or restored as expressed below and in conformance with the regulations and rules as required in the current manual of survey instructions of the United States Department of Interior, Bureau of Land Management.

seal

Donald Barnes
7/11/95

EMBOSS LAND SURVEYOR SEAL

COUNTY SURVEYOR FILING DATA

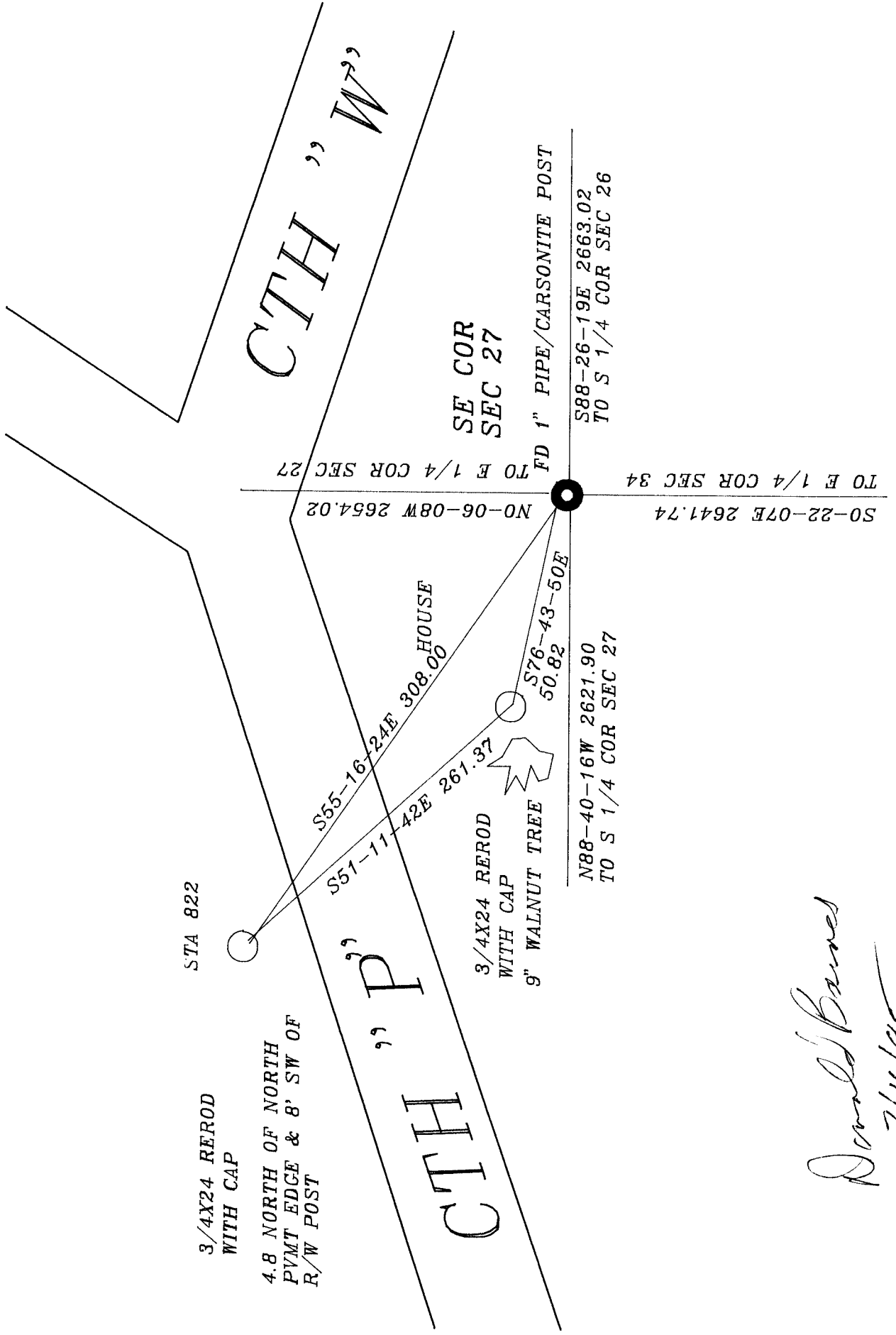
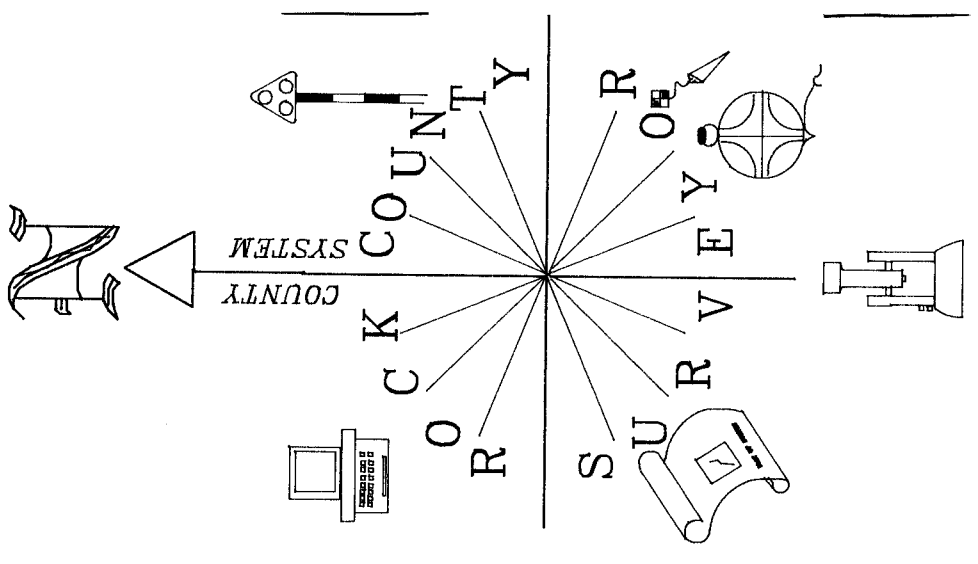
Date of computer entry _____

Date microfilmed _____

Number of included sheets _____

CORNER CODE

A-E 7.08 REQUIREMENT



Donald Barnes
 7/11/95