



TU 604

**(B) Describe any record evidence, monument evidence, occupational evidence, testimonial evidence or any other material evidence you considered, and whether the monument was found or placed.**

1859 HOBART VOL 1 PG 108 NO STATEMENT ABOUT THE MONUMENT. USED TO SUBDIVIDE SECTION 29. 2659.8 TO SW, 2657.16 FROM W 1/4 CENTER OF SEC 29, 2641.32 W 1/4 TO SW CORNERS OF SECTION 29. BEARING ON E/W 1/4 LINE SEC 29 N89-21W, BEARING ON SOUTH LINE OF SW 1/4 OF SEC 29 N89-25W, S 1/16 TO N 1/16 OF SW 1/4 2640.0 N42'W & BEARING FROM SW TO W 1/4 CORNER N0-40'W. VAR 5-30

1987 LEE CSM VOL 13 PG 102. CALLS FOR 2670.75 TO NE 32, 2656.86 TO NW COR OF SECTION 32. BEARINGS INDICATE CORNER IS ON LINE WITH THE NW & NE CORNERS OF SEC 32. THERE IS A PIPE 124.66 WEST OF THE CORNER.

FOUND 1"X2"X12" WOOD HUB 1' BELOW PAVEMENT. FOUND NATURAL GROUND ABOUT 3' BELOW PAVEMENT. DUG 6' DEEP AND FOUND NOTHING ELSE. WOOD HUB IS IN HARMONY WITH HOBART'S SUBDIVISION OF SECTION 29 AND HIS BEARING TO THE SW CORNER OF SEC 29.

**C) Was the corner restored through acceptance of (1) an obliterated evidence location, or, (2) a found perpetuated location?**  
ACCEPTED FOUND HUB.

**D) Describe any material discrepancy between the location of the corner as restored or reestablished and the location of that corner as previously restored or reestablished by distance and direction. Show the discrepancy on the plan view drawing under (a), above. Show the distances between the corner as previously restored or reestablished and (1) the corner as restored or reestablished, and (2) to at least 4 of the witness monuments shown on the drawing in (a), above.**

**(E) Was the corner reestablished through lost corner proportionate methods? If so, show the method, including the directions and distances to other public land survey corners used as evidence or used for proportioning the corner location.**  
NO

I, Donald Barnes, hereby certify that the corner points as identified by the corner code index were, in a field survey on, JUNE, 1995, established, re-established, monumented, re-monumented, recovered or restored as expressed below and in conformance with the regulations and rules as required in the current manual of survey instructions of the United States Department of Interior, Bureau of Land Management.

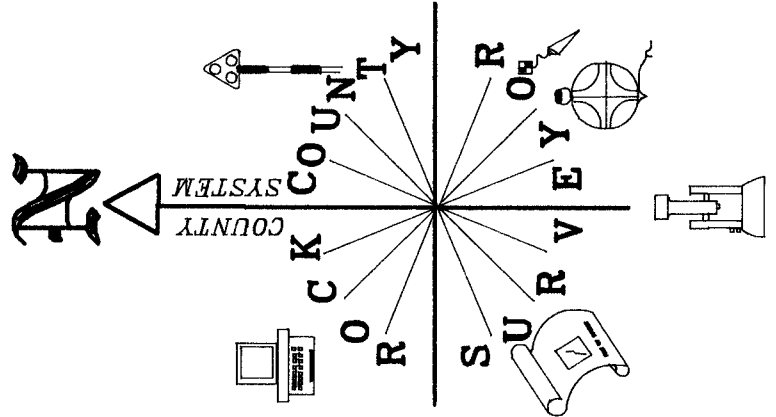
seal  
*Donald Barnes*  
6/12/95

COUNTY SURVEYOR FILING DATA  
Date of computer entry \_\_\_\_\_  
Date microfilmed \_\_\_\_\_  
Number of included sheets \_\_\_\_\_  
CORNER CODE \_\_\_\_\_

**AFFIX YOUR LAND SURVEYOR SEAL**

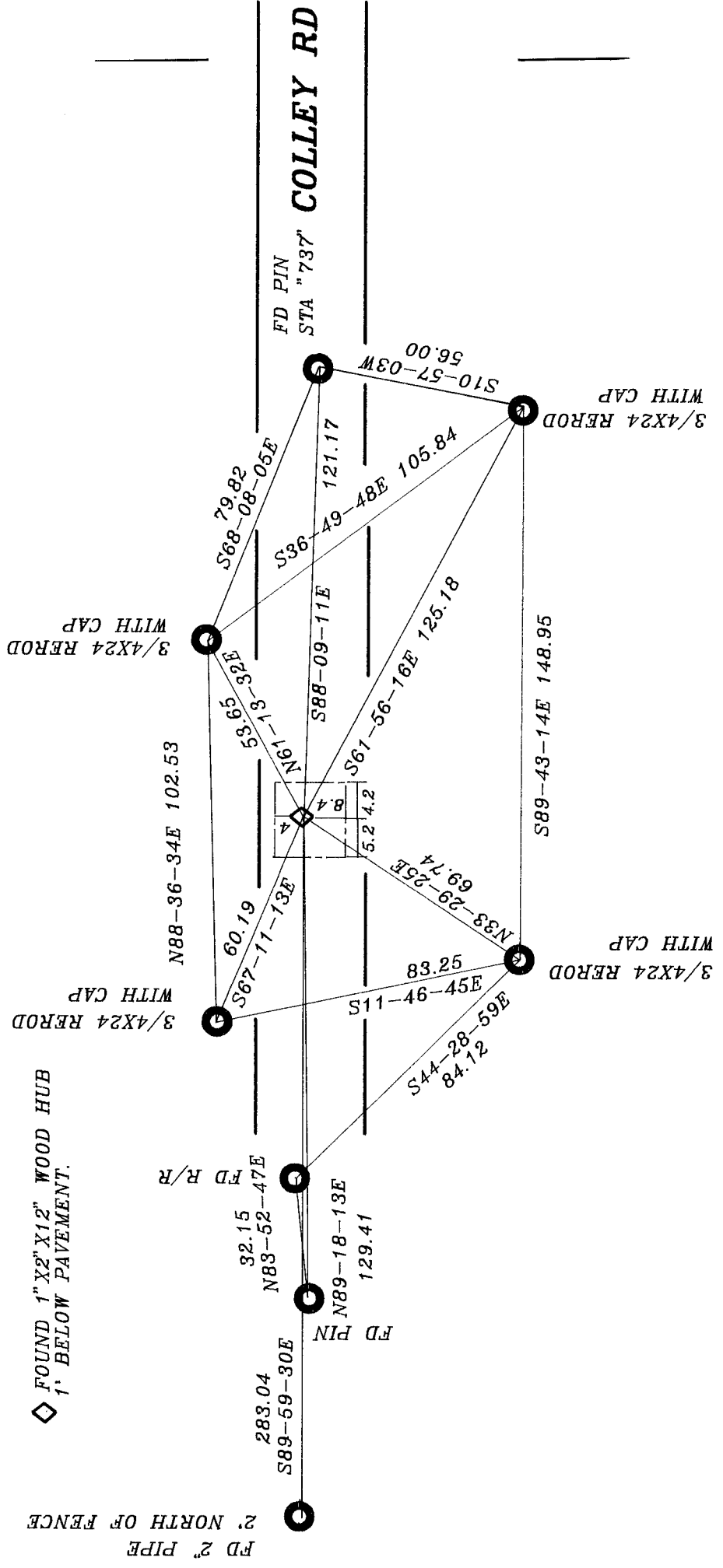
v 7

Donald Barnes  
June 9, 1995



**S 1/4 COR  
SEC 29**

◇ FOUND 1" X 2" X 12" WOOD HUB  
1' BELOW PAVEMENT.



V V