

U.S. PUBLIC LAND SURVEY MONUMENT RECORD

For Public Land Survey Corners in:

WI ADMINISTRATIVE CODE A-E 7.08 REQUIREMENT

T. 1 N., R. 12 E

CORNER CODE INDEX

	1	2	3	4	5	6	7	8	9	10	11	12	13	14	15	16	17	18	19	20	21	22	23	24	25
A																									
B	6																								
C		5																							
D			A																						
E				3																					
F																									
G	1																								
H		8																							
J			9																						
K				10																					
L																									
M	18																								
N		11																							
O			16																						
P				15																					
R																									
S																									
T																									
U																									
V																									
W																									
X																									
Y																									
Z																									

BELoit TWP
ROCK COUNTY WI

IF AVAILABLE
ROCK COUNTY COORDINATES PREFERRED

North 206,394.43 Elev. _____

East 485,586.98

Hor. Datum _____ Vert. Datum _____

LATITUDE _____ ELLIPS. HT. _____

LONGITUDE _____

GPS (X) _____ TRAVERSE (X) _____

BASED ON THE FOLLOWING CONTROL:

PLACE MONUMENT SYMBOL AT PROPER LOCATION ON ABOVE INDEX

CORNER MONUMENT

WITNESS MONUMENT

(a)

BEARINGS ARE BASED ON: _____

FIELD BOOK _____ PAGE # _____

SHEET 1 OF 3

SHOW A PLAN VIEW DRAWING DEPICTING THE CORNER MONUMENT AND SURROUNDING PHYSICAL FEATURES, INCLUDING THE EXCAVATION AREA AND DEPTH.

PLANNING & ZONING COMMITTEE ADOPTED THE ABOVE FORM ON 12/2/1982

CORNER CODE V17

BE609

(B) Describe any record evidence, monument evidence, occupational evidence, testimonial evidence or any other material evidence you considered, and whether the monument was found or placed.

- 1834 HARRISON NORTH BETWEEN SECTIONS 34 & 35 VAR 7-00 (MARCH 26TH) 2640 SET POST FOR COR TO QUARTER SECTION IN PRAIRIE ON A LEVEL PLAIN GENTLY DESCENDING EASTWARDLY TOWARDS ROCK RIVER. RAISED A MOUND OF SODS.
- 5280 SET A POST FOR CORNER TO SECTION 26,27,34,35 ON SAME PLAIN. MARKED POST & RAISED MOUND.
- 1848 TOWN ROAD RECORDS BK 1 PG 99. FROM THE CENTER OF THE SOUTH END OF 4TH ST. IN HACKETT'S ADD NORTH 1E IN THE CENTER OF SAID STREET 6145.26' TO HACKETT'S AND LAWRENCE ADD; THENCE N 2 1/4 E IN THE CENTER OF 4TH ST 2630.76' TO THE LINE BETWEEN SECTIONS 26 & 35; THENCE WEST ON SAID SECTION LINE 661.98' TO THE CENTER OF 4TH ST IN NOGGLE'S VILLAGE PLAT (NOT RECORDED); THENCE NORTH IN THE CENTER OF SAID 4TH ST 5973' TO THE NORTH END OF 4TH ST; THENCE N10W 2343' TO THE POINT WHERE THE HIGHWAY FROM BELOIT TO JANESVILLE LAID OUT JUNE 3RD, 1844 CROSSES THE NORTH AND SOUTH QUARTER SECTION LINE IN SECTION 26 BEING 66' SOUTH OF THE SW CORNER OF LOT 1 IN SAID SECTION 26. THE ABOVE DESCRIBED LINE SHALL BE THE CENTERLINE OF A HIGHWAY.
- 1848 TOWN ROAD RECORDS BK 1 PG 101. COMMENCING AT THE SE CORNER OF SEC 27 OF T1N R12E AND THENCE RUNNING WEST UPON THE SECTION LINE AND TERMINATING AT THE SW CORNER OF SEC 30 T1N R12E. --- HIGHWAY BE LAID OUT IN SAID TOWN OF THE WIDTH OF FOUR RODS THE SECTION LINE TO BE THE CENTER OF SAID HIGHWAY COMMENCING AT THE SE COR OF SEC 27 AND RUNNING THENCE WEST FOUR MILES TO THE SW COR OF SEC 30.
- 1853 TOWN ROAD RECORDS BK 1 PG 202 ---- HIGHWAY FOUR RODS WIDE SHALL BE AND IS HEREBY LAID FROM THE NE COR OF SEC 34, AND THE NW COR SEC 35 RUNNING SOUTH ON THE SECTION LINE TO WALKER'S ADD AND THE ABOVE ROAD IS ----- KNOWN AS THE BELOIT AND MADISON ROAD.
- 1854 WILSON - ROCKWELLS ADD. BK 2 PG 51. SUBDIVISION BLOCK CORNERS & SECTION CORNERS ARE LIMESTONES WITH 1/2" DIA. HOLES THAT ARE ABOUT 10-12" BELOW GROUND. N89-18W 2561.34 TO S 1/4 COR SEC 26, 1319.72 TO W 1/16TH COR OF SW 1/4 SEC 26, & VARIATION OF NEEDLE IS 6-21E. 33 WEST OF EAST ROW, 33' SOUTH OF NORTH ROW.
- 1856 HUBART - CLARKE'S ADD BK 3 PG 24 CALLS FOR CORNER BUT STATES NOTHING ABOUT IT. 33' R/W TO THE NORTH & WEST. BEARING OF SOUTH LINE OF SE 1/4 OF SEC 27 IS N88-57E & BEARING OF EAST LINE OF SE 1/4 OR SEC 27 IS N0-45W.
- 1895 SWOPE - MECHANICS ADD BK 5 PG 67. STATES NOTHING ABOUT MONUMENT. CALLS FOR IT IN THE INTERSECTION OF LIBERTY & HACKETT. ROW IS 33 FOR BOTH ROADS. 1260.38 FROM SW COR SEC 26 TO CENTER OF 8TH ST
- 1898 WILSON MECHANICS 2ND ADD BK 6 PG 11. CALLS FOR A ROCK AND A DISTANCE OF 1332.8 TO S 1/16 OF SE 1/4 SEC 27 (A ROCK) AND AN ANGLE OF 90-35 ALONG EAST SECTION LINE TO 1/16TH COR OF SEC 27
- 1899 SWOPE- ROSEDALE ADDITION BK 6 PG 22 CALLS FOR SE COR SEC 27, 329.4 EAST OF CENTER OF LINCOLN AVE., 33 EAST OF WEST ROW LINE OF HACKETT ST, 33 WEST OF EAST ROW LINE OF HACKETT ST, & 662.5 FROM REROD AT CENTER OF MIDDLE ST.
- 1900 CALDWELL - MERRIMANS ADD. BK 6 PG 29 CALLS FOR STONE. 599' TO A STONE AT THE CENTER OF THE INTERSECTION OF A STREET TO THE EAST, 33 SOUTH OF NORTH ROW LINE OF LIBERTY ST, & 33 WEST OF EAST ROW LINE OF HACKETT ST.
- 1917 BATTERMAN - HALS SUB. BK 10 PG 1. CALLS FOR CORNER BUT STATES NOTHING ABOUT. P.O.B FOR SUBDIVISION IS 662.5' NORTH OF SEC. CORNER.
- 1959 BATTERMAN CSM 1 PG 37 SAME AS CSM 1 PG 42.
- 1960 BATTERMAN CSM 1 PG 42 CALLS FOR CORNER BUT STATES NOTHING ABOUT IT. NORTH 1356.50' TO A POINT ON A LINE THAT IS 33 FROM A PIPE IN A MONUMENT BOX ON THE R/W LINE. THIS POINT IS ON LINE WITH THIS PIPE AND OTHER PIPE IN A MONUMENT BOX THAT IS 335.40 TO THE EAST.

PAST ROAD CONSTRUCTION & UNDERGROUND PUBLIC IMPROVEMENT PROJECTS PROBABLY DESTROYED MONUMENT.

Donald Barnes OCT 8, 1997

V17

C) Was the corner restored through acceptance of (1) an obliterated evidence location, or, (2) a found perpetuated location?
RESTORED CORNER THROUGH ACCEPTANCE OF OBLITERATED EVIDENCE LOCATION.
USED RECORD PROPERTY CORNERS IN VICINITY OF CORNER AS SHOWN IN DIAGRAM
TO DETERMINE POSITION.

D) Describe any material discrepancy between the location of the corner as restored or reestablished and the location of that corner as previously restored or reestablished by distance and direction. Show the discrepancy on the plan view drawing under (a), above. Show the distances between the corner as previously restored or reestablished and (1) the corner as restored or reestablished, and (2) to at least 4 of the witness monuments shown on the drawing in (a), above.

(E) Was the corner reestablished through lost corner proportionate methods? If so, show the method, including the directions and distances to other public land survey corners used as evidence or used for proportioning the corner location.
NO

I, Donald Barnes, hereby certify that the corner points as identified by the corner code index were, in a field survey on, , established, re-established, monumented, re-monumented, recovered or restored as expressed below and in conformance with the regulations and rules as required in the current manual of survey instructions of the United States Department of Interior, Bureau of Land Management.

COUNTY SURVEYOR FILING DATA

Date of computer entry _____

Date microfilmed _____

Number of included sheets 2

CORNER CODE

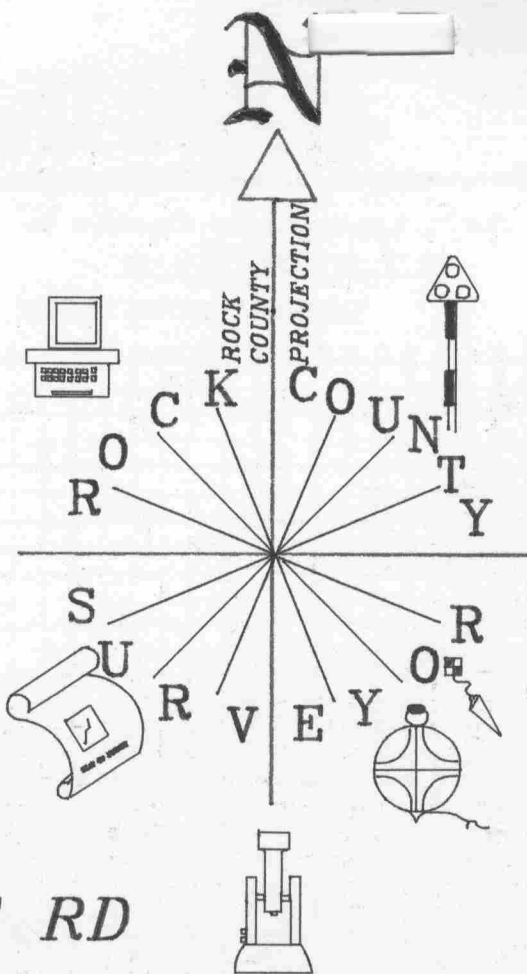
EMBOSS LAND SURVEYOR SEAL

A-E 7.08 REQUIREMENT

V17

NE COR
SEC 34

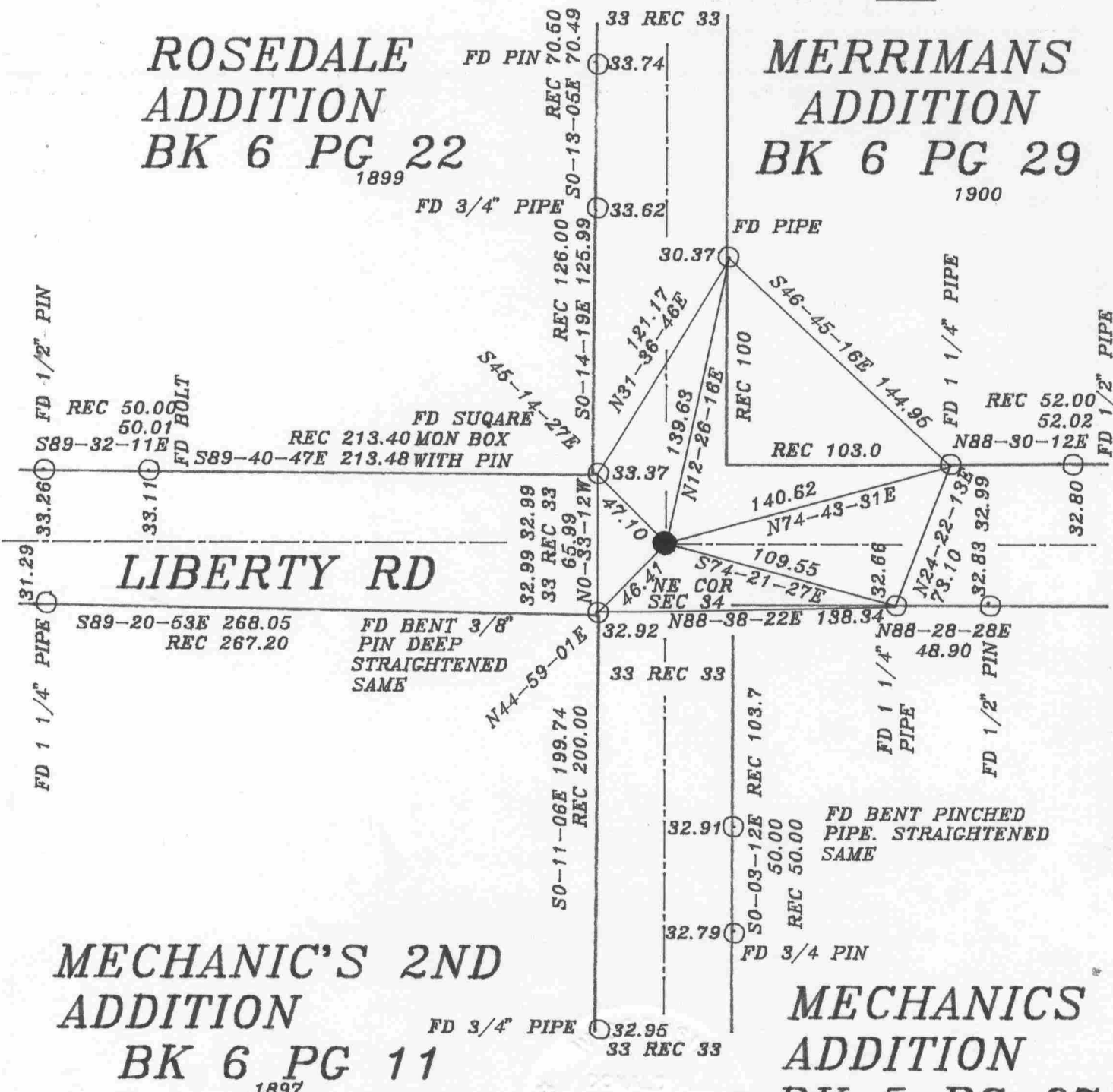
SECTION LINE
OBSERVATION SHEET #378



HACKETT RD

ROSEDALE
ADDITION
BK 6 PG 22
1899

MERRIMANS
ADDITION
BK 6 PG 29
1900



MECHANIC'S 2ND
ADDITION
BK 6 PG 11
1897

MECHANICS
ADDITION
BK 5 PG 67
1895

Donald Barnes
EMBOSSSED SEAL
Oct 8, 1997

V-17