

U.S. PUBLIC LAND SURVEY MONUMENT RECORD

For Public Land Survey Corners in:

WI ADMINISTRATIVE CODE A-E 7.08 REQUIREMENT

T. 1 N., R. 12 E

BELOIT TWP TWP

CORNER CODE INDEX

ROCK COUNTY WI

IF AVAILABLE

ROCK COUNTY COORDINATES PREFERRED

1	2	3	4	5	6	7	8	9	10	11	12	13	14	15	16	17	18	19	20	21	22	23	24	25
A																								
B	6																							
C		5																						
D			4																					
E				3																				
F					2																			
G	1																							
H		8																						
J			9																					
K				10																				
L	18																							
M		17																						
N			16																					
O				15																				
P					14																			
Q	19																							
R		20																						
S			21																					
T				22																				
U					23																			
V						24																		
W							25																	
X								26																
Y									27															
Z										28														
											29													
												30												
													31											
														32										
															33									
																34								
																	35							
																		36						

North 206,711.33 Elev. _____

East 464,432.32

Hor. Datum _____ Vert. Datum _____

LATITUDE _____ ELLIPS. HT. _____

LONGITUDE _____

GPS (X) _____ TRAVERSE (X) _____

BASED ON THE FOLLOWING CONTROL:

PLACE MONUMENT SYMBOL AT PROPER LOCATION ON ABOVE INDEX

CORNER MONUMENT

WITNESS MONUMENT

(a)

BEARINGS ARE BASED ON:

FIELD BOOK _____ PAGE # _____

SHEET 1 OF 5

SHOW A PLAN VIEW DRAWING DEPICTING THE CORNER MONUMENT AND SURROUNDING PHYSICAL FEATURES, INCLUDING THE EXCAVATION AREA AND DEPTH.

PLANNING & ZONING COMMITTEE ADOPTED THE ABOVE FORM ON 12/2/1982

CORNER CODE v-1

BE601

(B) Describe any record evidence, monument evidence, occupational evidence, testimonial evidence or any other material evidence you considered, and whether the monument was found or placed.

1833 SEP MULLETT NORTH ON EAST SIDE SECTION 36.

297' LEAVE MARSH
1217.04' BLACK OAK 12 IN DIAMETER
1650' ENTER MARSH
2640 SET QUARTER SECTION POST BUR OAK 10 S34W 2.81; NO OTHER
4290' LEAVER MARSH.
5280 SET POST CORNER SECTIONS 25&36. BUR OAK 13 S26 1/2W
67.32' & BUR OAK 20 N27W 52.8'. VAR 7-00

1834 HARRISON WEST BETWEEN SECTIONS 30 & 31 ON RAND.

495' BROOK 6.6' CROSSES S.W.
2640 TEMP 1/4 SEC. COR
2838' BROOK 9.24' CROSSES S.E.
5217.3 INTERSECTED WEST BOUNDARY 10.56' SOUTH OF POST &
ESTABLISHED COR TO SEC 30 & 31. BEARINGS BURR OAK 30
N15E 159 & BUR OAK 18 S29E 29.

EAST COR EAST BET 30 & 31
2577.3' QUARTER SEC COR.
"MARKED BTS"

5219.94' SEC. COR.

1859 BELOIT TOWN ROAD RECORDS BK 1 PG 101 WIDTH OF FOUR RODS THE
SECTION LINE TO BE THE CENTER OF SAID HIGHWAY COMMENCING AT THE SE
COR OF SEC 27 AND RUNNING THENCE WEST FOUR MILES TO THE SW COR OF
SEC 30.

1871 COLLINS-NEWARK REMONUMENTATION NOTES. NORTH ON EAST LINE SEC 36
VAR 6.

2662.44' INTERSECTED 1/4 LINE 7.92' EAST OF CORNER. SET 1/4 STONE
IN PLACE OF LARGE STONE IN CENTER OF HIGHWAY AGREEING
WITH STUMPS OF WITNESS TREES. CORRECTED VAR 5-49.
CONTINUED NORTH VAR 6

5326.20 SET STONE FOR CORNER SECTIONS 25 & 36 BY STUMPS OF
WITNESS TREES.

EAST BETWEEN 25 & 36 VAR 6-30

2649.24' INTERSECTED 1/4 LINE 7.92' SOUTH OF CORNER SET 1/4 STONE
IN PLACE OF STAKE SET BY MESSER. CORRECTED
VARIATION 6-19'. CONTINUED EAST VARIATION 7
5286.6' SECTION COR.

NORTH ON EAST LINE OF VAR 5 VAR 6.

2663.76 INTERSECTED 1/4 LINE 13.86' WEST OF CORNER. SET 1/4
STONE IN PLACE OF OLD STAKE. CORRECTED VARIATION 6-18.
CONTINUED NORTH VARIATION 6.

5330.82 INTERSECTED SECTION LINE 52.8/' WEST OF CORNER SET STONE
FOR CORNER SECTIONS 24 & 25 BY WITNESS TREES. CORRECTED
VARIATION 7-09'

1931 SUNNY VOL 3 PG 189 INCOMPLETE RECORD SEEMS TO INDICATE THAT SEC
LINE OF SEC 30 & 31 BELOIT TWP JOGS 5.10 TO 16 LKS. DUG BUT FD
NOTHING SOUTH OF SE COR SEC 25.

1957 BATTERMAN VOL 3 PG 530 SPIKE & REFERENCED SAME @ SE COR SEC 25

1957 SHIMEALL FIELD BK #18 PG 32 & 33. AT SE COR SEC 25 FOUND 8X10"
LIMESTONE 1.4' DEEP & REFERENCED SAME. CALLS FOR BATTERMAN'S
CORNER AS A SPIKE & 11.45 EAST 13.83 BETWEEN CORNERS. CALLS FOR
2662.0 TO E 1/4 COR SEC 36 & 2662.0 TO E 1/4 COR SEC 25.

1963 SHIMEALL VOL 3 PG 530 FOUND STONE AT NE COR SEC 36 NEWARK. SET
PIPE AND REFERENCED SAME. CALLS FOR BATTERMAN CORNER 11.45 WEST &
8.02 BETWEEN CORNERS. NOTE

1969 VOL 3 PG 530 NOTE - AT NE COR SEC 36 SET MON BOX AT STONE.

1969 BATTERMAN VOL 4 PG 383 AT NE COR SEC 36 MON BOX OVER 1" PIPE &
REFERENCED SAME. WPL N/S 187,706/98; E/W 2,234,635.33. NOTE ADDED
STATES CORNER IS ON NORTH EDGE OF PAVEMENT.

1959 BATTERMAN VOL 4 PG 6 REFERENCED CORNER & VOIDED OUT. ✓-

1975 WPL MAP #13184 & 6044 CALLS FOR N 187,704.476;E/W 2,234,634.040
NAD 27. 2622.66 TO S 1/4 COR SEC 30, 5329.13 (BARNES 5328.07) TO
NW COR SEC 30, 2641.16 TO W 1/4 COR SEC 31, ANGLE OF 90-40-07
(BARNES 90-42- 27) FROM NW COR SEC 30 TO S 1/4 COR SEC 30.
1976 BARNES VOL 5 PG 130 AT NE COR SEC 36 FD C.I. BOX & REFERENCED
SAME.
1983 LEE CSM VOL 11 PG 333 LEGEND CALLS FOR C.I. MON.
1984 LEE CSM VOL 11 PG 462 LEGEND CALLS FOR C.I. MON.

AT NE COR SEC 36 FOUND PIPE IN MON BOX. 1.5' SOUTH OF NORTH EDGE OF
PAVEMENT. THIS IS IN HARMONY WITH TIES AND SHIMEALL'S FIELD NOTES AND
HIS CALL TO BATTERMAN'S ORIGINAL PIN.

C) Was the corner restored through acceptance of (1) an obliterated
evidence location, or, (2) a found perpetuated location?
AT THE NE COR SEC 36 ACCEPTED FOUND PERPETUATED LOCATION OF SHIMEALL'S
LOCATION OF THE CUT LIMESTONE. ESTABLISHED THE NW COR SEC 31 AT RECORD
DISTANCE & ON LINE WITH THE NE COR SEC 36 AND THE W 1/4 COR SEC 36.
DID NOT PLACE MONUMENT. THIS IS BASED ON THE ENCLOSED SHEET OF RECORD
EVIDENCE.

D) Describe any material discrepancy between the location of the
corner as restored or reestablished and the location of that corner as
previously restored or reestablished by distance and direction. Show
the discrepancy on the plan view drawing under (a), above. Show the
distances between the corner as previously restored or reestablished
and (1) the corner as restored or reestablished, and (2) to at least 4
of the witness monuments shown on the drawing in (a), above.

(E) Was the corner reestablished through lost corner proportionate
methods? If so, show the method, including the directions and
distances to other public land survey corners used as evidence or used
for proportioning the corner location.
YES

I, Donald Barnes, hereby certify that the corner points as identified
by the corner code index were, in a field survey on, JANUARY 9, 1998,
established, re-established, monumented, re-monumented, recovered or
restored as expressed below and in conformance with the regulations and
rules as required in the current manual of survey instructions of the
United States Department of Interior, Bureau of Land Management.

seal
Donald Barnes
01/09/1998

COUNTY SURVEYOR FILING DATA

Date of computer entry _____

Date microfilmed _____

Number of included sheets _____

CORNER CODE

EMBOSS LAND SURVEYOR SEAL

A-E 7.08 REQUIREMENT

V-1

HARRISON SURVEYED THE FOLLOWING ROCK COUNTY TOWNSHIPS IN THE FOLLOWING ORDER:

		FIELD NOTE JOGS		PLAT	ACTUAL
		1833	ON WEST BNDY		
MARCH 14-17	1833	AVON SOUTH HALF	NO	1COR	NO
OCT 28-NOV 4	1833	PORTER	FEW	ALL	ALL
NOV 5-11	1833	UNION	YES	ALL	ALL
NOV 27-DEC 1	1833	CENTER	MOST	ALL	ALL
DEC 1-7	1833	MAGNOLIA	FEW	ALL	ALL
DEC 14-18	1833	JANESVILLE WEST HALF	NO	NO	NO
DEC 20-27	1833	PLYMOUTH	YES	NO	NO
		1834			
JAN 26-FEB 2	1834	AVON NORTH HALF	NO	1COR	NO
MARCH 8-13	1834	NEWARK	NO	NO	NO
MARCH 13-18	1834	SPRING VALLEY	NO	ALL	ALL
MARCH 16-22	1834	BELOIT WEST HALF	FEW	NO	FEW
MARCH 23-28	1834	ROCK WEST HALF	NO	NO	NO
MARCH 31 - APR 4	1834	FULTON WEST HALF	NO	NO	NO

IN CENTER & PORTER TWP ALL THE CLOSURES OF THE WEST BOUNDARY WERE LARGE AND HARRISON SPECIFICALLY STATES SETTING A POST & RAISING A MOUND FOR MANY OF THE CORNERS. THE PLAT ALLS FOR JOGS AT ALL POINTS ALTHOUGH THE FIELD NOTES DO NOT STATE SO. THE PROBLEM IS THE FIELD NOTES, ORIGINAL PLAT, AND FIELD HISTORY ARE NOT ALWAYS IN HARMONY.

THE FOLLOWING RECORDS SHOW THAT THE ORIGINAL SURVEYOR, HARRISON, PLACED N/S JOGS AT THE SECTION CORNERS BETWEEN BELOIT & NEWARK TOWNSHIPS FROM THE SW COR SECTION 31 BELOIT TOWNSHIP TO THE NW CORNER OF SEC 19. THE ORIGINAL GOVERNMENT PLAT CALLS FOR ALL THE CORNERS BETWEEN NEWARK AND BELOIT TOWNSHIPS TO BE COMMON. THE QUESTION WHY DID HARRISON CHANGE HIS FIELD PROCEDURES FOR THE NW COR SEC 18 AND THE NW COR SEC 7. THE CLOSURES WERE GREATER THAN 10.56' AT THE SW COR SEC 30 WHERE HE ESTABLISHED THE CORNER. ALSO WHY DIDN'T THE ORIGINAL PLAT REFLECT HIS JOGS AS THEY DID IN PORTER & CENTER TOWNSHIPS.

521 E-1 NW COR SEC 7 (COMMON)
 1834 HARRISON FIELD NOTES WEST BETWEEN SEC 6 & 7
 5161.2 INT. WEST BOUNDARY 31.02' SOUTH OF POST MARKED SAME FOR COR TO SEC 6 & 7.

541 J-1 NW COR SEC 18 (COMMON)
 1834 HARRISON FIELD NOTES WEST BET 7 & 18
 5175.72 INT. WEST BOUNDARY AT NORTH EDGE OF MARSH 61.38' SOUTH OF POST MARKED SAME FOR 7 & 18

554 L-1 W 1/4 COR SEC 18 (JOG)
 1878 RUGER VOL 2 PG 260 SEE SURVEY SEC 13 LOCKE. CALLS FOR E 1/4 COR SEC 13 NORTH OF THE W 1/4 COR SEC 18. 2657.16 TO NW & SW CORNERS OF SEC 18. VERIFIED MAP JOG IN ORIGINAL COUNTY SURVEYOR'S VOL 2 PG 260 RECORDS.

561 N-1 NW COR SEC 19 (JOG)
 1834 HARRISON FIELD NOTES WEST BET. SECS 18 & 19 RAND.
 5197.5 INTERSECTED WEST BOUNDARY 59.4' SOUTH OF POST IN EAST EDGE OF MARSH} SET COR TO SEC 18 & 19 MARKED POST.
 1878 RUGER VOL 2 PG 260 SHOWS THE CORNER AS BEING SOUTH OF THE SE COR SEC 13 NEWARK TWP.

574 P-1 W 1/4 COR SEC 19 (JOG)
 NOTHING INDICATES A JOG.

581 R-1 SW COR SEC 19 (JOG)
 1834 HARRISON FIELD NOTES WEST BE. SECS 19 & 30 RAND.
 5208.72 INTERSECTED WEST BOUNDARY 50.16' SOUTH OF POST COR TREES TO 19 & 30 BUR OAK 8 N49E 29' & BUR OAK 9 S70E.

V-1

594 T-1 W 1/4 COR SEC 30 (JOG)
NOT RECORD INDICATING A JOG.

601 V-1 SW COR SEC 30 (JOG)

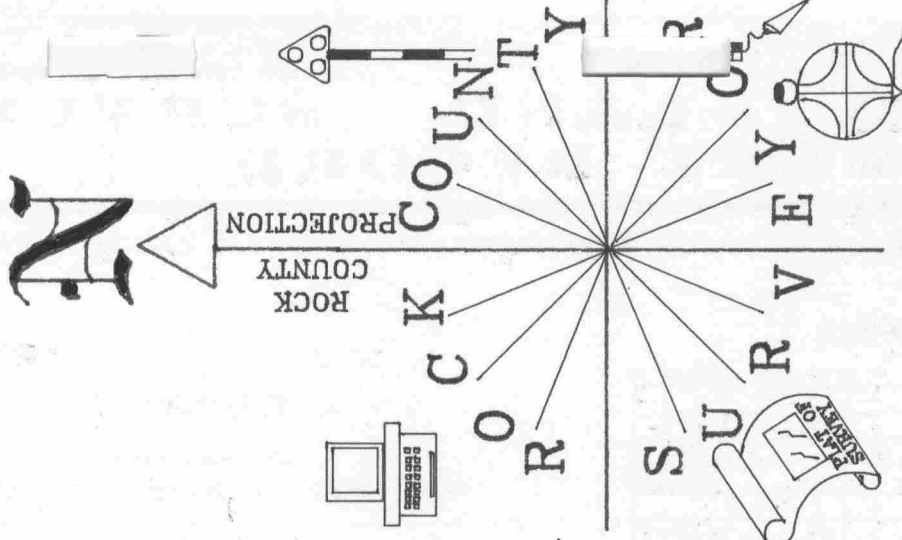
1834 HARRISON WEST BETWEEN SECTIONS 30 & 31 ON RAND.
5217.3 INTERSECTED WEST BOUNDARY 10.56' SOUTH OF POST &
ESTABLISHED COR TO SEC 30 & 31. BEARINGS BURR OAK 30 N15E
159 & BUR OAK 18 S29E 29

1931 SUNNY VOL 3 PG 189 INCOMPLETE RECORD SEEMS TO INDICATE THAT
SEC LINE OF SEC 30 & 31 BELOIT TWP JOGS 5.10 TO 16 LINKS.
DUG BUT FOUND NOTHING SOUTH OF SE COR SEC 25. AT SE COR SEC
25 FOUND 6X5 CUT STONE MON. OF SEC 25 & 36 NEWARK.

614 X-1 W 1/4 COR SEC 31 (JOG)

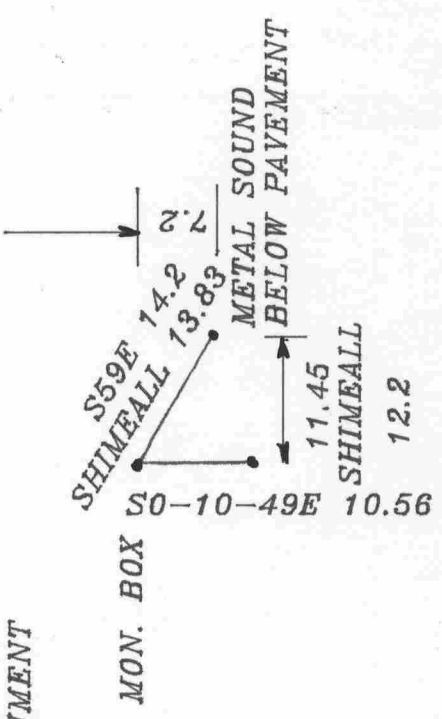
1959 BATTERMAN VOL 4 PG 6 SHOWS E 1/4 COR SEC 36 4.49' NORTH OF W
1/4 COR SEC 31. REFERENCED BOTH.

V-1

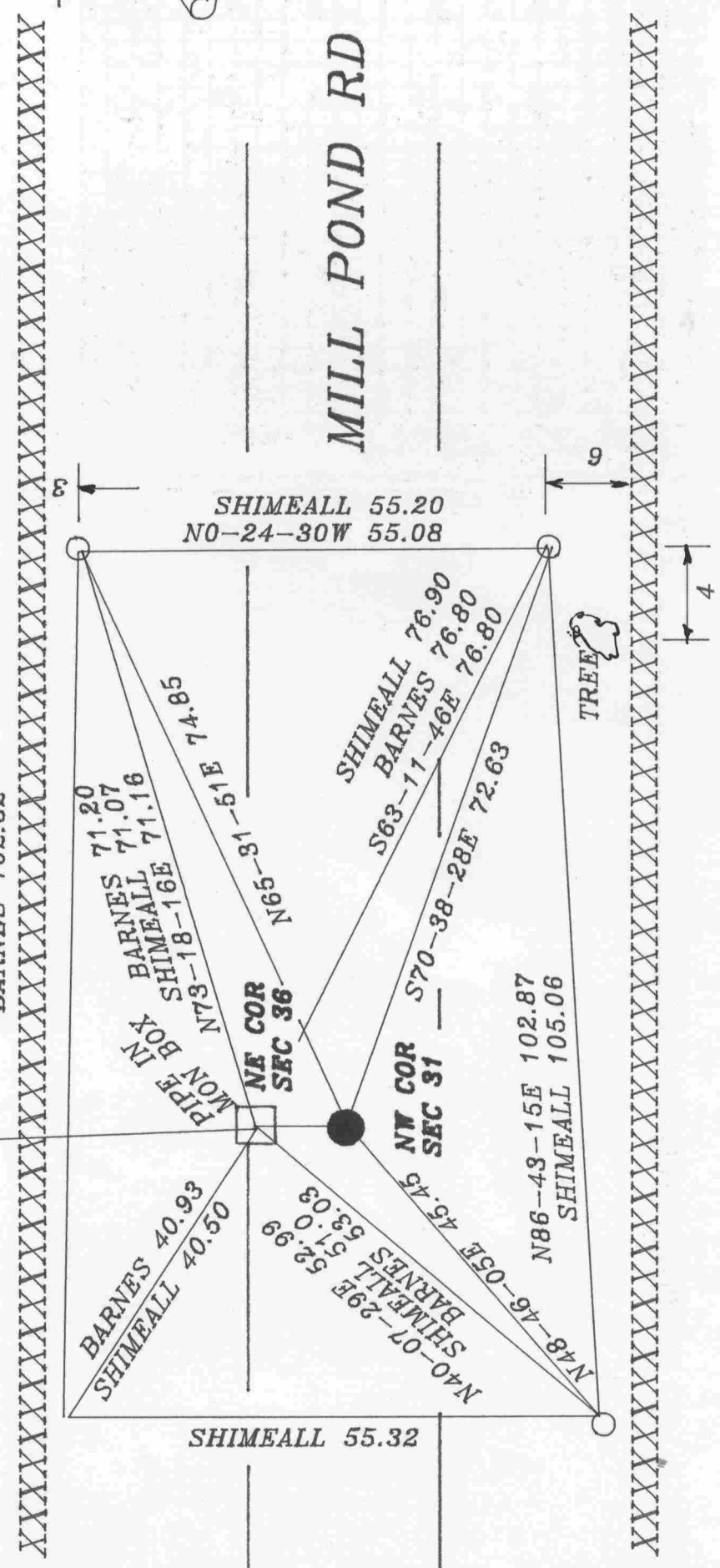


OBSERVATION SHEET # 1
 ○ FD 1" PIPE

MILL POND RD



GPS MONUMENT
 S1-37-10E 2808.76
 S2-17-43E 169.40
 SHIMEALL 103.68
 BARNES 102.32



Donald Barnes
 EMBOSSED SEAL
 1/13/98

V-1