

U.S. PUBLIC LAND SURVEY MONUMENT RECORD

For Public Land Survey Corners in:

T. 1N., R. 12E

CORNER CODE INDEX

WI ADMINISTRATIVE CODE A-E 7.08 REQUIREMENT

BELOIT TWP

TWP

ROCK COUNTY WI

IF AVAILABLE
ROCK COUNTY COORDINATES PREFERRED

A	1	2	3	4	5	6	7	8	9	10	11	12	13	14	15	16	17	18	19	20	21	22	23	24	25
B	6																								
C		5																							
D			4																						
E				3																					
F					2																				
G						1																			
H	1	8	9	10	11	12																			
I																									
J																									
K	18	17	16	15	14	13																			
L																									
M																									
N																									
O																									
P	19	20	21	22	23	24																			
Q																									
R																									
S																									
T	30	29	28	27	26	25																			
U																									
V																									
W																									
X	31	32	33	34	35	36																			
Y																									
Z																									

PLACE MONUMENT SYMBOL AT PROPER LOCATION ON ABOVE INDEX

North _____ Elev. _____

East _____

Hor. Datum _____ Vert. Datum _____

LATITUDE _____ ELLIPS. HT. _____

LONGITUDE _____

GPS (X) _____ TRAVERSE (X) _____

BASED ON THE FOLLOWING CONTROL:

CORNER MONUMENT

WITNESS MONUMENT

(a)

BEARINGS ARE BASED ON:

FIELD BOOK _____ PAGE # _____

SHEET 1 OF 2

SHOW A PLAN VIEW DRAWING DEPICTING THE CORNER MONUMENT AND SURROUNDING PHYSICAL FEATURES, INCLUDING THE EXCAVATION AREA AND DEPTH.

PLANNING & ZONING COMMITTEE ADOPTED THE ABOVE FORM ON 12/2/1982

CORNER CODE V-7

BE604

(B) Describe any record evidence, monument evidence, occupational evidence, testimonial evidence or any other material evidence you considered, and whether the monument was found or placed.

1834 HARRISON EAST ON RAND. BET. 29 & 32
528 LEAVE TIMBER & ENTER MARSH
2640 TEMPY 1/4 POST
2970 LEFT MARSH & ENTER TIMBER
4620 LEFT TIMBER & ENTER PRAIRIE
5273.4 INT. EAST BOUNDARY 10.56' NORTH OF POST
COR WEST
2294.82 BURR OAK 12
2636.7 QUARTER SEC COR. BURR OAK 10 S71E 231', BURR OAK 14
N35E 251.46
5273.4 SEC COR
1931 SUNNY VOL 3 PG 189 DUG 4X6 HOLE 3' DEEP FOUND NOTHING TO INDICATE
1/4 CORNER.
1952 DOT STH 81 2649.00 TO SW COR SEC 29 & 2655.00 TO SE COR SEC 29
1976 BARNES VOL 5 PG 165 DUG 3.5' DEEP & FOUND 4X4X6 CUT STAKE & WOOD
REMAINS. SET ALUM MON. & REFERENCED SAME. 1.5' NORTH OF E/W
CENTER OF PVMT.
1989 KREBS MAP #12157 2653.84 TO SE COR SEC 29.

FOUND ALUM. MON.

C) Was the corner restored through acceptance of (1) an obliterated evidence location, or, (2) a found perpetuated location?
ACCEPTED FOUND LOCATION.

D) Describe any material discrepancy between the location of the corner as restored or reestablished and the location of that corner as previously restored or reestablished by distance and direction. Show the discrepancy on the plan view drawing under (a), above. Show the distances between the corner as previously restored or reestablished and (1) the corner as restored or reestablished, and (2) to at least 4 of the witness monuments shown on the drawing in (a), above.

(E) Was the corner reestablished through lost corner proportionate methods? If so, show the method, including the directions and distances to other public land survey corners used as evidence or used for proportioning the corner location.
NO

I, Donald Barnes, hereby certify that the corner points as identified by the corner code index were, in a field survey on, established, re-established, monumented, re-monumented, recovered or restored as expressed below and in conformance with the regulations and rules as required in the current manual of survey instructions of the United States Department of Interior, Bureau of Land Management.

seal
Donald Barnes
Oct 16, 1998

EMBOSS LAND SURVEYOR SEAL

COUNTY SURVEYOR FILING DATA

Date of computer entry _____

Date microfilmed _____

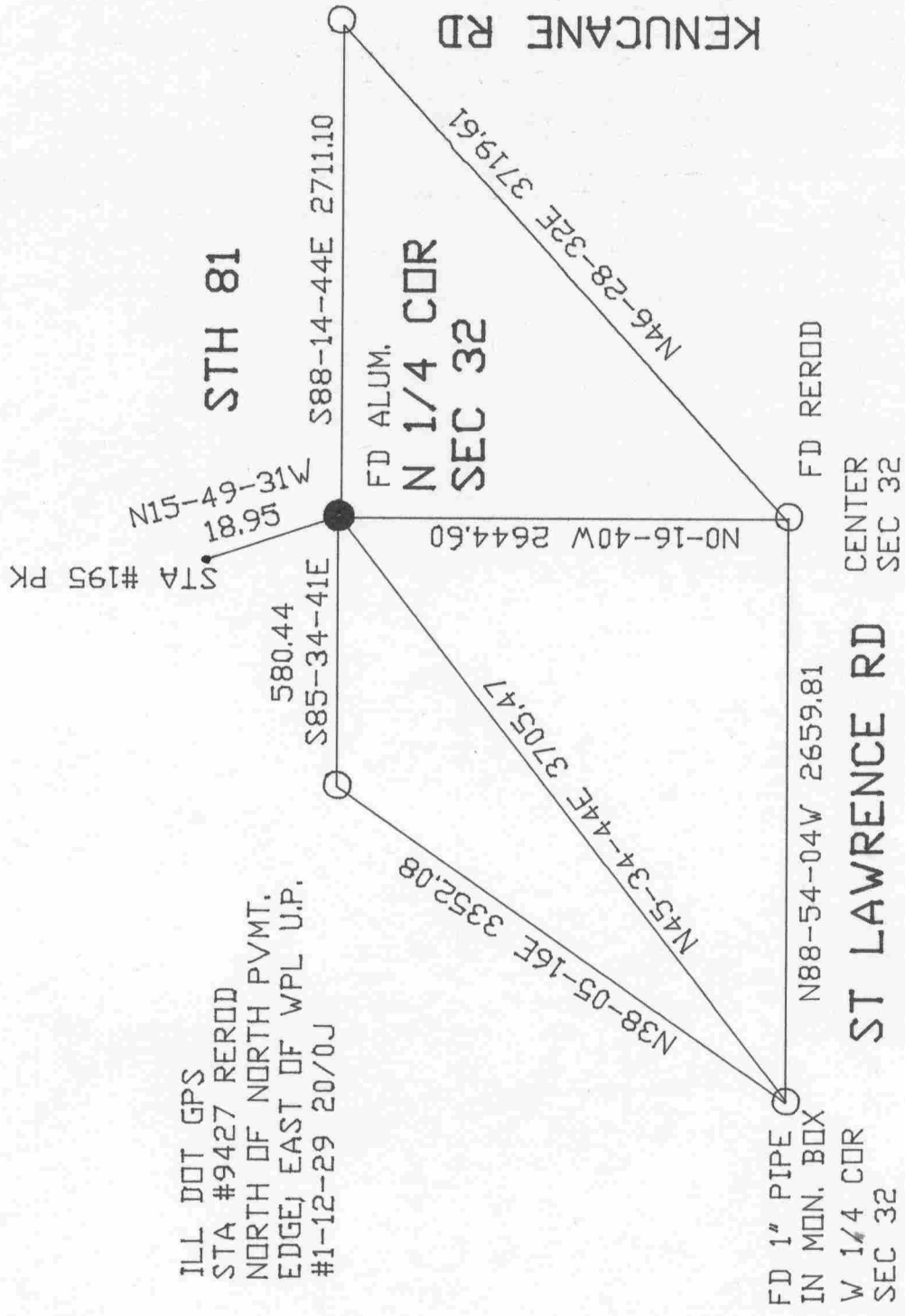
Number of included sheets _____

CORNER CODE

A-E 7.08 REQUIREMENT

V-7

Donald Barnes
Oct 19, 1998



STA #3146 REROD
WI DOT GPS
5 SOUTH OF PVMT. EDGE
EAST OF INT.
4.6 NORTH OF WI DOT
SURVEY MARKER SIGN.

ILL DOT GPS
STA #9427 REROD
NORTH OF NORTH PVMT.
EDGE, EAST OF WPL U.P.
#1-12-29 20/0J

FD 1" PIPE
IN MON. BOX
W 1/4 COR
SEC 32

