

U.S. PUBLIC LAND SURVEY MONUMENT RECORD

For Public Land Survey Corners in:

WI ADMINISTRATIVE CODE A-E 7.08 REQUIREMENT

T. 1 N., R. 12 E

CORNER CODE INDEX

A	1	2	3	4	5	6	7	8	9	10	11	12	13	14	15	16	17	18	19	20	21	22	23	24	25
B																									
C	6																								
D		5																							
E			4																						
F				3																					
G	1																								
H		8																							
I			9																						
J				10																					
K					11																				
L						12																			
M	18																								
N		17																							
O			16																						
P				15																					
Q					14																				
R						13																			
S							12																		
T								11																	
U									10																
V										9															
W											8														
X												7													
Y													6												
Z														5											

BELOIT TWP
ROCK COUNTY WI

IF AVAILABLE
ROCK COUNTY COORDINATES PREFERRED

North _____ Elev. _____

East _____

Hor. Datum _____ Vert. Datum _____

LATITUDE _____ ELLIPS. HT. _____

LONGITUDE _____

GPS (X) _____ TRAVERSE (X) _____

BASED ON THE FOLLOWING CONTROL:

PLACE MONUMENT SYMBOL AT PROPER LOCATION ON ABOVE INDEX

CORNER MONUMENT

WITNESS MONUMENT

(a)

BEARINGS ARE BASED ON:

FIELD BOOK _____ PAGE # _____

SHEET 1 OF 3

SHOW A PLAN VIEW DRAWING DEPICTING THE CORNER MONUMENT AND SURROUNDING PHYSICAL FEATURES, INCLUDING THE EXCAVATION AREA AND DEPTH.

PLANNING & ZONING COMMITTEE ADOPTED THE ABOVE FORM ON 12/2/1982

CORNER CODE T-17

BE598

(B) Describe any record evidence, monument evidence, occupational evidence, testimonial evidence or any other material evidence you considered, and whether the monument was found or placed.

- 1857 HUBART VOL 1 PG 120 N88-20E 2534.40 TO CENTER OF SEC 26 & N2E 2643.62 TO NW COR SEC 26.
- 18?? MAP #7098 CALLS FOR A BEARING OF THE EAST LINE OF THE SE 1/4 OF SEC 27 AS N0-45W AND THE VAR IS 5-44 EAST OF TRUE NORTH.
- 1911 CALDWELL STARR'S ADD BK 7 PG 55 MAP CALLS FOR IRON STAKE AT THE E 1/4 COR OF SEC 27 & THE EAST LINE OF THE NE 1/4 OF SEC 27.
- 1946 BATTERMAN DICK'S SUB. BK 13 PG 18 CALLS FOR CORNER BUT DOES NOT STATE TYPE OF MONUMENT.
- 1947 BATTERMAN HILLS SUBDIVISION BK 14 PG 14 SUB STARTS N89-24W 417.39 OF THE E 1/4 COR SEC 27. STATES NOTHING ABOUT MONUMENT.
- 1948 BATTERMAN OSBORNS SUBDIVISION OF PLEASANT VIEW ADD. BK 14 PG 34 FOUND PIN. SUB STARTS 86.79 WEST OF E 1/4 COR SEC 27.
- 1950 BATTERMAN MAP #6004 CALLS FOR THE SOUTH LINE OF THE NW 1/4 OF SEC 27 AND THE CENTER OF SEC 27.
- 1954 BATTERMAN SUBDIVISION BK 16 PG 27 PURVIANCE ADD. 2643.97 TO CENTER OF SEC 27. AT THE CENTER LINE OF MCKINLEY AVE. THE CENTER OF PAVEMENT IS 7.26 SOUTH OF THE E/W CENTER LINE OF SEC 27. THE ANGLE AT THE CENTER OF SEC 27 FROM THE E 1/4 COR SEC 27 ALONG THE WEST LINE OF THE SE 1/4 OF SEC 27 IS 89-42-10.
- 1956 BATTERMAN MAP #8511 CALLS FOR PIPE IN MON. BOX. ANGLE OF 89-18 AT E 1/4 COR SEC 27 FROM ALONG E/W CENTERLINE SEC 27 TO EAST LINE OF NE 1/4 OF SEC 27, ANGLE, ANGLE OF 90-37-20 AT E 1/4 COR SEC 27 ALONG EAST LINE OF SE 1/4 SEC 27 TO E/W CENTER LINE OF SEC 27, WEST 33 TO PIPE ON E/W CENTERLINE, FROM PIPE IN MON BOX AT NW COR OF INTERSECTION 36.65 OF EAST LINE OF NE 1/4 OF SEC 27, NORTH 132 FROM E 1/4 COR SEC 27 TO PIPE ON SECTION LINE, FROM E 1/4 COR 27 EAST 12.4 TO PIPE, & FROM 1/4 COR SEC 27 EAST 33.00 TO PIPE ON E/W CENTER LINE OF SEC 26.
- 1956 BATTERMAN SUBDIVISION GARFIELDS AVE. SUB BK 17 PG 27 SHOWS TIE TO SUBDIVISION. 2643.97 FROM CENTER OF SECTION TO E 1/4 COR SEC 27. CALLS FOR THE STRAIGHT LINE BETWEEN EXISTING MONUMENTS AT THE CENTER OF THE SECTION AND THE EAST 1/4 COR SEC 27 IS 7.26 NORTH OF THE CENTER OF THE WHIPPLE ROW. DOES NOT CALL FOR TYPE OF MONUMENT.
- 1957 SHIMEALL SUBDIVISION SHIRLEY'S SUB BK 19 PG 11 FOUND PIN N89-44-30W 1324.00 FROM E 1/4 COR SEC 27 IS AN EXISTING PIPE.
- 1958 SHIMEALL SUBDIVISION SOUTHWORTH SUB BK 19 PG 20 FOUND PIN.
- 1959 SHIMEALL SUBDIVISION BALMORAL HEIGHT BK 18 PG 3 FOUND SQUARE PIN, ANGLE AT THE E 1/4 COR SEC 27 FROM THE EAST LINE OF THE SE 1/4 OF SEC 27 TO THE NORTH LINE OF THE SE 1/4 OF SEC 27 IS 90-37-45.
- 1959 SHIMEALL SUBDIVISION KNOLL'S SUB BK 20 PG 2 FOUND PIN 2643.97 TO CENTER OF SEC 27. FOUND 1X30 PIPE AT CENTER OF SECTION 27. ANGLE OF 89-42-10 AT THE CENTER OF SEC 27 FROM THE E 1/4 COR SEC 27 TO THE WEST LINE OF THE SE 1/4 OF SEC 27.
- 1964 BATTERMAN CSM V 1 PG 94 FOUND SQUARE PIN
- 1980 HEIDT CSM V 10 PG 42 FOUND CONC. MON.
- 1980 COMBS MAP #4961 FOUND PIN SURVEY STARTS NORTH 132.0 FROM THE 1/4 CORNER.

FOUND SQUARE STAKE IN ROUND MONUMENT BOX. ALSO FOUND ROUND PIN IN BOX.

C) Was the corner restored through acceptance of (1) an obliterated evidence location, or, (2) a found perpetuated location?
ACCEPTED FOUND SQUARE STAKE IN ROUND MONUMENT BOX.

Donald Barnes
12-16-97

T-17

D) Describe any material discrepancy between the location of the corner as restored or reestablished and the location of that corner as previously restored or reestablished by distance and direction. Show the discrepancy on the plan view drawing under (a), above. Show the distances between the corner as previously restored or reestablished and (1) the corner as restored or reestablished, and (2) to at least 4 of the witness monuments shown on the drawing in (a), above.
THERE IS ALSO A ROUND PIN AS SHOWN IN THE DIAGRAM.

(E) Was the corner reestablished through lost corner proportionate methods? If so, show the method, including the directions and distances to other public land survey corners used as evidence or used for proportioning the corner location.
NO

I, Donald Barnes, hereby certify that the corner points as identified by the corner code index were, in a field survey on, December, 1997, established, re-established, monumented, re-monumented, recovered or restored as expressed below and in conformance with the regulations and rules as required in the current manual of survey instructions of the United States Department of Interior, Bureau of Land Management.

COUNTY SURVEYOR FILING DATA

Date of computer entry _____

Date microfilmed _____

Number of included sheets 2

CORNER CODE

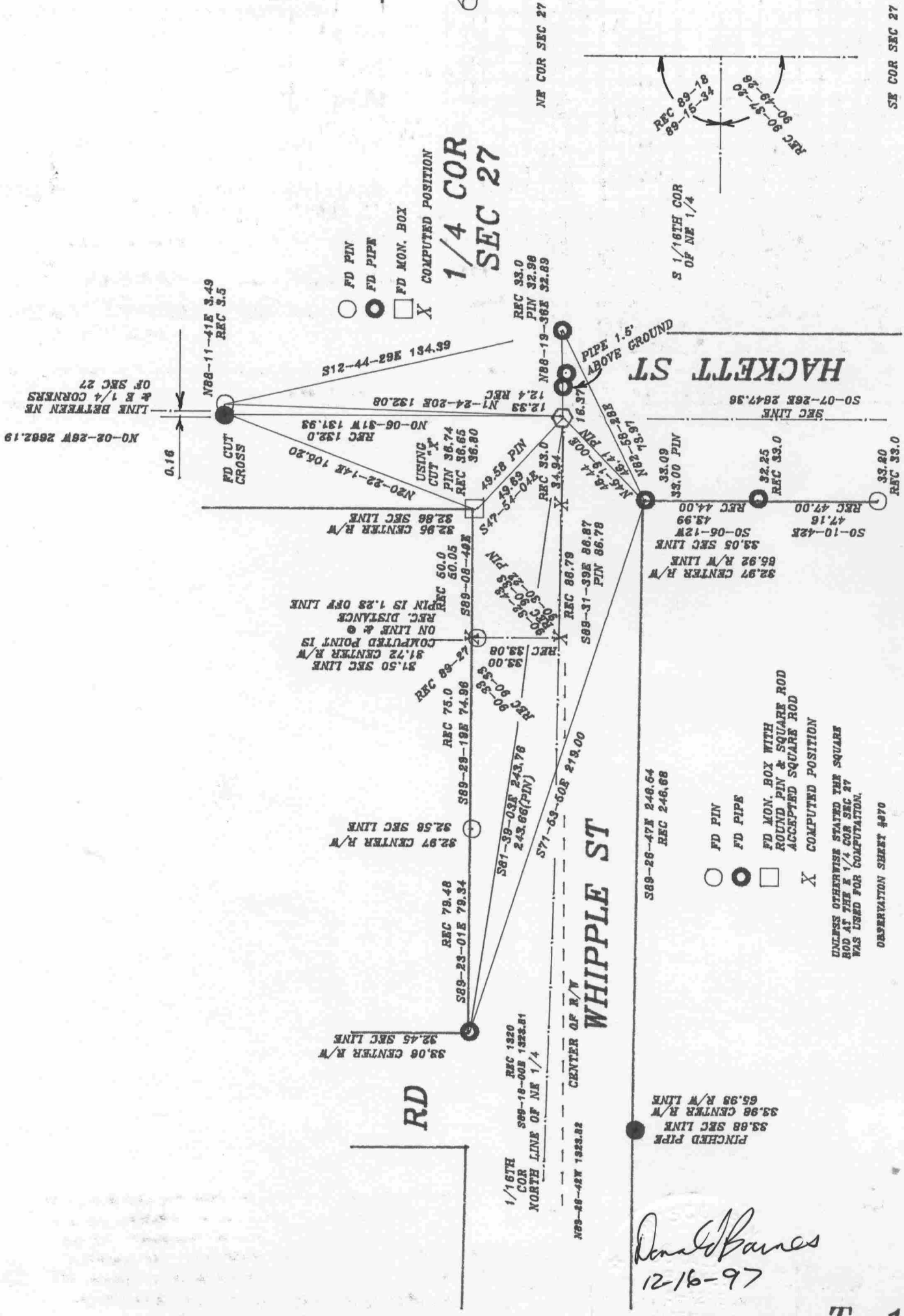
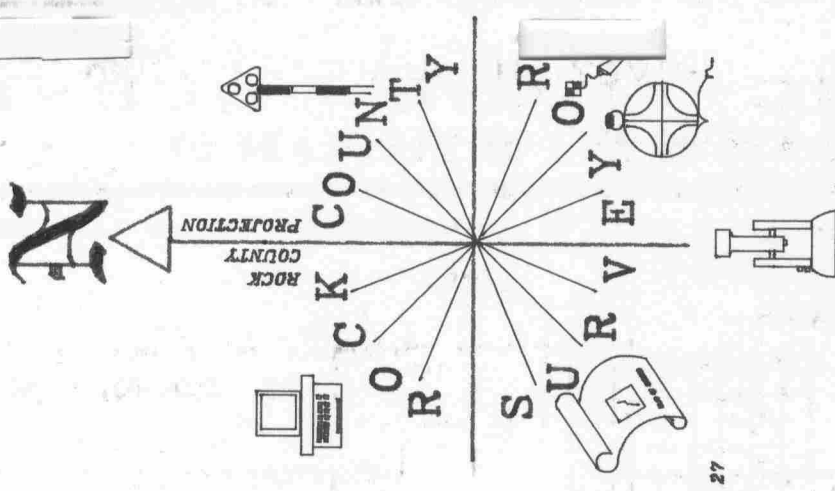
seal

Donald Barnes
12-16-97

EMBOSS LAND SURVEYOR SEAL

A-E 7.08 REQUIREMENT

T-17



Donald Barnes
12-16-97

EMBOSSED SEAL

T-17