

U.S. PUBLIC LAND SURVEY MONUMENT RECORD

For Public Land Survey Corners in:

WI ADMINISTRATIVE CODE A-E 7.08 REQUIREMENT

T. 1 N., R. 2 E

CORNER CODE INDEX

A	1	2	3	4	5	6	7	8	9	10	11	12	13	14	15	16	17	18	19	20	21	22	23	24	25
B																									
C	6																								
D																									
E																									
F																									
G	7																								
H																									
I																									
J																									
K	18																								
L																									
M																									
N																									
O	19																								
P																									
Q																									
R																									
S	30																								
T																									
U																									
V																									
W																									
X	31																								
Y																									
Z																									

BELOIT TWP
ROCK COUNTY WI

IF AVAILABLE
ROCK COUNTY COORDINATES PREFERRED

North 214,353.03 Elev. _____

East 485,582.36

Hor. Datum COUNTY Vert. Datum _____

LATITUDE _____ ELLIPS. HT. _____

LONGITUDE _____

GPS (X) _____ TRAVERSE (X) _____

BASED ON THE FOLLOWING CONTROL:

PLACE MONUMENT SYMBOL AT PROPER LOCATION ON ABOVE INDEX

CORNER MONUMENT

WITNESS MONUMENT

(a)

BEARINGS ARE BASED ON:

FIELD BOOK _____ PAGE # _____

SHEET 1 OF 4

SHOW A PLAN VIEW DRAWING DEPICTING THE CORNER MONUMENT AND SURROUNDING PHYSICAL FEATURES, INCLUDING THE EXCAVATION AREA AND DEPTH.

PLANNING & ZONING COMMITTEE ADOPTED THE ABOVE FORM ON 12/2/1982

CORNER CODE P-17

BE578

(B) Describe any record evidence, monument evidence, occupational evidence, testimonial evidence or any other material evidence you considered, and whether the monument was found or placed.

- 1834 HARRISON NORTH BETWEEN SECTIONS 22 & 23
2640 QUARTER SEC. COR NEAR THE SOUTHERN EDGE OF SMALL SLASH. SET POST & RAISED MOUND
3036 LEFT SLASH
5280 SET CORNER TO SECS 14,15,22 & 23 ON GROUND SLOPING S.W. POST & RAISED MOUND.
- 1857 HOBART VOL 1 PG 120 2665.74 N2E TO THE NW COR SEC 23, S2W 2649.90 TO SW COR SEC 23, & S2W 2643.63 TO W 1/4 COR SEC 26. STATES NOTHING ABOUT MONUMENT. BEARINGS INDICATE NW, W 1/4, SW CORNERS OF SEC 23 AND THE W 1/4 CORNER OF SEC 26 ARE ON LINE.
- 1940 BATTERMAN SUB BK 21 PG 1 RICES COUNTRY ACRES. DOES NOT CALL FOR CORNER BUT CALLS FOR 2622.83 FROM SW COR SEC 23 TO LOT & 891.6 FROM LOT TO CENTER OF AFTON RD.
- 1950 BATTERMAN SUB BK 15 PG 28 RESUB OF LOT 1 & PART OF LOT 2 FAIR OAKS. SHOWS W 1/4 COR SEC 23 BUT STATES NOTHING ABOUT IT. CALLS FOR THE E/W CENTER LINE OF SEC 23 STARTING FROM THE E 1/4 COR SEC 23.
- 1956 SHIMEALL SUB BK 18 PG 11 BIG HILL MANOR CALLS FOR W 1/4 COR SEC 23 BUT STATES NOTHING ABOUT IT. ANGLE OF 89-51-30 AT THE NW COR SEC 23 FROM THE NORTH LINE TO THE WEST LINES OF SECTION 23.
- 1958 SHIMEALL MAP #462 1313.85 FROM W 1/4 COR SEC 22 TO S 1/16TH CORNER OF THE NW 1/4 OF SEC 22 AND ANGLE OF 89-31-30 AT W 1/4 COR SEC 22 FROM E/W CENTER LINE OF SEC 22 TO SW COR OF SEC 22. DOES NOT CALL FOR THE E 1/4 COR SEC 22.
- 1958 BATTERMAN MAP #460 ANGLE OF 89-51 AT NW COR SEC 23 FROM NORTH TO WEST LINES OF SEC 23.
- 1960 BATTERMAN SUB BK 21 PG 1 CARROLL HEIGHTS CALLS FOR W 1/4 COR SEC 23 BUT STATES NOTHING ABOUT IT. STARTING AT THE SW COR SEC 23 NORTH ALONG SECTION LINE 2622.83 THENCE S89-51E ALONG NORTH LINE OF RICES COUNTRY ACRES.
- 1979 LEE SUB BK 30 PG 27 DIAMOND ACRES CALLS FOR WEST LINE SEC 23 BUT STATES NOTHING ABOUT W 1/4 COR SEC 23. 2623.00 FROM SW COR SEC 23 TO NW COR OF HACKETT ST WHICH IS THE NORTH LINE OF SUBDIVISION.
- 19?? CITY OF БЕЛОIT MONUMENTATION MAP. CALLS FOR 33.82 FROM THE W 1/4 COR SEC 23 TO THE NORTH LINE OF DIAMOND ACRES SUB.

FOUND 1" PIPE 0.4' ABOVE THE GROUND ON THE N/S FENCE LINE THAT IS WITHIN 0.85' N/S OF EQUAL DISTANCE FROM THE NW & SW CORNERS OF SEC 23 AND WITHIN .08' OF A STRAIGHT LINE BETWEEN THE NW AND SW CORNERS. DID NOT FIND ANY RECORD OF PIPE. PLACED CARSONITE POST ON EAST SIDE OF PIPE. PLACED POLY. MONUMENT AT LOCATION DESCRIBED IN C.

C) Was the corner restored through acceptance of (1) an obliterated evidence location, or, (2) a found perpetuated location?
RESTORED CORNER THROUGH ACCEPTANCE OF OBLITERATED EVIDENCE LOCATION. PRORATED HOBART'S 1859 DISTANCES. PLACED THE CORNER ON LINE WITH THE SW CORNER OF SEC 23 AND THE FOUND PIPE IN CONCRETE WHICH IS S0-03-57W 27.40. THIS IS IN HARMONY WITH SHIMEALL'S ANGLE OF 89-31-30 AT THE W 1/4 COR SEC 22 FROM THE S 1/16TH CORNER OF THE NW 1/4 OF SEC 22 TO THE SW CORNER OF SEC 22. MANY SUBDIVISIONS START AT THE SW CORNER OF SECTION 23 THENCE NORTH ALONG THE SECTION LINE TO THE FOUND PIPE IN CONCRETE AT THE SUBDIVISION AND THEN CONTINUE EASTERLY ALONG THE NORTH LINE OF THE SUBDIVISION.

Donald Barnes
Nov 29, 1997

P-17

D) Describe any material discrepancy between the location of the corner as restored or reestablished and the location of that corner as previously restored or reestablished by distance and direction. Show the discrepancy on the plan view drawing under (a), above. Show the distances between the corner as previously restored or reestablished and (1) the corner as restored or reestablished, and (2) to at least 4 of the witness monuments shown on the drawing in (a), above.
IT APPEARS THAT WHO EVER PLACED THE 1" PIPE WHICH IS N3-02-10E 7.19' OF THE CORNER INTENDED IT TO BE THE 1/4 CORNER.

(E) Was the corner reestablished through lost corner proportionate methods? If so, show the method, including the directions and distances to other public land survey corners used as evidence or used for proportioning the corner location.

NO

I, Donald Barnes, hereby certify that the corner points as identified by the corner code index were, in a field survey on, November 1997, established, re-established, monumented, re-monumented, recovered or restored as expressed below and in conformance with the regulations and rules as required in the current manual of survey instructions of the United States Department of Interior, Bureau of Land Management.

Donald Barnes
NOV 25, 1997

COUNTY SURVEYOR FILING DATA

Date of computer entry _____

Date microfilmed _____

Number of included sheets 3

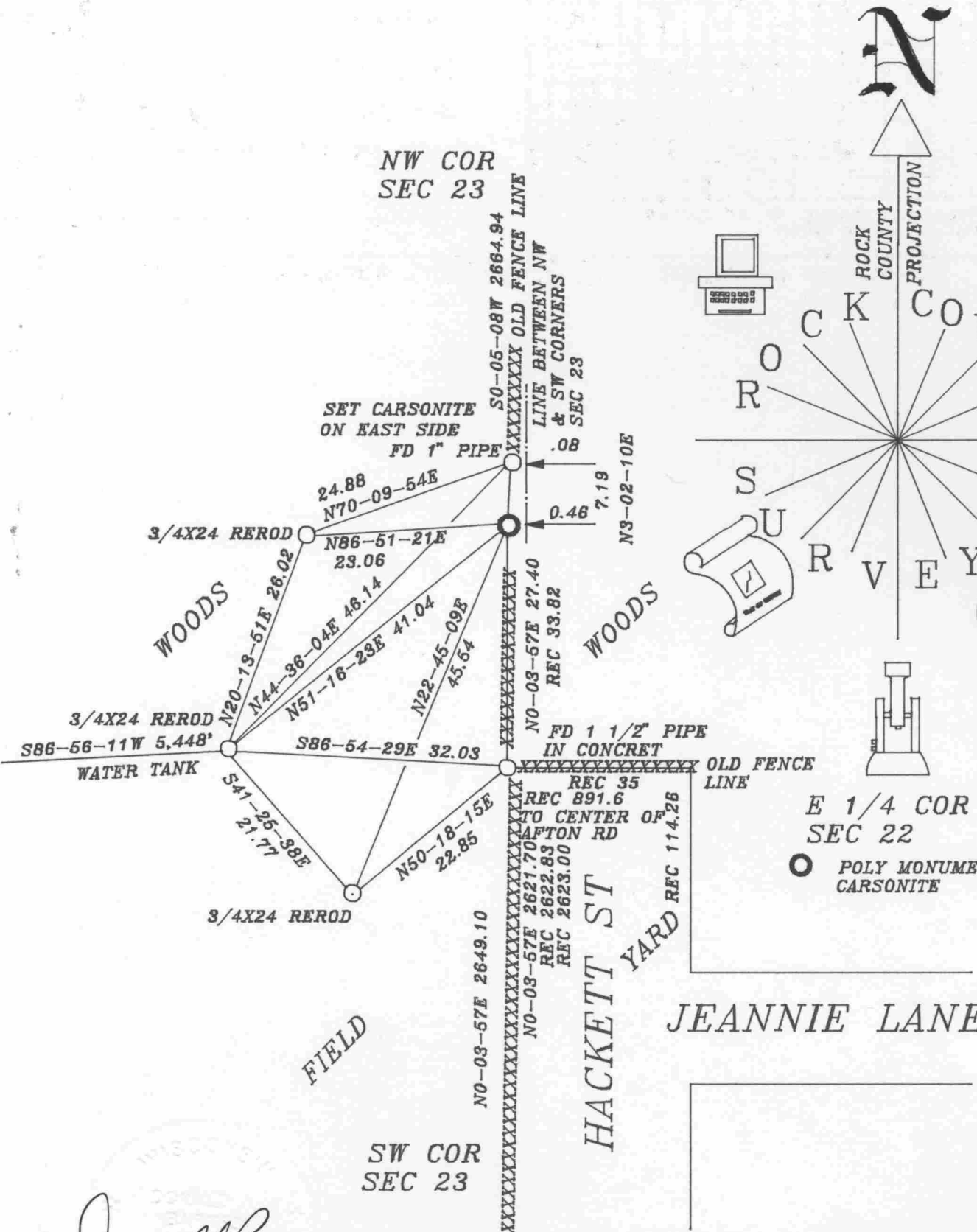
CORNER CODE

EMBOSS LAND SURVEYOR SEAL

A-E 7.08 REQUIREMENT

P17

NW COR
SEC 23



Donald Barnes
 EMBOSSED SEAL
 NOV 25, 1997

DIAMOND ACRES
 SUBDIVISION P-17

