

U.S. PUBLIC LAND SURVEY MONUMENT RECORD

For Public Land Survey Corners in:

WI ADMINISTRATIVE CODE A-E 7.08 REQUIREMENT

T. 1 N., R. 12 E

BELoit TWP

CORNER CODE INDEX

TWP

ROCK COUNTY WI

IF AVAILABLE
ROCK COUNTY COORDINATES PREFERRED

1	2	3	4	5	6	7	8	9	10	11	12	13	14	15	16	17	18	19	20	21	22	23	24	25
A																								
B	6																							
C		5																						
D																								
E																								
F																								
G	1																							
H		8																						
J																								
K																								
L	18																							
M		11																						
N																								
O																								
P	19																							
Q		20																						
R																								
S																								
T	30																							
U		29																						
V																								
W																								
X	31																							
Y		32																						
Z																								

North 214,653.72 Elev. _____

East 464,507.45

Hor. Datum COUNTY Vert. Datum _____

LATITUDE _____ ELLIPS. HT. _____

LONGITUDE _____

GPS (X) _____ TRAVERSE (X) _____

BASED ON THE FOLLOWING CONTROL:

PLACE MONUMENT SYMBOL AT PROPER LOCATION ON ABOVE INDEX

CORNER MONUMENT

WITNESS MONUMENT

(a)

BEARINGS ARE BASED ON: _____

FIELD BOOK _____ PAGE # _____

SHEET 1 OF 4

SHOW A PLAN VIEW DRAWING DEPICTING THE CORNER MONUMENT AND SURROUNDING PHYSICAL FEATURES, INCLUDING THE EXCAVATION AREA AND DEPTH.

PLANNING & ZONING COMMITTEE ADOPTED THE ABOVE FORM ON 12/2/1982

CORNER CODE P-1

BE574

(B) Describe any record evidence, monument evidence, occupational evidence, testimonial evidence or any other material evidence you considered, and whether the monument was found or placed.

1833 SEP MULLETT NORTH ON EAST SIDE SECTION 24

990' ENTER MARSH

1947 STREAM 5.28' CROSSES SE

1980 LEAVE MARSH

2640 SET QUARTER SECTION POST BUR OAK 12 S7W 69.3' & BUR OAK 8 N15W 24.42'. (E 1/4 COR SEC 24).

2805 ENTER WET PRAIRIE

5280 SET POST CORNER SECTIONS 13 & 24 IN WET PRAIRIE AND MADE MOUND, LAND EXCEPT MARSH ROLLING SECOND RATE., BLACK, WHITE, AND BUR OAK

1863 LOCKE VOL 1 PG 185 FD BT OLD STAKE 2667.72 TO CENTER OF SEC 24.

1871 COLLINS REMONUMENTATION NOTES. NORTH ON EAST LINE OF 24

VARIATION 6.

1320 CHANGED COURSE VARIATION 5-30.

1980 SPRING BOOK

2651.88 INTERSECTED 1/4 LINE 6.6' WEST OF CORNER. SET 1/4 STONE IN PLACE OF OLD STAKE AGREEING WITH WITNESS TREES. CORRECTED VARIATION 5-54.

CONTINUED NORTH. VARIATION 4-35

5305.08 SET STONE FOR CORNER. SECTIONS 13 & 24 IN CENTER OF HIGHWAY AND IN LINE WITH FENCES NORTH & SOUTH.

OCT 10 1871

1975 SPRAGUE MAP #427 N/S 195,688.189;E/W 2,234,621.43 N0-13-37W

2663.25 TO NW COR SEC 19, S0-19-55E 2654.61 TO SW COR SEC 19, & S88-58-41E 5166.22 TO E 1/4 COR SEC 19.

AT E 1/4 COR SEC 24 FOUND CUT LIMESTONE 0.6' ABOVE GROUND ON E/W FENCE LINE. PLACED MAGNETS ON NORTH & EAST SIDE & CARSONITE POST ON SOUTH SIDES OF STONE. DUE TO THE JOG AT THE NW AND SW CORNERS, THERE WILL BE A JOG AT THE W 1/4 COR SEC 19. DID NOT PLACE A MONUMENT.

C) Was the corner restored through acceptance of (1) an obliterated evidence location, or, (2) a found perpetuated location?

NO, BASED ON THE RECORDS ON THE ENCLOSED SHEET, I AM ESTABLISHING THE CORNER MIDWAY BETWEEN THE NW & SW CORNERS OF SEC 19 ON LINE WITH THE SE AND E 1/4 CORNERS OF SEC 24 NEWARK TWP.

D) Describe any material discrepancy between the location of the corner as restored or reestablished and the location of that corner as previously restored or reestablished by distance and direction. Show the discrepancy on the plan view drawing under (a), above. Show the distances between the corner as previously restored or reestablished and (1) the corner as restored or reestablished, and (2) to at least 4 of the witness monuments shown on the drawing in (a), above.

NONE

(E) Was the corner reestablished through lost corner proportionate methods? If so, show the method, including the directions and distances to other public land survey corners used as evidence or used for proportioning the corner location.

YES

I, Donald Barnes, hereby certify that the corner points as identified by the corner code index were, in a field survey on, NOV 21, 1997, established, re-established, monumented, re-monumented, recovered or restored as expressed below and in conformance with the regulations and rules as required in the current manual of survey instructions of the United States Department of Interior, Bureau of Land Management.

COUNTY SURVEYOR FILING DATA

Donald Barnes
Seal
Oct 9, 1998

Number of included sheets _____

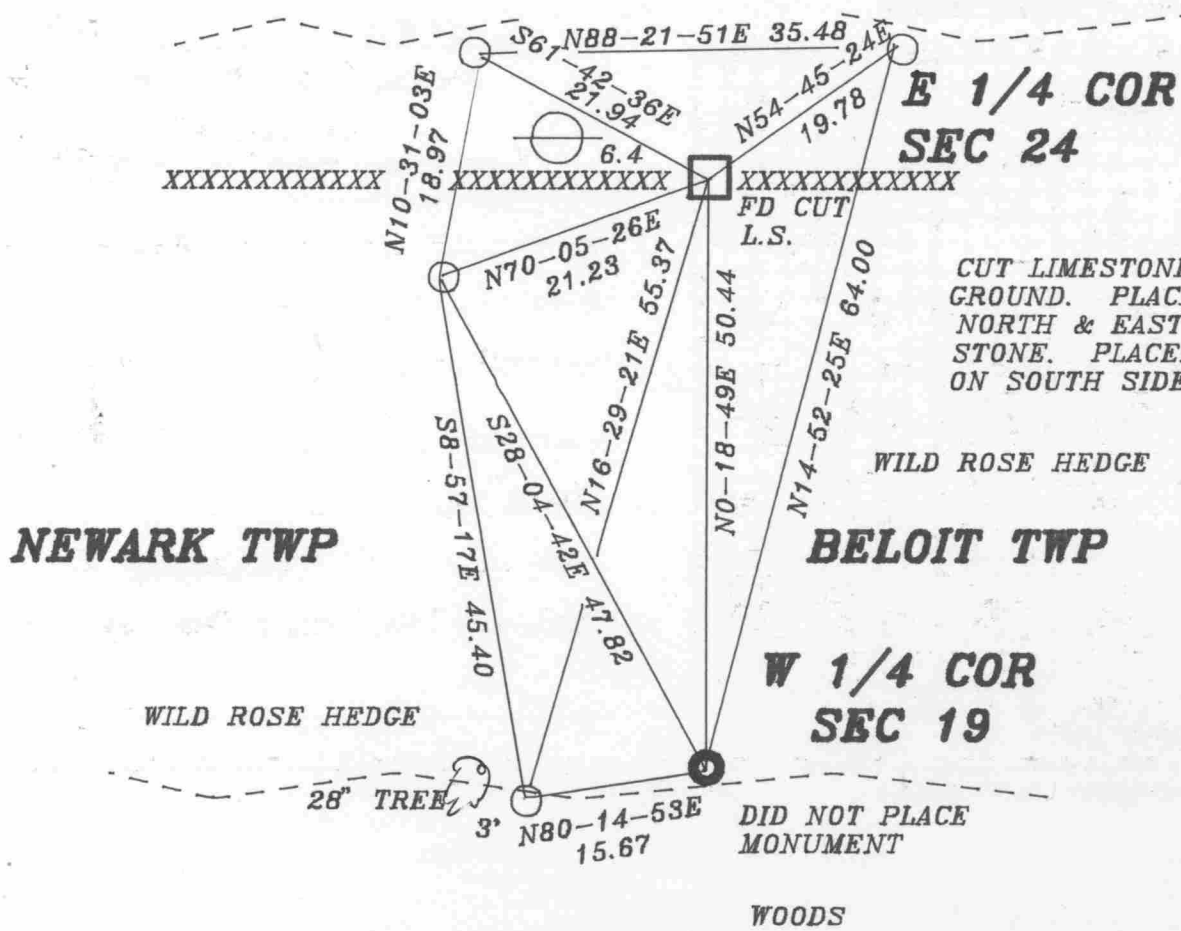
CORNER CODE _____

EMBOSS LAND SURVEYOR SEAL

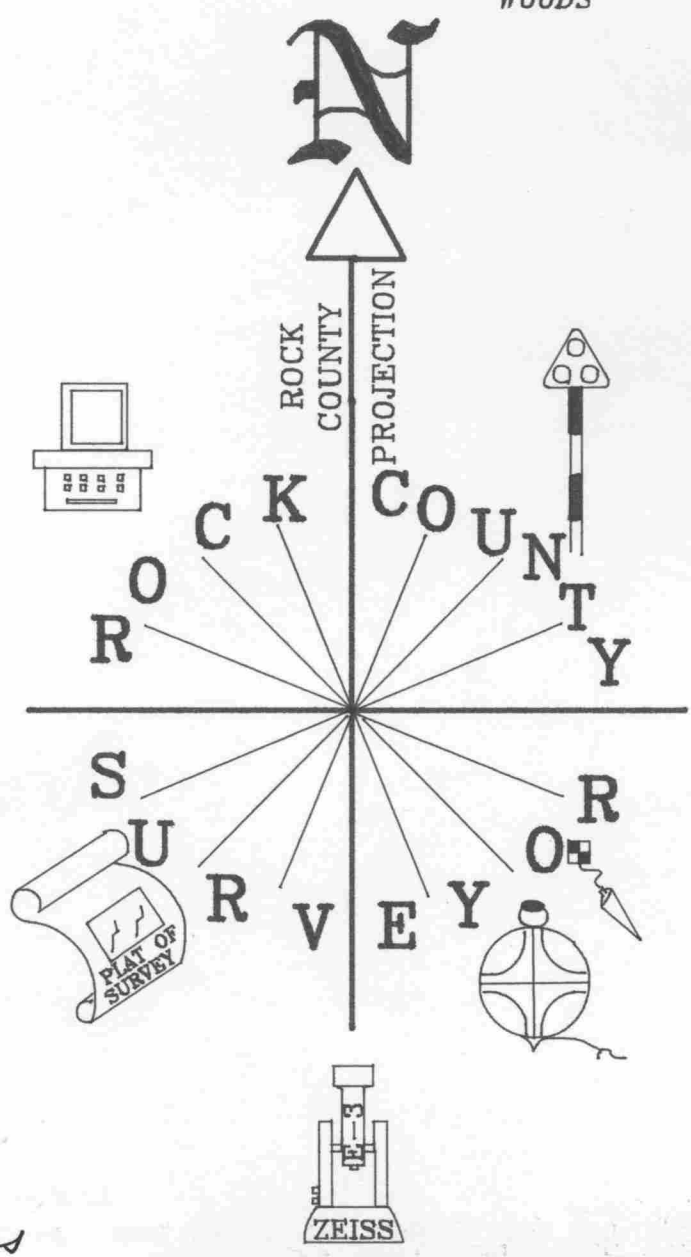
A-E 7.08 REQUIREMENT

P-1

FARM FIELD



CUT LIMESTONE IS 0.6' ABOVE GROUND. PLACED MAGNETS ON NORTH & EAST SIDE OF STONE. PLACED CARSONITE ON SOUTH SIDE OF L.S.



Donald Barnes
EMBOSSSED SEAL
2/4/98

OBSERVATION SHEET # 574

P-1

HARRISON SURVEYED THE FOLLOWING ROCK COUNTY TOWNSHIPS IN THE FOLLOWING ORDER:

		FIELD NOTE JOGS		PLAT	ACTUAL
	1833	ON WEST BNDY			
MARCH 14-17	1833	AVON SOUTH HALF	NO	1COR	NO
OCT 28-NOV 4	1833	PORTER	FEW	ALL	ALL
NOV 5-11	1833	UNION	YES	ALL	ALL
NOV 27-DEC 1	1833	CENTER	MOST	ALL	ALL
DEC 1-7	1833	MAGNOLIA	FEW	ALL	ALL
DEC 14-18	1833	JANESVILLE WEST HALF	NO	NO	NO
DEC 20-27	1833	PLYMOUTH	YES	NO	NO
	1834				
JAN 26-FEB 2	1834	AVON NORTH HALF	NO	1COR	NO
MARCH 8-13	1834	NEWARK	NO	NO	NO
MARCH 13-18	1834	SPRING VALLEY	NO	ALL	ALL
MARCH 16-22	1834	BELOIT WEST HALF	FEW	NO	FEW
MARCH 23-28	1834	ROCK WEST HALF	NO	NO	NO
MARCH 31 - APR 4	1834	FULTON WEST HALF	NO	NO	NO

IN CENTER & PORTER TWP ALL THE CLOSURES OF THE WEST BOUNDARY WERE LARGE AND HARRISON SPECIFICALLY STATES SETTING A POST & RAISING A MOUND FOR MANY OF THE CORNERS. THE PLAT ALLS FOR JOGS AT ALL POINTS ALTHOUGH THE FIELD NOTES DO NOT STATE SO. THE PROBLEM IS THE FIELD NOTES, ORIGINAL PLAT, AND FIELD HISTORY ARE NOT ALWAYS IN HARMONY.

THE FOLLOWING RECORDS SHOW THAT THE ORIGINAL SURVEYOR, HARRISON, PLACED N/S JOGS AT THE SECTION CORNERS BETWEEN BELOIT & NEWARK TOWNSHIPS FROM THE SW COR SECTION 31 BELOIT TOWNSHIP TO THE NW CORNER OF SEC 19. THE ORIGINAL GOVERNMENT PLAT CALLS FOR ALL THE CORNERS BETWEEN NEWARK AND BELOIT TOWNSHIPS TO BE COMMON. THE QUESTION WHY DID HARRISON CHANGE HIS FIELD PROCEDURES FOR THE NW COR SEC 18 AND THE NW COR SEC 7. THE CLOSURES WERE GREATER THAN 10.56' AT THE SW COR SEC 30 WHERE HE ESTABLISHED THE CORNER. ALSO WHY DIDN'T THE ORIGINAL PLAT REFLECT HIS JOGS AS THEY DID IN PORTER & CENTER TOWNSHIPS.

521 E-1 NW COR SEC 7 (COMMON)

1834 HARRISON FIELD NOTES WEST BETWEEN SEC 6 & 7
5161.2 INT. WEST BOUNDARY 31.02' SOUTH OF POST MARKED SAME FOR COR TO SEC 6 & 7.

541 J-1 NW COR SEC 18 (COMMON)

1834 HARRISON FIELD NOTES WEST BET 7 & 18
5175.72 INT. WEST BOUNDARY AT NORTH EDGE OF MARSH 61.38' SOUTH OF POST MARKED SAME FOR 7 & 18

554 L-1 W 1/4 COR SEC 18 (JOG)

1878 RUGER VOL 2 PG 260 SEE SURVEY SEC 13 LOCKE. CALLS FOR E 1/4 COR SEC 13 NORTH OF THE W 1/4 COR SEC 18. 2657.16 TO NW & SW CORNERS OF SEC 18. VERIFIED MAP JOG IN ORIGINAL COUNTY SURVEYOR'S VOL 2 PG 260 RECORDS.

561 N-1 NW COR SEC 19 (JOG)

1834 HARRISON FIELD NOTES WEST BET. SECS 18 & 19 RAND.
5197.5 INTERSECTED WEST BOUNDARY 59.4' SOUTH OF POST IN EAST EDGE OF MARSH} SET COR TO SEC 18 & 19 MARKED POST.

1878 RUGER VOL 2 PG 260 SHOWS THE CORNER AS BEING SOUTH OF THE SE COR SEC 13 NEWARK TWP.

574 P-1 W 1/4 COR SEC 19 (JOG)

NOTHING INDICATES A JOG.

581 R-1 SW COR SEC 19 (JOG)

1834 HARRISON FIELD NOTES WEST BE. SECS 19 & 30 RAND.
5208.72 INTERSECTED WEST BOUNDARY 50.16' SOUTH OF POST COR TREES TO 19 & 30 BUR OAK 8 N49E 29' & BUR OAK 9 S70E.

P-1

594 T-1 W 1/4 COR SEC 30 (JOG)
NOT RECORD INDICATING A JOG.

601 V-1 SW COR SEC 30 (JOG)

1834 HARRISON WEST BETWEEN SECTIONS 30 & 31 ON RAND.
5217.3 INTERSECTED WEST BOUNDARY 10.56' SOUTH OF POST &
ESTABLISHED COR TO SEC 30 & 31. BEARINGS BURR OAK 30 N15E
159 & BUR OAK 18 S29E 29

1931 SUNNY VOL 3 PG 189 INCOMPLETE RECORD SEEMS TO INDICATE THAT
SEC LINE OF SEC 30 & 31 BELOIT TWP JOGS 5.10 TO 16 LINKS.
DUG BUT FOUND NOTHING SOUTH OF SE COR SEC 25. AT SE COR SEC
25 FOUND 6X5 CUT STONE MON. OF SEC 25 & 36 NEWARK.

614 X-1 W 1/4 COR SEC 31 (JOG)

1959 BATTERMAN VOL 4 PG 6 SHOWS E 1/4 COR SEC 36 4.49' NORTH OF W
1/4 COR SEC 31. REFERENCED BOTH.

P-1