

U.S. PUBLIC LAND SURVEY MONUMENT RECORD

For Public Land Survey Corners in:

WI ADMINISTRATIVE CODE A-E 7.08 REQUIREMENT

T. 1N., R. 12E 4th P.M.

BELOIT TWP

CORNER CODE INDEX

TWP

ROCK COUNTY, WI

IF AVAILABLE

ROCK COUNTY COORDINATES PREFERRED

	1	2	3	4	5	6	7	8	9	10	11	12	13	14	15	16	17	18	19	20	21	22	23	24	25
A																									
B	6																								
C		5																							
D			4																						
E				3																					
F					2																				
G						1																			
H	1	8	9	10	11	12																			
I																									
J																									
K	18	17	16	15	14	13																			
L																									
M																									
N																									
O	19	20	21	22	23	24																			
P																									
Q																									
R																									
S																									
T	30	29	28	27	26	25																			
U																									
V																									
W																									
X																									
Y	31	32	33	34	35	36																			
Z																									

North 217,018.00 Elev. _____

East 485,586.37

Hor. Datum COUNTY Vert. Datum _____

LATITUDE _____ ELLIPS. HT. _____

LONGITUDE _____

ELLIPS. DATUM
NAD83(91) _____ COUNTY _____ LIST _____

GPS (X) _____ TRAVERSE (X) _____

BASED ON THE FOLLOWING CONTROL:

PLACE MONUMENT SYMBOL  AT PROPER LOCATION ON ABOVE INDEX

 CORNER MONUMENT

WITNESS MONUMENT

(a)

BEARINGS ARE BASED ON:

FIELD BOOK _____ PAGE # _____

SHEET 1 OF 3

SHOW A PLAN VIEW DRAWING DEPICTING THE CORNER MONUMENT AND SURROUNDING PHYSICAL FEATURES, INCLUDING THE EXCAVATION AREA AND DEPTH.

PLANNING & ZONING COMMITTEE ADOPTED THE ABOVE FORM ON 12/2/1982

CORNER CODE N-17

BE569

(B) Describe any record evidence, monument evidence, occupational evidence, testimonial evidence or any other material evidence you considered, and whether the monument was found or placed.

1834 HARRISON NORTH BETWEEN SECTIONS 22 & 23
2640 QUARTER SEC COR NEAR THE SOUTHERN EDGE OF SMALL SLASH.
SET POST & RAISED MOUND.
3036 LEFT SLASH
5280 SET CORNER TO SECS 14,15,22,&23 IN GROUND SLOPING S.W.
POST & RAISED MOUND.
NORTH BETWEEN SECTIONS 15 & 14
1158 WHITE OAK 15 IN DIAM.
2640 QUARTER SEC CORNER {WHITE OAK 14 N29W 19';WHITE OAK 12
S17W 33'
3207.6 WHITE OAK 12 IN DIAM
3426.72 WHITE OAK 12 IN DIAM.
3528.36 BROOK 6.6' CRS S.E. A FINE STREAM.
EAST ON RANDOM BET SECS 15 & 22
2640 TEMPY 1/4 SEC COR.
3300 DESCEND INTO LOW WET GROUND CRS E
4620 LEFT SAME
5214 INT E BOUNDARY 19.8' NORTH OF POST
COR WEST BET SEC 14 & 20
2607 QUARTER SEC COR. SET POST AND RAISED MOUND ON A SMALL
POINT DESCENDING NE
5214 SEC COR.
EAST BETWEEN SECTIONS 14 & 23
660 LEAVE PRAIRIE & ENTER BURR AND WO TIMBER
2640 QUARTER SEC. CORNER NEAR THE EDGE OF RIVER BOTTOM {W.O.
10 N10W 10.56';RED OAK 12 S35W 23.1'
2821.5 INT. RIGHT BANK OF ROCK RIVER. SET MEANDER POST.
1859 HOBART VOL 1 PG 120 N89-6E 3848 TO MEANDER POST & S2W 2665.74 TO W
1/4 SEC 23.
1929 BATTERMAN SUBDIVISION PLAT BK 9 PG 63A FOUND LIMESTONE.
1952 BATTERMAN MAP #404 FOUND PIN IN ORIGINAL LIMESTONE AT CORNER.
1956 SHIMEALL SUBDIVISION PLAT BK 18 PG 11 FOUND 1" PIN
1963 CTH "Q" PROJECT #51429(1) CALLS FOR A DISTANCE TO ROAD
INTERSECTION.
1963 BATTERMAN VOL 4 PG 184 138.72 EAST OF INTERSECTION OF AFTON RD &
NEWARK RD.
1971 CTH "Q" PROJECT #5755-1-21 MAP 13268 FOUND 1 1/2" PIPE
1982 LEE CSM V11 PG 171 FOUND CI 2426.13 TO ?
1984 LEUENBERGER CSM V11 PG 482 FOUND CI

FD CAST IRON MONUMENT @ CENTER OF PVMT. EXTENDED FROM WEST & 6' EAST OF
FARTHEST WEST FACE OF FIRE HOUSE BUILDING PROJECTED NORTH.

N-17

C) Was the corner restored through acceptance of (1) an obliterated evidence location, or, (2) a found perpetuated location?
ACCEPTED FOUND LOCATION.

D) Describe any material discrepancy between the location of the corner as restored or reestablished and the location of that corner as previously restored or reestablished by distance and direction. Show the discrepancy on the plan view drawing under (a), above. Show the distances between the corner as previously restored or reestablished and (1) the corner as restored or reestablished, and (2) to at least 4 of the witness monuments shown on the drawing in (a), above.

(E) Was the corner reestablished through lost corner proportionate methods? If so, show the method, including the directions and distances to other public land survey corners used as evidence or used for proportioning the corner location.
NO

I, Donald Barnes, hereby certify that the corner points as identified by the corner code index were, in a field survey on, established, re-established, monumented, re-monumented, recovered or restored as expressed below and in conformance with the regulations and rules as required in the current manual of survey instructions of the United States Department of Interior, Bureau of Land Management.

COUNTY SURVEYOR FILING DATA

Date of computer entry _____

Date microfilmed _____

Number of included sheets _____

CORNER CODE

seal

Donald Barnes

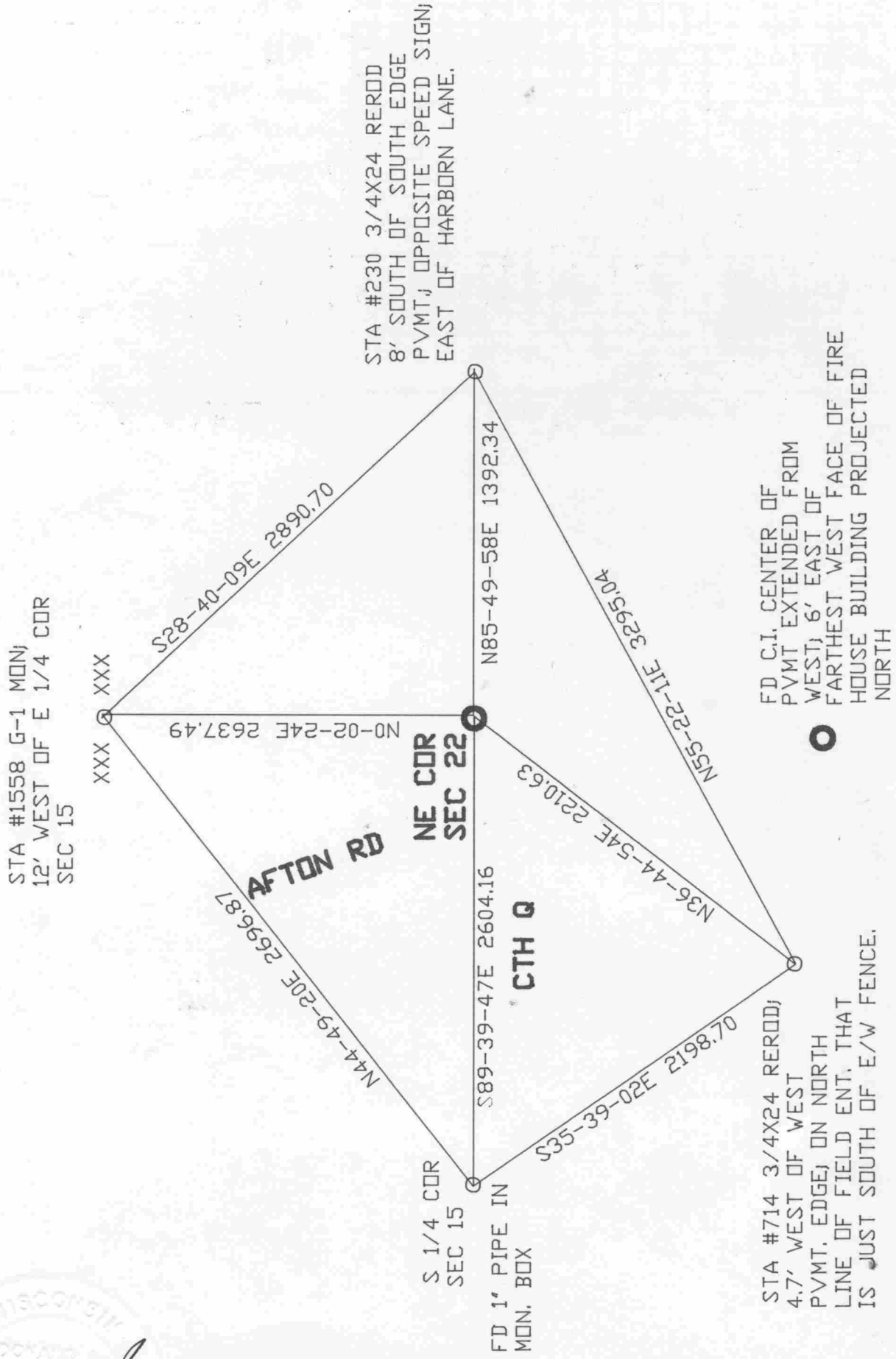
EMBOSS LAND SURVEYOR SEAL

A-E 7.08 REQUIREMENT

Oct 7, 1998

N-17

Donald Barnes
Oct 9, 1998



N-17

