

U.S. PUBLIC LAND SURVEY MONUMENT RECORD

For Public Land Survey Corners in:

WI ADMINISTRATIVE CODE A-E 7.08 REQUIREMENT

T. 1 N., R. 12 E

CORNER CODE INDEX

| | | | | | | | | | | | | | | | | | | | | | | | | | | | | | | |
|---|---|---|---|----|----|----|----|----|----|----|----|----|----|----|----|----|----|----|----|----|----|----|----|----|----|----|----|----|----|----|
| A | 1 | 2 | 3 | 4 | 5 | 6 | 7 | 8 | 9 | 10 | 11 | 12 | 13 | 14 | 15 | 16 | 17 | 18 | 19 | 20 | 21 | 22 | 23 | 24 | 25 | | | | | |
| B | | | | | | | | | | | | | | | | | | | | | | | | | | | | | | |
| C | 6 | | | | | | | | | | | | | | | | | | | | | | | | | | | | | |
| D | | 5 | | | | | | | | | | | | | | | | | | | | | | | | | | | | |
| E | | | 4 | | | | | | | | | | | | | | | | | | | | | | | | | | | |
| F | | | | 3 | | | | | | | | | | | | | | | | | | | | | | | | | | |
| G | | | | | 2 | | | | | | | | | | | | | | | | | | | | | | | | | |
| H | | | | | | 1 | | | | | | | | | | | | | | | | | | | | | | | | |
| J | 7 | | | | | | | | | | | | | | | | | | | | | | | | | | | | | |
| K | | 8 | | | | | | | | | | | | | | | | | | | | | | | | | | | | |
| L | | | 9 | | | | | | | | | | | | | | | | | | | | | | | | | | | |
| M | | | | 10 | | | | | | | | | | | | | | | | | | | | | | | | | | |
| N | | | | | 11 | | | | | | | | | | | | | | | | | | | | | | | | | |
| O | | | | | | 12 | | | | | | | | | | | | | | | | | | | | | | | | |
| P | | | | | | | 13 | | | | | | | | | | | | | | | | | | | | | | | |
| Q | | | | | | | | 14 | | | | | | | | | | | | | | | | | | | | | | |
| R | | | | | | | | | 15 | | | | | | | | | | | | | | | | | | | | | |
| S | | | | | | | | | | 16 | | | | | | | | | | | | | | | | | | | | |
| T | | | | | | | | | | | 17 | | | | | | | | | | | | | | | | | | | |
| U | | | | | | | | | | | | 18 | | | | | | | | | | | | | | | | | | |
| V | | | | | | | | | | | | | 19 | | | | | | | | | | | | | | | | | |
| W | | | | | | | | | | | | | | 20 | | | | | | | | | | | | | | | | |
| X | | | | | | | | | | | | | | | 21 | | | | | | | | | | | | | | | |
| Y | | | | | | | | | | | | | | | | 22 | | | | | | | | | | | | | | |
| Z | | | | | | | | | | | | | | | | | 23 | | | | | | | | | | | | | |
| | | | | | | | | | | | | | | | | | | 24 | | | | | | | | | | | | |
| | | | | | | | | | | | | | | | | | | | 25 | | | | | | | | | | | |
| | | | | | | | | | | | | | | | | | | | | 26 | | | | | | | | | | |
| | | | | | | | | | | | | | | | | | | | | | 27 | | | | | | | | | |
| | | | | | | | | | | | | | | | | | | | | | | 28 | | | | | | | | |
| | | | | | | | | | | | | | | | | | | | | | | | 29 | | | | | | | |
| | | | | | | | | | | | | | | | | | | | | | | | | 30 | | | | | | |
| | | | | | | | | | | | | | | | | | | | | | | | | | 31 | | | | | |
| | | | | | | | | | | | | | | | | | | | | | | | | | | 32 | | | | |
| | | | | | | | | | | | | | | | | | | | | | | | | | | | 33 | | | |
| | | | | | | | | | | | | | | | | | | | | | | | | | | | | 34 | | |
| | | | | | | | | | | | | | | | | | | | | | | | | | | | | | 35 | |
| | | | | | | | | | | | | | | | | | | | | | | | | | | | | | | 36 |

Beloit TWP
ROCK COUNTY WI

IF AVAILABLE
ROCK COUNTY COORDINATES PREFERRED

North 219,655.37 Elev. _____

East 485,602.28

Hor. Datum County Vert. Datum _____

LATITUDE _____ ELLIPS. HT. _____

LONGITUDE _____

GPS (X) _____ TRAVERSE (X) _____

BASED ON THE FOLLOWING CONTROL:

PLACE MONUMENT SYMBOL AT PROPER LOCATION ON ABOVE INDEX

CORNER MONUMENT WITNESS MONUMENT

BEARINGS ARE BASED ON: _____

FIELD BOOK _____ PAGE # _____

SHEET 1 OF 2

SHOW A PLAN VIEW DRAWING DEPICTING THE CORNER MONUMENT AND SURROUNDING PHYSICAL FEATURES, INCLUDING THE EXCAVATION AREA AND DEPTH.

PLANNING & ZONING COMMITTEE ADOPTED THE ABOVE FORM ON 12/2/1982

CORNER CODE 6-17

BE558

(B) Describe any record evidence, monument evidence, occupational evidence, testimonial evidence or any other material evidence you considered, and whether the monument was found or placed.

1834 HARRISON ORIG SURVEY QUARTER SEC CORNER IN PRAIRIE ON A POINT DESCENDING SW. SET A POST & RAISED A MOUND.

1850 TOWN ROAD RECORDS BK 1 PG 130. "DUGGAN ROAD" COMMENCING AT THE NORTHWEST CORNER OF SECTION 2 IN SAID TOWN, RUNNING SOUTH ON THE WESTERN LINE OF SAID SECTION 2, AND SECTIONS 11 AND 14, TWO RODS FROM OR BEYOND THE CENTER OF SECTION 14; THENCE WEST FROM THE CENTER OF SAID SECTION 14, 1155' MORE OR LESS TO INTERSECT THE ROAD LEADING FROM BELOIT TO JANESVILLE.

1952 BATTERMAN MAP #404 CALLS FOR CORNER BUT STATES NOTHING ABOUT IT. CALLS FOR S89-49-30E 1728.2 FROM SEC COR TO A FOUND PIN.

DUG & FOUND NOTHING. SET G-1 MONUMENT AS REFERENCE MONUMENT. TWO MAGNETS WERE PLACED NEXT TO G-1 & G-1 IS IN TREE ROOTS AND ON E/W FENCE LINE. PLACED CARSONITE POST ON SE SIDE OF MONUMENT. ACCEPTED E/W FENCE FOR N/S LOCATION OF CORNER WHICH IS IN HARMONY WITH BATTERMAN'S PINS AT RAVINE SUBDIVISION. PLACED CORNER ON LINE WITH NW & SW CORNERS OF SEC 14 WHICH IS IN HARMONY WITH BATTERMAN'S DISTANCE TO THE WESTERLY PIN. THE W 1/4 CORNER IS IN THE NE FACE OF A 10" TREE. DID NOT INSTALL A MONUMENT.

C) Was the corner restored through acceptance of (1) an obliterated evidence location, or, (2) a found perpetuated location?
ACCEPTED FOUND PERPETUATED LOCATION.

D) Describe any material discrepancy between the location of the corner as restored or reestablished and the location of that corner as previously restored or reestablished by distance and direction. Show the discrepancy on the plan view drawing under (a), above. Show the distances between the corner as previously restored or reestablished and (1) the corner as restored or reestablished, and (2) to at least 4 of the witness monuments shown on the drawing in (a), above.

(E) Was the corner reestablished through lost corner proportionate methods? If so, show the method, including the directions and distances to other public land survey corners used as evidence or used for proportioning the corner location.

NO

I, Donald Barnes, hereby certify that the corner points as identified by the corner code index were, in a field survey on, MARCH 1998, established, re-established, monumented, re-monumented, recovered or restored as expressed below and in conformance with the regulations and rules as required in the current manual of survey instructions of the United States Department of Interior, Bureau of Land Management.

Donald Barnes
3/18/98

COUNTY SURVEYOR FILING DATA

Date of computer entry _____

Date microfilmed _____

Number of included sheets _____

CORNER CODE

2-17

NW COR SEC 14

3/4X24 REROD

NO-20-44E 2659.12

3/4X24 REROD

3/4X24 REROD

Donald Barnes

EMBOSSSED SEAL

3/18/98

W 1/4 COR SEC 14

1952 BATTERMAN 1713.98
1989-50-15W 1714.13

S0-20-44W 2637.45

S0-55-55W 21.83

S83-47-27E 55.46

S60-29-19E 15.78

S77-29-33E 32.90

N87-11-35E 38.86

N82-44-49E 71.51

N 1932 BATTERMAN 91-43 MEASURED 1932 BATTERMAN 91-43

S20-00-25W 18,514 ANT.

S19-25-18E 15,667 STACK

S21-01-26E 17,800 CUPOLA

S29-44-08E 12,003 WATER TANK

S11-02-38E 18,468 BELOTT MUNICIPAL TANK

BEARINGS @ G-1 MON.

NO MON. ON

NE FACE OF TREE

G-1 MON. WITH CARBONITE

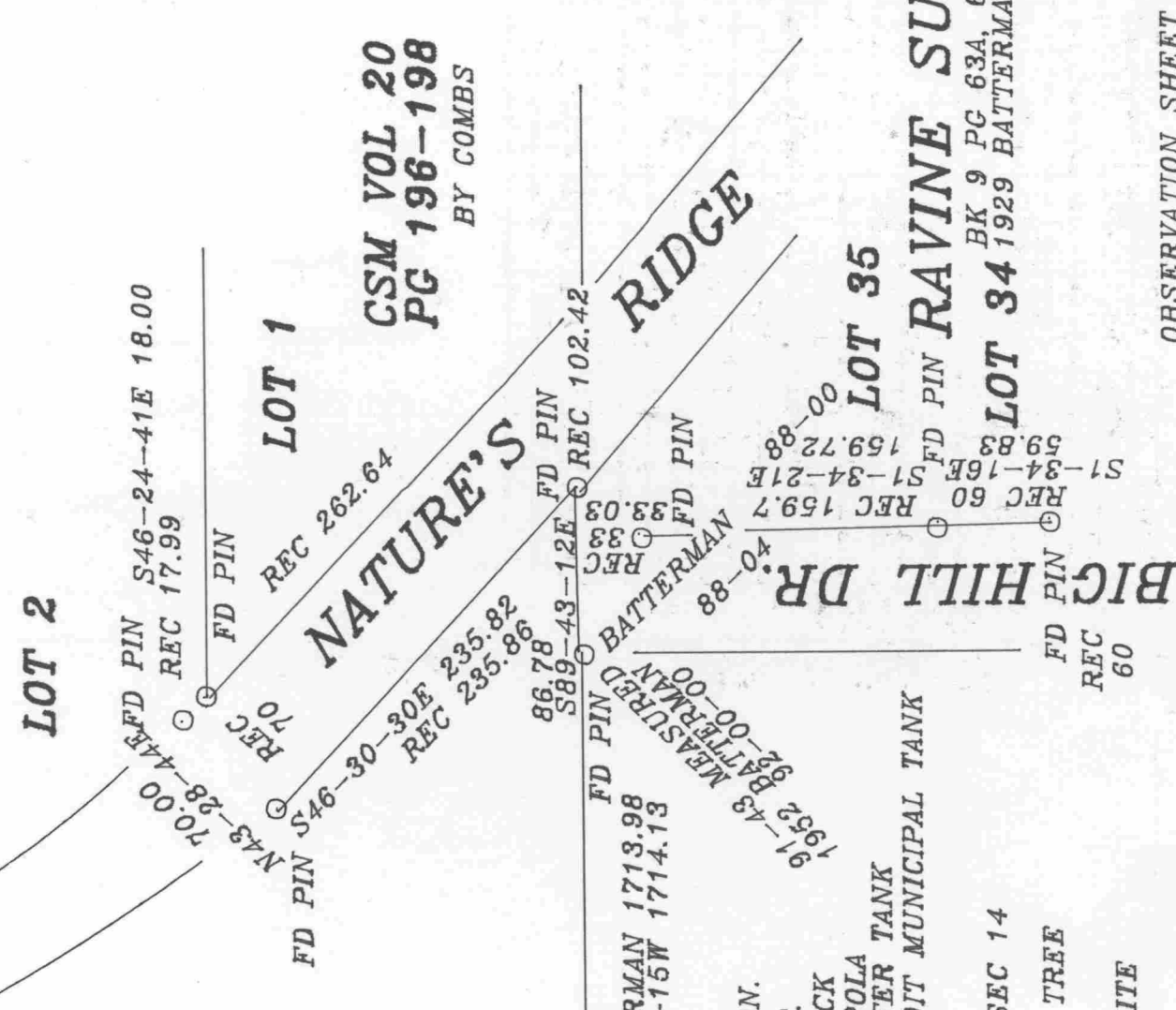
W 1/4 COR SEC 14

NO MON. ON

NE FACE OF TREE

G-1 MON. WITH CARBONITE

SW COR SEC 14



LOT 2

LOT 1

LOT 35

NATURE'S RIDGE

BIG HILL DR

FD PIN S46-24-41E 18.00

REC 17.99

REC 70

REC 262.64

CSM VOL 20
PG 196-198
BY COMBS

REC 235.82

REC 235.86

REC 102.42

REC 159.7

REC 60

REC 159.7

REC 60

REC 60

REC 60

ROCK COUNTY

CO.

PROJECTION

N

CK

Y

VE

SUR

R

O

NT

Y

Y

Y

