

# U.S. PUBLIC LAND SURVEY MONUMENT RECORD

For Public Land Survey Corners in:

WI ADMINISTRATIVE CODE A-E 7.08 REQUIREMENT

T. 1 N., R. 2 E

CORNER CODE INDEX

A	1	2	3	4	5	6	7	8	9	10	11	12	13	14	15	16	17	18	19	20	21	22	23	24	25
B	6																								
C																									
D																									
E																									
F	1																								
G																									
H																									
J																									
K																									
L	18																								
M																									
N																									
O																									
P	19																								
Q																									
R																									
S																									
T	30																								
U																									
V																									
W																									
X	31																								
Y																									
Z																									

TWP

ROCK COUNTY WI

IF AVAILABLE  
ROCK COUNTY COORDINATES PREFERRED

North 227,835.62 Elev. \_\_\_\_\_

East 469,732.64

Hor. Datum COUNTY Vert. Datum \_\_\_\_\_

LATITUDE \_\_\_\_\_ ELLIPS. HT. \_\_\_\_\_

LONGITUDE \_\_\_\_\_

GPS (X) \_\_\_\_\_ TRAVERSE (X) \_\_\_\_\_

BASED ON THE FOLLOWING CONTROL:

PLACE MONUMENT SYMBOL  AT PROPER LOCATION ON ABOVE INDEX

CORNER MONUMENT

WITNESS MONUMENT

(a)

BEARINGS ARE BASED ON:

FIELD BOOK \_\_\_\_\_ PAGE # \_\_\_\_\_

SHEET 1 OF 3

SHOW A PLAN VIEW DRAWING DEPICTING THE CORNER MONUMENT AND SURROUNDING PHYSICAL FEATURES, INCLUDING THE EXCAVATION AREA AND DEPTH.

PLANNING & ZONING COMMITTEE ADOPTED THE ABOVE FORM ON 12/2/1982

CORNER CODE E-5

BE 523

(B) Describe any record evidence, monument evidence, occupational evidence, testimonial evidence or any other material evidence you considered, and whether the monument was found or placed.

1834 HARRISON NORTH BETWEEN SEC 7 & 8  
2640 QUARTER SEC COR. IN GROUND DESCENDING SOUTH POST &  
RAISED MOUND  
5280 COR TO SECS 5,6,7& 8  
GROUND DESCENDING N.E. SET POST & RAISED MOUND  
EAST ON RAND. BET. 5 & 8  
2640 TEMPY 1/4 P  
5297.16 EAST BOUNDARY 11.88' NORTH OF POST  
COR WEST  
2648.58 QUARTER SEC COR IN RAVINE RUNNING NORTH POST & SET  
MOUND  
5297.16 SEC COR.  
WEST BET SEC 6 & 7  
2640 TEMPY 1/4 SEC COR  
5161.2 INT. WEST BOUNDARY 31.02' SOUTH OF POST MARKED SAME  
FOR COR TO SEC 6 & 7. LANE &? SAME  
COR EAST  
2521.2 QUARTER SEC COR. SET POST & MOUND ON HIGH GROUND  
5161.2 SEC COR  
NORTH BETWEEN SECS 5 & 6  
2640 QUARTER SEC COR ON GROUND DESCENDING NORTH TO MARSH.  
SET A POST & RAISED MOUND  
4290 ENTER MARSH  
5456.88 INT. NORTH BOUNDARY 204.6 WEST OF POST IN MARSH. SET  
POST & RAISED MOUND OF LU? MARCH 22 1834  
1870 RUGER VOL 2 PG 45 FD HH SET BY COLLINS 2647.26 VAR 4-43 TO S 1/4  
COR SEC 6.  
1962 BATTERMAN VOL 4 PG 174 DUG AT SE COR SEC 6. FOUND NOTHING.  
CORNER APPEARED TO HAVE BEEN REMOVED BY DITCHING.  
1978 BARNES VOL 5 PG 390 ROAD RECORDS STATES FINLEY RD TO THE NORTH &  
WEST WAS ON THE SECTION LINE. SET CI MON. AT INTERSECTION OF  
CENTER OF FINLEY RD TO THE NORTH & WEST. THIS WAS IN HARMONY WITH  
OCCUPATION LINES TO THE SOUTH & EAST AS DEPICTED ON A TOPOGRAPHIC  
MAP BY CHICAGO AERIAL SURVEY CO. AT MAP SCALE OF 1"=200'. CORNER  
IS IN DITCH. REFERENCED SAME.  
1980 BARNES VOL 6 PG 108 FOUND CI 2632.91 TO W 1/4 COR SEC 5, 2655.09 TO  
W 1/4 COR SEC 8, 2684.20 TO N 1/4 COR SEC 8, & ANGLE 89-47-31 AT  
SW COR SEC 5 FROM W 1/4 COR SEC 5 TO S 1/4 COR SEC 5.  
1981 BARNES VOL 6 PG 144 2655.49 TO S 1/4 COR SEC 6, ANGLE 89-10-06 AT  
SW COR SEC 5 FROM S 1/4 COR SEC 6 TO W 1/4 COR SEC 5, & 2632.94 TO  
W 1/4 COR SEC 5.

FOUND CAST IRON MONUMENT.

C) Was the corner restored through acceptance of (1) an obliterated evidence location, or, (2) a found perpetuated location?  
ACCEPTED FOUND PERPETUATED LOCATION.

D) Describe any material discrepancy between the location of the corner as restored or reestablished and the location of that corner as previously restored or reestablished by distance and direction. Show the discrepancy on the plan view drawing under (a), above. Show the distances between the corner as previously restored or reestablished and (1) the corner as restored or reestablished, and (2) to at least 4 of the witness monuments shown on the drawing in (a), above.

E-5

(E) Was the corner reestablished through lost corner proportionate methods? If so, show the method, including the directions and distances to other public land survey corners used as evidence or used for proportioning the corner location.  
NO

I, Donald Barnes, hereby certify that the corner points as identified by the corner code index were, in a field survey on, established, re-established, monumented, re-monumented, recovered or restored as expressed below and in conformance with the regulations and rules as required in the current manual of survey instructions of the United States Department of Interior, Bureau of Land Management.

seal

COUNTY SURVEYOR FILING DATA

Date of computer entry \_\_\_\_\_

Date microfilmed \_\_\_\_\_

Number of included sheets \_\_\_\_\_

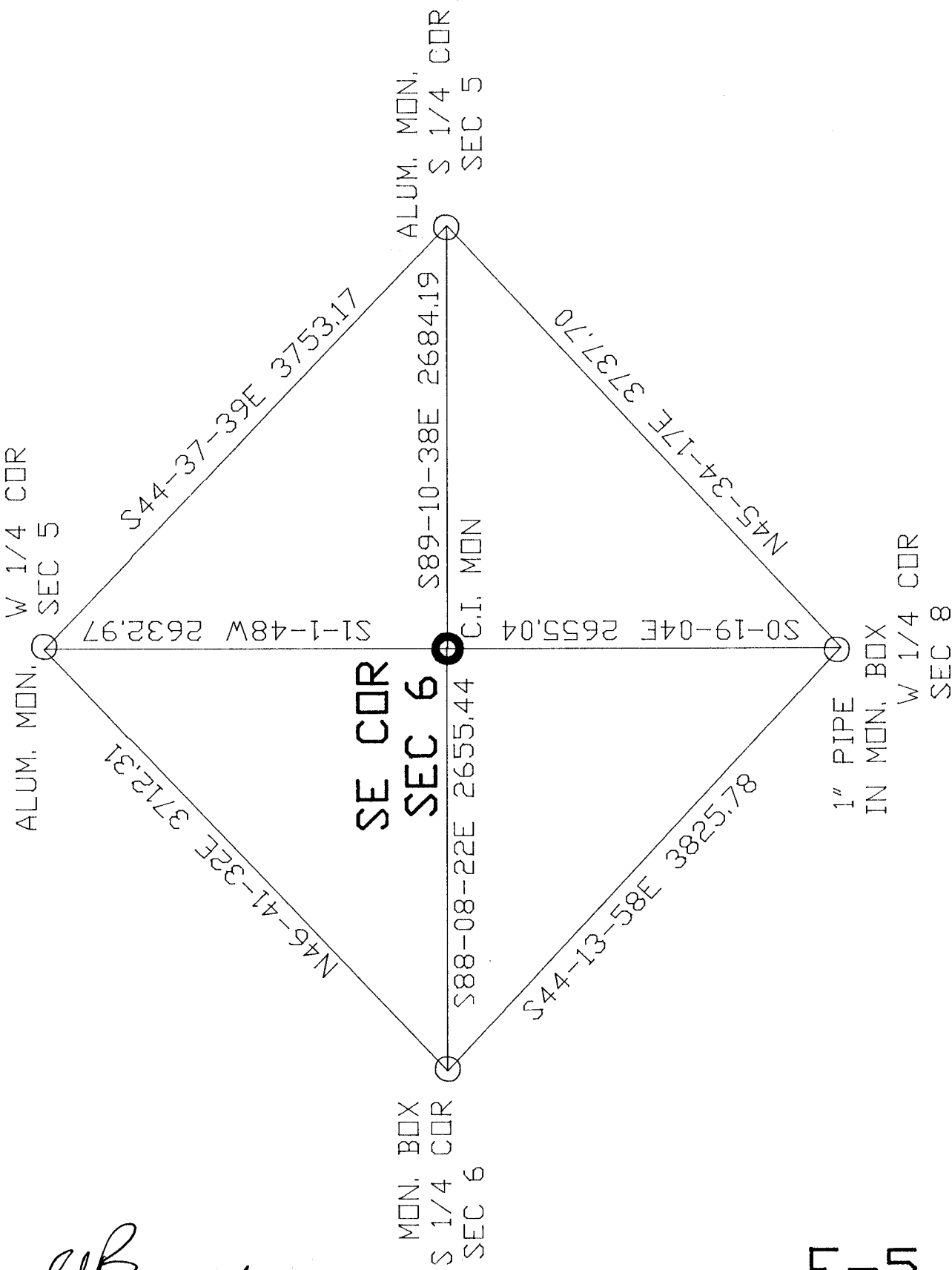
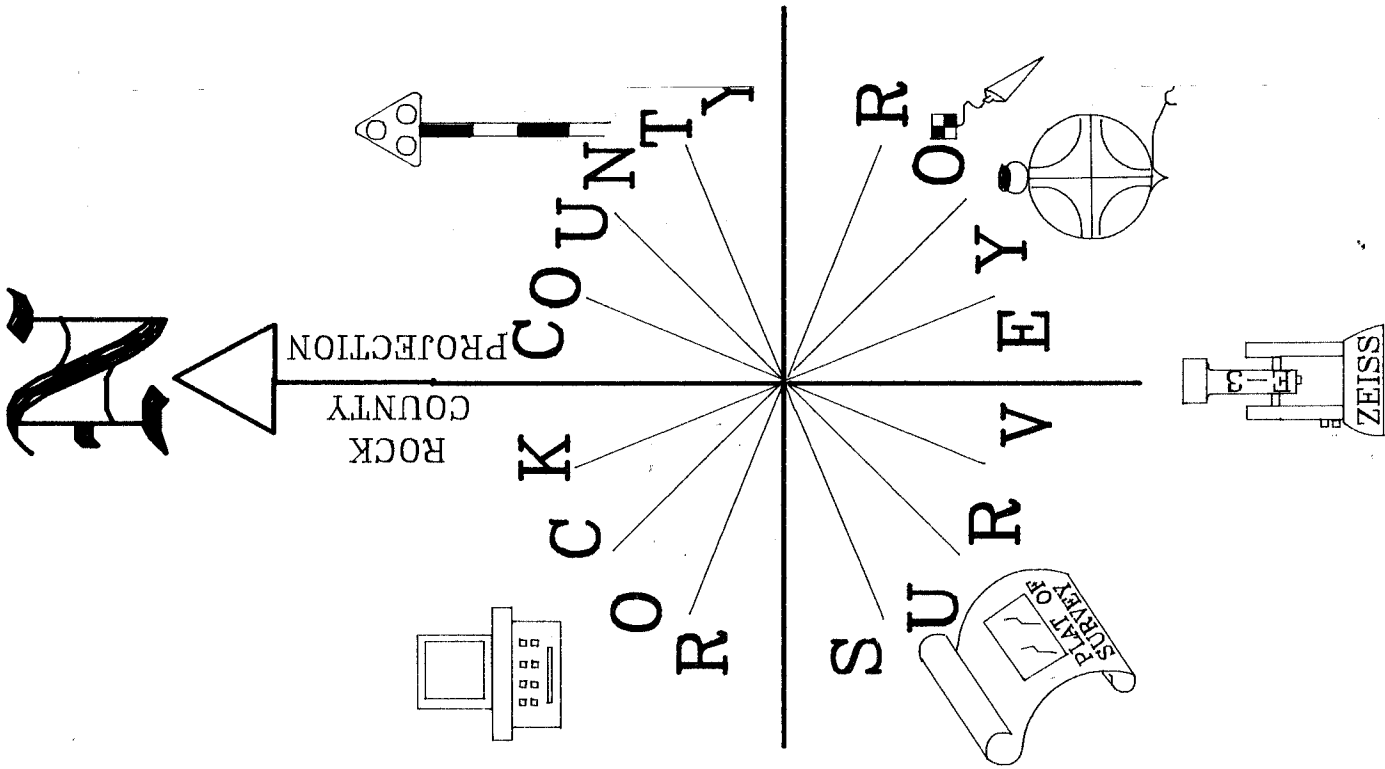
CORNER CODE

EMBOSS LAND SURVEYOR SEAL

A-E 7.08 REQUIREMENT

*Donald Barnes*  
*OCT 19, 1998*

*E-5*



Donald Barnes  
Oct 9, 1998

F-5