

U.S. PUBLIC LAND SURVEY MONUMENT RECORD

For Public Land Survey Corners in:

WI ADMINISTRATIVE CODE A-E 7.08 REQUIREMENT

T. 1N., R. 12E 4th P.M.

CORNER CODE INDEX

A	1	2	3	4	5	6	7	8	9	10	11	12	13	14	15	16	17	18	19	20	21	22	23	24	25
B	6	4	5																						
C																									
D																									
E																									
F																									
G	7		8		9		10		11		12		13		14		15		16		17		18		19
H																									
J																									
K	18		17		16		15		14		13		12		11		10		9		8		7		6
L																									
M																									
N																									
O	19		20		21		22		23		24		25		26		27		28		29		30		31
P																									
Q																									
R																									
S																									
T	30		29		28		27		26		25		24		23		22		21		20		19		18
U																									
V																									
W																									
X																									
Y																									
Z																									

TWP
ROCK COUNTY, WI

IF AVAILABLE
ROCK COUNTY COORDINATES PREFERRED

North 230,468.17 Elev. _____

East 469,779.97

Hor. Datum COUNTY Vert. Datum _____


LATITUDE _____ ELLIPS. HT. _____

LONGITUDE _____

ELLIPS. DATUM
NAD83(91) _____ COUNTY _____ LIST _____

GPS (X) _____ TRAVERSE (X) _____

BASED ON THE FOLLOWING CONTROL:

PLACE MONUMENT SYMBOL  AT PROPER LOCATION ON ABOVE INDEX

 CORNER MONUMENT

WITNESS MONUMENT

(a)

BEARINGS ARE BASED ON:

FIELD BOOK _____ PAGE # _____

SHEET 1 OF 2

SHOW A PLAN VIEW DRAWING DEPICTING THE CORNER MONUMENT AND SURROUNDING PHYSICAL FEATURES, INCLUDING THE EXCAVATION AREA AND DEPTH.

PLANNING & ZONING COMMITTEE ADOPTED THE ABOVE FORM ON 12/2/1982

CORNER CODE C-5

BE515

(B) Describe any record evidence, monument evidence, occupational evidence, testimonial evidence or any other material evidence you considered, and whether the monument was found or placed.

- 1834 HARRISON NORTH BETWEEN SEC 5 & 6
2640 QUARTER SEC COR ON GROUND DISCENDING NORTH TO MARSH.
SET A POST & RAISED MOUND
4290 ENTER MARSH
5456.88 INT. NORTH BOUNDARY 204.6' WEST OF POST IN MARSH. SET
POST & RAISED MOUND OF ?. MARCH 22 1834
- 1881 LEE VOL 2 PG 328 USED TO SUBDIVIDE SEC 6. AT ANGLE OF N/S & E/W
ROADS FOUND OLD STAKE IN LINE OF FENCE EXTENDING NORTH. SET DARK
HH 12X9X6 UNDER A BOARD FENCE.
- 1978 BARNES VOL 5 PG 388 FOUND HH 12X11X6 (REC 12X9X6) & REMAINS OF
STAKE UNDER HH SET ALUM. COR ON LINE WITH CENTER RD TO THE EAST &
SOUTH OF THE OLD E/W FENCE. REFERENCED SAME.
- 1980 BARNES VOL 6 PG 108 FOUND ALUM. MON. 2632.91 TO SW COR SEC
5, 2633.03 TO W 1/4 COR SEC 5, 5384.98 TO E 1/4 COR SEC 5, & ANGLE E
1/4 SEC 5-W 1/4 COR SEC 5-SW COR SEC 5 90-01-40. THE FOLLOWING
RECORD PENNEQUIN MEASUREMENTS: 2633.03 TO SW COR SEC 5, 5384.91 TO
E 1/4 COR SEC 5, & ANGLE E 1/4 COR SEC 5-W 1/4 COR SEC 5-SW COR SEC
5 90-01-40.
- 1980 PENNEQUIN CSM VOL 10 PG 262 5384.92 TO E 1/4 COR SEC 5
1981 SCHROEDER CSM VOL 10 PG 388 2648.64 TO E 1/4 COR SEC 5.
1981 BARNES VOL 6 PG 144 CALLS FOR 2632.91 TO SE COR SEC 6 & ANGLE S
1/4 COR SEC 6-SE COR SEC 6-E 1/4 COR SEC 6 91-38-24

FD ALUM. MON.

C) Was the corner restored through acceptance of (1) an obliterated evidence location, or, (2) a found perpetuated location?
ACCEPTED FOUND LOCATION.

D) Describe any material discrepancy between the location of the corner as restored or reestablished and the location of that corner as previously restored or reestablished by distance and direction. Show the discrepancy on the plan view drawing under (a), above. Show the distances between the corner as previously restored or reestablished and (1) the corner as restored or reestablished, and (2) to at least 4 of the witness monuments shown on the drawing in (a), above.

(E) Was the corner reestablished through lost corner proportionate methods? If so, show the method, including the directions and distances to other public land survey corners used as evidence or used for proportioning the corner location.
NO

I, Donald Barnes, hereby certify that the corner points as identified by the corner code index were, in a field survey on, established, re-established, monumented, re-monumented, recovered or restored as expressed below and in conformance with the regulations and rules as required in the current manual of survey instructions of the United States Department of Interior, Bureau of Land Management.

COUNTY SURVEYOR FILING DATA

Date of computer entry _____

Date microfilmed _____

Number of included sheets _____

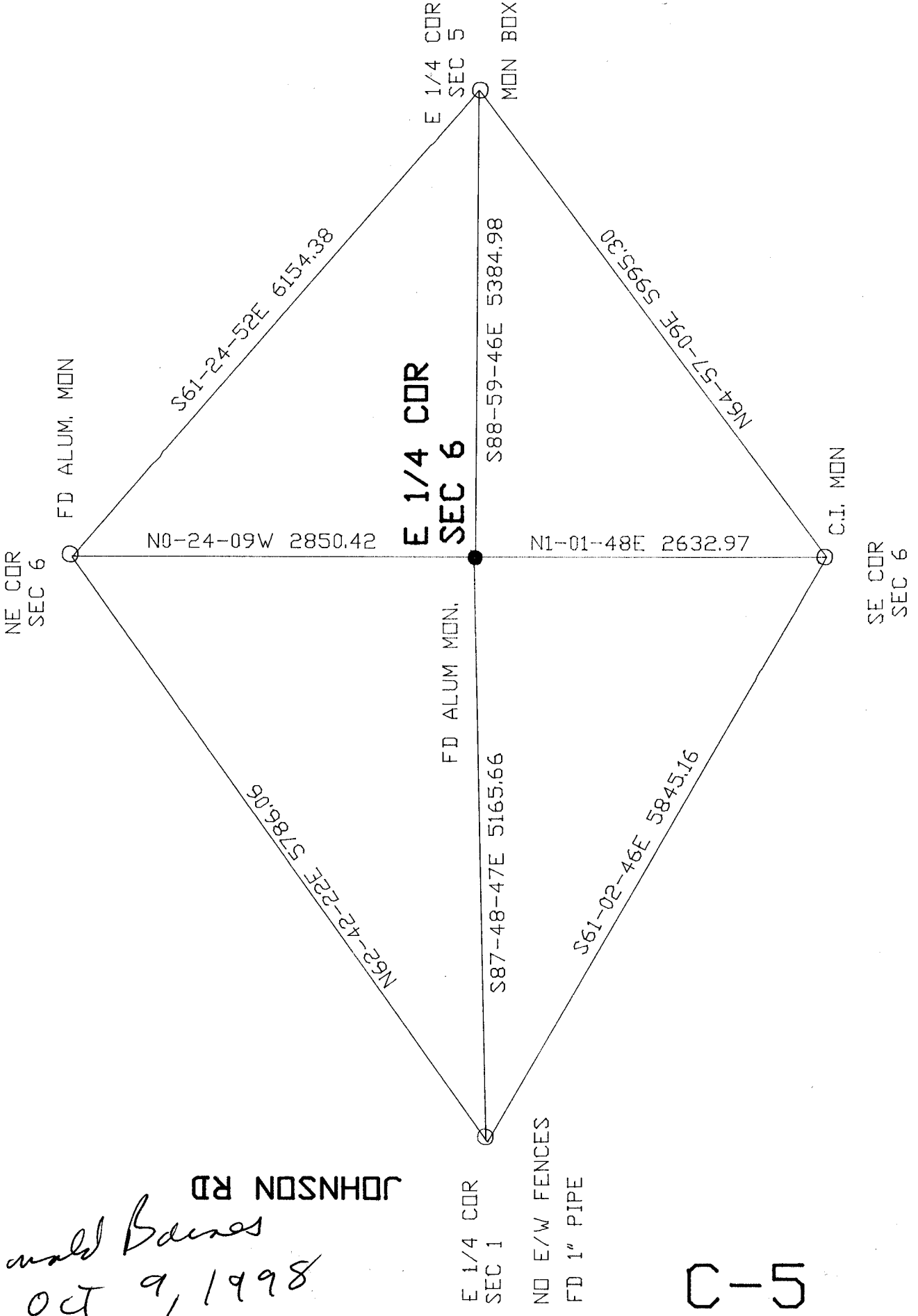
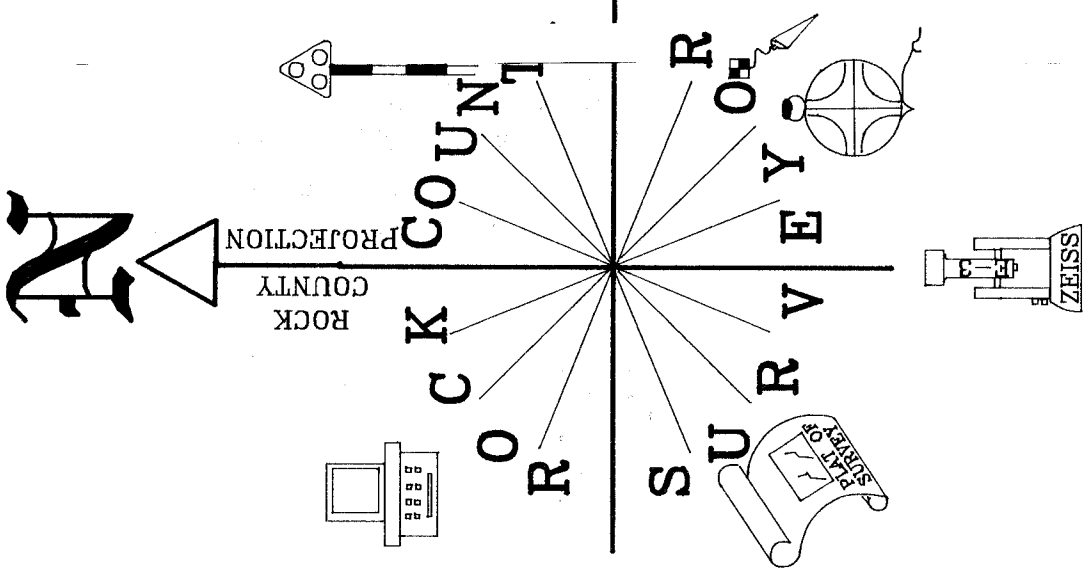
CORNER CODE

EMBOSS LAND SURVEYOR SEAL

A-E 7.08 REQUIREMENT

C-5

seal
Donald Barnes
Oct 9, 1998



Donald Barnes
 OCT 9, 1998
 JOHNSON RD

C-5