

# U.S. PUBLIC LAND SURVEY MONUMENT RECORD

For Public Land Survey Corners in:

T. 1N., R. 12E

WI ADMINISTRATIVE CODE A-E 7.08 REQUIREMENT

## BELOIT TWP TWP

CORNER CODE INDEX

### ROCK COUNTY WI

IF AVAILABLE  
ROCK COUNTY COORDINATES PREFERRED

A	1	2	3	4	5	6	7	8	9	10	11	12	13	14	15	16	17	18	19	20	21	22	23	24	25
B																									
C	6						5								4										1
D																									
E																									
F																									
G	1						8								10										12
H																									
J																									
K																									
L	18						11								15										13
M																									
N																									
O																									
P	19														22										24
Q																									
R																									
S																									
T	30						29								27										25
U																									
V																									
W																									
X	31						32								34										36
Y																									
Z																									

PLACE MONUMENT SYMBOL  AT PROPER LOCATION ON ABOVE INDEX

North \_\_\_\_\_ Elev. \_\_\_\_\_

East \_\_\_\_\_

Hor. Datum \_\_\_\_\_ Vert. Datum \_\_\_\_\_

LATITUDE \_\_\_\_\_ ELLIPS. HT. \_\_\_\_\_

LONGITUDE \_\_\_\_\_

GPS (X) \_\_\_\_\_ TRAVERSE (X) \_\_\_\_\_

BASED ON THE FOLLOWING CONTROL:

CORNER MONUMENT

WITNESS MONUMENT

(a)

BEARINGS ARE BASED ON:

FIELD BOOK \_\_\_\_\_ PAGE # \_\_\_\_\_

SHEET 1 OF 2

SHOW A PLAN VIEW DRAWING DEPICTING THE CORNER MONUMENT AND SURROUNDING PHYSICAL FEATURES, INCLUDING THE EXCAVATION AREA AND DEPTH.

PLANNING & ZONING COMMITTEE ADOPTED THE ABOVE FORM ON 12/2/1982

CORNER CODE X-5

BE615

(B) Describe any record evidence, monument evidence, occupational evidence, testimonial evidence or any other material evidence you considered, and whether the monument was found or placed.

- 1834 HARRISON NORTH BETWEEN SECS 31 & 32
  - 1145.76 BURR OAK 12 IN DIAM
  - 2640 QUARTER SEC COR. BURR OAK 10 N60W 61.38', BURR OAK 12 S34W 19.14'
  - 3102 BURR OAK 12 INCH IN DIAM
  - 5049 RANDOM STATE LINE
  - 5280 COR TO SECS 29,30,31,32. BURR OAK 10 S50E 119.46', BUR OAK 8 N56E 43.56', BUR OAK 14 N55W 56.76', BURR OAK 8 S65W 112.2'
- 1938 SUNNY VOL 3 PG 402 DUG 5X6X3 1/2 DEEP & FD NOTHING.
- 1959 BATTERMAN VOL 4 PG 6 REFERENCED CORNER 2649.10 TO NE COR SEC 31, 2637.16 TO CENTER SEC 31. WPL N/S 184,997.74; E/W 2,239,930.12
- 1972 LEE SUBDIVISION BK 26 PG 5 FOUND MONUMENT BOX.
- 1975 SPRAGUE MAP #6044 N/S 184,997.736;E/W 2,239,930.118
- 1978 TALARCZYK CSM V7 PG250 FOUND PIPE IN WATER BOX.
- 1983 COMBS CSM V 11 PG 351 FOUND PIPE IN MONUMENT BOX.
- 1983 BARNES VOL 6 PG 306 FD 1" PIPE IN MON BOX 2658.08 TO SW COR SEC 32, 2659.82 TO CENTER SEC 32, & ANGLE 88-14-50 AT W 1/4 COR SEC 32 FROM CENTER SEC 32 TO SW COR SEC 32.
- 1984 LEE CSM V 11 PG 402 FOUND PIPE.

FOUND 1" PIPE IN MONUMENT BOX.

C) Was the corner restored through acceptance of (1) an obliterated evidence location, or, (2) a found perpetuated location?  
ACCEPTED FOUND LOCATION.

D) Describe any material discrepancy between the location of the corner as restored or reestablished and the location of that corner as previously restored or reestablished by distance and direction. Show the discrepancy on the plan view drawing under (a), above. Show the distances between the corner as previously restored or reestablished and (1) the corner as restored or reestablished, and (2) to at least 4 of the witness monuments shown on the drawing in (a), above.

(E) Was the corner reestablished through lost corner proportionate methods? If so, show the method, including the directions and distances to other public land survey corners used as evidence or used for proportioning the corner location.  
NO

I, Donald Barnes, hereby certify that the corner points as identified by the corner code index were, in a field survey, established, re-established, monumented, re-monumented, recovered or restored as expressed below and in conformance with the regulations and rules as required in the current manual of survey instructions of the United States Department of Interior, Bureau of Land Management.

*Donald Barnes*  
seal  
*Oct 14, 1998*

COUNTY SURVEYOR FILING DATA

Date of computer entry \_\_\_\_\_

Date microfilmed \_\_\_\_\_

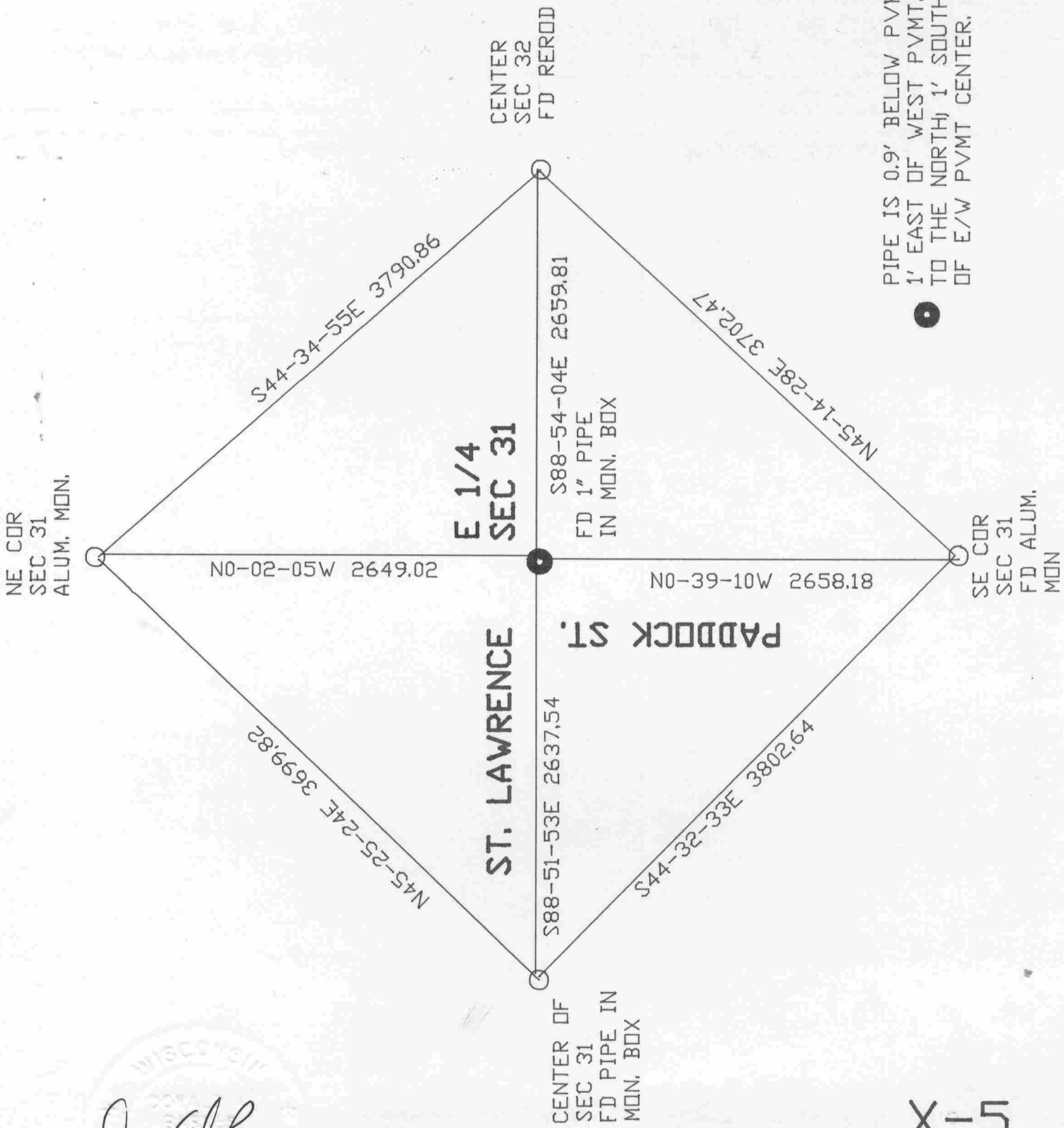
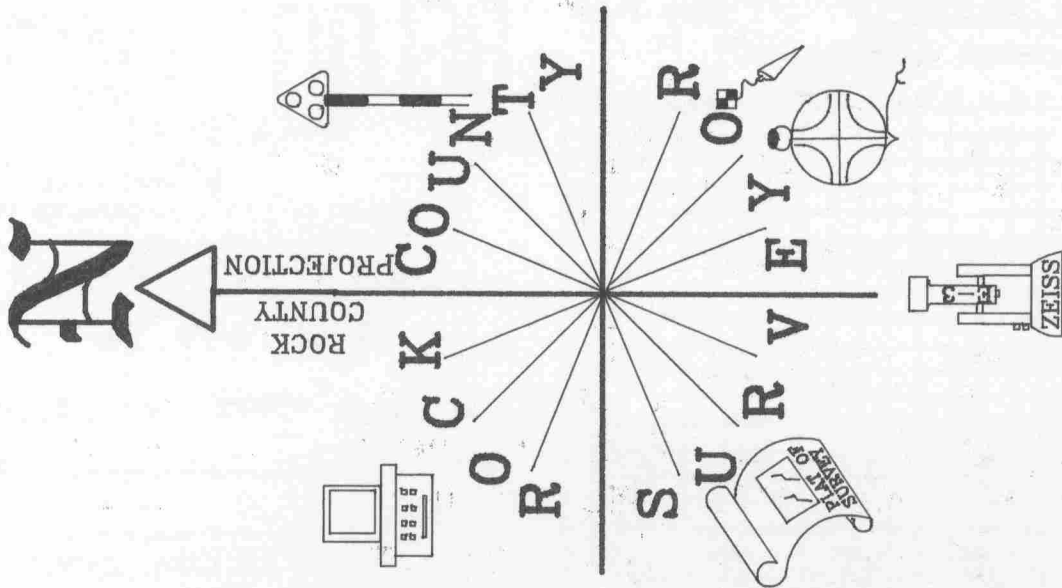
Number of included sheets \_\_\_\_\_

CORNER CODE

EMBOSS LAND SURVEYOR SEAL

A-E 7.08 REQUIREMENT

*X-5*



*Donald Barnes*  
OCT 19, 1998

X-5