

U.S. PUBLIC LAND SURVEY MONUMENT RECORD

For Public Land Survey Corners in:

WI ADMINISTRATIVE CODE A-E 7.08 REQUIREMENT

T. 1 N., R. 12 E 4th P.M.

CORNER CODE INDEX

BELOIT TWP TWP ROCK COUNTY, WI

IF AVAILABLE
ROCK COUNTY COORDINATES PREFERRED

A	1	2	3	4	5	6	7	8	9	10	11	12	13	14	15	16	17	18	19	20	21	22	23	24	25
B	6																								
C		5																							
D			4																						
E				3																					
F					2																				
G						1																			
H	7						8																		
I								9																	
J									10																
K										11															
L											12														
M												13													
N													14												
O														15											
P															16										
Q																17									
R																	18								
S																		19							
T																			20						
U																				21					
V																					22				
W																						23			
X																							24		
Y																								25	
Z																									26

North 209,252.66 Elev. _____

East 469,668.07

Hor. Datum County Vert. Datum _____

LATITUDE _____ ELLIPS. HT. _____

LONGITUDE _____

ELLIPS. DATUM
NAD83(91) _____ COUNTY _____ LIST _____

GPS (X) _____ TRAVERSE (X) _____

BASED ON THE FOLLOWING CONTROL:

PLACE MONUMENT SYMBOL  AT PROPER LOCATION ON ABOVE INDEX

 CORNER MONUMENT

WITNESS MONUMENT

(a)

BEARINGS ARE BASED ON:

FIELD BOOK _____ PAGE # _____

SHEET 1 OF 2

SHOW A PLAN VIEW DRAWING DEPICTING THE CORNER MONUMENT AND SURROUNDING PHYSICAL FEATURES, INCLUDING THE EXCAVATION AREA AND DEPTH.

PLANNING & ZONING COMMITTEE ADOPTED THE ABOVE FORM ON 12/2/1982

CORNER CODE T-5

BE595

(B) Describe any record evidence, monument evidence, occupational evidence, testimonial evidence or any other material evidence you considered, and whether the monument was found or placed.

1834 HARRISON NORTH BETWEEN SECS 29 & 30

1261.92' BROOK & CRS S.W.

2640 QUARTER SEC COR.

BURR OAK 12 N31W 81.18'

BURR OAK 12 S68W 29.7'

BURR OAK 12" MARKED

BURR OAK 12" MARKED

2454.54' BURR OAK 8 & ENTER SEATY? TIMBER

5280 COR TO SEC 19-20-29-30

TIMBER ADJACENT TOO SMALL WHEREON REESTABLISHED COR. I THEREFORE SET POST & RAISED MOUND.

1983 LEE MAP #14004 CALLS FOR THE CORNER. 2650.95 TO SE COR SEC 30 & AN ANGLE OF 88-10-00 FROM S 1/4 COR SEC 30 TO E 1/4 COR SEC 30 AT THE SE COR SEC 30.

DID NOT FIND A MONUMENT OR OLD RD. EXCAVATION PATCH. POSITION IS ACCORDING TO LEE'S SURVEY.

C) Was the corner restored through acceptance of (1) an obliterated evidence location, or, (2) a found perpetuated location?

DID NOT ACCEPT NOR REJECT LOCATION. CORNER NEEDS TO BE DUG FOR.

D) Describe any material discrepancy between the location of the corner as restored or reestablished and the location of that corner as previously restored or reestablished by distance and direction. Show the discrepancy on the plan view drawing under (a), above. Show the distances between the corner as previously restored or reestablished and (1) the corner as restored or reestablished, and (2) to at least 4 of the witness monuments shown on the drawing in (a), above.

(E) Was the corner reestablished through lost corner proportionate methods? If so, show the method, including the directions and distances to other public land survey corners used as evidence or used for proportioning the corner location.

NO

I, Donald Barnes, hereby certify that the corner points as identified by the corner code index were, in a field survey on, established, re-established, monumented, re-monumented, recovered or restored as expressed below and in conformance with the regulations and rules as required in the current manual of survey instructions of the United States Department of Interior, Bureau of Land Management.

COUNTY SURVEYOR FILING DATA

Date of computer entry _____

Date microfilmed _____

Number of included sheets _____

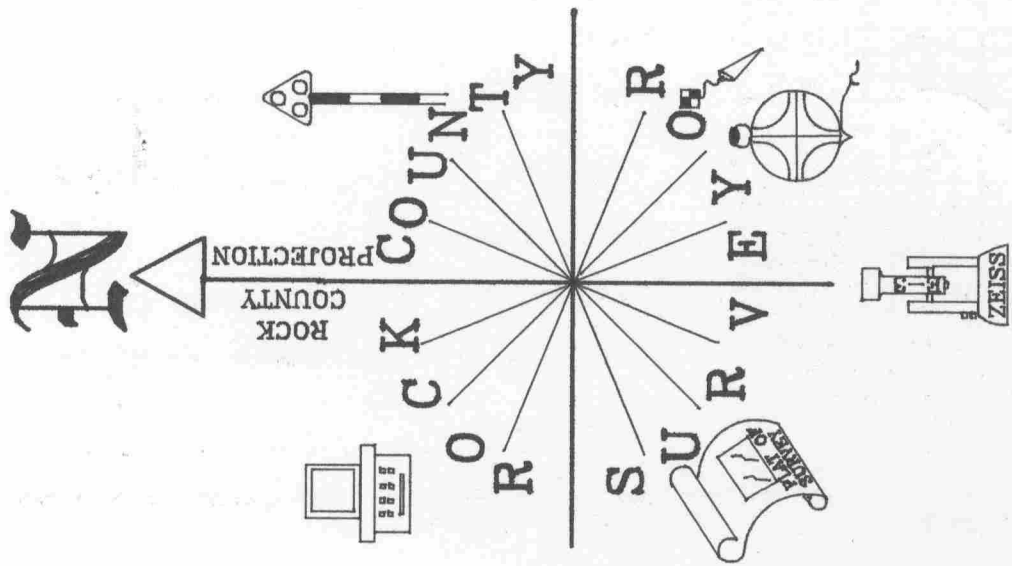
CORNER CODE

T5

EMBOSS LAND SURVEYOR SEAL

A-E 7.08 REQUIREMENT

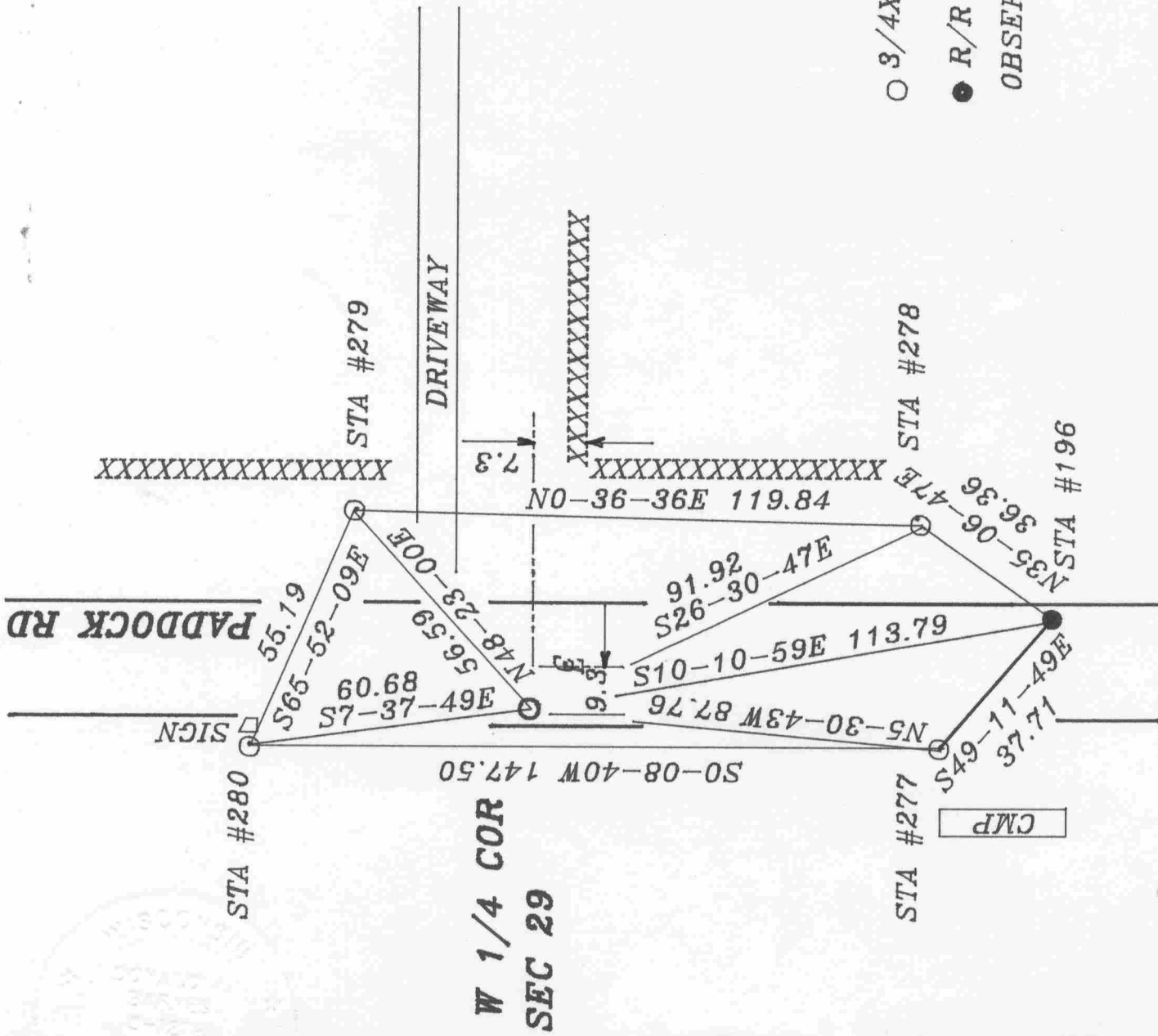
seal
Donald Barnes
Oct 16, 1998



○ 3/4X24 REROD

● R/R SPIKE

OBSERVATION SHEET #196



EMBOSSED SEAL

Ronald Barnes
OCT 19, 1998

T-5