

# U.S. PUBLIC LAND SURVEY MONUMENT RECORD

For Public Land Survey Corners in:

WI ADMINISTRATIVE CODE A-E 7.08 REQUIREMENT

T. 1N., R. 12E

CORNER CODE INDEX

A	1	2	3	4	5	6	7	8	9	10	11	12	13	14	15	16	17	18	19	20	21	22	23	24	25
B	6																								
C		5																							
D																									
E																									
F	1																								
G		8																							
H																									
J																									
K																									
L	18																								
M		11																							
N																									
O																									
P	19																								
Q		20																							
R																									
S																									
T	30																								
U		29																							
V																									
W																									
X	31																								
Y		32																							
Z																									

BELoit TWP  
ROCK COUNTY WI

IF AVAILABLE  
ROCK COUNTY COORDINATES PREFERRED

North 211,731.50 Elev. \_\_\_\_\_

East 482,951.50

Hor. Datum County Vert. Datum \_\_\_\_\_

LATITUDE \_\_\_\_\_ ELLIPS. HT. \_\_\_\_\_

LONGITUDE \_\_\_\_\_

GPS (X) \_\_\_\_\_ TRAVERSE (X) \_\_\_\_\_

BASED ON THE FOLLOWING CONTROL:

PLACE MONUMENT SYMBOL  AT PROPER LOCATION ON ABOVE INDEX

CORNER MONUMENT

WITNESS MONUMENT

(a)

BEARINGS ARE BASED ON: \_\_\_\_\_

FIELD BOOK \_\_\_\_\_ PAGE # \_\_\_\_\_

SHEET 1 OF 2

SHOW A PLAN VIEW DRAWING DEPICTING THE CORNER MONUMENT AND SURROUNDING PHYSICAL FEATURES, INCLUDING THE EXCAVATION AREA AND DEPTH.

PLANNING & ZONING COMMITTEE ADOPTED THE ABOVE FORM ON 12/2/1982

CORNER CODE R15

BE588

(B) Describe any record evidence, monument evidence, occupational evidence, testimonial evidence or any other material evidence you considered, and whether the monument was found or placed.

- 1834 HARRISON EAST ON RANDOM BET. SECS 22 & 27
- 2640 TEMPY QUARTER SEC COR.
- 5131.5 TO THE TRAIL TO TURTLE VILLAGE ON LEFT BANK OF ROCK RIVER HERETOFORE MENTIONED AS LEADING FROM PRAIRIE DE CHEIN TO CHICAGO
- 5220.6 INT E BDY 14.52' NORTH OF POST.
- 1920 BATTERMAN BK 9 PG 40. S89-27-20E 1307.45 TO THE CENTER LINE OF MCKINLEY ST. AND S0-15-40W 2657.87 TO CENTER OF SECTION 27 AT TOWNLINE RD & WHIPPLE ST.
- 1955 SHIMEALL SUBDIVISION PLAT BK 17 PG 3 FOUND 5/8 PIN.
- 1956 SHIMEALL SUBDIVISION PLAT BK 17 PG 29 FOUND 5/8 PIN
- 1957 TRIELOFF SUBDIVISION PLAT BK 18 PG 34 FOUND MONUMENT BUT STATED NOTHING ABOUT IT.
- 1957 SHIMEALL SUBDIVISION PLAT BK 18 PG 35 FOUND 5/8 PIN. ANGLE OF 90-23-55 FROM S 1/4 COR SEC 27 TO NW COR SEC 27 AT N 1/4 COR SEC 27. SHOWS SHORT TIES TO BLOCK CORNER.
- 1962 SHIMEALL SUBDIVISION PLAT BK 21 PG 26 FOUND IRON PIN.
- 1962 SHIMEALL SUBDIVISION PLAT BK 21 PG 27 FOUND 1" PIN.
- 1962 BATTERMAN CSM V 1 PG 72 FOUND 1" PIPE
- 1970 BATTERMAN CSM V 1 PG 339 FOUND PIPE
- 1978 LEE CSM V 8 PG 338 CONNECTED TO CORNER.

MAN HOLE COVERS IN BURTON INDICATES SEWER LINE DESTROYED RECORD MONUMENTS.

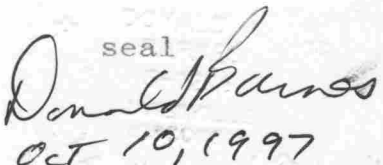
C) Was the corner restored through acceptance of (1) an obliterated evidence location, or, (2) a found perpetuated location?  
USED LOCAL RECORD PROPERTY CORNERS TO RECONSTRUCT LOCATION OF CORNER.

D) Describe any material discrepancy between the location of the corner as restored or reestablished and the location of that corner as previously restored or reestablished by distance and direction. Show the discrepancy on the plan view drawing under (a), above. Show the distances between the corner as previously restored or reestablished and (1) the corner as restored or reestablished, and (2) to at least 4 of the witness monuments shown on the drawing in (a), above.

(E) Was the corner reestablished through lost corner proportionate methods? If so, show the method, including the directions and distances to other public land survey corners used as evidence or used for proportioning the corner location.

NO

I, Donald Barnes, hereby certify that the corner points as identified by the corner code index were, in a field survey on, October 2, 1997, established, re-established, monumented, re-monumented, recovered or restored as expressed below and in conformance with the regulations and rules as required in the current manual of survey instructions of the United States Department of Interior, Bureau of Land Management.


  
 seal  
 Donald Barnes  
 Oct 10, 1997

COUNTY SURVEYOR FILING DATA

Date of computer entry \_\_\_\_\_

Date microfilmed \_\_\_\_\_

Number of included sheets 1

CORNER CODE

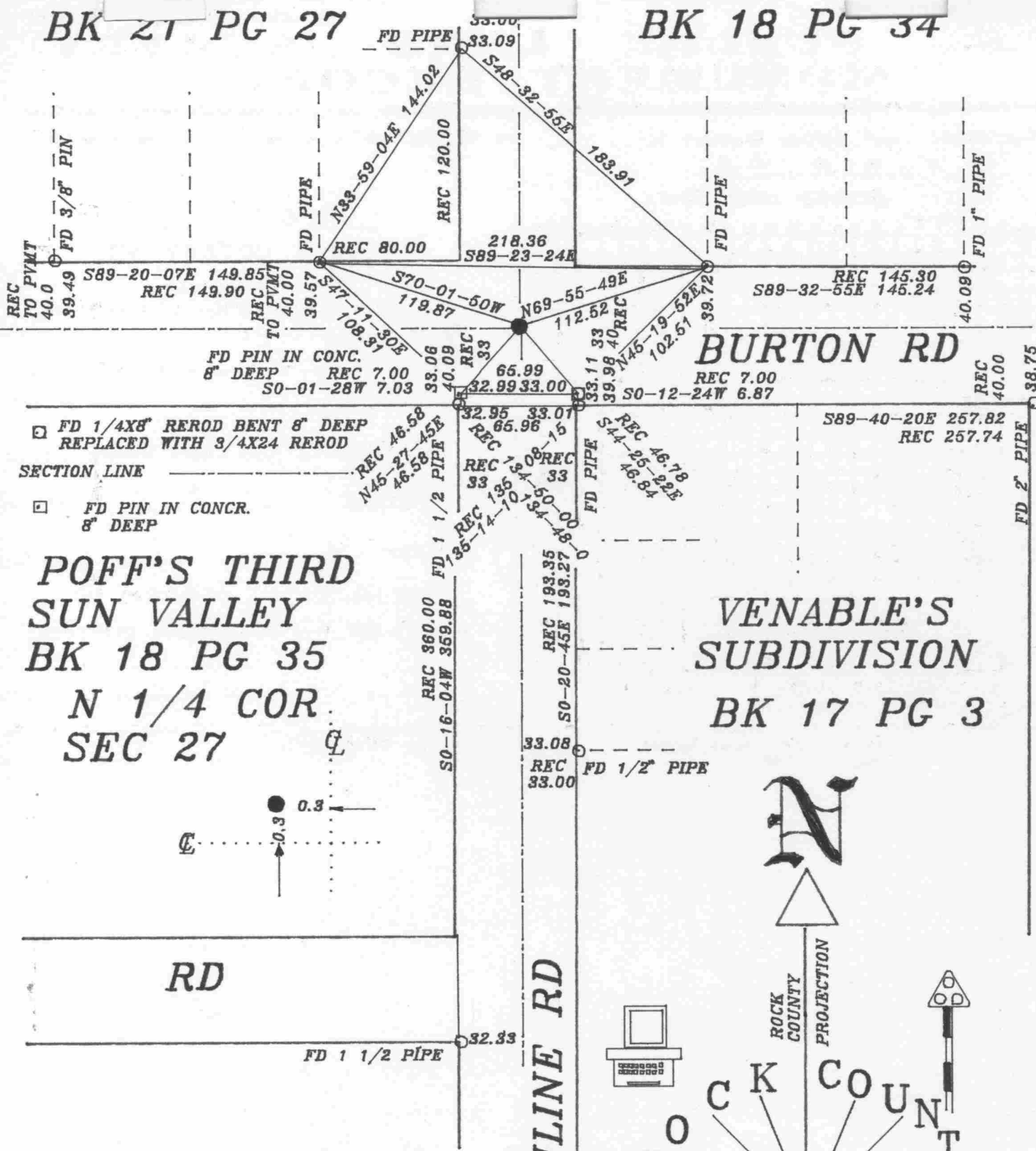
EMBOSS LAND SURVEYOR SEAL

A-E 7.08 REQUIREMENT

P 15

ROLLING HILLS  
BK 21 PG 27

SUNSET RIDGE  
BK 18 PG 34



FD 1/4X8" REROD BENT 8" DEEP  
REPLACED WITH 3/4X24 REROD

SECTION LINE

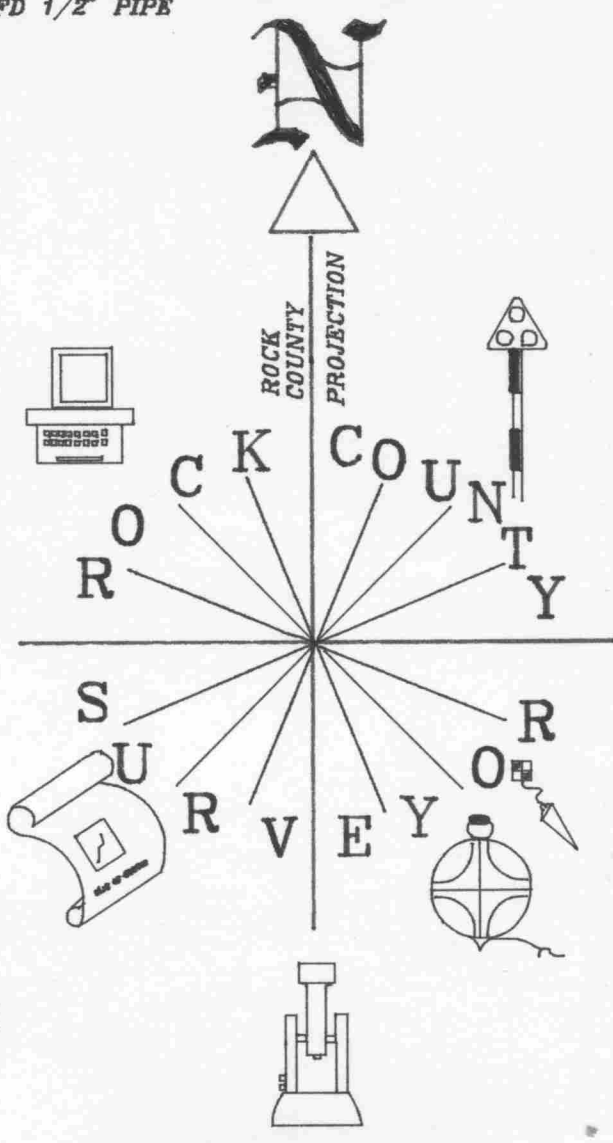
FD PIN IN CONCR.  
8" DEEP

**POFF'S THIRD  
SUN VALLEY**  
BK 18 PG 35  
N 1/4 COR  
SEC 27

**VENABLE'S  
SUBDIVISION**  
BK 17 PG 3

RD

TOWNLINER RD



OBSERVATION SHEET #861



N 1/4 COR  
SEC 22

NW COR  
SEC 27

S 1/4 COR  
SEC 27

OCT 10, 1997  
Donald Barnes  
EMBOSSSED SEAL

R-15