

# U.S. PUBLIC LAND SURVEY MONUMENT RECORD

For Public Land Survey Corners in:

WI ADMINISTRATIVE CODE A-E 7.08 REQUIREMENT

T. 1N., R. 12E 4th P.M.

## BELOIT TWP

CORNER CODE INDEX

ROCK COUNTY, WI

IF AVAILABLE  
ROCK COUNTY COORDINATES PREFERRED

	1	2	3	4	5	6	7	8	9	10	11	12	13	14	15	16	17	18	19	20	21	22	23	24	25
A																									
B																									
C																									
D																									
E																									
F																									
G																									
H																									
I																									
J																									
K																									
L																									
M																									
N																									
O																									
P																									
Q																									
R																									
S																									
T																									
U																									
V																									
W																									
X																									
Y																									
Z																									

North 211, 903.43 Elev. \_\_\_\_\_

East 469, 640.96

Hor. Datum COUNTY Vert. Datum \_\_\_\_\_


LATITUDE \_\_\_\_\_ ELLIPS. HT. \_\_\_\_\_

LONGITUDE \_\_\_\_\_

ELLIPS. DATUM  
NAD83(91) \_\_\_\_\_ COUNTY \_\_\_\_\_ LIST \_\_\_\_\_

GPS (X) \_\_\_\_\_ TRAVERSE (X) \_\_\_\_\_

BASED ON THE FOLLOWING CONTROL:

PLACE MONUMENT SYMBOL  AT PROPER LOCATION ON ABOVE INDEX

 CORNER MONUMENT

WITNESS MONUMENT

(a)

BEARINGS ARE BASED ON:

FIELD BOOK \_\_\_\_\_ PAGE # \_\_\_\_\_

SHEET 1 OF 2

SHOW A PLAN VIEW DRAWING DEPICTING THE CORNER MONUMENT AND SURROUNDING PHYSICAL FEATURES, INCLUDING THE EXCAVATION AREA AND DEPTH.

PLANNING & ZONING COMMITTEE ADOPTED THE ABOVE FORM ON 12/2/1982

CORNER CODE R-5

BE583

(B) Describe any record evidence, monument evidence, occupational evidence, testimonial evidence or any other material evidence you considered, and whether the monument was found or placed.

1845 TOWN ROAD RECORDS BEGINNING POINT OF LEGAL DESCRIPTION.

1859 RUGER VOL 1 PG 95 SURROUNDED POST BY 4 HH. BLACK OAK 6 N12-58W 114 1/2, BURT OAK 1 1/2 N76-07W 58 1/4, BUR OAK 5 N89-45W 145 2/3 VAR 6-30.

1967 BATTERMAN VOL 4 PG 345 FOR REFERENCES SEE 4-356.

1967 BATTERMAN VOL 4 PG 356 SET MON BOX OVER 1" PIPE AT COR SET BY WPL SURVEYOR. WPL N/S 192,945.36; E/W 2,239,785.59

1968 LEE CSM V1 PG 157 FOUND MONUMENT BUT SATES NOTHING ABOUT IT.

1975 SPRAGUE MAP #427 N/S 192,945.36; E/W 2,239,785.59

1981 BARNES VOL 6 PG 213 FD MONUMENT BOX WITH 1" PIPE.

1988 LEE CSM V 13 PG 423 FOUND 1" PIPE IN MONUMENT BOX.

1990 LEE MAP #11589 FOUND 1" PIPE IN MONUMENT BOX.

1994 LEUENBERGER CSM V17 PG 461 FOUND CAST IRON MONUMENT.

FD 1" PIPE IN MON. BOX.

C) Was the corner restored through acceptance of (1) an obliterated evidence location, or, (2) a found perpetuated location?  
ACCEPTED FOUND LOCATION.

D) Describe any material discrepancy between the location of the corner as restored or reestablished and the location of that corner as previously restored or reestablished by distance and direction. Show the discrepancy on the plan view drawing under (a), above. Show the distances between the corner as previously restored or reestablished and (1) the corner as restored or reestablished, and (2) to at least 4 of the witness monuments shown on the drawing in (a), above.

(E) Was the corner reestablished through lost corner proportionate methods? If so, show the method, including the directions and distances to other public land survey corners used as evidence or used for proportioning the corner location.

NO

I, Donald Barnes, hereby certify that the corner points as identified by the corner code index were, in a field survey on, established, re-established, monumented, re-monumented, recovered or restored as expressed below and in conformance with the regulations and rules as required in the current manual of survey instructions of the United States Department of Interior, Bureau of Land Management.

seal

*Donald Barnes*  
OCT 16, 1998

EMBOSS LAND SURVEYOR SEAL

COUNTY SURVEYOR FILING DATA

Date of computer entry \_\_\_\_\_

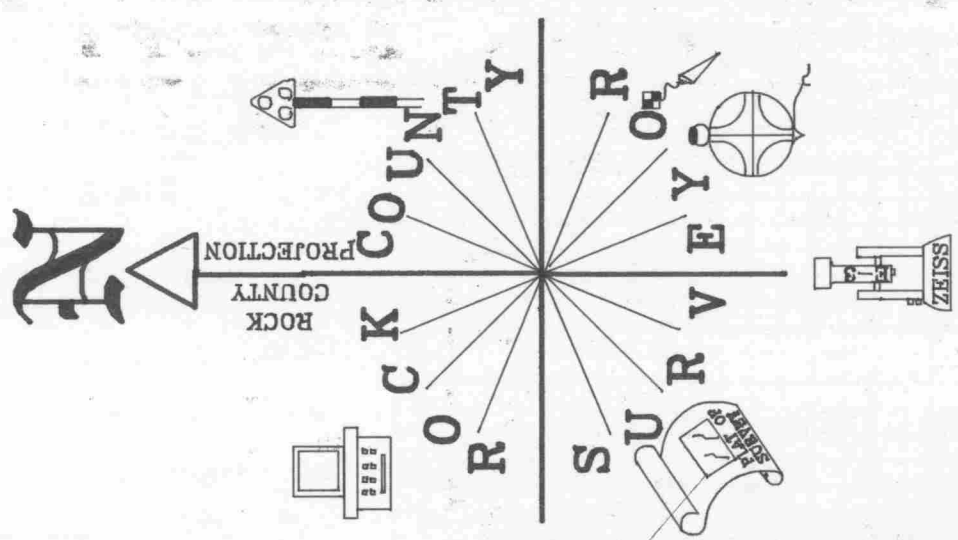
Date microfilmed \_\_\_\_\_

Number of included sheets \_\_\_\_\_

CORNER CODE

A-E 7.08 REQUIREMENT

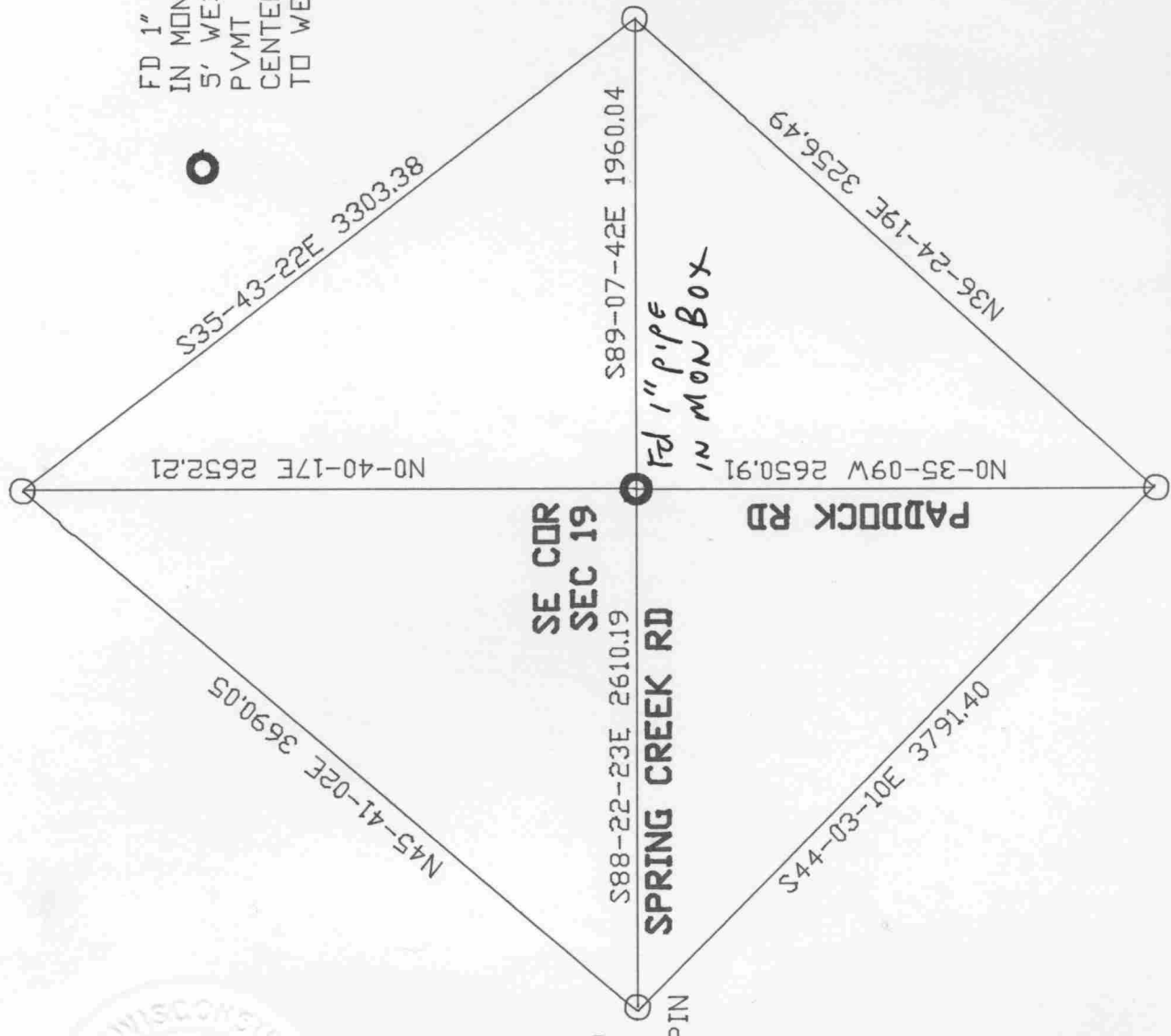
R-5



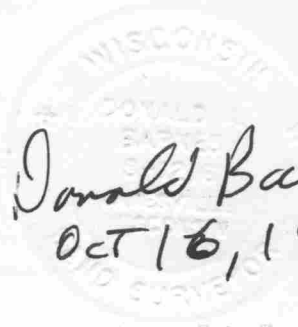
E 1/4 COR  
SEC 19  
FD DISK IN  
CONC. MON.

FD 1" PIPE  
IN MON. BOX  
5' WEST OF WEST  
PVMT TO SOUTH 2 SOUTH  
CENTER OF PVMT  
TO WEST.

STA. 219 FD R/R  
WITH CUT X  
DRILLED HOLE IN X  
2' SOUTH OF CENTER PVMT  
OPPOSITE WEST EDGE GRAVEL  
DR. TO HSE #4212



E 1/4 COR SEC 30  
AS REFERENCED



Donald Barnes  
Oct 16, 1998

S 1/4  
SEC 19

FD PIN

R-5