

U.S. PUBLIC LAND SURVEY MONUMENT RECORD

For Public Land Survey Corners in:

WI ADMINISTRATIVE CODE A-E 7.08 REQUIREMENT

T. 1N., R. 12E 4th P.M.

BELOIT TWP TWP

CORNER CODE INDEX

ROCK COUNTY, WI

IF AVAILABLE
ROCK COUNTY COORDINATES PREFERRED

A	1	2	3	4	5	6	7	8	9	10	11	12	13	14	15	16	17	18	19	20	21	22	23	24	25
B	6				5				4					3					2						1
C																									
D																									
E																									
F																									
G	7				8				9					10					11						12
H																									
I																									
J																									
K	18				17				16					15					14						13
L																									
M																									
N																									
O																									
P	19				20				21					22					23						24
Q																									
R																									
S																									
T																									
U																									
V																									
W																									
X																									
Y																									
Z																									

North 219,869.11 Elev. _____

East 469,699.65

Hor. Datum COUNTY Vert. Datum _____

LATITUDE _____ ELLIPS. HT. _____

LONGITUDE _____

ELLIPS. DATUM
NAD83(91) _____ COUNTY _____ LIST _____

GPS (X) _____ TRAVERSE (X) _____

BASED ON THE FOLLOWING CONTROL:

PLACE MONUMENT SYMBOL  AT PROPER LOCATION ON ABOVE INDEX

 CORNER MONUMENT

WITNESS MONUMENT

(a)

BEARINGS ARE BASED ON:

FIELD BOOK _____ PAGE # _____

SHEET 1 OF 2

SHOW A PLAN VIEW DRAWING DEPICTING THE CORNER MONUMENT AND SURROUNDING PHYSICAL FEATURES, INCLUDING THE EXCAVATION AREA AND DEPTH.

PLANNING & ZONING COMMITTEE ADOPTED THE ABOVE FORM ON 12/2/1982

CORNER CODE L-5

BE555

(B) Describe any record evidence, monument evidence, occupational evidence, testimonial evidence or any other material evidence you considered, and whether the monument was found or placed.

- 1834 HARRISON NORTH BET SECS 17 & 18
2640 QUARTER SEC COR ON GROUND DESCENDING SOUTH . POST & RAISED MOUND
- 3544.2 TRAIL TO TURTLE VILLAGE
- 5280 COR TO SECS 7 & 17,18 ON NORTHERN DECLIVITY OF HIGH GROUND. POST & RAISED MOUND
- 1878 RUGER VOL 2 PG 260 SEE W 1/4 COR OF SEC 17 PG 213. 2645.94 TO CENTER OF SEC 18.
- 1878 RUGER VOL 2 PG 259 FD OLD STAKE SURROUNDED BY 4 HH STONES SET NEW STAKE IN PLACE OF OLD ONE. 2650.56 VAR 4-43 TO CENTER OF SEC 17.
- 1979 COMBS CSM V9 PG 94 2659.9 TO SE COR SEC 18
- 1981 LEE CSM V10 PG 391 FOUND 5/8 PIN
- 1990 KREBS CSM V14 PG 397 FOUND PIN 2660.4 TO SE COR SEC 18
- 1991 KREBS MAP 11608 FOUND PIN. 2680.67 TO CENTER OF SEC 17, 2666.74 TO NW COR SEC 17, ANGLE OF 89-18-33 AT THE CENTER OF SEC 17 FROM W 1/4 COR SEC 17 TO THE N 1/4 COR SEC 17, ANGLE OF 90-28-04 AT THE W 1/4 COR SEC 17 FROM THE NW COR SEC 17 TO THE CENTER OF SEC 17, & ANGLE OF 88-45-20
- 1994 LEUENBERGER CSM V 17 PG 458 FOUND PIN

FOUND 3/4" REROD SURROUNDED BY HH & CARSONITE.

C) Was the corner restored through acceptance of (1) an obliterated evidence location, or, (2) a found perpetuated location?
ACCEPTED FOUND PERPETUATED LOCATION.

D) Describe any material discrepancy between the location of the corner as restored or reestablished and the location of that corner as previously restored or reestablished by distance and direction. Show the discrepancy on the plan view drawing under (a), above. Show the distances between the corner as previously restored or reestablished and (1) the corner as restored or reestablished, and (2) to at least 4 of the witness monuments shown on the drawing in (a), above.

(E) Was the corner reestablished through lost corner proportionate methods? If so, show the method, including the directions and distances to other public land survey corners used as evidence or used for proportioning the corner location.
NO

I, Donald Barnes, hereby certify that the corner points as identified by the corner code index were, in a field survey on, established, re-established, monumented, re-monumented, recovered or restored as expressed below and in conformance with the regulations and rules as required in the current manual of survey instructions of the United States Department of Interior, Bureau of Land Management.

seal
Donald Barnes
OCT 9, 1998

COUNTY SURVEYOR FILING DATA

Date of computer entry _____

Date microfilmed _____

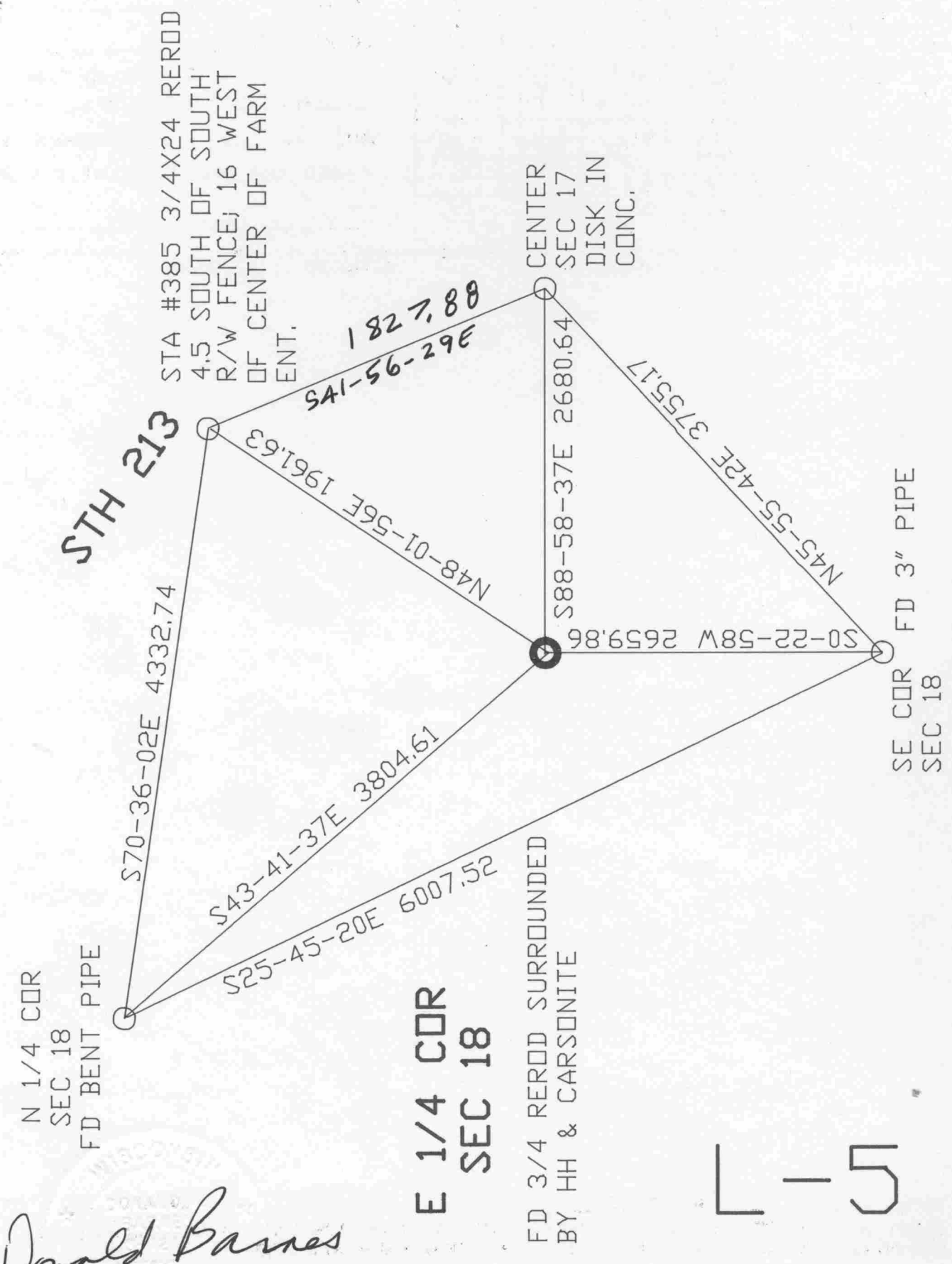
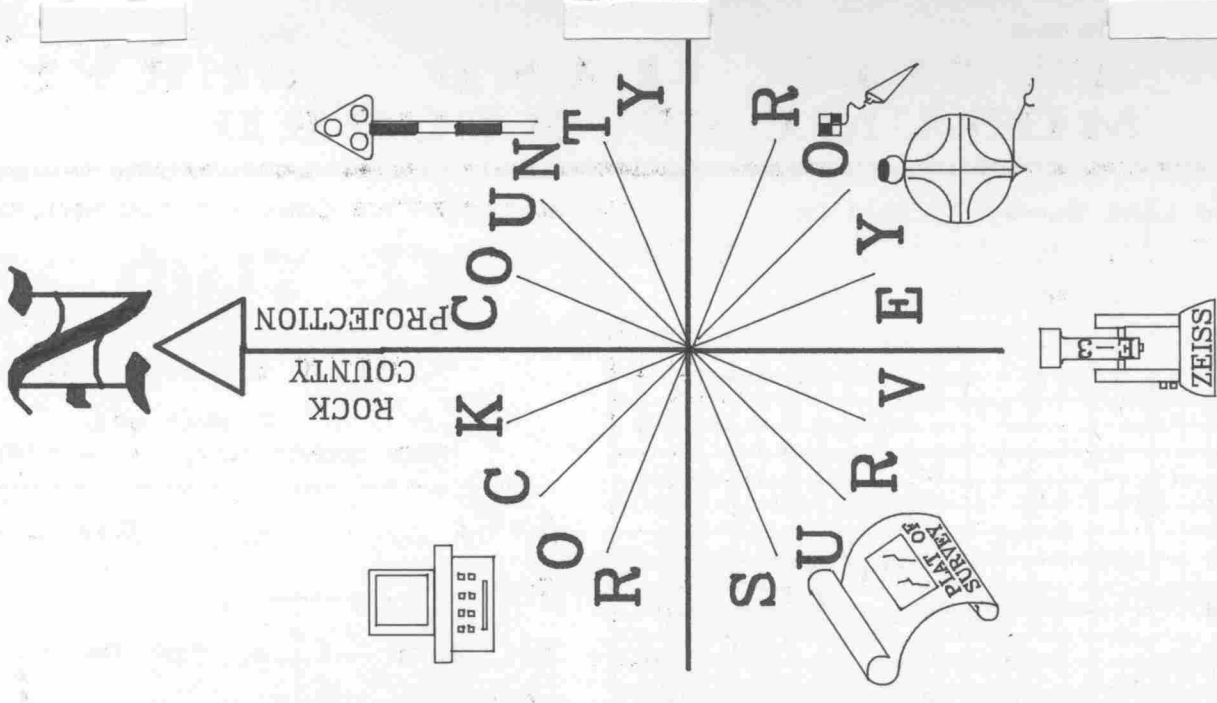
Number of included sheets _____

CORNER CODE

EMBOSS LAND SURVEYOR SEAL

A-E 7.08 REQUIREMENT

2-5



Donald Barnes
 8921/6 120
 OCT 9 1999

5
 1
 5