

U.S. PUBLIC LAND SURVEY MONUMENT RECORD

For Public Land Survey Corners in:

WI ADMINISTRATIVE CODE A-E 7.08 REQUIREMENT

T. 1 N., R. 12 E 4th P.M.

CORNER CODE INDEX

A	1	2	3	4	5	6	7	8	9	10	11	12	13	14	15	16	17	18	19	20	21	22	23	24	25
B	6				5				4					3					2						1
C																									
D	1				8				9					10					11						12
E																									
F																									
G																									
H																									
I																									
J																									
K																									
L																									
M																									
N																									
O																									
P																									
Q																									
R																									
S																									
T																									
U																									
V																									
W																									
X																									
Y																									
Z																									

BELoit TWP
ROCK COUNTY, WI

IF AVAILABLE
ROCK COUNTY COORDINATES PREFERRED

North 222,535.79 Elev. _____

East 469,725.54

Hor. Datum _____ Vert. Datum _____

LATITUDE _____ ELLIPS. HT. _____

LONGITUDE _____

ELLIPS. DATUM
NAD83(91) _____ COUNTY _____ LIST _____

GPS (X) _____ TRAVERSE (X) _____

BASED ON THE FOLLOWING CONTROL:

PLACE MONUMENT SYMBOL  AT PROPER LOCATION ON ABOVE INDEX

 CORNER MONUMENT

WITNESS MONUMENT

(a)

BEARINGS ARE BASED ON:

FIELD BOOK _____ PAGE # _____

SHEET 1 OF 2

SHOW A PLAN VIEW DRAWING DEPICTING THE CORNER MONUMENT AND SURROUNDING PHYSICAL FEATURES, INCLUDING THE EXCAVATION AREA AND DEPTH.

PLANNING & ZONING COMMITTEE ADOPTED THE ABOVE FORM ON 12/2/1982

CORNER CODE J-5

BE543

(B) Describe any record evidence, monument evidence, occupational evidence, testimonial evidence or any other material evidence you considered, and whether the monument was found or placed.

1834 HARRISON NORTH BETWEEN SECS 17 & 18

2460 QUARTER SEC COR ON GROUND DESCENDING SOUTH. POST & RAISED MOUND

3544.2 TRAIL TO TURTLE VILLAGE

5280 COR TO SEC 7,8,17, & 18 ON NORTHERN DECLIVITY OF HIGH GROUND. POST & RAISED MOUND

1864 LOCKE VOL 1 PG 208 2653.86 VAR 6-20 TO S 1/4 COR SEC 8. CORNER IN CENTER OF HWY.

1991 KREBS MAP 11608 FOUND PK NAIL 2666.74 TO W 1/4 COR SEC 17, PIPE 14.06' SOUTH & ON LINE WITH WEST LINE OF SEC 17, 2670.08 TO N1/4 COR SEC 17, 1327.69 TO N 1/16TH COR OF NE 1/4 OF SEC 18, 2667.20 FROM N 1/16TH COR OF NE 1/4 OF SEC 18 TO S 1/16TH COR OF NE 1/4 OF SEC 18, ANGLE OF 88-42-37 AT ANGLE OF 90-09-05 AT N 1/4 SEC 17 FROM CENTER SEC 17 TO NW COR SEC 17, ANGLE OF 90-04-18 AT NW COR SEC 17 FROM N 1/4 COR SEC 17 TO W 1/4 COR SEC 17, ANGLE OF 91-16-16 AT THE S 1/16TH COR OF THE NE 1/4 OF SEC 18 FROM THE N 1/4 COR SEC 18 TO THE E 1/4 COR SEC 18, & ANGLE OF 91-15-45 AT NW COR SEC 17 FROM W 1/4 COR SEC 17 TO N 1/16TH COR OF NE 1/4 OF SEC 18.

1991 COMBS CSM V15 PG 235 FOUND PK. 14.06 TO CENTER OF STH 213.

1993 COMBS CSM V17 PG 110 FOUND PK

COULD NOT FIND A RECORD CONCERNING THE PK THAT KREB REFERED TO. FOUND OLD PK HOLE THAT WAS IN HARMONY WITH RECORD DISTANCES. PLACED COTTON GIN PIN IN HOLE.

C) Was the corner restored through acceptance of (1) an obliterated evidence location, or, (2) a found perpetuated location?
ACCEPTED FOUND LOCATION.

D) Describe any material discrepancy between the location of the corner as restored or reestablished and the location of that corner as previously restored or reestablished by distance and direction. Show the discrepancy on the plan view drawing under (a), above. Show the distances between the corner as previously restored or reestablished and (1) the corner as restored or reestablished, and (2) to at least 4 of the witness monuments shown on the drawing in (a), above.
CENTER OF STH 213 IS IN HARMONY WITH LOCKE'S 1864 CALL DISTANCE AND CALL FOR CENTER OF HIGHWAY.

(E) Was the corner reestablished through lost corner proportionate methods? If so, show the method, including the directions and distances to other public land survey corners used as evidence or used for proportioning the corner location.
NO

I, Donald Barnes, hereby certify that the corner points as identified by the corner code index were, in a field survey on, APRIL 1998, established, re-established, monumented, re-monumented, recovered or restored as expressed below and in conformance with the regulations and rules as required in the current manual of survey instructions of the United States Department of Interior, Bureau of Land Management.

Donald Barnes
seal

APR. C 27, 1998

COUNTY SURVEYOR FILING DATA

Date of computer entry _____

Date microfilmed _____

Number of included sheets _____
CORNER CODE

EMBOSS LAND SURVEYOR SEAL

A-E 7.08 REQUIREMENT

J-5

Donald Barnes
 APR 27 1998

EMBOSSED SEAL

OBSERVATION SHEET #455

• POINT OF RECORD ON SECTION LINE

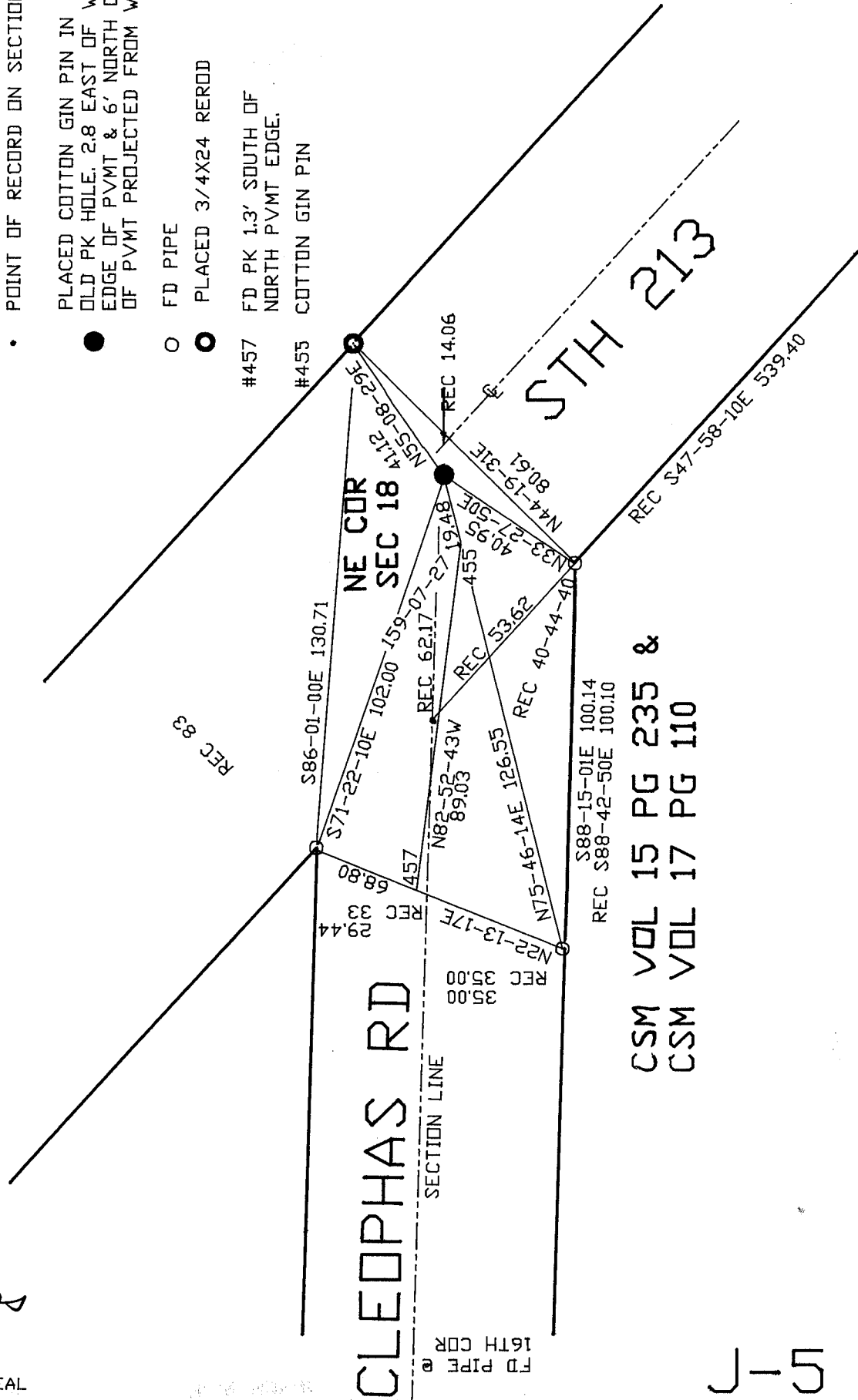
● PLACED COTTON GIN PIN IN OLD PK HOLE, 2.8 EAST OF WEST EDGE OF PVMT & 6' NORTH OF CENTER OF PVMT PROJECTED FROM WEST.

○ FD PIPE

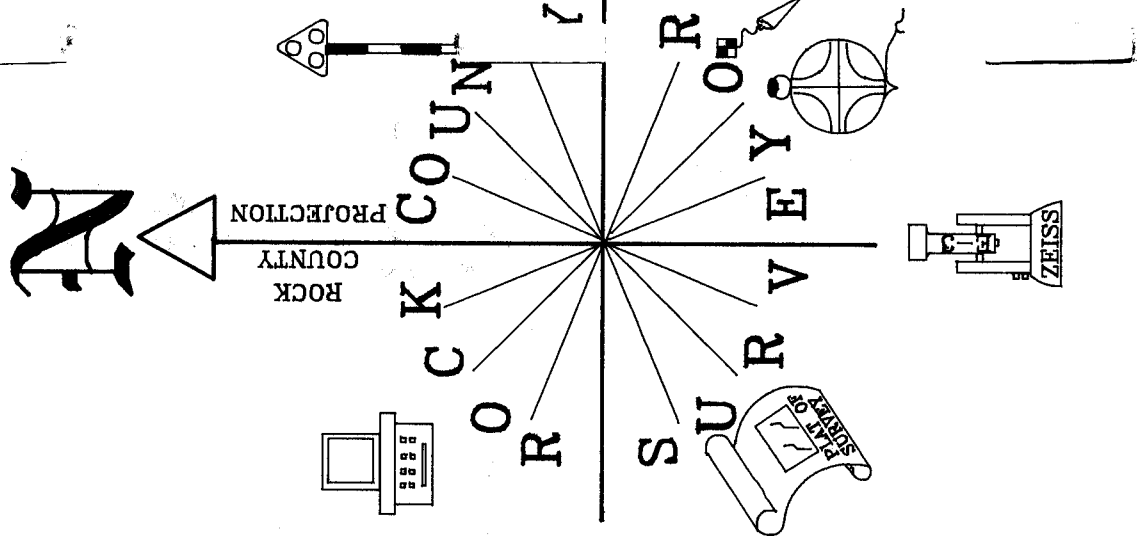
◉ PLACED 3/4X24 REROD

#457 FD PK 1.3' SOUTH OF NORTH PVMT EDGE.

#455 COTTON GIN PIN



CSM VOL 15 PG 235 &
 CSM VOL 17 PG 110



55