

U.S. PUBLIC LAND SURVEY MONUMENT RECORD

For Public Land Survey Corners in:

WI ADMINISTRATIVE CODE A-E 7.08 REQUIREMENT

T. 1N., R. 12E 4th P.M.

CORNER CODE INDEX

A	2	3	4	5	6	7	8	9	10	11	12	13	14	15	16	17	18	19	20	21	22	23	24	25
B	6			5						4				3						2				1
C																								
D																								
E																								
F	1			8						9				10						11				12
G																								
H																								
I																								
J																								
K																								
L	18									17				16						15			14	13
M																								
N																								
O																								
P																								
Q	19									20				21						22			23	24
R																								
S																								
T																								
U																								
V																								
W																								
X																								
Y																								
Z																								

TWP
ROCK COUNTY, WI

IF AVAILABLE
ROCK COUNTY COORDINATES PREFERRED

North 225,180.62 Elev. _____

East 469,747.37

Hor. Datum COUNTY Vert. Datum _____

LATITUDE _____ ELLIPS. HT. _____

LONGITUDE _____

ELLIPS. DATUM
NAD83(91) _____ COUNTY _____ LIST _____

GPS (X) _____ TRAVERSE (X) _____

BASED ON THE FOLLOWING CONTROL:

PLACE MONUMENT SYMBOL  AT PROPER LOCATION ON ABOVE INDEX

 CORNER MONUMENT

WITNESS MONUMENT

(a) BEARINGS ARE BASED ON:

FIELD BOOK _____ PAGE # _____

SHEET 1 OF 2

SHOW A PLAN VIEW DRAWING DEPICTING THE CORNER MONUMENT AND SURROUNDING PHYSICAL FEATURES, INCLUDING THE EXCAVATION AREA AND DEPTH.

PLANNING & ZONING COMMITTEE ADOPTED THE ABOVE FORM ON 12/2/1982

CORNER CODE G-5

BE535

(B) Describe any record evidence, monument evidence, occupational evidence, testimonial evidence or any other material evidence you considered, and whether the monument was found or placed.

1834 HARRISON NORTH BETWEEN SECS 7 & 8
2640 QUARTER SEC COR ON GROUND DESCENDING SOUTH. POST & RAISED MOUND
5280 COR TO SECS 5,6,7,8 GROUND DESCENDING NE
SET POST & RAISED MOUND
1864 LOCKE VOL 1 PG 208 FD OLD STAKE & MOUND. SET HH 20X14X2 1/2.
VAR 6-20 2673.32 TO CENTER OF SEC 8 & 5314.32 TO E 1/4 COR SEC 8.
CENTER OF SEC 8 IS SET BY EQUAL DISTANCE METHOD.
1962 BATTERMAN VOL 4 PG 172 DUG & FD COR. SET A MON BOX & A 1" PIPE.
REFERENCED SAME.
1978 COPPER VOL 6 PG 108 2673.32 TO CENTER OF SEC 8.
1980 FD MON BOX. 2655.09 TO NW COR SEC 8, 2673.34 TO CENTER SEC 8,
206,222.07; E/W 2,239,744.55, & ANGLE 91-01-35 AT W 1/4 COR SEC 8
FROM NW COR SEC 8 TO CENTER SEC 8.

FOUND 1" PIPE IN MONUMENT BOX

C) Was the corner restored through acceptance of (1) an obliterated evidence location, or, (2) a found perpetuated location?
ACCEPTED FOUND LOCATION

D) Describe any material discrepancy between the location of the corner as restored or reestablished and the location of that corner as previously restored or reestablished by distance and direction. Show the discrepancy on the plan view drawing under (a), above. Show the distances between the corner as previously restored or reestablished and (1) the corner as restored or reestablished, and (2) to at least 4 of the witness monuments shown on the drawing in (a), above.

(E) Was the corner reestablished through lost corner proportionate methods? If so, show the method, including the directions and distances to other public land survey corners used as evidence or used for proportioning the corner location.
NO

I, Donald Barnes, hereby certify that the corner points as identified by the corner code index were, in a field survey on, established, re-established, monumented, re-monumented, recovered or restored as expressed below and in conformance with the regulations and rules as required in the current manual of survey instructions of the United States Department of Interior, Bureau of Land Management.

COUNTY SURVEYOR FILING DATA

Date of computer entry _____

Date microfilmed _____

Number of included sheets _____

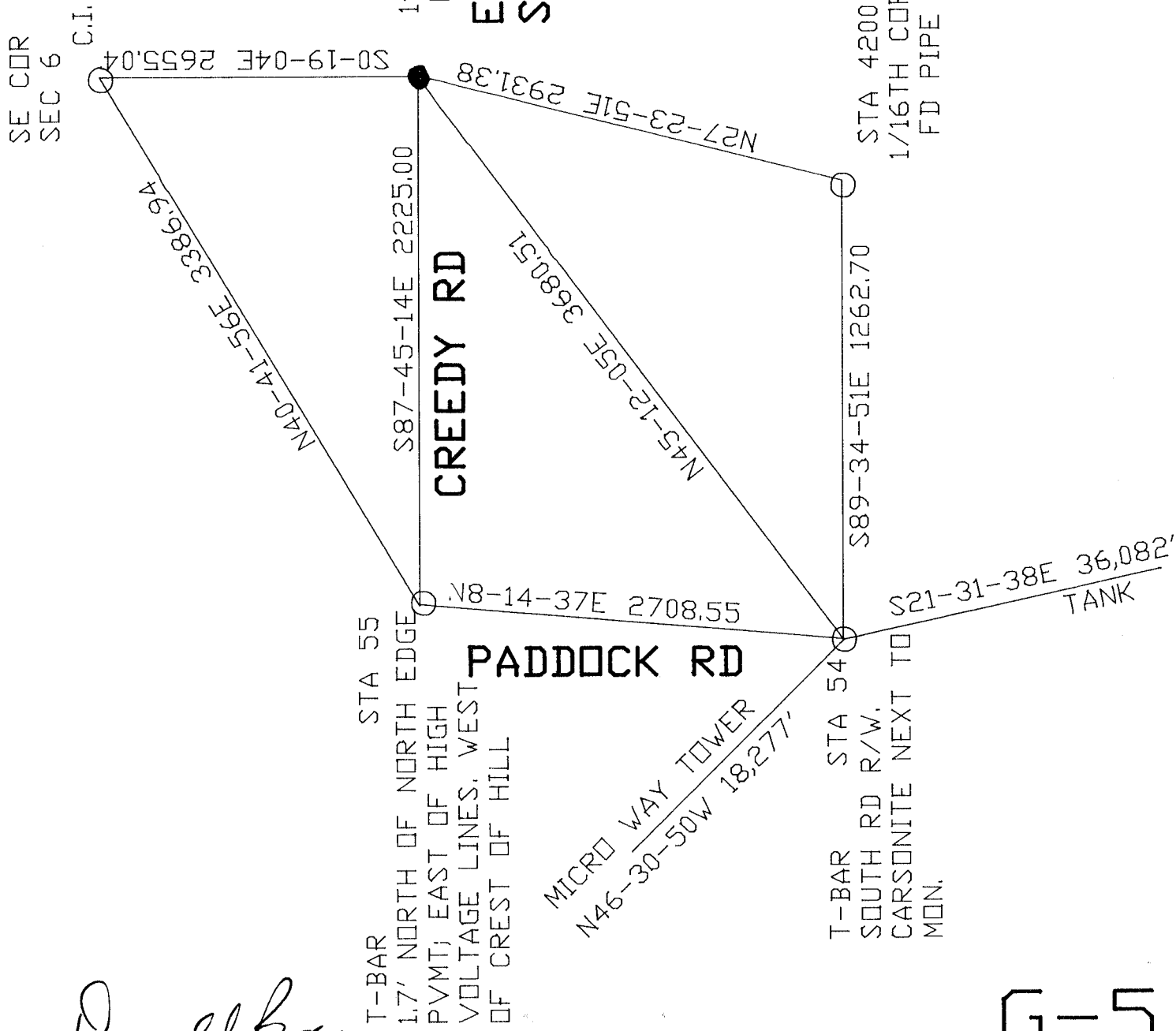
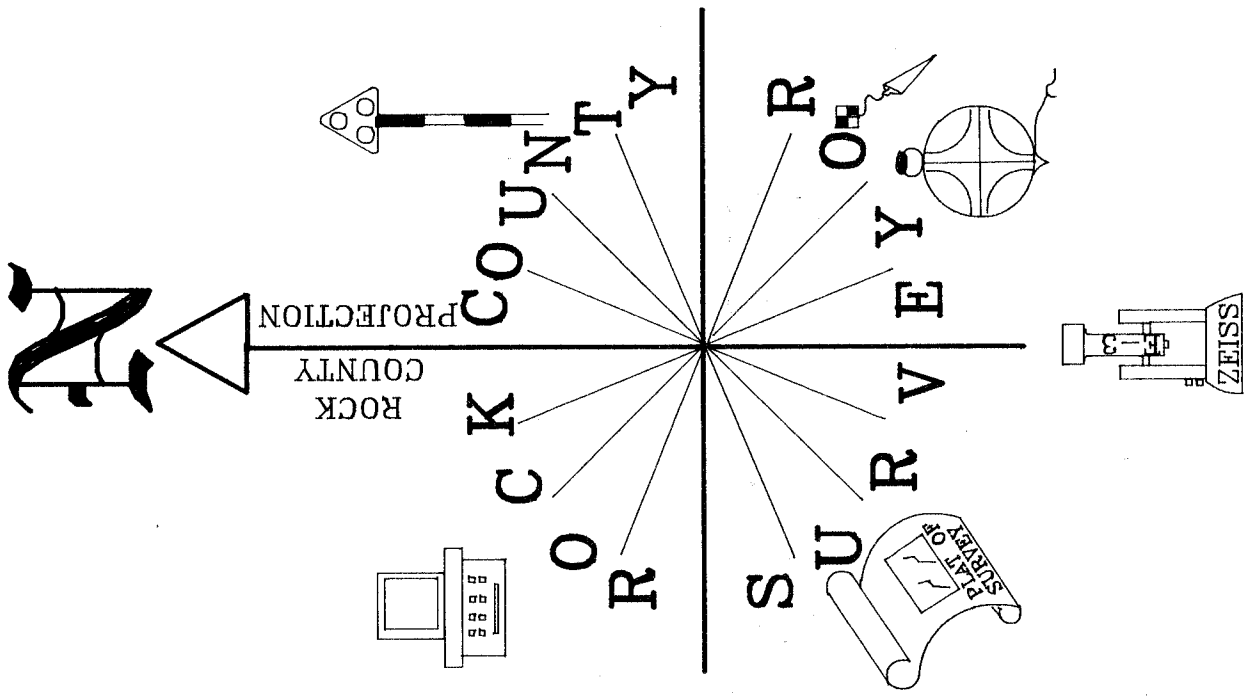
CORNER CODE

EMBOSS LAND SURVEYOR SEAL

A-E 7.08 REQUIREMENT

seal
Donald Barnes
OCT 9, 1998

6-5



Donald Barnes
Oct 29, 1998

G-5