

# U.S. PUBLIC LAND SURVEY MONUMENT RECORD

For Public Land Survey Corners in:

WI ADMINISTRATIVE CODE A-E 7.08 REQUIREMENT

T. 1 N., R. 12 E

CORNER CODE INDEX

A	1	2	3	4	5	6	7	8	9	10	11	12	13	14	15	16	17	18	19	20	21	22	23	24	25
B	6																								
C		5																							
D			A																						
E				3																					
F					2																				
G						1																			
H	1																								
I		8																							
J			9																						
K				10																					
L					11																				
M	18																								
N		11																							
O			16																						
P				15																					
Q					14																				
R						13																			
S	19																								
T		20																							
U			21																						
V				22																					
W					23																				
X						24																			
Y							25																		
Z								26																	
									27																
										28															
											29														
												30													
													31												
														32											
															33										
																34									
																	35								
																		36							

BELOIT TWP  
ROCK COUNTY WI

IF AVAILABLE  
ROCK COUNTY COORDINATES PREFERRED

North 209,057.94 Elev. \_\_\_\_\_

East 484,257.52

Hor. Datum COUNTY Vert. Datum \_\_\_\_\_

LATITUDE \_\_\_\_\_ ELLIPS. HT. \_\_\_\_\_

LONGITUDE \_\_\_\_\_

GPS (X) \_\_\_\_\_ TRAVERSE (X) \_\_\_\_\_

BASED ON THE FOLLOWING CONTROL:

PLACE MONUMENT SYMBOL  AT PROPER LOCATION ON ABOVE INDEX

CORNER MONUMENT

WITNESS MONUMENT

(a)

BEARINGS ARE BASED ON:

FIELD BOOK \_\_\_\_\_ PAGE # \_\_\_\_\_

SHEET 1 OF 2

SHOW A PLAN VIEW DRAWING DEPICTING THE CORNER MONUMENT AND SURROUNDING PHYSICAL FEATURES, INCLUDING THE EXCAVATION AREA AND DEPTH.

PLANNING & ZONING COMMITTEE ADOPTED THE ABOVE FORM ON 12/2/1982

CORNER CODE T-16

BE4500

(B) Describe any record evidence, monument evidence, occupational evidence, testimonial evidence or any other material evidence you considered, and whether the monument was found or placed.

1954 BATTERMAN BK 16 PG 27 CALLS FOR THE E/W CENTER OF SEC 27 AS 7.26' NORTH OF THE CENTER OF THE R/W OF WHIPPLE ST AT THE CENTER OF MC KINLEY AVE. 1324 TO E 1/4 COR SEC 27 & 1319.97 TO CENTER OF SEC 27.

1956 BATTERMAN BK 17 PG 27 CALLS FOR A N/S JOG IN CENTER OF RIGHT OF WAY OF 4' AND A DISTANCE OF 1324.0 TO E 1/4 COR SEC 27.

1957 SHIMEALL BK 19 PG 11 CALLS FOR EXISTING 1" PIPE AT CORNER AND 1324.00 TO E 1/4 COR SEC 27.

C) Was the corner restored through acceptance of (1) an obliterated evidence location, or, (2) a found perpetuated location?

RESTORED CORNER THROUGH ACCEPTANCE OF OBLITERATED EVIDENCE LOCATION BY USING FOUND MONUMENTS.

D) Describe any material discrepancy between the location of the corner as restored or reestablished and the location of that corner as previously restored or reestablished by distance and direction. Show the discrepancy on the plan view drawing under (a), above. Show the distances between the corner as previously restored or reestablished and (1) the corner as restored or reestablished, and (2) to at least 4 of the witness monuments shown on the drawing in (a), above.

(E) Was the corner reestablished through lost corner proportionate methods? If so, show the method, including the directions and distances to other public land survey corners used as evidence or used for proportioning the corner location.

I, DONALD BARNES, hereby certify that the corner location as identified by the corner code index was determined by me under by direction and control and that this U.S. Public Land Survey Monument Record is correct and complete to the best of my knowledge and belief.

seal  
*Donald Barnes*  
Dec 16, 1997

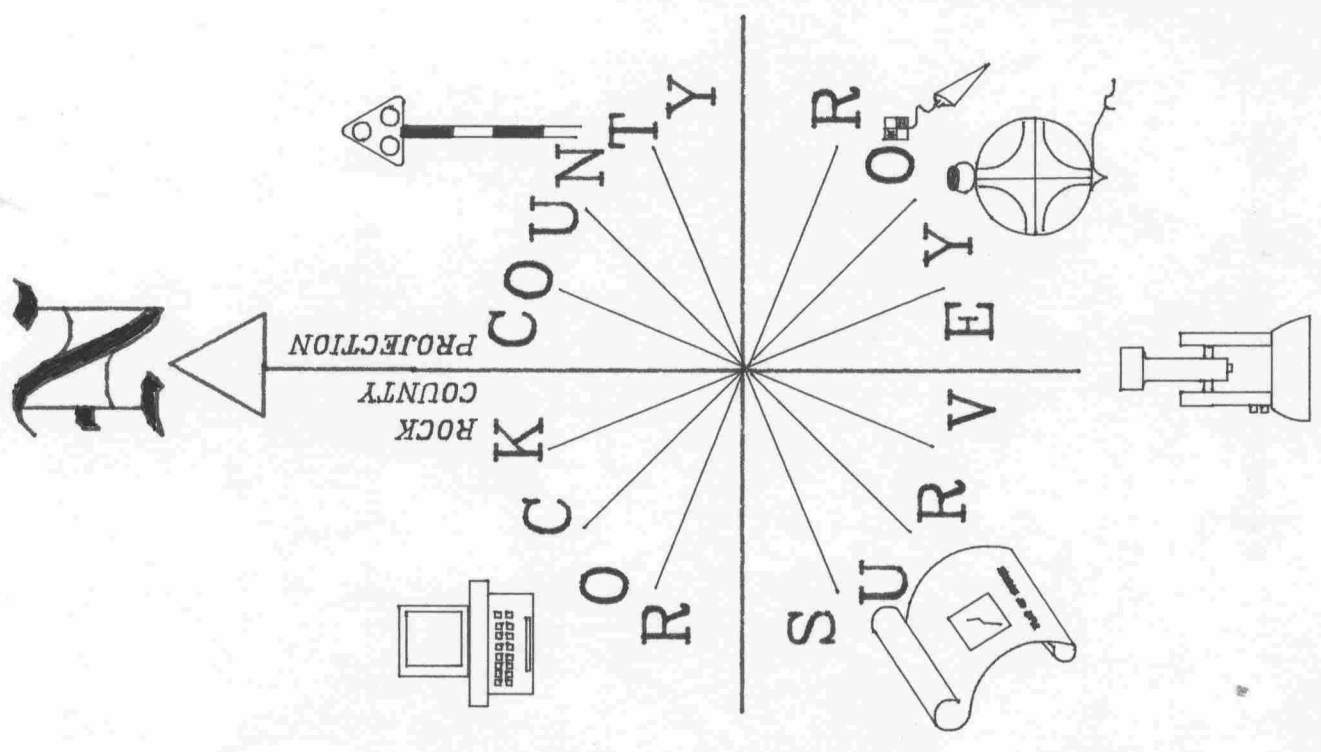
emboss/stamped

Number of included sheets \_\_\_\_\_

A-E 7.08 REQUIREMENT

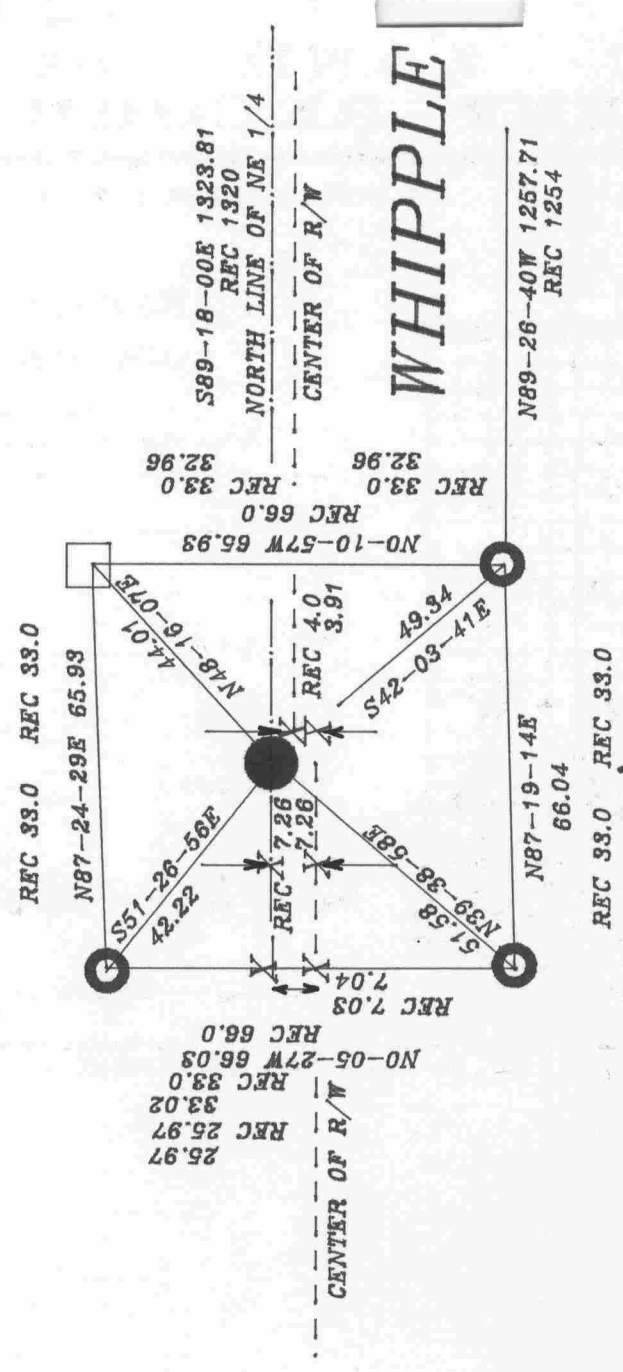
CORNER CODE

T-16



EMBOSSSED SEAL  
*Donald Barnes*  
 12-16-97

T-17  
 16



MCKINLEY ST  
 S 1/16TH COR  
 OF NE 1/4 OF  
 SEC 27

- COMPUTED POSITION OF 1/16TH COR.
- FD PIPE
- FD MON. BOX
- X COMPUTED POSITION

UNLESS OTHERWISE STATED THE SQUARE PIN AT THE E 1/4 COR SEC 27 WAS USED FOR COMPUTATION.

OBSERVATION SHEET #870