

PUBLIC LAND SURVEY MONUMENT RECORD

For Public Land Survey Corners in the

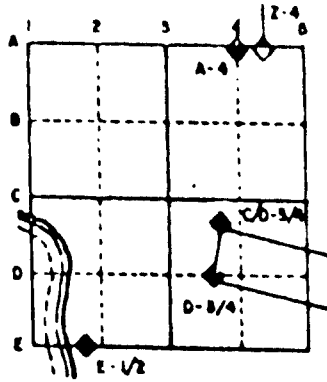
T. 1 N., R. 13 E

CORNER CODE INDEX

	1	2	3	4	5	6	7	8	9	10	11	12	13	14	15	16	17	18	19	20	21	22	23	24	25
A																									
B																									
C	8																								
D					5																				
E																									
F																									
G																									
H	7																								
I																									
J																									
K																									
L																									
M	16																								
N																									
O																									
P																									
Q	19																								
R																									
S																									
T																									
U																									
V																									
W	50																								
X																									
Y																									
Z																									

PLACE MONUMENT SYMBOL (●) AT PROPER LOCATION ON ABOVE INDEX

EXAMPLE



TURTLE TWP
ROCK COUNTY WI

IF AVAILABLE
STATE PLANE COORDINATES

North (Y) 227,121.79 Elevation (Z) _____
 East (X) 520,031.67 Zone _____
 Horizontal Datum _____ Vertical Datum _____

◆ CORNER MONUMENT

○ WITNESS MONUMENT

BEARINGS ARE BASED ON:

(B) any record evidence, ent evidence, occupat evidence, testimonial evidence or any other material evidence you considered, and whether the monument was found or placed.

- 1848 TURTLE TOWNSHIP ROAD RECORDS. BK 1 PG 18 CENTER OF SCHROEDER R/W IS 33.0' WEST OF THE S1/4 CORNER OF SECTION 2 AND RUNS SOUTHERLY PARALLEL & 33.00' WEST OF THE N/S CENTER OF SECTION 11.
- 1859 RUGER VOL 1 PG 91 TOOK NEW WITNESS TREE VAR 6-14 TO SE COR SEC 2.
- 1859 RUGER VOL 1 PG 93 THE SAME AS FIG 5 SEC 2 (PG 91) VAR 6-14 FROM S 1/4 TO SE CORNERS SECTION 2.
- 1861 RUGER VOL 1 PG 151 SUBDIVIDED SECTION 2. SET LIMESTONE AT CENTER OF SEC 2. BLACK OAK 4 S57-15W 93.39' & BLACK OAK 10 N72-50W 71.28' WITH A VAR OF 6-14. S 1/4 CORNER TO SE CORNER OF SECTION 2 IS A VAR OF 6-14.
- 1861 RUGER MAP #4483 USED CORNER TO SUBDIVIDE SECTION 2 2644.95 FROM CENTER OF SECTION 2 TO E 1/4 & W 1/4 CORNERS OF SECTION 2.
- 1864 LOCKE VOL 1 PG 207 FOUND STUMP OF N BT & BYTS TAKEN BY RUGER. 2641.98 TO CENTER OF SECTION 11. (ESTABLISHED CENTER OF SEC 11 BY THE EQUAL DISTANCE METHOD.
- 1865 LOCKE VOL 1 PG 238 FOUND BTS TAKEN BY RUGER. SET L.S. 18X11X7. 1323.30 X 2 (2646.6) TO CENTER OF SEC 11 & 5293.2 TO S 1/4 COR SEC 11. WESTERLY 825.00' TO STAKE WITH LS 15X7X2 ON WEST & LS 12X7X5 ON EAST, 1155.00 TO A STAKE AND 2655.84 TO NE CORNER OF SECTION 11. CENTER 11 TO E 1/4 COR SECTION 11 IS 2642.9 (1321.45 X 2), N 1/4 COR SEC 11 TO CENTER OF 11 IS 2646.6 (1323.30 X 2), & CENTER OF SECTION 11 TO S 1/4 CORNER OF SEC 11 IS 2646.60 (1323.30 X 2).
- 1876 RUGER VOL 2 PG 202 CORNER BY SELF IN FORMER SURVEY. CALLS FOR 1327.92 X 2 (2655.84) TO SE CORNER OF SECTION 2. SUBDIVIDED SECTION 2. 1322.97 X 2 (2645.94) FROM CENTER TO E 1/4 CORNER SECTION 2.
- 1880 LEE VOL 2 PG 306 FOUND STUMP OF SW BT SET DRY OAK STAKE SURROUNDED BY 3 LIMESTONES. FOUND STONE AT CENTER OF SECTION 2 SET BY RUGER. SET STAKE 396' TO THE WEST AND STAKE 429' TO THE EAST.
- 1903 KERCH VOL 3 PG 20 S 1/4 COR SEC 11 TO W 1/16 TH COR OF SE 1/4 OF SEC 11 IS 1330. ANGLE AT S 1/4 COR FROM W 1/16 OF SE 1/4 TO S 1/16TH COR OF SE 1/4 OF SECTION 11 IS 91-19.
- 1970 BATTERMAN JR. VOL 4 PG 475 DUG AND FOUND NOTHING.
- 1974 COMBS CSM VOL 4 PG 68 USES PIPE AT THE N 1/6TH CORNER OF NE 1/4 OF SECTION 11 THAT SHIMEAL SET. DISTANCE FROM NE TO THAT 1/16TH CORNER IS 1316.36'.
- 19?? COMBS CSM VOL 11 PG 337 USES THE NORTH LINE OF THE NE 1/4 OF SECTION 11.
- 1980 LEUENBERGER ANGLE AT S 1/4 CORNER FROM W 1/16 OF SE 1/4 TO POINT ON SOUTH LINE OF SE 1/4 IS 91-23-41 (91-23-21)

DUG & FOUND PART OF OLD EXCAVATION BUT NOTHING ELSE. DUG & FOUND 1 1/4"X16.5" GAS PIPE TO THE EAST.

C) Was the corner restored through acceptance of (1) an obliterated evidence location, or, (2) a found perpetuated location?

CORNER WAS RESTORED THROUGH ACCEPTANCE OF OBLITERATED EVIDENCE LOCATION. PROJECTED THE PIPE FOUND AND THE SE CORNER OF SEC 2 AT RECORD DISTANCE. THIS IS IN HARMONY WITH THE N/S FENCE TO THE WEST AND THE RECORD DISTANCES TO THE SOUTH. THE PIPE THAT I FOUND AT THE S 1/16TH CORNER OF THE SE 1/4 OF SEC 2 IS 2.18' SOUTH OF A LINE BETWEEN THE S 1/4 COR & THE SE CORNERS OF SEC 2. ALSO THE DISTANCES BETWEEN THAT PIPE AND THE SECTION CORNER & 1/4 CORNER IS NOT NEAR TO THE RECORD DISTANCES. THE CORNER IS 37' +/- EAST OF THE CENTER OF THE PAVEMENT OF SHROEDER RD.

Donald Spores
6/13/75

819

I, Donald Barnes, hereby certify that the corner points as identified by the corner code index were, in a field survey on, June 5, 1995, established, re-established, monumented, re-monumented, recovered or restored as expressed below and in conformance with the regulations and rules as required in the current manual of survey instructions of the United States Department of Interior, Bureau of Land Management.

seal

COUNTY SURVEYOR FILING DATA

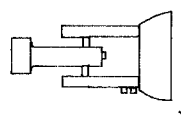
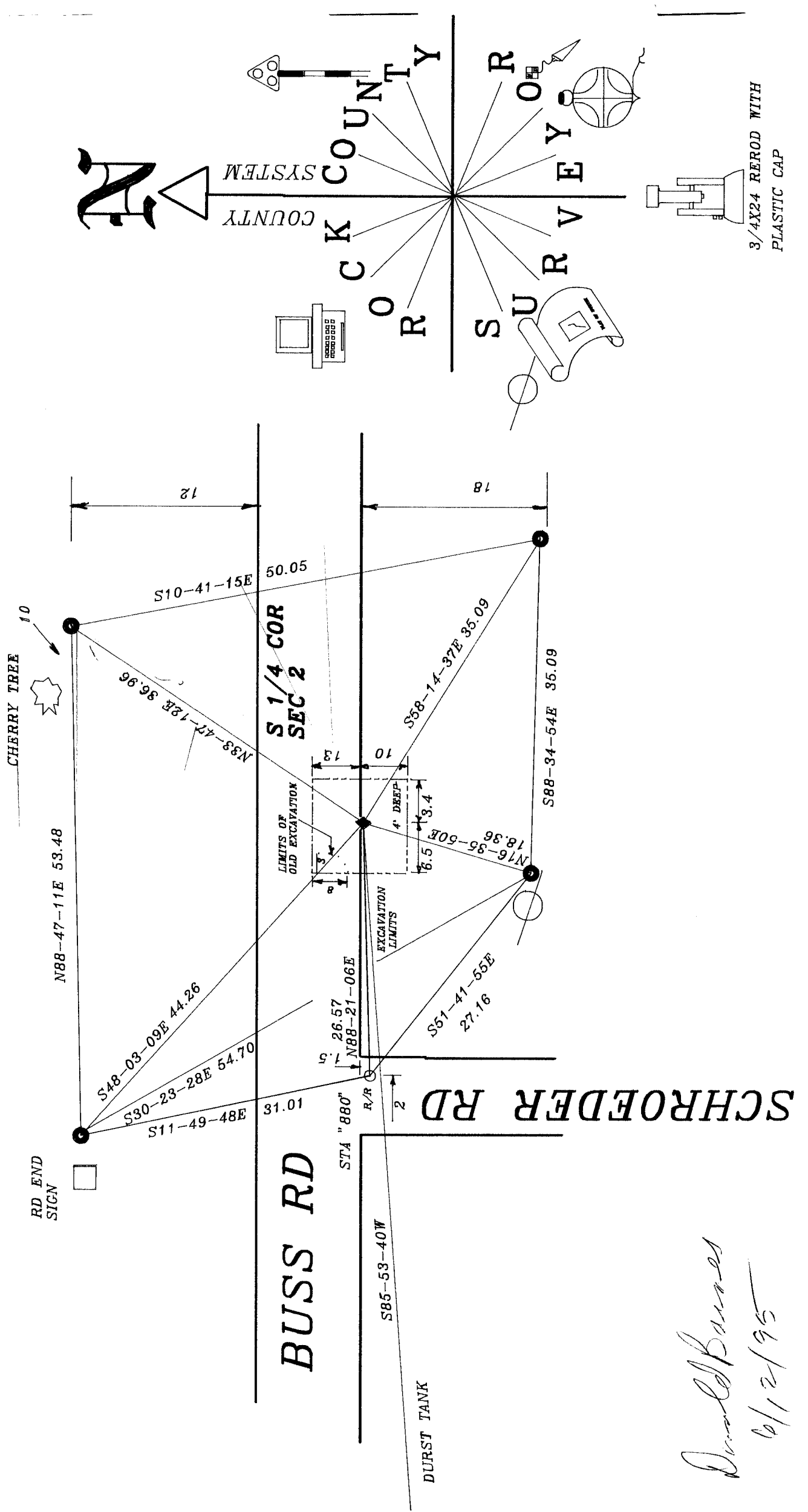
Date of computer entry _____

Date microfilmed _____

Number of included sheets _____
CORNER CODE

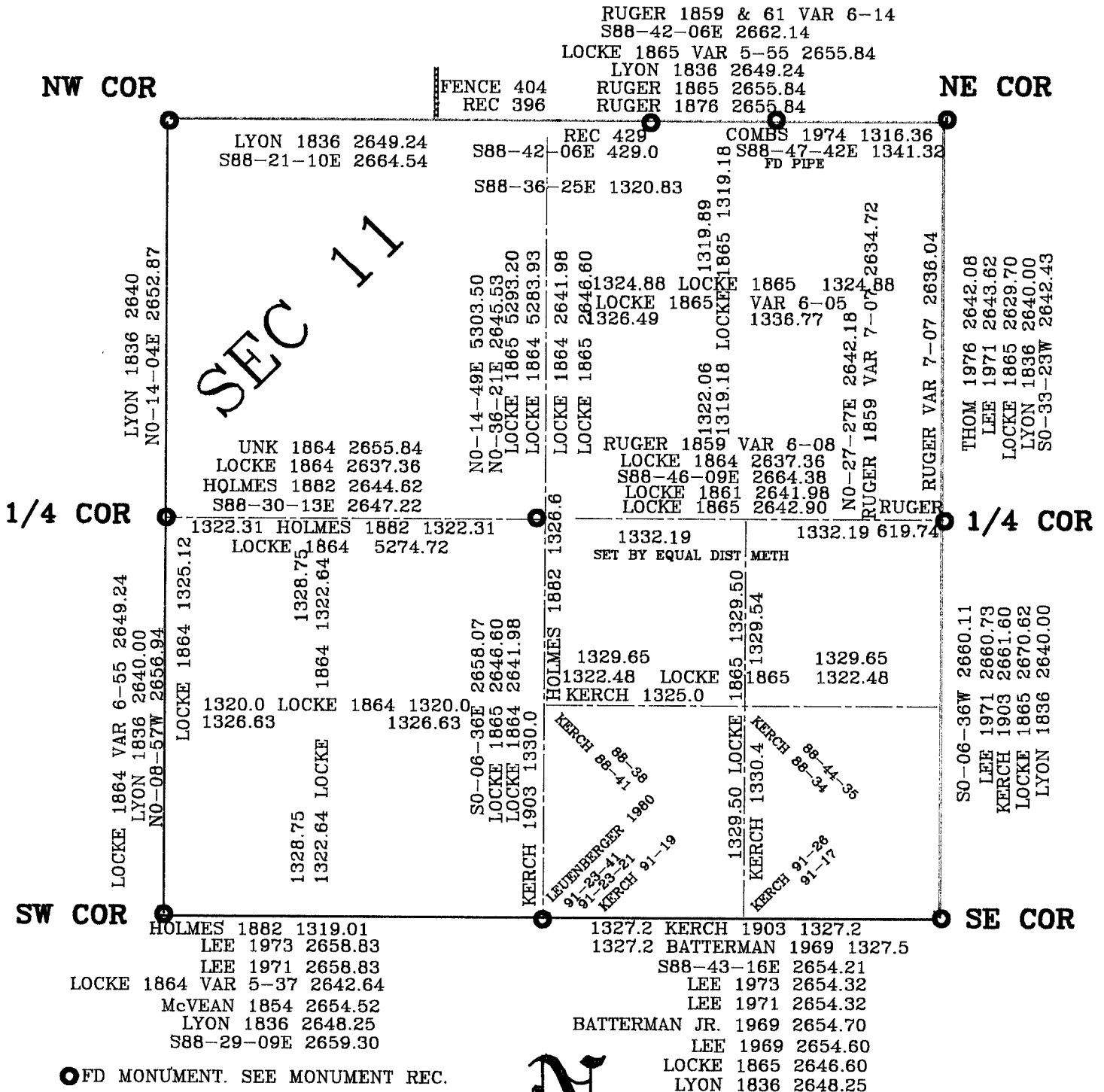
AFFIX YOUR LAND SURVEYOR SEAL

Donald Barnes
6/13/95



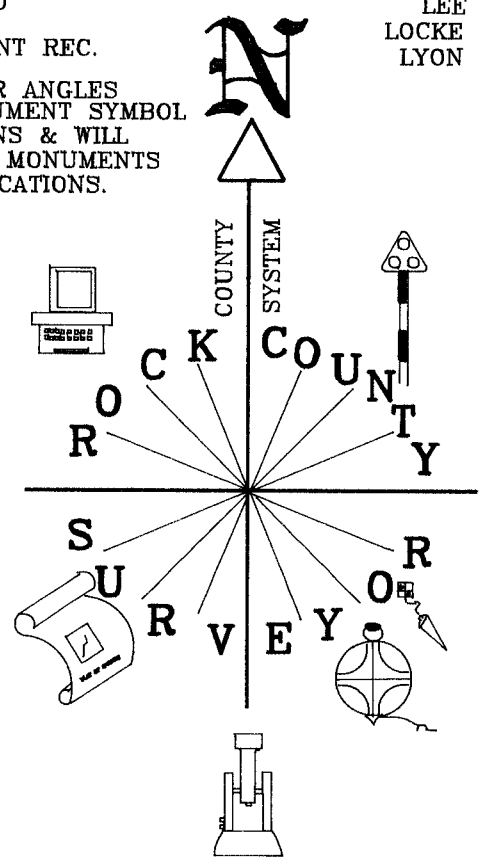
3/4X24 ROD WITH PLASTIC CAP

Donald Barnes
6/12/95



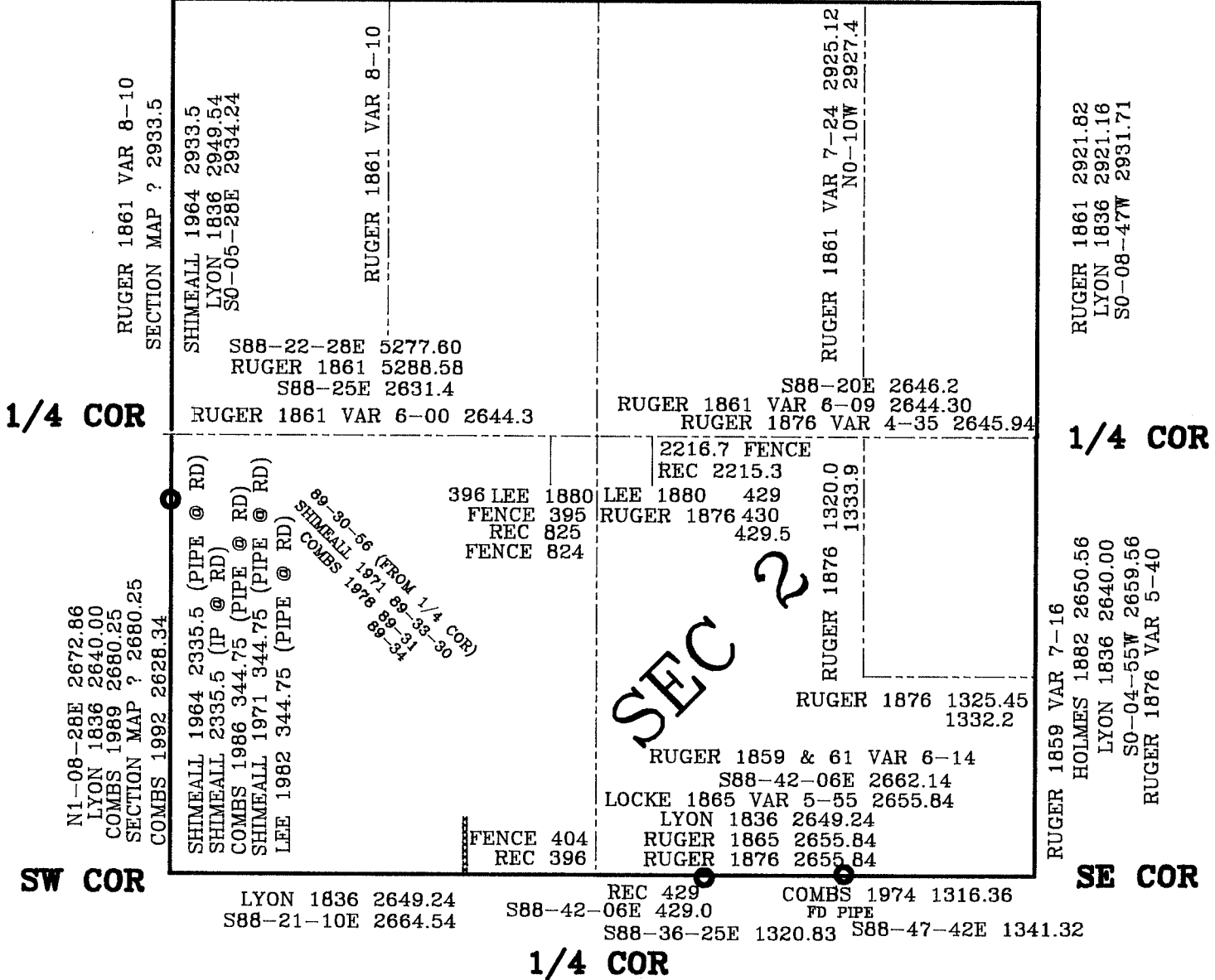
● FD MONUMENT. SEE MONUMENT REC.

DISTANCES/BEARING/ OR ANGLES
THAT ARE NOT TO MONUMENT SYMBOL
ARE COMPUTED POSITIONS & WILL
CHANGE WITH PHYSICAL MONUMENTS
THAT ARE AT THOSE LOCATIONS.

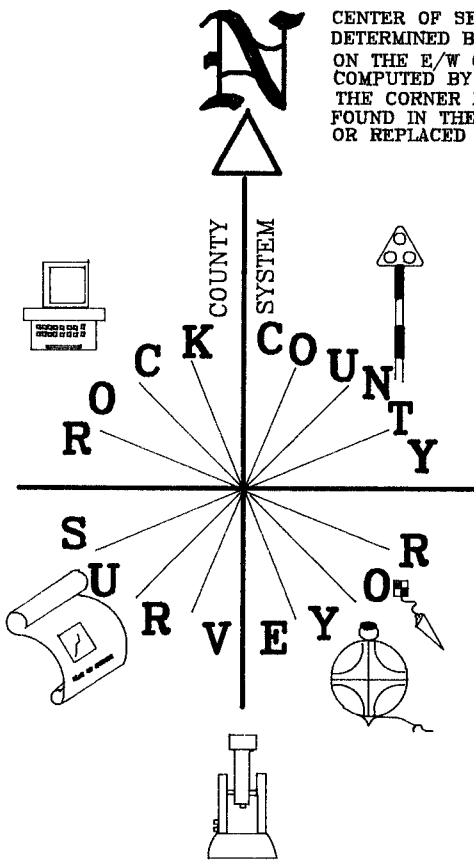


Donald Barnes
6/12/95

NW COR S88-11-26E 2645.00 1/4 COR S88-30-43E 2644.84 NE COR
 RUGER 1861 VAR 6-05 2642.97 RUGER 1861 2642.97



CENTER OF SEC WAS ORIGINALLY DETERMINED BY PLACING IT EQUAL DISTANCE ON THE E/W QUARTER LINE. COMPUTED BY USING OCCUPATION THE CORNER NEEDS TO BE FOUND IN THE FIELD OR REPLACED FROM EXISTING 1/16TH CORNERS.



Donald Barnes
 6/12/95