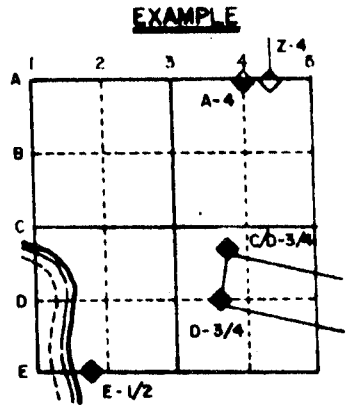


U.S. PUBLIC LAND SURVEY MONUMENT RECORD

For Public Land Survey Corners in the
T. 1 N., R. 13 E

CORNER CODE INDEX

	1	2	3	4	5	6	7	8	9	10	11	12	13	14	15	16	17	18	19	20	21	22	23	24	25
A																									
B																									
C	6																								
D		5																							
E			4																						
F				3																					
G					2																				
H	7																								
I		8																							
J			9																						
K				10																					
L	18																								
M		17																							
N			16																						
O				15																					
P					14																				
Q						13																			
R							12																		
S								11																	
T									10																
U										9															
V											8														
W												7													
X													6												
Y														5											
Z															4										

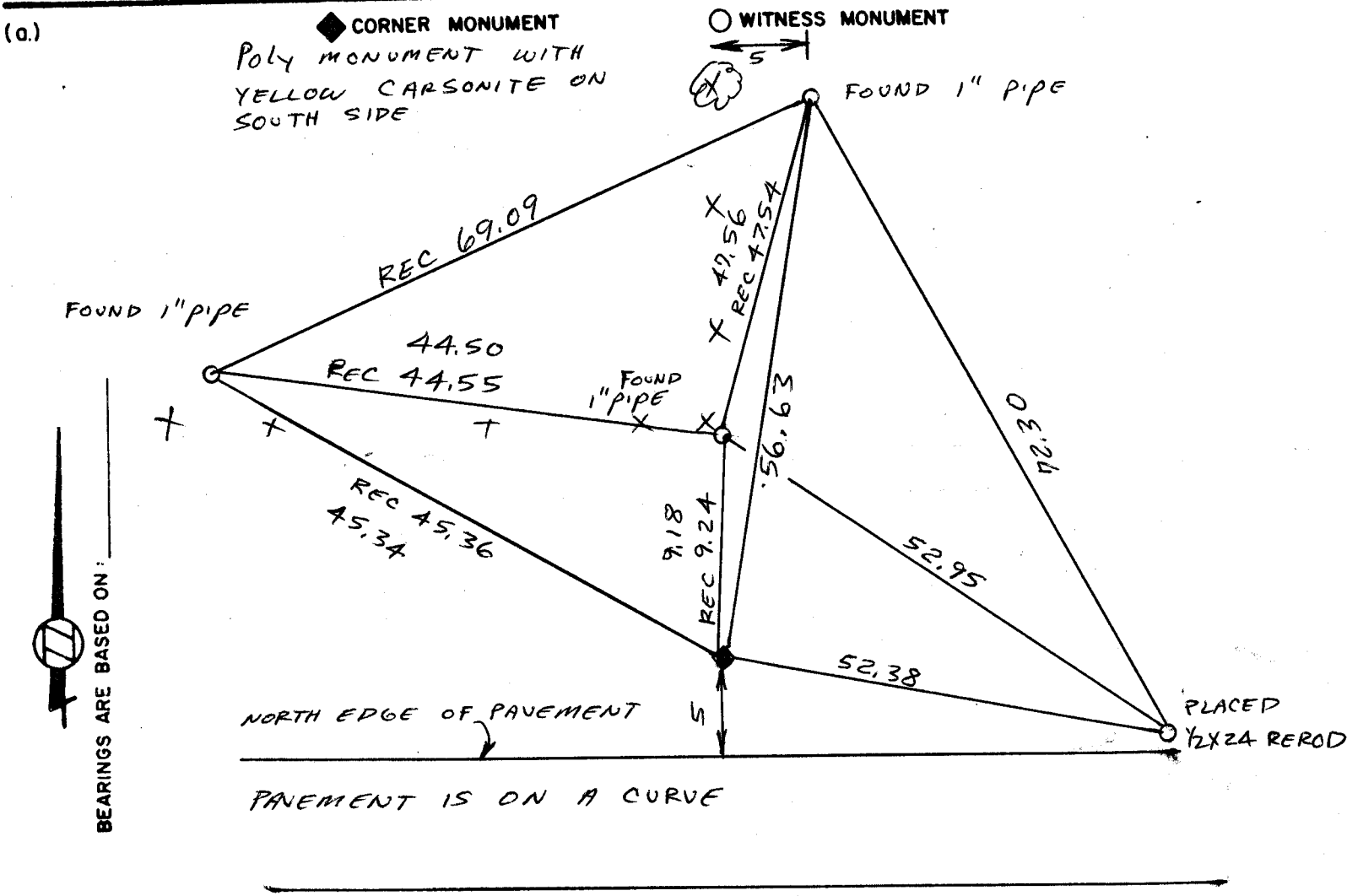


TURTLE TWP
ROCK COUNTY WI

IF AVAILABLE
STATE PLANE COORDINATES

North (Y) 227,480.34 Elevation (Z) _____
 East (X) 506,740.25 Zone _____
 Hor. Datum COUNTY Vert. Datum _____

PLACE MONUMENT SYMBOL (◆) AT PROPER LOCATION ON ABOVE INDEX



MICROFILMED

FIELD BOOK 1 PAGE # 61

SHOW A PLAN VIEW DRAWING DEPICTING THE CORNER MONUMENT AND SURROUNDING PHYSICAL FEATURES, INCLUDING THE EXCAVATION AREA AND DEPTH. THE CORNER MONUMENT SHALL HAVE THE FOLLOWING CHARACTERISTICS: 1) HAVE AT LEAST TWO PREDETERMINED BREAK-OFF POINTS. 2) IF BROKEN, LEAVE A PERMANENTLY MAGNETIZED REMNANT AT THE ORIGINAL POINT. 3) MUST BE EXTENDABLE. 4) THE CAP IS INSCRIBED: ROCK COUNTY SURVEY MONUMENT - PENALTY FOR DISTURBING MARKER. 5) OR AN EXISTING CUT LIMESTONE. AN IRON PIPE 1 1/2" x 4'0" (MINIMUM) MAY BE USED IN AREAS WHERE GROUND WATER IS WITHIN ONE FOOT OF THE SURFACE. IF THE CORNER IS OCCUPIED BY AN IMPROVEMENT (MANHOLE, BURIED CABLE, ETC.) ANY DURABLE, DISTINCT MONUMENT MAY BE USED. CORNERS SHALL BE REFERENCED WITH AT LEAST 4 DURABLE WITNESS MONUMENTS. WITNESS MONUMENTS SHALL BE MADE OF CONCRETE, NATURAL STONE, IRON OR OTHER EQUALLY DURABLE MATERIAL, EXCEPT WOOD. DESCRIBE THE CORNER AND THE WITNESS MONUMENTS.

CORNER CODE:
E 9

(b.) Describe any record evidence, monument evidence, occupational evidence, testimonial evidence or any other material evidence you considered, and whether the monument was found or placed.

SEE SHEET 2

(c.) Was the corner restored through acceptance of (1) an obliterated evidence location, or, (2) a found perpetuated location?

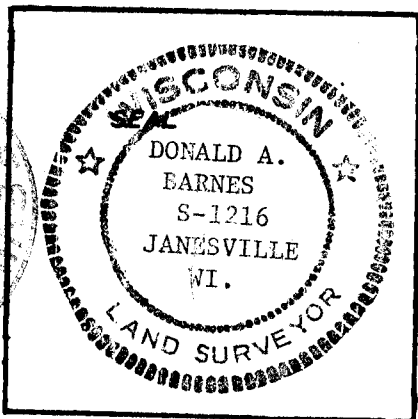
ACCEPTED FOUND PERPETUATED LOCATION

(d.) Describe any material discrepancy between the location of the corner as restored or reestablished and the location of that corner as previously restored or reestablished by distance and direction. Show the discrepancy on the plan view drawing under (c), above. Show the distances between the corner as previously restored or reestablished and (1) the corner as restored or reestablished, and (2) to at least 4 of the witness monuments shown on the drawing in (c), above.

SEE SKETCH AND SHEET 2

(e.) Was the corner reestablished through lost corner proportionate methods? If so, show the method, including the directions and distances to other public land survey corners used as evidence or used for proportioning in determining the corner location.

I, Donald Barnes, hereby certify that the corner points as identified by the corner code index were, in a field survey on DECEMBER 11, 1987 established, re-established, monumented, re-monumented, recovered or restored as expressed below and in conformance with the regulations and rules as required in the current manual of survey instructions of the United States Department of Interior, Bureau of Land Management.



COUNTY SURVEYOR FILING DATA

Date of Computer Entry _____

Date Received _____

Date Microfilmed _____

Treasurer's Receipt No. _____

Number of Included Sheets 2

1 OF 3

AFFIX YOUR LAND SURVEYOR SEAL.

CORNER CODE E 9

U.S. PUBLIC LAND SURVEY MONUMENT RECORD

For Public Land Survey Corners in the

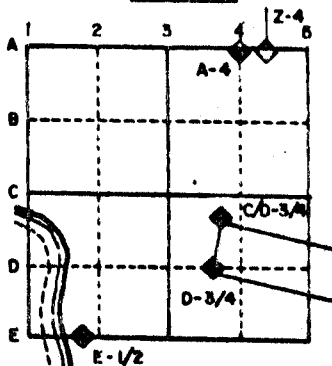
T. 13 N., R. 13 E.

CORNER CODE INDEX

	1	2	3	4	5	6	7	8	9	10	11	12	13	14	15	16	17	18	19	20	21	22	23	24	25
A																									
B																									
C	6																								
D																									
E																									
F																									
G	7																								
H																									
I																									
J																									
K																									
L	18																								
M																									
N																									
O																									
P	19																								
Q																									
R																									
S																									
T	30																								
U																									
V																									
W																									
X	31																								
Y																									
Z																									

PLACE MONUMENT SYMBOL (◆) AT PROPER LOCATION ON ABOVE INDEX

EXAMPLE



TURTLE TWP
ROCK COUNTY WI

IF AVAILABLE
STATE PLANE COORDINATES

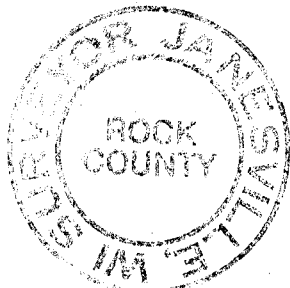
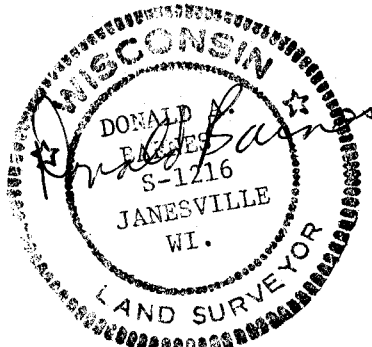
North (Y) _____ Eleve. (Z) _____
 East (X) _____ Zone _____
 Hor. Datum _____ Vert. Datum _____

a.) **◆ CORNER MONUMENT** **○ WITNESS MONUMENT**

- 1848 PAGE 14 OF TOWNSHIP ROAD RECORDS. THE RECORDS STATE THAT A SURVEY WAS CAUSED AND THE CENTER OF THE 4 ROAD HIGHWAY IS 33' SOUTH OF THE CORNER.
- 1846 PAGE 6 OF TOWNSHIP ROAD RECORDS. THE RECORDS STATE THAT A SURVEY WAS CAUSED AND THE CENTER OF THE 4 ROAD HIGHWAY IS 33' SOUTH OF THE CORNER.
- 1853 Mc VEAN VOL 1 PG 19 DOES NOT STATE WHAT HE FOUND OR PLACED. SHOWS A DISTANCE OF 2645.94' TO THE S $\frac{1}{4}$ CORNER OF SECTION 5 AND A DISTANCE OF 2636.70' TO THE E $\frac{1}{4}$ OF SECTION 5.
- 1854 Mc VEAN VOL 1 PG 24 DOES NOT STATE WHAT HE FOUND OR PLACED. SHOWS A DISTANCE OF 5293.86' FROM THE SW CORNER OF SECTION 5.
- 1882 HOLMES VOL 2 PG 356 LARGE GATE POST ON NORTH SIDE OF ROAD. SHOWS A DISTANCE OF 2519.22' TO THE W $\frac{1}{4}$ CORNER OF SECTION 9.
- 1882 LEE VOL 2 PG 368 ASSUMED CORNER TO BE IN LINE OF N&S FENCES.
- 1964 BATTERMAN JR. VOL 4 PG 202 SET A 1" PIPE, SHOWS A DISTANCE OF 2647.68' TO THE E $\frac{1}{4}$ OF SECTION 5 AND 2654+ TO THE S $\frac{1}{4}$ CORNER OF SECTION 5.
- 1964 BATTERMAN JR. VOL 4 PG 203 SET 1" PIPE BY PROPORTIONATE MEASUREMENT FOR N/S LOCATION AND USED FORMER SURVEY IN SECTION 8 BY R.H. BATTERMAN SR. FOR E/W LOCATION. SHOWS A DISTANCE OF 2645.99' TO THE E $\frac{1}{4}$ CORNER OF SECTION 8

BEARINGS ARE BASED ON:
 AT THE W $\frac{1}{4}$ CORNER OF SECTION 9, LEUENBERGER AND MY N/S COORDINATES ARE WITHIN 0.7' OF EACH OTHER. AFTER ANALYSING THE DISTANCES PROVIDED BY LEUENBERGER, OTHER FILED SURVEY DISTANCES, AND FIELD BOOK 129 PAGES 59 AND 61, IT APPEARS THAT ON VOLUME 4 PAGE 203 BATTERMAN'S DISTANCE OF 2645.99' FROM THE W $\frac{1}{4}$ CORNER OF SECTION 9 TO THE PIPE THAT HE PLACED FOR THE N.W. CORNER OF SECTION 9 CONTAINS A BLUNDER. THE 1964 FIELD NOTES SHOWS A DISTANCE OF 2663.00' INSTEAD OF THE 2645.99'. THE FIELD NOTES DATED 11-13-64 ALSO SHOWS THAT THEY FOUND AND REFERENCED SHIMEALL'S PIPE. USING THE SAME PROPORTIONATE METHOD THAT BATTERMAN JR. USED TO CONTROL THE N/S LOCATION, PRODUCES A LOCATION THAT IS WITHIN 0.3' OF SHIMEALL'S PIPE. BASED ON THE BLUNDER AND THE FACT SHIMEALL'S PIPE FITS PROPORTION, I ACCEPTED AND REPLACED SHIMEALL'S PIPE WITH A POLY MONUMENT. PIPE - 2" X 30"

IF THE CENTER OF THE PAVEMENT TO THE EAST AND WEST IS PROJECTED AND INTERSECTED, THEN THE DISTANCE FROM THIS INTERSECTION POINT TO THE MONUMENT IS ABOUT 24'



MICROFILMED

SHEET 2 OF 3

CORNER CODE: E 9

U.S. PUBLIC LAND SURVEY MONUMENT RECORD

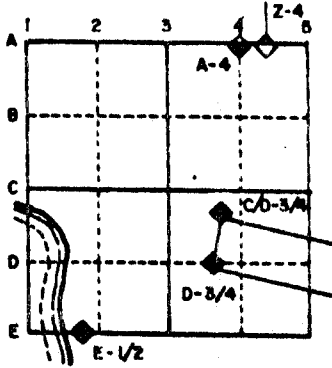
For Public Land Survey Corners in the
T. 1 N., R. 13 E.

CORNER CODE INDEX

	1	2	3	4	5	6	7	8	9	10	11	12	13	14	15	16	17	18	19	20	21	22	23	24	25
A																									
B																									
C	6																								
D																									
E																									
F																									
G	7																								
H																									
J																									
K																									
L	18																								
M																									
N																									
O																									
P	19																								
Q																									
R																									
S																									
T	30																								
U																									
V																									
W																									
X																									
Y	31																								
Z																									

PLACE MONUMENT SYMBOL (◆) AT PROPER LOCATION ON ABOVE INDEX

EXAMPLE

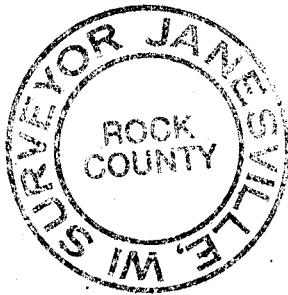


TURTLE TWP
ROCK COUNTY WI

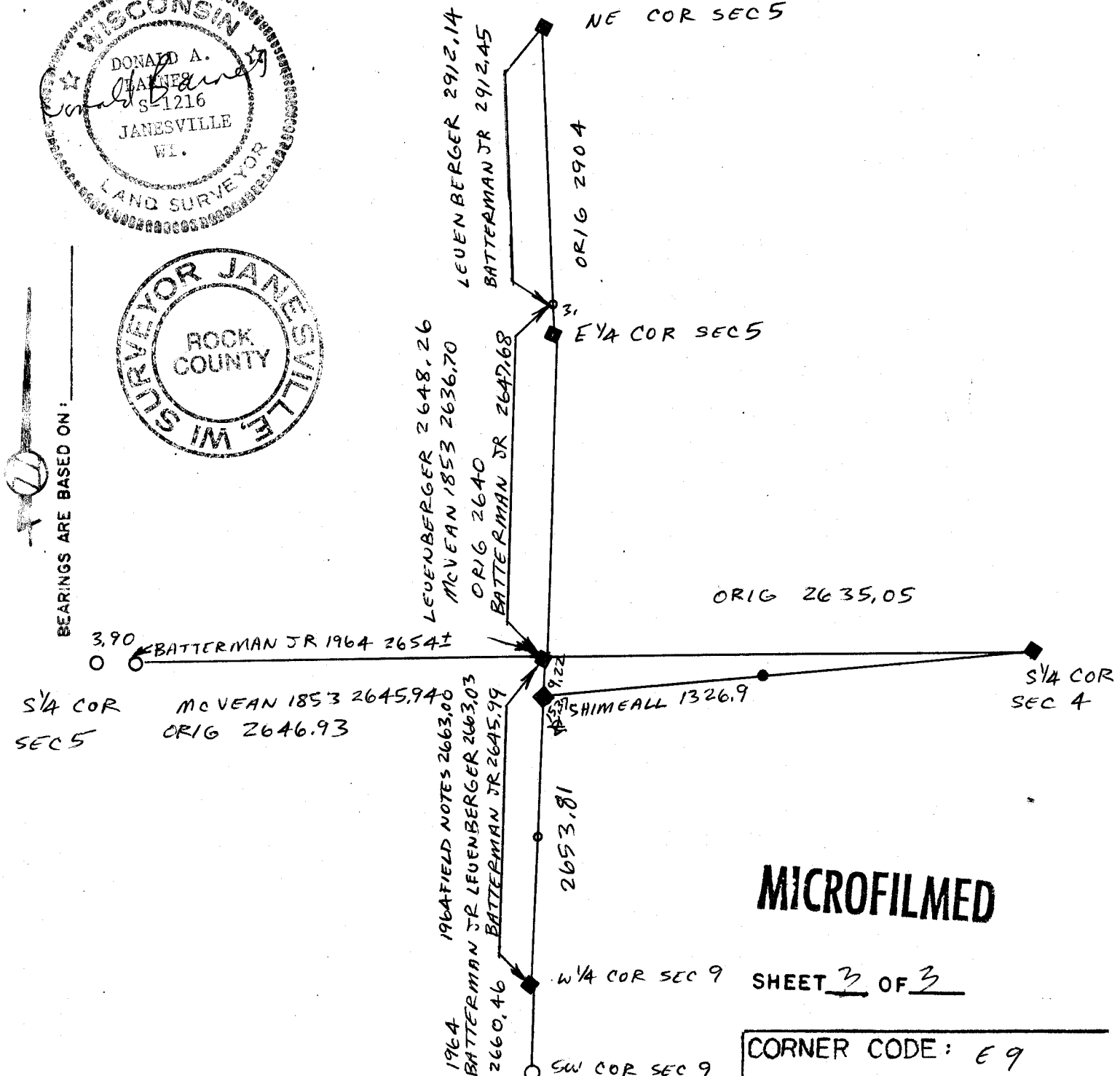
IF AVAILABLE
STATE PLANE COORDINATES

North (Y) _____ Eleve. (Z) _____
 East (X) _____ Zone _____
 Hor. Datum _____ Vert. Datum _____

(a.) **◆ CORNER MONUMENT** **○ WITNESS MONUMENT**



BEARINGS ARE BASED ON:



MICROFILMED

SHEET 3 OF 3

CORNER CODE: E 9