

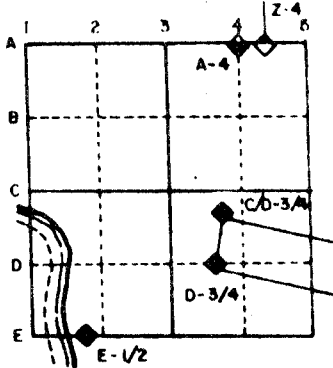
U.S. PUBLIC LAND SURVEY MONUMENT RECORD

For Public Land Survey Corners in the
T. 1 N., R. 13 E

CORNER CODE INDEX

	1	2	3	4	5	6	7	8	9	10	11	12	13	14	15	16	17	18	19	20	21	22	23	24	25
A																									
B																									
C	6																								
D																									
E																									
F																									
G	7	8	9	10	11	12																			
H																									
J																									
K																									
L	13	14	15	16	17	18	19	20	21	22	23	24	25												
M																									
N																									
O																									
P	19	20	21	22	23	24																			
Q																									
R																									
S																									
T	30	29	28	27	26	25																			
U																									
V																									
W																									
X																									
Y	31	32	33	34	35	36																			
Z																									

EXAMPLE



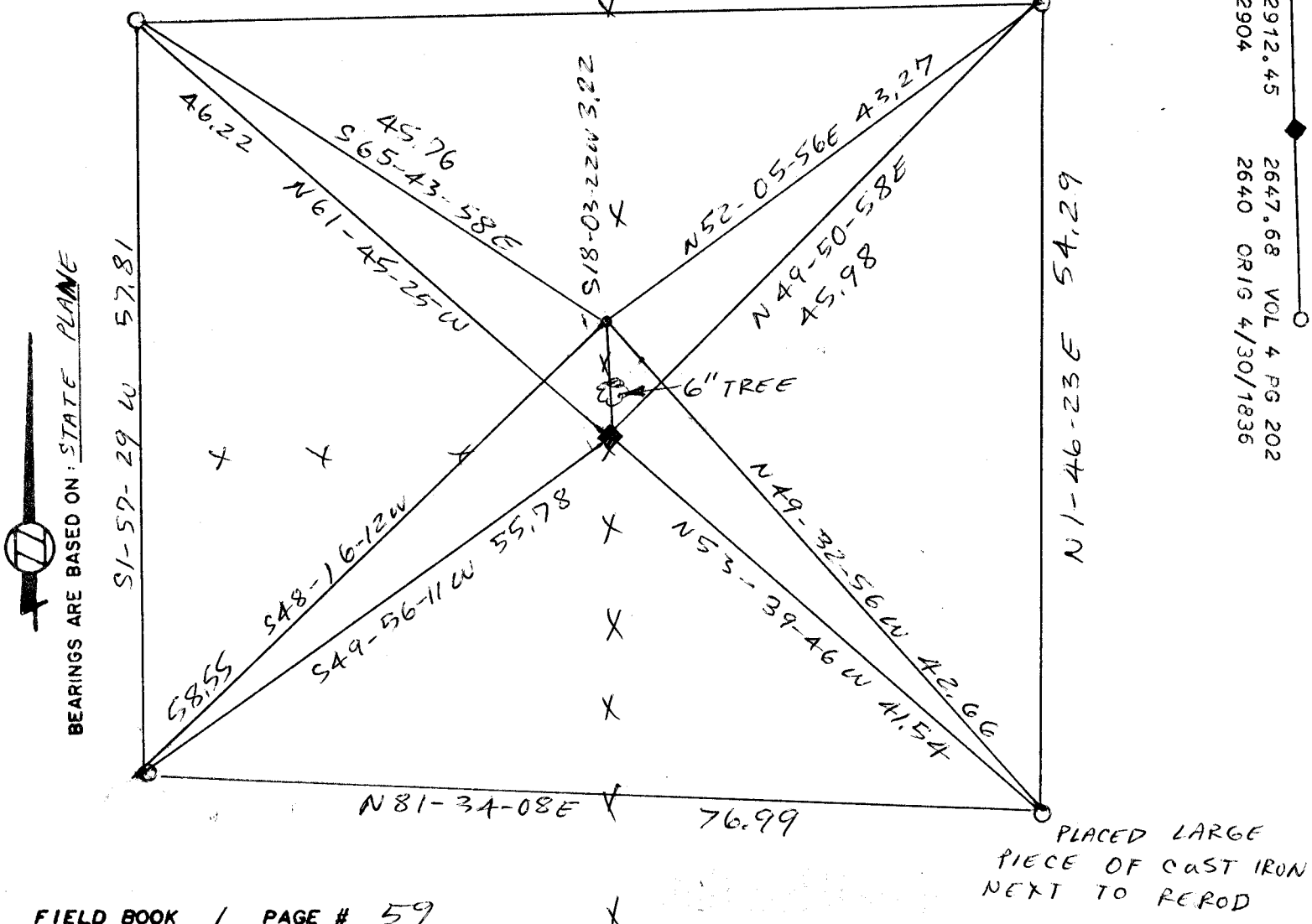
TURTLE _____ TWP
ROCK COUNTY WI

IF AVAILABLE
STATE PLANE COORDINATES

North (Y) 211589 Eleve. (Z) _____
 East (X) 2276701.1 Zone _____
 Hor. Datum _____ Vert. Datum _____

PLACE MONUMENT SYMBOL (◆) AT PROPER LOCATION ON ABOVE INDEX

(a) **◆ CORNER MONUMENT** **○ WITNESS MONUMENT** 1/2 X 24 RE-ROD 15" DEEP
 Poly Monument N 84-08-51E 176.26



FIELD BOOK 1 PAGE # 59

SHOW A PLAN VIEW DRAWING DEPICTING THE CORNER MONUMENT AND SURROUNDING PHYSICAL FEATURES, INCLUDING THE EXCAVATION AREA AND DEPTH. THE CORNER MONUMENT SHALL HAVE THE FOLLOWING CHARACTERISTICS: 1) HAVE AT LEAST TWO PREDETERMINED BREAK-OFF POINTS. 2) IF BROKEN, LEAVE A PERMANENTLY MAGNETIZED REMNANT AT THE ORIGINAL POINT. 3) MUST BE EXTENDABLE. 4) THE CAP IS INSCRIBED ROCK COUNTY SURVEY MONUMENT - PENALTY FOR DISTURBING MARKER. 5) OR AN EXISTING CUT LIMESTONE. AN IRON PIPE 1 1/2" X 4'0" (MINIMUM) MAY BE USED IN AREAS WHERE GROUND WATER IS WITHIN ONE FOOT OF THE SURFACE. IF THE CORNER IS OCCUPIED BY AN IMPROVEMENT (MANHOLE, BURIED CABLE, ETC.) ANY DURABLE, DISTINCT MONUMENT MAY BE USED. CORNERS SHALL BE REFERENCED WITH AT LEAST 4 DURABLE WITNESS MONUMENTS. WITNESS MONUMENTS SHALL BE MADE OF CONCRETE, NATURAL STONE, IRON OR OTHER EQUALLY DURABLE MATERIAL, EXCEPT WOOD. DESCRIBE THE CORNER AND THE WITNESS MONUMENTS.

CORNER CODE: C 9

(b.) Describe any record evidence, monument evidence, occupational evidence, testimonial evidence or any other material evidence you considered, and whether the monument was found or placed

- 1. 1964 VOL 4-202 R.H. BATTERMAN JR. SET 1" PIN FOUND PIN 3.0' SOUTH & 1.5' WEST
- 2. 1964 VOL 4-203 R.H. BATTERMAN JR. SET 1" PIPE IN LINE WITH CENTER & E1/4 OF SEC4 & ON LINE BETWEEN THE NW & SW CORNERS OF SECTION 4.
- 3. 1956 SHIMEALL FIELD BOOK 9 PAGE 35 (IN HAROLD COMBS OFFICE). FIELD NOTES SHOWS THAT HE PLACED A PIN BUT DOES NOT STATE WHAT HE FOUND NOR HOW HE DETERMINED THE LOCATION. HE MADE SEVERAL SURVEYS IN SECTION 5 AND 4 USING THIS PIN. LEUENBERGER STATED THAT HE DID NOT FIND ANY SURVEYS IN THE R.H. BATTERMAN OFFICE THAT USED BATTERMAN JR'S PIPE. ALSO THERE WERE NO SURVEYS IN THIS OFFICE THAT USED THE PIPE. SINCE THE SW CORNER OF SECTION 4 THAT BATTERMAN JR. PLACED IS NOT ACCEPTED AS THE CORNER, THEN THE PIPE WOULD NOT BE ON LINE WITH THE NW CORNER OF SECTION 4 AS STATED IN VOL4 PG 203. USING THE PIN AND THE EAST QUARTER CORNER OF SECTION 4 WOULD PLACE THE CENTER OF SECTION OFF THE STRAIGHT LINE BY ABOUT 1.6' WHICH IS WITHIN THE LEGAL ALLOWABLE ERROR OF RUGER'S PERIOD. I REPLACED SHIMEALL'S PIN WITH A FOLY MONUMENT AND DROVE THE PIPE ABOUT 1' DEEP. PLACED WHITE PLASTIC POST NEXT TO MONUMENT.

(c.) Was the corner restored through acceptance of (1) an obliterated evidence location, or, (2) a found perpetuated location?

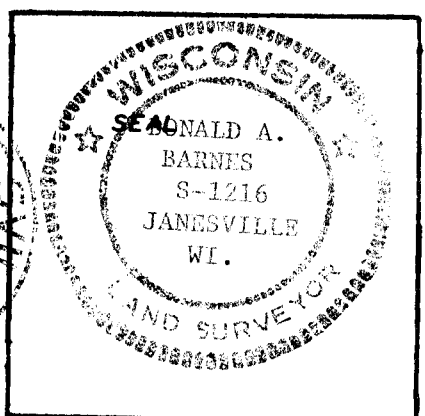
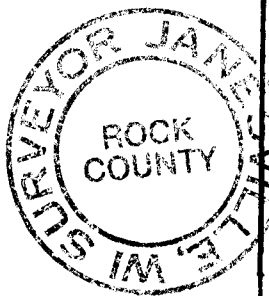
Accepted SHIMEALL'S PIN

(d.) Describe any material discrepancy between the location of the corner as restored or reestablished and the location of that corner as previously restored or reestablished by distance and direction. Show the discrepancy on the plan view drawing under (a), above. Show the distances between the corner as previously restored or reestablished and (1) the corner as restored or reestablished, and (2) to at least 4 of the witness monuments shown on the drawing in (a), above.

YES SEE DRAWING.

(e.) Was the corner reestablished through lost corner proportionate methods? If so, show the method, including the directions and distances to other public land survey corners used as evidence or used for proportioning in determining the corner location.

I, Donald Barnes, hereby certify that the corner points as identified by the corner code index were, in a field survey on Dec 4 1987, established, re-established, monumented, re-monumented, recovered or restored as expressed below and in conformance with the regulations and rules as required in the current manual of survey instructions of the United States Department of Interior, Bureau of Land Management.



COUNTY SURVEYOR FILING DATA

Date of Computer Entry _____

Date Received _____

Date Microfilmed _____

Treasurer's Receipt No. _____

Number of Included Sheets _____

AFFIX YOUR LAND SURVEYOR SEAL. CORNER CODE C 9