

U.S. PUBLIC LAND SURVEY MONUMENT RECORD

For Public Land Survey Corners in the

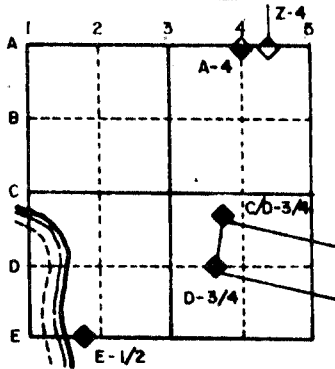
T. 1 N., R. 13 E.

CORNER CODE INDEX

	2	3	4	5	6	7	8	9	10	11	12	13	14	15	16	17	18	19	20	21	22	23	24	25
A								◆																
B																								
C	6																							
D		5																						
E			4																					
F				3																				
G					2																			
H																								
I	7																							
J		8																						
K			9																					
L				10																				
M					11																			
N						12																		
O	18																							
P		17																						
Q			16																					
R				15																				
S					14																			
T						13																		
U																								
V																								
W																								
X	19																							
Y		20																						
Z			21																					
				22																				
					23																			
						24																		
							25																	
								26																
									27															
										28														
											29													
												30												
													31											
														32										
															33									
																34								
																	35							
																		36						

PLACE MONUMENT SYMBOL (◆) AT PROPER LOCATION ON ABOVE INDEX

EXAMPLE



TURTLE TWP
ROCK COUNTY WI

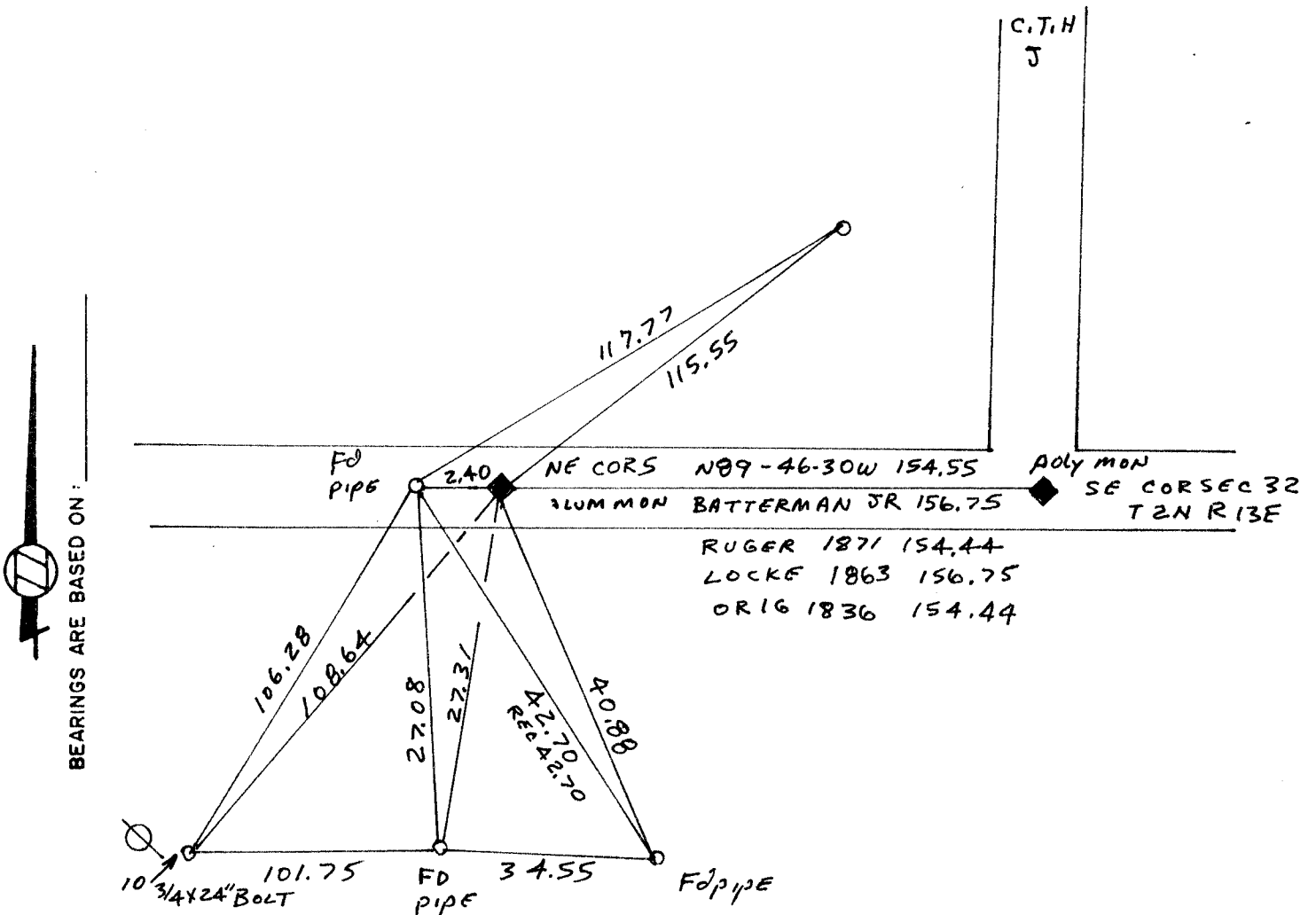
IF AVAILABLE
STATE PLANE COORDINATES

North (Y) _____ Eleve. (Z) _____
 East (X) _____ Zone _____
 Hor. Datum _____ Vert. Datum _____

(a.)

◆ CORNER MONUMENT

○ WITNESS MONUMENT



LA PRAIRIE BOOK
FIELD BOOK 3 PAGE # 28

SHOW A PLAN VIEW DRAWING DEPICTING THE CORNER MONUMENT AND SURROUNDING PHYSICAL FEATURES, INCLUDING THE EXCAVATION AREA AND DEPTH. THE CORNER MONUMENT SHALL HAVE THE FOLLOWING CHARACTERISTICS: 1) HAVE AT LEAST TWO PREDETERMINED BREAK-OFF POINTS. 2) IF BROKEN, LEAVE A PERMANENTLY MAGNETIZED REMNANT AT THE ORIGINAL POINT. 3) MUST BE EXTENDABLE. 4) THE CAP IS INSCRIBED: ROCK COUNTY SURVEY MONUMENT - PENALTY FOR DISTURBING MARKER. 5) OR AN EXISTING CUT LIMESTONE. AN IRON PIPE 1/2" x 4'0" (MINIMUM) MAY BE USED IN AREAS WHERE GROUND WATER IS WITHIN ONE FOOT OF THE SURFACE. IF THE CORNER IS OCCUPIED BY AN IMPROVEMENT (MANHOLE, BURIED CABLE, ETC.) ANY DURABLE, DISTINCT MONUMENT MAY BE USED. CORNERS SHALL BE REFERENCED WITH AT LEAST 4 DURABLE WITNESS MONUMENTS. WITNESS MONUMENTS SHALL BE MADE OF CONCRETE, NATURAL STONE, IRON OR OTHER EQUALLY DURABLE MATERIAL, EXCEPT WOOD. DESCRIBE THE CORNER AND THE WITNESS MONUMENTS.

CORNER CODE:

A 9

- (b.) Describe any record evidence, monument evidence, occupational evidence, testimonial evidence or any other material evidence you considered, and whether the monument was found or placed.
- 1) APRIL 30 1836 ORSON LYON PLACED WOOD POST 154.44' WEST OF THE SE COR SEC 32 T2N R13E.
 - 2) S.D. LOCKE 1863 SHOWS A JOG OF 156.75 BUT DOES NOT STATE WHAT HE FOUND OR IF HE PLACED ANYTHING AT THE CORNER. HE WAS DOING A SURVEY IN SECTION 32 T2N R13E.
 - 3) RUGER 1871 FIELD NOTES DO NOT CALL FOR THE CORNER BUT THE REMONUMENTATION PLAT CALLS FOR A 154.44' JOG.
 - 4) BATTERMAN JR 1964 CALLS FOR A 156.75 JOG. HE STATES HE SET THE CORNER FROM THE CORNERS ALONG THE SOUTH LINE OF SECTION OF 32.

I PLACED A POLY MONUMENT ON LINE WITH THE SE & S 1/4 CORNERS OF SECTION 32 AND AT THE ORIGINAL GOVERNMENT JOG DISTANCE OF 154.~~44~~
44

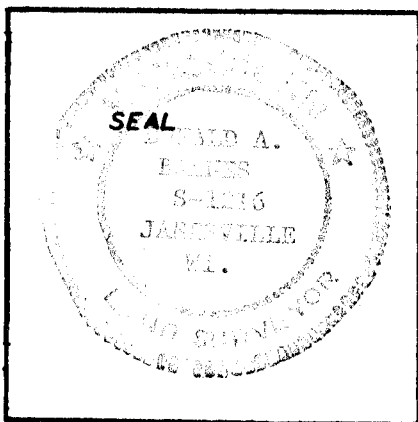
- (c.) Was the corner restored through acceptance of (1) an obliterated evidence location, or, (2) a found perpetuated location?

- (d.) Describe any material discrepancy between the location of the corner as restored or reestablished and the location of that corner as previously restored or reestablished by distance and direction. Show the discrepancy on the plan view drawing under (a), above. Show the distances between the corner as previously restored or reestablished and (1) the corner as restored or reestablished, and (2) to at least 4 of the witness monuments shown on the drawing in (a), above.

FOUND A PIPE WHICH IS 2.40' WEST OF THE CORNER. BATTERMAN JR.'S JOG OF 156.75 IS IN HARMONY WITH LOCKE'S RECORDED DISTANCE BUT NOT THE ORIGINAL GOVERNMENT JOG DISTANCE.

- (e.) Was the corner reestablished through lost corner proportionate methods? If so, show the method, including the directions and distances to other public land survey corners used as evidence or used for proportioning in determining the corner location.

I, Donald Barnes, hereby certify that the corner points as identified by the corner code index were, in a field survey on APRIL 18 1986, established, re-established, monumented, re-monumented, recovered or restored as expressed below and in conformance with the regulations and rules as required in the current manual of survey instructions of the United States Department of Interior, Bureau of Land Management.



COUNTY SURVEYOR FILING DATA

Date of Computer Entry _____

Date Received _____

Date Microfilmed _____

Treasurer's Receipt No. _____

Number of Included Sheets _____

AFFIX YOUR LAND SURVEYOR SEAL. CORNER CODE A9