

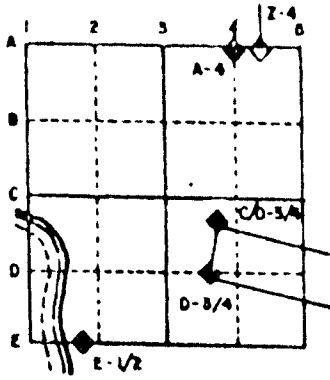
U.S. PUBLIC LAND SURVEY MONUMENT RECORD

For Public Land Survey Corners in the
T. 1N., R. 12E.

CORNER CODE INDEX

1	2	3	4	5	6	7	8	9	10	11	12	13	14	15	16	17	18	19	20	21	22	23	24	25
A																								
B	6	5	4	3	2																			
C																								
D																								
E																								
F																								
G	7	8	9	10	11	12																		
H																								
I																								
J																								
K	16	17	18	15	14	13																		
L																								
M																								
N																								
O																								
P	19	20	21	22	23	24																		
Q																								
R																								
S																								
T	30	29	28	27	26	25																		
U																								
V																								
W																								
X																								
Y	31	32	33	34	35	36																		
Z																								

EXAMPLE



BELOIT TWP
ROCK COUNTY WI

IF AVAILABLE
STATE PLANE COORDINATES

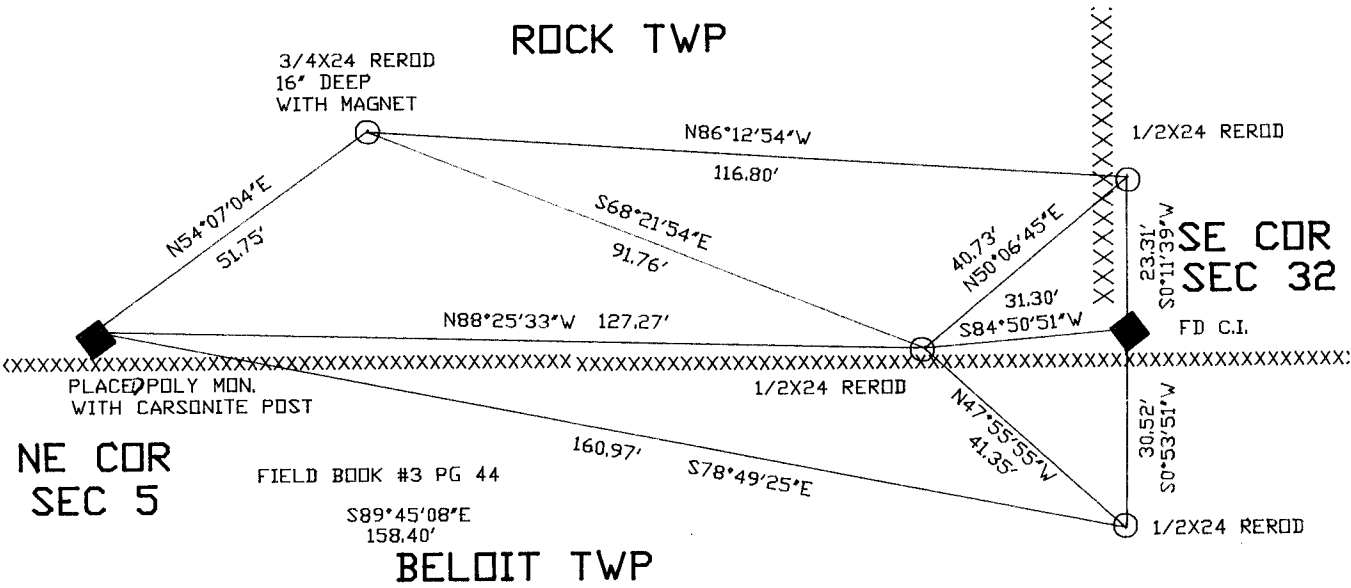
North (Y) 233,289.80 Elev. (Z) _____
East (X) 475,127.90 Zone _____
Hor. Datum COUNTY Vert. Datum _____

PLACE MONUMENT SYMBOL (◆) AT PROPER
LOCATION ON ABOVE INDEX

◆ CORNER MONUMENT

○ WITNESS MONUMENT

BEARINGS ARE BASED ON: ROCK TWP PROJECT



SHEET ___ OF ___

CORNER CODE: A9

(B) Describe any record evidence, monument evidence, occupational evidence, testimonial evidence or any other material evidence you considered, and whether the monument was found or placed.

1834 ORIG SURV.INT. N. BDY IN MARSH 158.40' WEST OF POST. SET POST FOR COR TO SECS 4&5 AND RAISED MOUND. CALLS FOR 2900.04 TO W 1/4 CORNER OF SEC 4.

1851 McVEAN VOL 1 PG 1 CALLS FOR 2909.94 TO W 1/4 CORNER OF SECTION 4.

1971 LEE VOL 4 PG 539 PLACED CAST IRON MONUMENT AT SE CORNER OF SECTION 32. CALLS FOR THE NE CORNER OF SECTION 5 AS WEST 158.40.

1975 LEE CSM VOL 5 PG 64 CALLS FOR AN ANGLE OF 90-49-15 AT THE W 1/4 CORNER OF SECTION 4 FROM THE NW CORNER OF SECTION 4 TO THE CENTER OF SECTION 4.

1980 BARNES VOL 6 PG 108 CALLS FOR RECORD DISTANCES. LEE 1971 2916.68 TO THE W 1/4 CORNER OF SECTION 4.

1981 BARNES VOL 6 PG 143 CALLS FOR RECORD DISTANCES AND N1-21W 2916.2 TO THE COMPUTED POSITION.

DUG AND FOUND NOTHING. PLACED POLY MONUMENT ON LINE WITH SE CORNER AND THE SOUTH QUARTER CORNER OF SECTION 32 AT ORIGINAL RECORD DISTANCE. PLACED CARSONITE POST. MONUMENT IS ON E/W FENCE LINE.

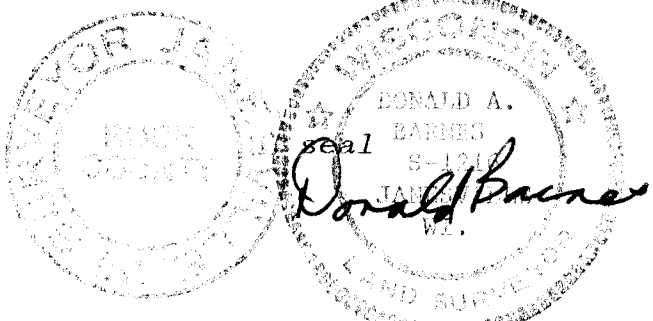
C) Was the corner restored through acceptance of (1) an obliterated evidence location, or, (2) a found perpetuated location?

RESTORED MONUMENT THROUGH ACCEPTANCE OF OBLITERATED EVIDENCE LOCATION.

D) Describe any material discrepancy between the location of the corner as restored or reestablished and the location of that corner as previously restored or reestablished by distance and direction. Show the discrepancy on the plan view drawing under (a), above. Show the distances between the corner as previously restored or reestablished and (1) the corner as restored or reestablished, and (2) to at least 4 of the witness monuments shown on the drawing in (a), above.

(E) Was the corner reestablished through lost corner proportionate methods? If so, show the method, including the directions and distances to other public land survey corners used as evidence or used for proportioning the corner location.

I, Donald Barnes, hereby certify that the corner points as identified by the corner code index were, in a field survey on, *August 7* 1991, established, re-established, monumented, re-monumented, recovered or restored as expressed below and in conformance with the regulations and rules as required in the current manual of survey instructions of the United States Department of Interior, Bureau of Land Management.



COUNTY SURVEYOR FILING DATA

Date of computer entry _____

Date microfilmed _____

Number of included sheets _____

CORNER CODE

AFFIX YOUR LAND SURVEYOR SEAL

A 9