

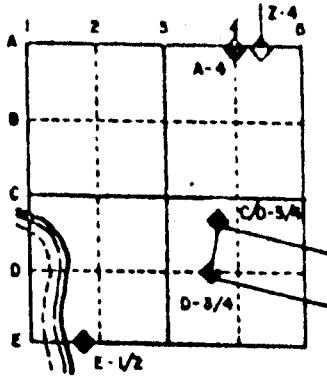
PUBLIC LAND SURVEY MONUMENT RECORD

For Public Land Survey Corners in the  
T. 1 N., R. 13 E.  
CORNER CODE INDEX

1	2	3	4	5	6	7	8	9	10	11	12	13	14	15	16	17	18	19	20	21	22	23	24	25
A	6	5	4	3	2																			
B																								
C																								
D																								
E																								
F																								
G	7	8	9	10	11	12																		
H																								
I																								
J																								
K	16	17	18	19	20	21	22	23	24															
L																								
M																								
N																								
O																								
P	19	20	21	22	23	24																		
Q																								
R																								
S																								
T	30	29	28	27	26	25																		
U																								
V																								
W																								
X																								
Y																								
Z																								

PLACE MONUMENT SYMBOL (◆) AT PROPER LOCATION ON ABOVE INDEX

EXAMPLE



TURTLE TWP  
ROCK COUNTY WI

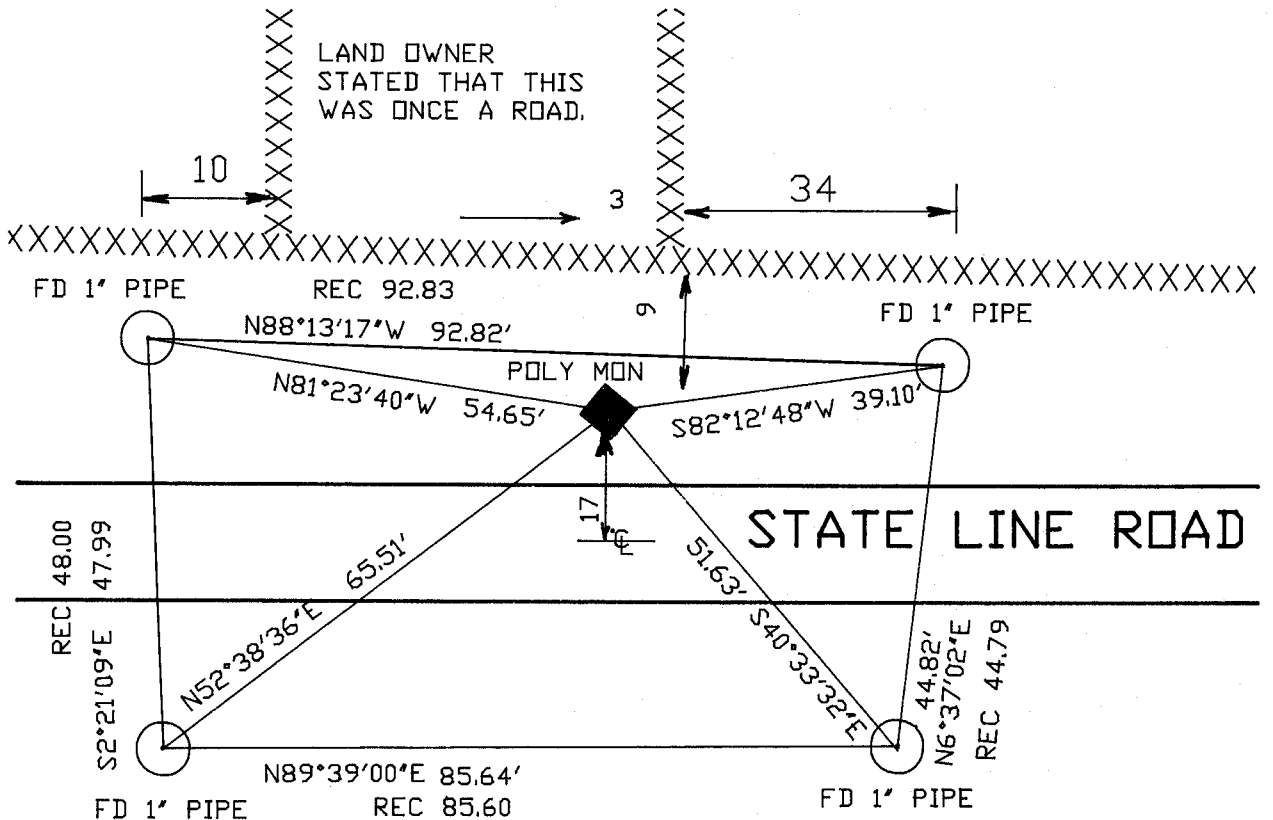
IF AVAILABLE  
STATE PLANE COORDINATES

North (Y) 200,606.68 Elev. (Z) \_\_\_\_\_  
East (X) 519,993.15 Zone \_\_\_\_\_  
Hor. Datum COUNTY Vert. Datum \_\_\_\_\_

◆ CORNER MONUMENT

○ WITNESS MONUMENT

BEARINGS ARE BASED ON: ASSUMED



FB #1 PG 63 & 66

MICROFILMED

SHEET \_\_\_ OF \_\_\_

CORNER CODE: 219

(B) Describe any record evidence, monument evidence, occupational evidence, testimonial evidence or any other material evidence you considered, and whether the monument was found or placed.

1833 LYONS ORIGINAL SURVEYOR. SET A POST FOR 1/4 SECTION CORNER. BLACK OAK 17N82 1/2E 44.88';BLACK OAK 16 N35W 151.8'.

CALLS FOR 2640 TO SE AND SW CORNERS OF SECTION 35.

1848 WHEELER VOL 6 PG 407 TERRITORIAL ROAD RECORDS. CALLS FOR THE ROAD TO BE 33 FEET NORTH OF THE STATE LINE.

1961 BATTERMAN JR. VOL 4 PG 88 DUG 25X14X4 HOLE AND FOUND NOTHING.

1978 BARNES VOL 5 PG 462. FORMER COUNTY SURVEYOR DUG & FOUND NOTHING. PLACED ALUMINUM MONUMENT ON LINE WITH S 1/4 CORNER SECTION 36 AND NE CORNER SECTION 1 T46N R2E AT SINGLE PROPORTIONATE DISTANCE.

1978 BARNES VOL 5 PG 456 CALLS FOR 2642.90 TO THE SE AND SW CORNERS OF SECTION 35.

FOUND ALUMINUM MONUMENT AS PREVIOUSLY INSTALLED. REMOVED TOP PART OF ALUMINUM MONUMENT AND INSTALLED POLY MONUMENT.

C) Was the corner restored through acceptance of (1) an obliterated evidence location, or, (2) a found perpetuated location?

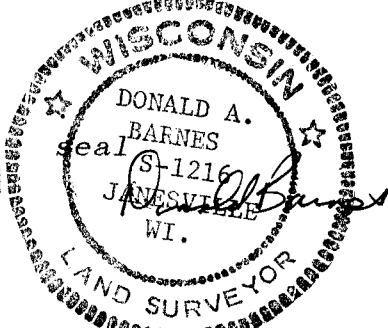
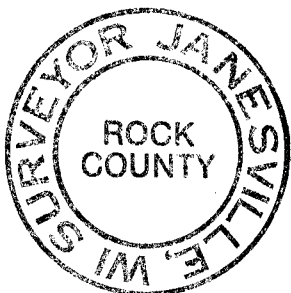
NO

D) Describe any material discrepancy between the location of the corner as restored or reestablished and the location of that corner as previously restored or reestablished by distance and direction. Show the discrepancy on the plan view drawing under (a), above. Show the distances between the corner as previously restored or reestablished and (1) the corner as restored or reestablished, and (2) to at least 4 of the witness monuments shown on the drawing in (a), above.

THERE WAS A BLUNDER IN THE PLACEMENT OF THE MONUMENT. THERE WERE NO SURVEYS OF RECORD THAT USED THAT MONUMENT. REMOVED TOP PORTION OF THE MONUMENT AND PLACED A POLY MONUMENT AT THE 1978 INTENDED LOCATION.

(E) Was the corner reestablished through lost corner proportionate methods? If so, show the method, including the directions and distances to other public land survey corners used as evidence or used for proportioning the corner location.

I, Donald Barnes, hereby certify that the corner points as identified by the corner code index were, in a field survey on, November 20,1991, established, re-established, monumented, re-monumented, recovered or restored as expressed below and in conformance with the regulations and rules as required in the current manual of survey instructions of the United States Department of Interior, Bureau of Land Management.



COUNTY SURVEYOR FILING DATA

Date of computer entry \_\_\_\_\_

Date microfilmed \_\_\_\_\_

Number of included sheets \_\_\_\_\_

CORNER CODE

AFFIX YOUR LAND SURVEYOR SEAL