

U.S. PUBLIC LAND SURVEY MONUMENT RECORD

For Public Land Survey Corners in:

WI ADMINISTRATIVE CODE A-E 7.08 REQUIREMENT

T. 1 N., R. 12 E

CORNER CODE INDEX

A	1	2	3	4	5	6	7	8	9	10	11	12	13	14	15	16	17	18	19	20	21	22	23	24	25
B																									
C	6																								
D		5																							
E			4																						
F				3																					
G					2																				
H						1																			
I	7																								
J		8																							
K			9																						
L				10																					
M					11																				
N						12																			
O							13																		
P								14																	
Q									15																
R										16															
S											17														
T												18													
U													19												
V														20											
W															21										
X																22									
Y																	23								
Z																		24							
																			25						
																				26					
																					27				
																						28			
																							29		
																								30	
																									31
																									32
																									33
																									34
																									35
																									36

Beloit TWP
ROCK COUNTY WI

IF AVAILABLE
ROCK COUNTY COORDINATES PREFERRED

North 211,712.40 Elev. _____

East 488,222.52

Hor. Datum COUNTY Vert. Datum _____

LATITUDE _____ ELLIPS. HT. _____

LONGITUDE _____

GPS (X) _____ TRAVERSE (X) _____

BASED ON THE FOLLOWING CONTROL:

PLACE MONUMENT SYMBOL AT PROPER LOCATION ON ABOVE INDEX

CORNER MONUMENT

WITNESS MONUMENT

(a)

BEARINGS ARE BASED ON: _____

FIELD BOOK _____ PAGE # _____

SHEET 1 OF 4

SHOW A PLAN VIEW DRAWING DEPICTING THE CORNER MONUMENT AND SURROUNDING PHYSICAL FEATURES, INCLUDING THE EXCAVATION AREA AND DEPTH.

PLANNING & ZONING COMMITTEE ADOPTED THE ABOVE FORM ON 12/2/1982

CORNER CODE R19

BE590

(B) Describe any record evidence, monument evidence, occupational evidence, testimonial evidence or any other material evidence you considered, and whether the monument was found or placed.

1834 HARRISON EAST ON BETWEEN SEC 23 & 26
2442 ENTER RIVER BOTTOM
2514.6 TO A TRAIL SUPPOSED TO BE THAT OF GENERAL ALEXANDER'S
BRIGADE OF ILLINOIS MAL?? IN 1832
2640 QUARTER SEC COR SET A POST & RAISED A MOUND
3519.12' INT THE RIGHT BANK OF ROCK RIVER SET MEANDER POST BUR
OAK 18 S82W 869 NO OTHER NEAR
1846 ORSON LYON WEST TRUE LINE BETWEEN SECTIONS 23 & 26
792' ENTERED ROCK RIVER BOTTOM
1056 INDIAN TRAIL LEADING N & S
1465.2 SET POST ON LEFT BANK OF ROCK RIVER CRS SSW
1829.52 TO POST ON RIGHT BANK OF RIVER
1857 HOBART VOL 1 PG 120 2485.56 N88-20E FROM SW COR SEC 23.
1920 KERCH DAWSON'S ADD BK 10 PG 16 CALLS FOR NORTH LINE OF SECTION 26
WITH SEVERAL CALL DISTANCES TO PROPERTY CORNERS.

DUG & FOUND NOTHING.

LAND OWNER STATED FOUND CUT "X" IN CI RIM WAS SET AS HER PROPERTY
CORNER IN THE EARLY 1960s.

C) Was the corner restored through acceptance of (1) an obliterated
evidence location, or, (2) a found perpetuated location?
USED KERCH'S DAWSON'S ADDITION TO RESTORE CORNER.

D) Describe any material discrepancy between the location of the
corner as restored or reestablished and the location of that corner as
previously restored or reestablished by distance and direction. Show
the discrepancy on the plan view drawing under (a), above. Show the
distances between the corner as previously restored or reestablished
and (1) the corner as restored or reestablished, and (2) to at least 4
of the witness monuments shown on the drawing in (a), above.

(E) Was the corner reestablished through lost corner proportionate
methods? If so, show the method, including the directions and
distances to other public land survey corners used as evidence or used
for proportioning the corner location.

NO

I, Donald Barnes, hereby certify that the corner points as identified
by the corner code index were, in a field survey on, October 28, 1997,
established, re-established, monumented, re-monumented, recovered or
restored as expressed below and in conformance with the regulations and
rules as required in the current manual of survey instructions of the
United States Department of Interior, Bureau of Land Management.

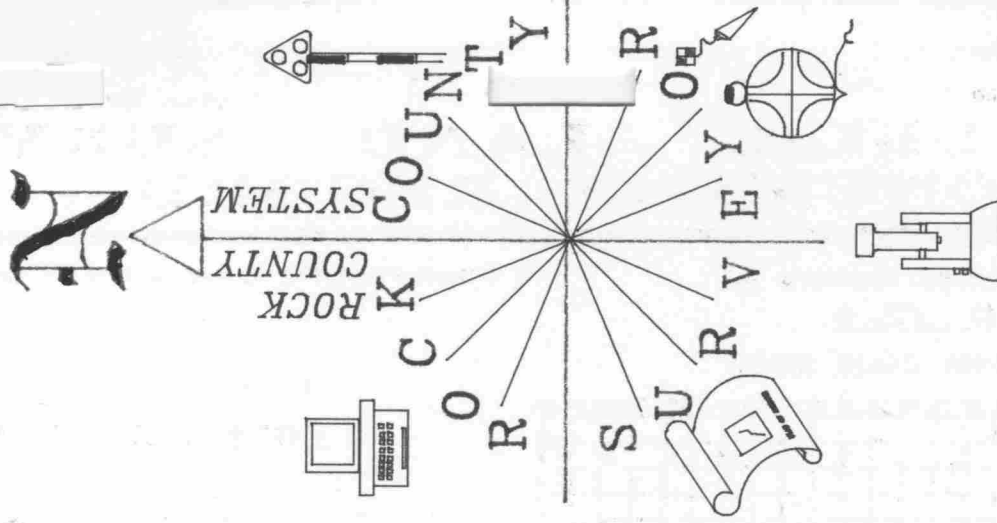
seal
Donald Barnes
Nov 6, 1997

COUNTY SURVEYOR FILING DATA

Date of computer entry _____

Date microfilmed _____

Number of included sheets R 19
CORNER CODE

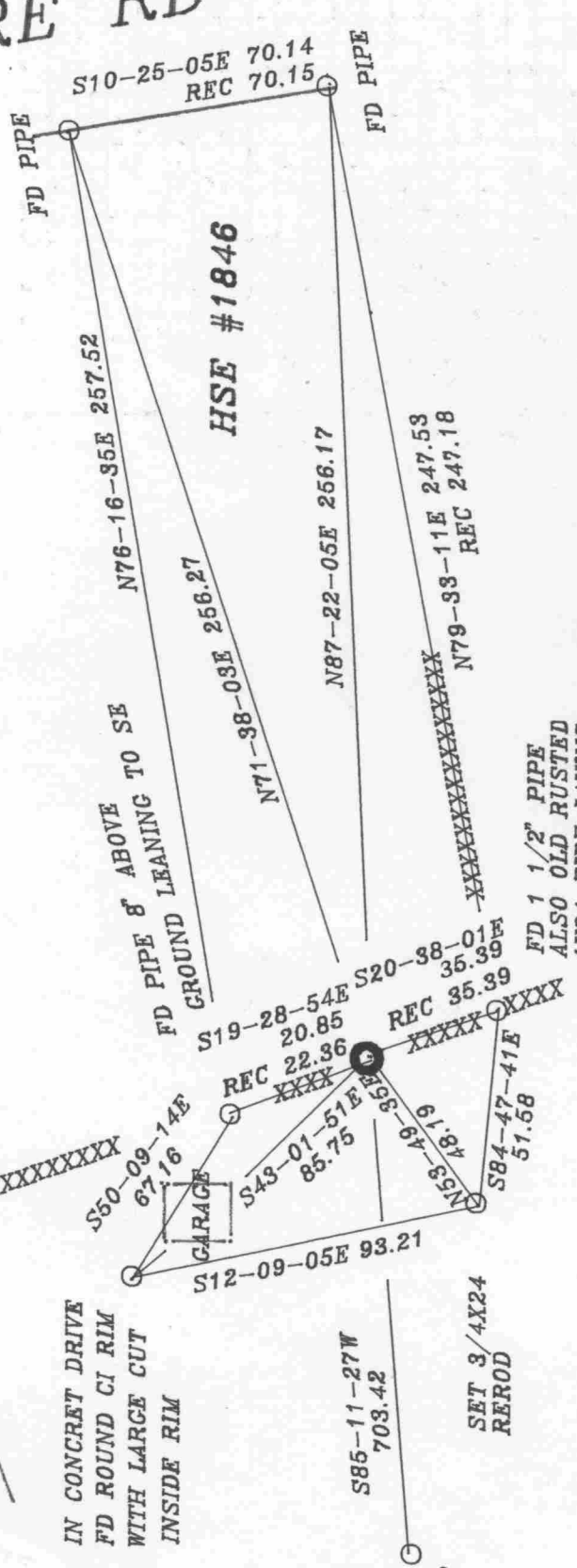


SHORE RD

DAWSON AVE.

DUG & FD
NOTHING
X

DUG & FD
NOTHING
X



S 1/4 COR SEC 23

PLACE C-1 MONUMENT
WITH 4 MAGNETS
1' DEEP

FD 1 1/2" PIPE
ALSO OLD RUSTED
1X24 PIPE LAYING
ON TOP OF GROUND

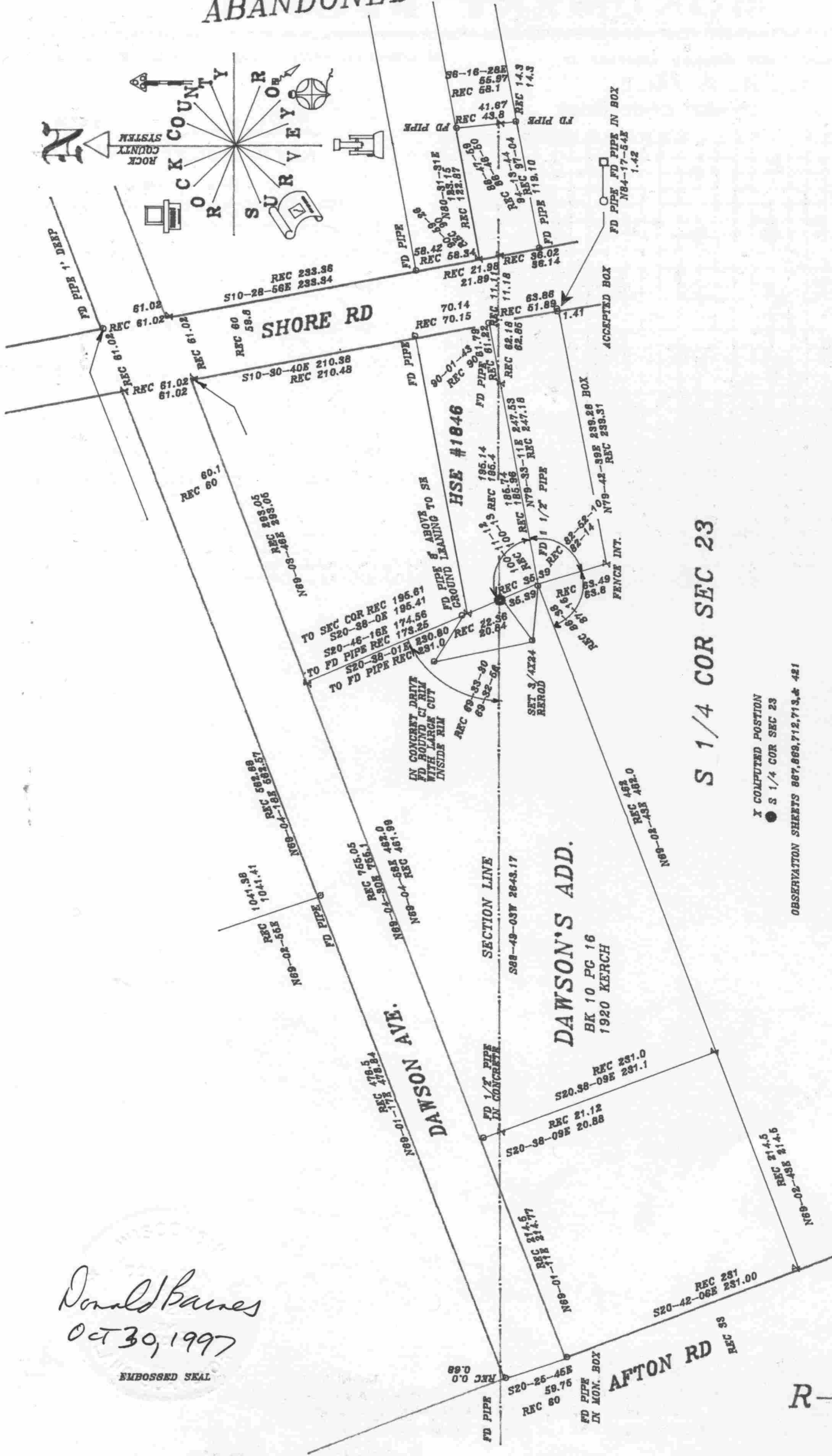
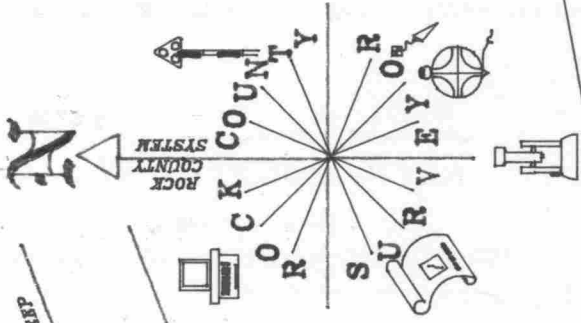
ABOUT 2 SW OF
FD PIPE.

Donald Barnes
Nov 6, 1997
EMBOSSSED SEAL

PIPE IN MON.
BOX. AT SE
CORNER OF
BURTON &
AFTON ROADS

R-19

ABANDONED RAIL ROAD



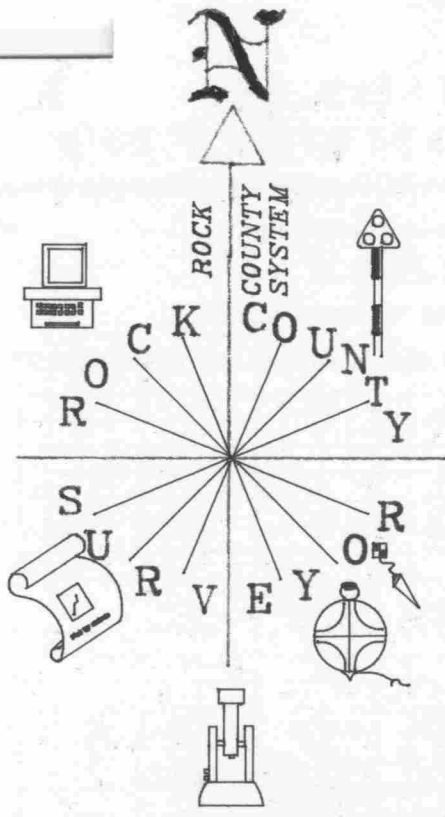
S 1/4 COR SEC 23

X COMPUTED POSITION
● S 1/4 COR SEC 23

OBSERVATION SHEETS 867, 868, 712, 713, & 421

Donald Barnes
Oct 30, 1997

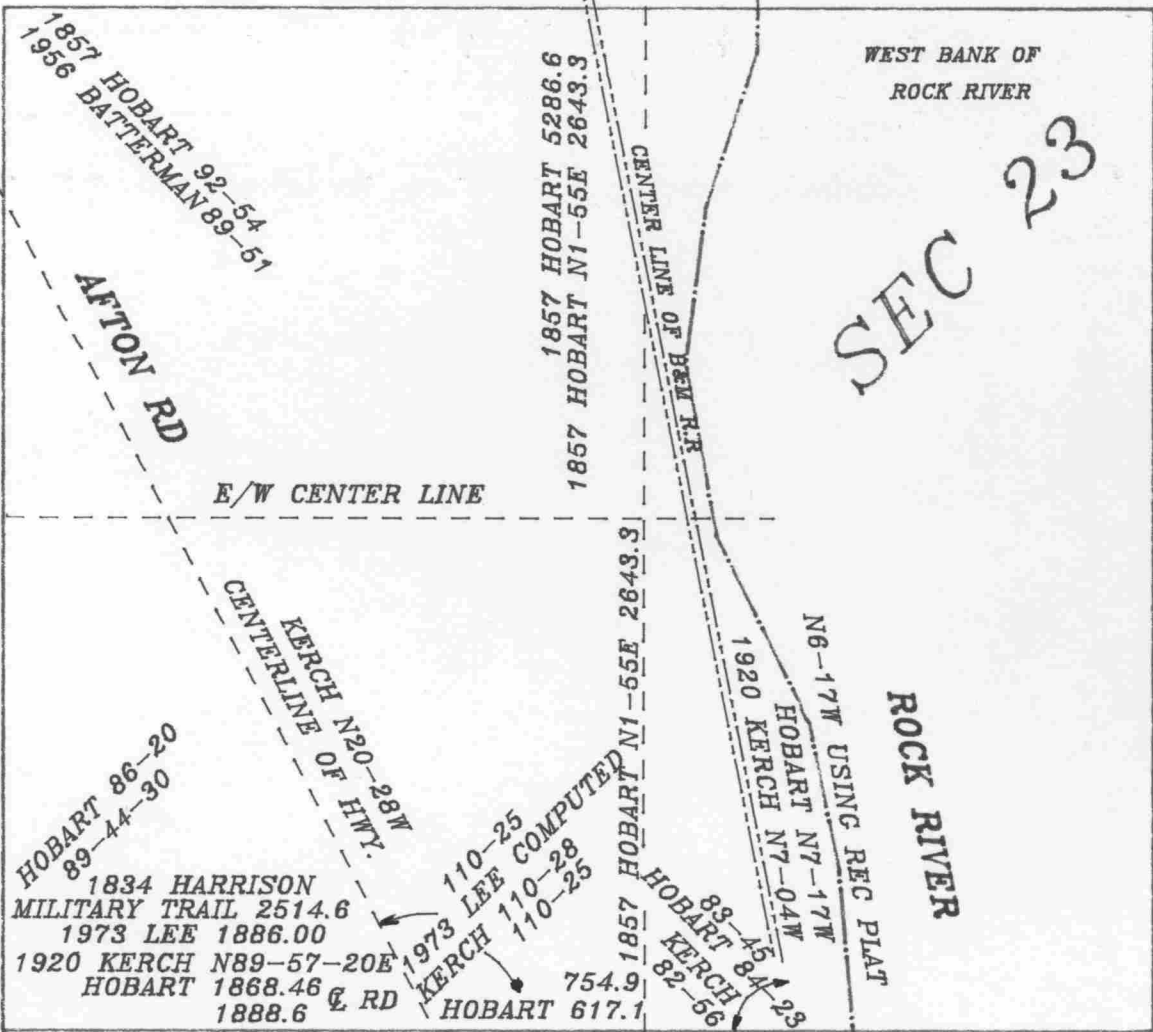
EMBOSSED SEAL



NW COR

1834 HARRISON 2640
1857 HOBART N89-06E 2539.68

N 1/4 COR



SEC 23

ROCK RIVER

1857 HOBART 5315.64
1996 KREBS 5314.05
1997 KREBS 5314.02
N0-04-33E 5314.04

1857 HOBART N2E 2665.74
1857 HOBART N2E 2649.9

E/W CENTER LINE

KERCH N20-28W
CENTERLINE OF HWY.

HOBART 86-20
89-44-30

1834 HARRISON
MILITARY TRAIL 2514.6
1973 LEE 1886.00
1920 KERCH N89-57-20E
HOBART 1868.46 & RD
1888.6

110-25
1973 LEE COMPUTED
110-28
KERCH 110-25

1857 HOBART 5286.6
1857 HOBART N1-55E 2643.3

1857 HOBART N1-55E 2643.3

1920 KERCH
HOBART N7-04W
N6-17W USING REC PLAT
88-45-17W
HOBART 84-23
KERCH 82-56

SW COR

HOBART 180-0
180-06-56

N0-02-24W 2662.18
1857 HOBART N2E 2643.63
1834 HARRISON 2640

1857 HOBART N88-20E 2485.56
N89-49-03E 2643.17
1834 HARRISON 2640
1857 HOBART 3129.06
N89-49-08E 3134.3 & RR
1834 HARRISON 3519.12
M.P.

HOBART 643.5
491

HOBART 89-40
LEE 88-30-10
90-08-33

SEC 26

E/W CENTERLINE

W 1/4 COR

1857 HOBART N88-20E 2534.4

1857 HOBART N1-01W

SIXTH ST

169.62 HOBART 646.8

Donald Barnes
Nov 6, 1997

EMBOSSED SEAL

R-19