

U.S. PUBLIC LAND SURVEY MONUMENT RECORD

For Public Land Survey Corners in:

WI ADMINISTRATIVE CODE A-E 7.08 REQUIREMENT

T. 1N., R. 12E

CORNER CODE INDEX

A	1	2	3	4	5	6	7	8	9	10	11	12	13	14	15	16	17	18	19	20	21	22	23	24	25
B	6																								
C		5																							
D																									
E																									
F																									
G	1																								
H		8																							
I																									
J																									
K	18																								
L		11																							
M																									
N																									
O																									
P	19																								
Q		20																							
R																									
S																									
T	30																								
U		29																							
V																									
W																									
X	31																								
Y		32																							
Z																									

BELoit TWP
ROCK COUNTY WI

IF AVAILABLE
ROCK COUNTY COORDINATES PREFERRED

North 217,008.50 Elev. _____

East 488,227.91

Hor. Datum COUNTY Vert. Datum _____

LATITUDE _____ ELLIPS. HT. _____

LONGITUDE _____

GPS (X) _____ TRAVERSE (X) _____

BASED ON THE FOLLOWING CONTROL:

PLACE MONUMENT SYMBOL AT PROPER LOCATION ON ABOVE INDEX

CORNER MONUMENT

WITNESS MONUMENT

(a)

BEARINGS ARE BASED ON: _____

FIELD BOOK _____ PAGE # _____

SHEET 1 OF 2

SHOW A PLAN VIEW DRAWING DEPICTING THE CORNER MONUMENT AND SURROUNDING PHYSICAL FEATURES, INCLUDING THE EXCAVATION AREA AND DEPTH.

PLANNING & ZONING COMMITTEE ADOPTED THE ABOVE FORM ON 12/2/1982

CORNER CODE N-19

BE570

(B) Describe any record evidence, monument evidence, occupational evidence, testimonial evidence or any other material evidence you considered, and whether the monument was found or placed.

- 1834 HARRISON EAST BETWEEN SECTIONS 14 & 23
660 LEAVE PRAIRIE & ENTER BUR AND WHITE OAK TIMBER
2640 QUARTER SEC CORNER NEAR THE EDGE OF RIVER BOTTOM WHITE OAK 10 N10W 16, RED OAK 12 S34W 35 (WHITE OAK 10, RED OAK 12 MARKED)
2821.5 INT. RIGHT BANK OF ROCK RIVER SET MEANDER POST WHITE OAK 24 N53W 124, WHITE OAK 12 S65W 110
- 1836 ORSON LYON WEST TRUE LINE BETWEEN SECTIONS 1 & 23
990 LEFT PRAIRIE
1650 INDIAN TRAIL N&S
1782 ENTERED ROCK RIVER BOTTOM
2112 TO ROCK RIVER CRS SSW & SET POST ON LEFT BANK CORNER TO SECTIONS 14 & 23 BUR OAK 14 S51E 49, BUR OAK 10 N30E 35
2550.24 POST ON RIGHT BANK OF ROCK RIVER.
- 1859 HOBART VOL 1 PG 120 N89-6E 2539.68 (TO RAIL ROAD OR CORNER?)
1929 BATTERMAN BK 9 PG 63A & 63B RAVINE SUB CALLS FOR A PIPE AT THE WEST & EAST RAILROAD R/W & CENTER OF RAILROAD WITH A DISTANCE OF 50.2 FROM THE CENTER OF RAILROAD TO THE EAST AND WEST PIPES ON THE R/W. AT DISTANCE OF 165.68 FROM THE EAST R/W PIPE TO THE MEANDER CORNER.
1955 SHIMEALL CALLS FOR NORTH LINE OF SEC 23 BUT STATES NOTHING ABOUT THE N 1/4 CORNER OR MEANDER CORNER. PLACED PIPES NEAR RAILROAD TRACKS & RIVER ON SECTION LINE.
1956 BATTERMAN MAP #460 89-51 ANGLE AT NW COR SEC 23 FROM NORTH LINE TO WEST LINE OF SEC 23

FOUND SHIMEALLS GAS PIPE NEAR RIVER. ACCEPTED THIS AS THE MEANDER CORNER. REPLACED IT WITH A POLY. MONUMENT & PLACED CARSONITE POST ON EAST SIDE. CORNER IS ON FACE OF LARGE TREE. DID INSTALL MONUMENT.

C) Was the corner restored through acceptance of (1) an obliterated evidence location, or, (2) a found perpetuated location?

RESTORED CORNER THROUGH ACCEPTANCE OF FOUND PERPETUATED LOCATION.

D) Describe any material discrepancy between the location of the corner as restored or reestablished and the location of that corner as previously restored or reestablished by distance and direction. Show the discrepancy on the plan view drawing under (a), above. Show the distances between the corner as previously restored or reestablished and (1) the corner as restored or reestablished, and (2) to at least 4 of the witness monuments shown on the drawing in (a), above.

NONE

(E) Was the corner reestablished through lost corner proportionate methods? If so, show the method, including the directions and distances to other public land survey corners used as evidence or used for proportioning the corner location.

NO

I, Donald Barnes, hereby certify that the corner points as identified by the corner code index were, in a field survey on, NOV 17, 1997, established, re-established, monumented, re-monumented, recovered or restored as expressed below and in conformance with the regulations and rules as required in the current manual of survey instructions of the United States Department of Interior, Bureau of Land Management.

COUNTY SURVEYOR FILING DATA

seal

Date of computer entry _____

Date microfilmed _____

Number of included sheets _____

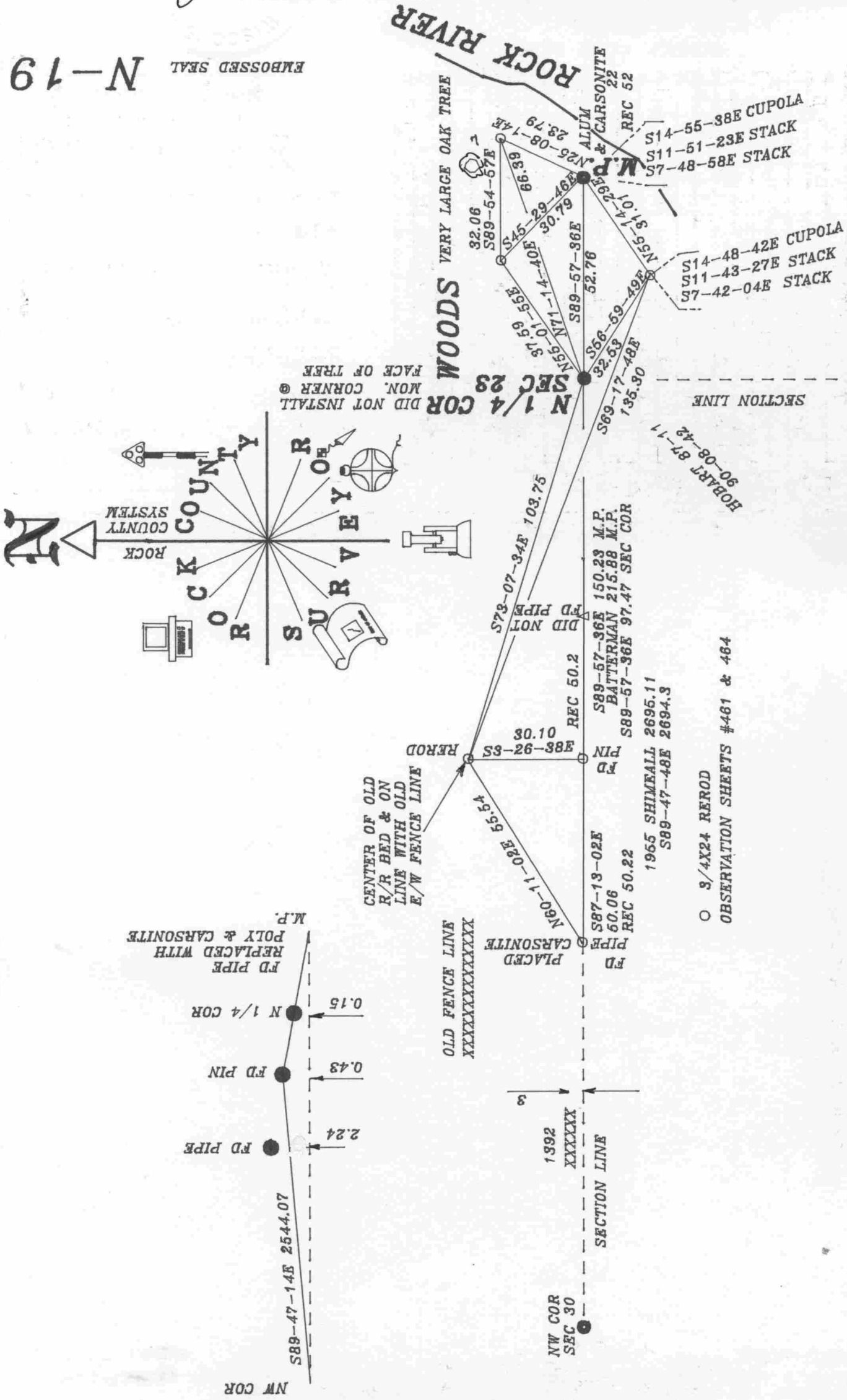
CORNER CODE

EMBOSS LAND SURVEYOR SEAL

A-E 7.08 REQUIREMENT

N-19

Dwight Barnes
2/21/98



○ 3/4X24 REROD
OBSERVATION SHEETS #461 & 464